



LIAN LI UNI FAN SL INFINITY 120 RGB WHITE (3 PACK)

\$99.95

Product Images

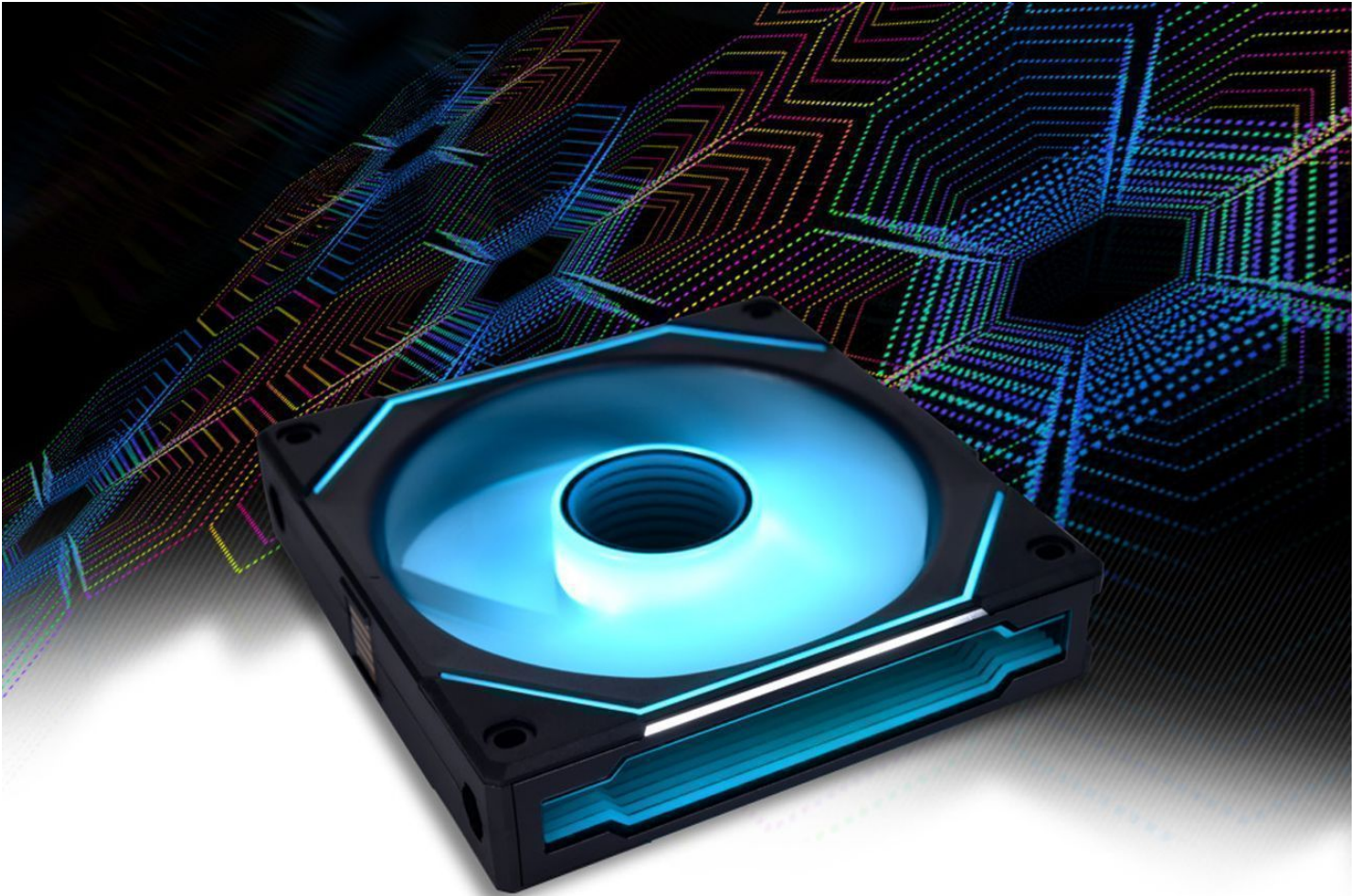


Short Description

Meet the new Lian Li UNI FAN SL Infinity 120 series. Aside from the removable interlocking features, the new SL Infinity 120 features a cable power module that supports multiple cable orientations as well as a new lighting design with an infinity mirror effect at the front blade and frame edges.

Description

Meet the new Lian Li UNI FAN SL Infinity 120 series. Aside from the removable interlocking features, the new SL Infinity 120 features a cable power module that supports multiple cable orientations as well as a new lighting design with an infinity mirror effect at the front blade and frame edges.

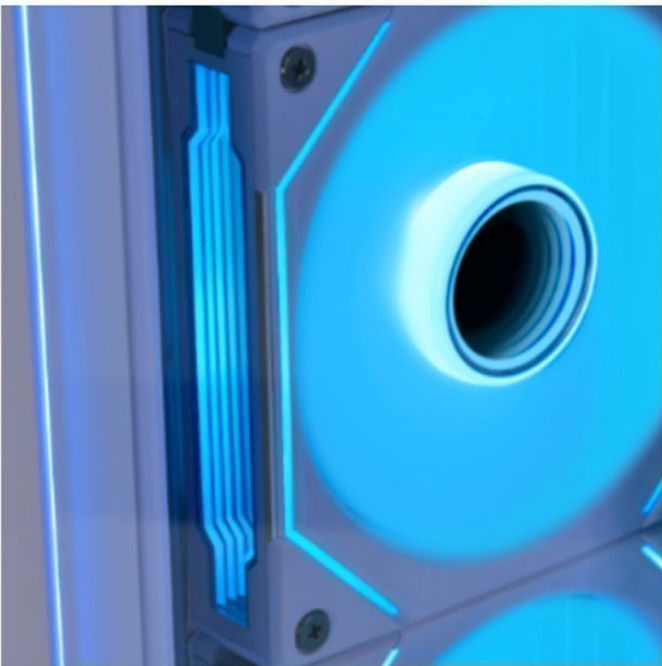


UNI FAN SL-INFINITY

Infinity Mirror ARGB Fan

Introducing a new look to PC fans and a new level of installation simplicity and light effect customizability.

DAZZLING AT ALL ANGLE



AVAILABLE IN TWO COLORS



Black



White



Features

INFINITY MIRROR FAN

A combination of the original UNI FAN SL and AL with a touch of infinity mirror, the SL-Infinity fans glow clear with multi-layer effects from any visible angle.

CENTERED INFINITY MIRROR ARGB

The circular-shaped infinity mirror at the center of the fan is tuned to have multiple layers spaced 0.5mm apart.

SIDE FRAME ARGB

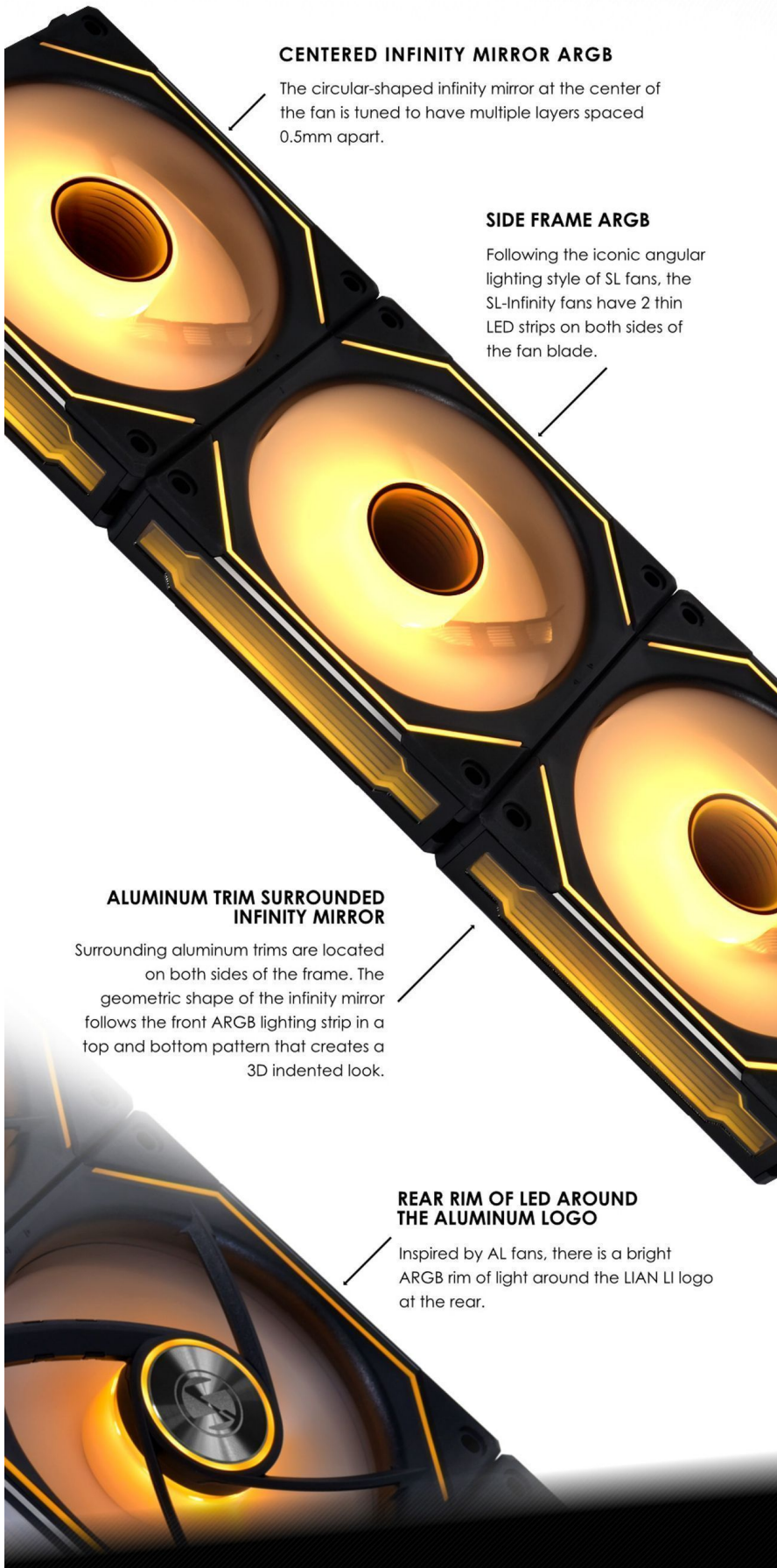
Following the iconic angular lighting style of SL fans, the SL-Infinity fans have 2 thin LED strips on both sides of the fan blade.

ALUMINUM TRIM SURROUNDED INFINITY MIRROR

Surrounding aluminum trims are located on both sides of the frame. The geometric shape of the infinity mirror follows the front ARGB lighting strip in a top and bottom pattern that creates a 3D indented look.

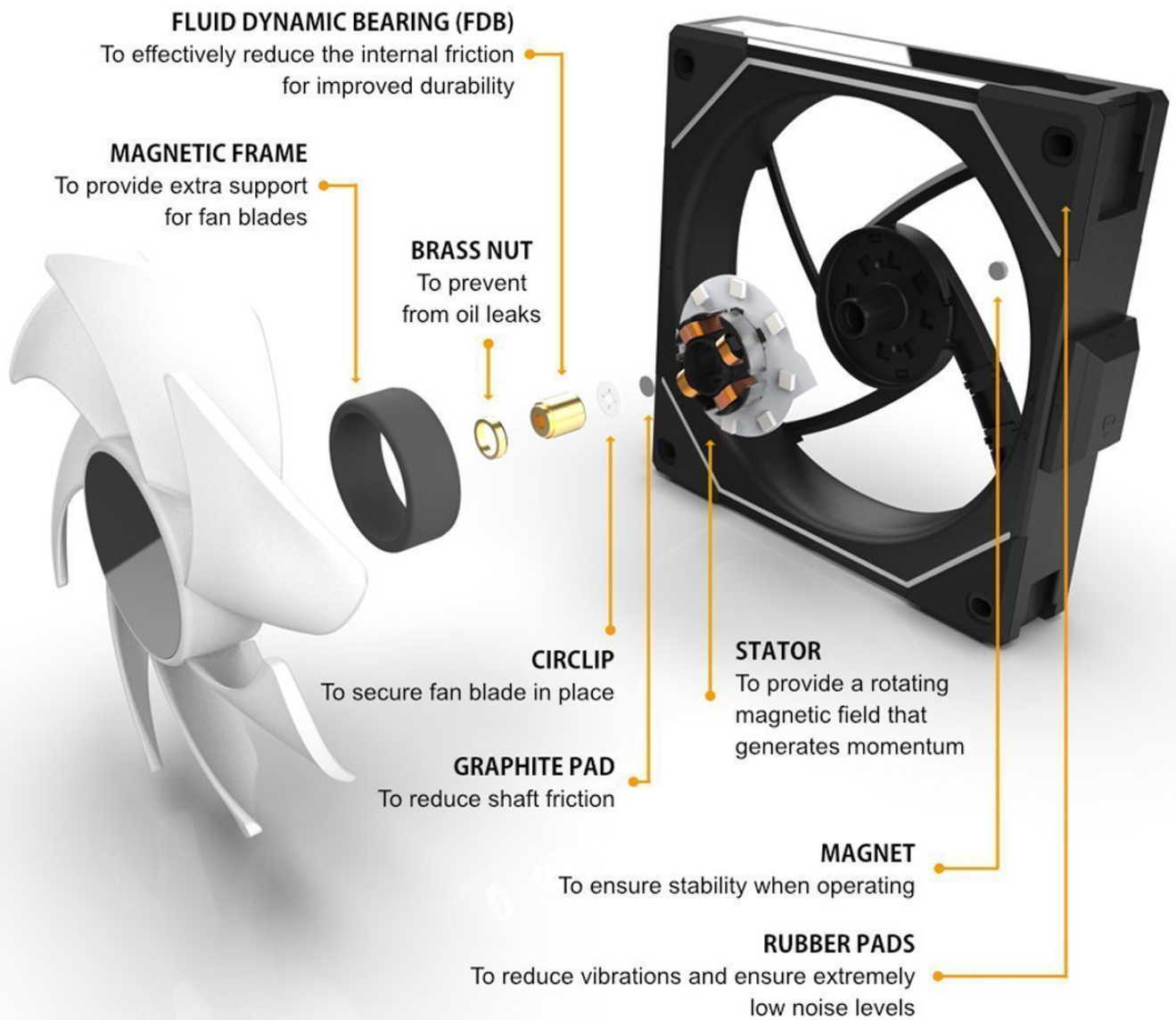
REAR RIM OF LED AROUND THE ALUMINUM LOGO

Inspired by AL fans, there is a bright ARGB rim of light around the LIAN LI logo at the rear.



IMPROVED PERFORMANCE

The SL-Infinity 120 features a 10% performance optimization compared to the SL120 which results in better airflow (61.3 CFM), higher static pressure (2.66 mmH₂O), and a larger range of fan speed (0, 200 ~ 2100RPM) at lower noise levels (29 dB(A)).

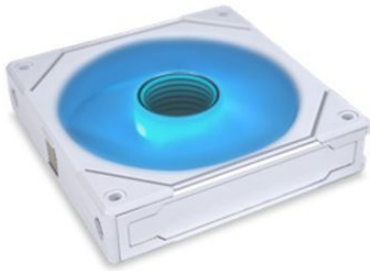


ENDLESS LIGHTING EFFECTS

Similar to the AL fans, L-Connect 3 can set the lighting effects of the SL-Infinity fans for both the fan blades and the fan frame inner edges separately, or go with pre-set combined lighting effects.

Option 1. Set the fan blade and inner fan frame lighting modes individually to achieve a custom look.

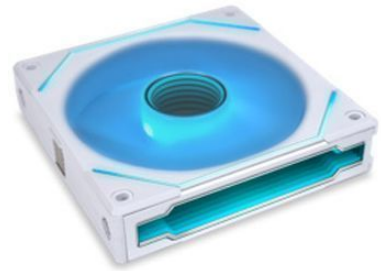
Fan Blade
&
Center Infinity Mirror LED



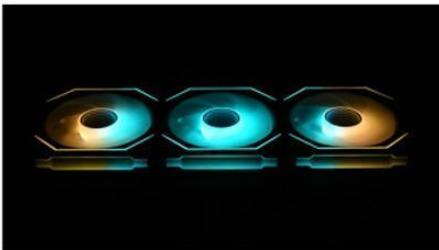
Angle Fan Frame
&
Side Infinity Mirror LED



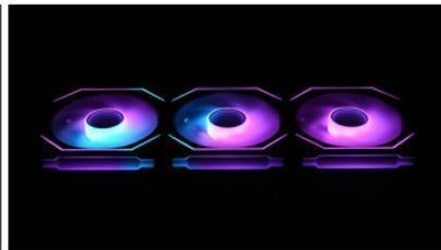
Fan Blade & Center Infinity Mirror
+
Angle Fan Frame
&
Side Infinity Mirror LED



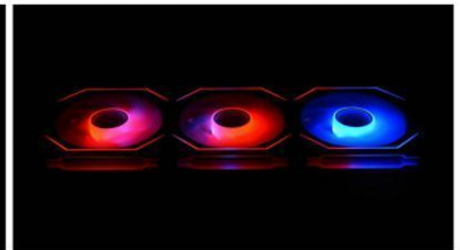
Option 2. Select the combining lighting mode



Tide



Runway



Stack

UNPRECEDENTED MODULARITY

The 2nd generation of UNI FAN SL revisits the interlocking style that can connect up to 4 fans in a cluster and makes cable management simpler and improves compatibility with radiators fittings.

DAISY CHAIN FAN

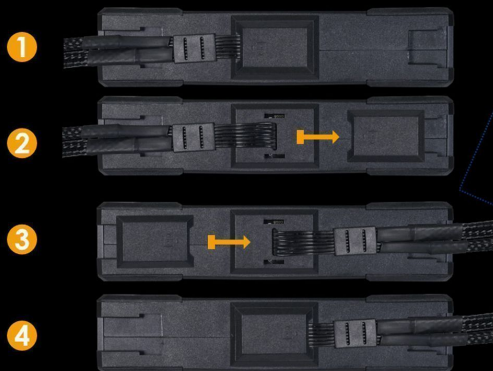
A pin-to-pad contact point passes the signal and power through the fan cluster.

REMOVABLE KEYLOCK

The interlocking key on each fan is now removable to improve compatibility with radiators fittings.

REVERSIBLE CABLE MODULE

The cable module is now placed at the center of the fan and can switch orientation to reduce clearance issues with the radiator inlet and outlet.





Infinity Mirror



Daisy-Chain Design



**Silence at
High Fan Speed**



**L-Connect 3
Software**



Start/ Stop Fan



**Cableless
with Controller**

Specifications

SPECIFICATIONS

PRODUCT NAME	LIAN LI UNI FAN SL-INF 120 RGB			
MODEL	UF-SLIN120-3B	UF-SLIN120-1B	UF-SLIN120-3W	UF-SLIN120-1W
COLOR	Black		White	
NUMBER OF FANS	3	1	3	1
CONTROLLER	Yes	No	Yes	No
CONNECTOR TYPE	4 × 7-PIN	1 × 4-PIN PWM + 3-PIN ARGB	4 × 7-PIN	1 × 4-PIN PWM + 3-PIN ARGB
FAN DIMENSION	120 X 122.1 X 25 (mm)			
RATED VOLTAGE	DC 12V (FAN) & 5V (LED)			
FAN SPEED	0, 200~2100 RPM			
MAX. AIR PRESSURE	2.66 mmH2O (Maximum)			
MAX. AIRFLOW	61.3 CFM (Maximum)			
ACOUSTIC NOISE	29 dB(A) Max			
LOCKED CURRENT	>= 50mA			
BEARING TYPE	Fluid Dynamic Bearing (FDB)			
START-UP VOLTAGE	DC 6.0V			
INPUT CURRENT	180mA (FAN) /600mA (LED)			
INPUT POWER	5.16W			
WARRANTY	2 years			

PACKAGE CONTENT



SLIN120 Triple Pack Black



SLIN120 Single Pack Black



SLIN120 Triple Pack White



SLIN120 Single Pack White

SIMPLE CONNECTION WITH CONTROLLER

The all-new cable module and controller simplify cable management and provide efficient power to the fans.

ONLY ONE CABLE



Combining both the power cable and the lighting cable into a single cable, the cable module uses a 7-pin connector to connect to the controller, efficiently reducing the number of cables cluttering the PC build.



Note: The single pack includes a cable module that features a 4-PIN PWM cable and a 3-PIN 5V ARGB cable to connect directly to the motherboard.

16 FANS IN ONE GO

The included controller in the triple pack can support up to 16 fans (4 fans in each group) and 2 SM-type connecting devices.



SM TYPE PORT

Compatible with the Galahad AIO pump ARGB cable. Each port supports a 5W maximum output.

SYNC 1 port syncs to the lighting effect of port 4 and SYNC 2 port syncs to the lighting effect of port 2

FAN GROUP ARGB + PWM SIGNAL

Supports clusters of up to 4 fans.

2 × SATA CABLE

Total maximum input of 29W

USB CABLE

Plug to 9 pin USB header



5V ARGB / 4 PIN PWM CABLE

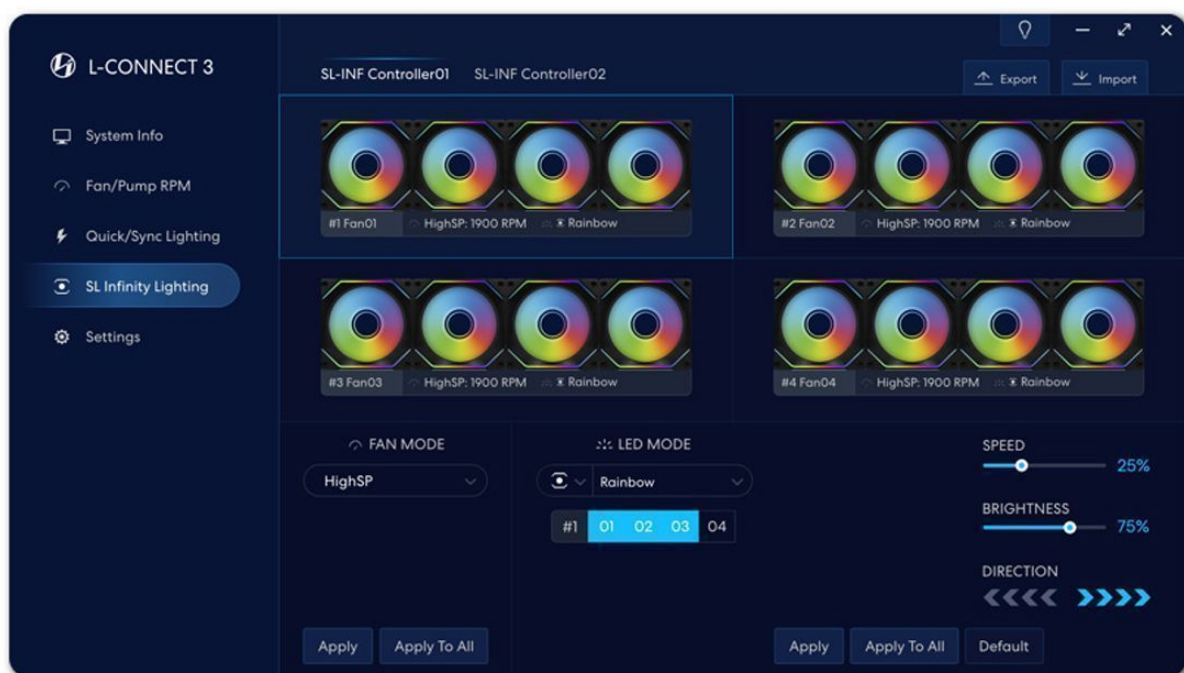
Connect for motherboard sync function.

Note: Please lower the brightness of static white when connecting more than 9 SL-Infinity fans synchronized to the motherboard. Failing to do so may cause inaccurate colors.

L-CONNECT 3 SOFTWARE TO CONTROL SL-INF FANS

Control and preview with precision the lighting effect of the SL-Infinity fans with the new L-Connect interface.

<https://lian-li.com/L-Connect3/>



Select lighting effect of blades / fan frame / both LED

Set personalized color / brightness / speed / direction

INTELLIGENT START/ STOP FAN

Unique to the SL-Infinity fans, L-Connect 3 features a Start/ Stop mode to completely stop the fan when the CPU or GPU is running below your set temperature (the maximum 50°C), achieving minimal acoustic levels when the system is at low temperature.



SYNC FAN SPEED TO MOTHERBOARD

L-Connect 3 now offers an option to sync fan speed to the motherboard, also known as the PWM mode in the earlier L-Connect version.

Click to pass fan speed control to motherboard

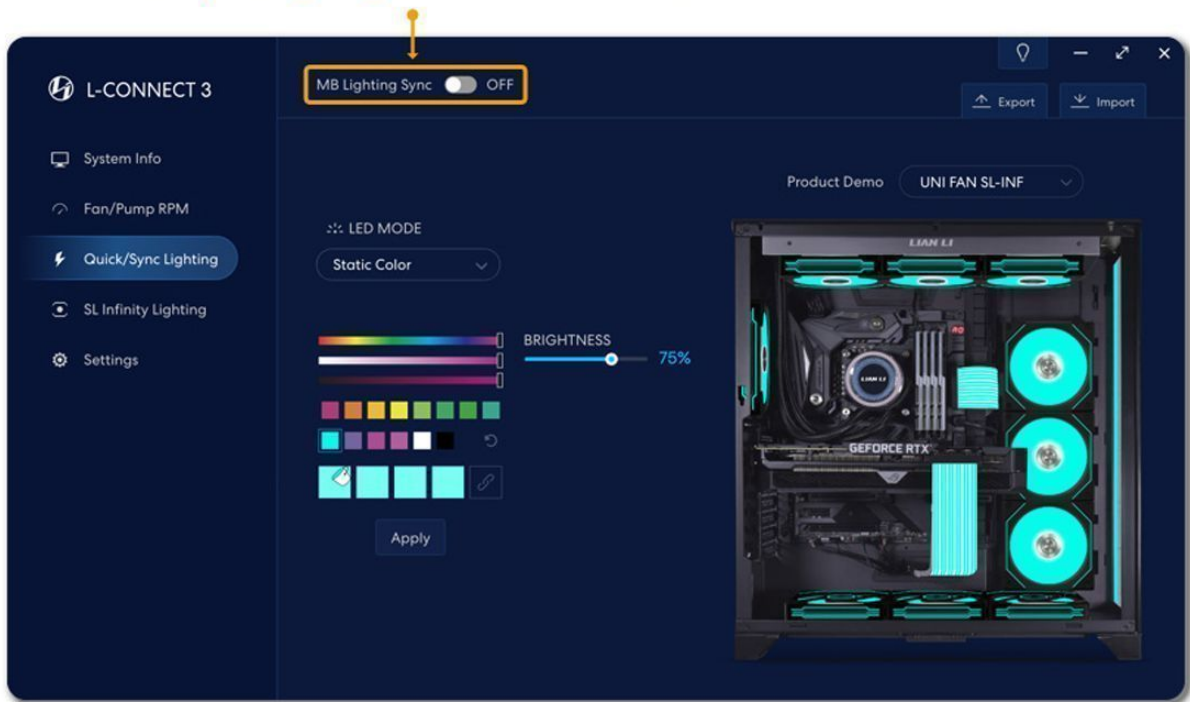
The screenshot shows the L-CONNECT 3 software interface. At the top, the 'MB RPM Sync' toggle is turned ON. Below this, there are two sections for fan controllers: SL-INF Controller01 and SL-INF Controller02. A table lists the settings for four fans in each controller. The 'MyFanA' setting is highlighted with a yellow box, showing 'MyFanA' mode and 'CPU 45°C 1037 RPM'. Below the table is a 'Fan RPM Setting' graph showing a temperature-based fan speed curve. The graph has a y-axis for fan speed (Low to Full) and an x-axis for temperature (0°C to 100°C). A vertical line is drawn at 50°C, and a horizontal line is drawn at 50% fan speed. The graph shows a curve that starts at 10°C and 20% fan speed, rises to 40% at 30°C, 50% at 50°C, and reaches 100% at 70°C. There are buttons for 'Apply', 'Apply To All', and 'Default'.

Fan	Mode	Temp	RPM	Controller	Mode	Temp	RPM
#1	MyFanA	CPU 45°C	1037 RPM	SL-INF Controller01	MyFanE	CPU 45°C	1037 RPM
#2	MyFanB	GPU 70°C	1850 RPM	SL-INF Controller01	MyFanF	GPU 70°C	1850 RPM
#3	MyFanC	CPU 45°C	500 RPM	SL-INF Controller01	MyFanG	CPU 45°C	500 RPM
#4	MyFanD	CPU 45°C	1037 RPM	SL-INF Controller01	MyFanH	CPU 45°C	500 RPM

QUICK SYNC LIGHTING WITH UNI FAN SL/ AL AND STRIMER PLUS V1/V2

The quick sync function saves time to synchronize all LIAN LI device lighting effects with one click. Moreover, synchronize all devices to the motherboard software with one click.

Click to pass lighting control to motherboard



Additional Information

Brand	Lian-Li
SKU	UF-SLIN120-3W
Weight	3.0000
Color	White
Fan Dimensions	120mm
Fan Width	27mm
Fan Connection	4-Pin PWM
Fan Voltage	12 VDC
Fan RPM	1900
Fan CFM	58
Fan Noise (dB)	31
LED Color	RGB
Vendor SKU/EAN	4718466011749

