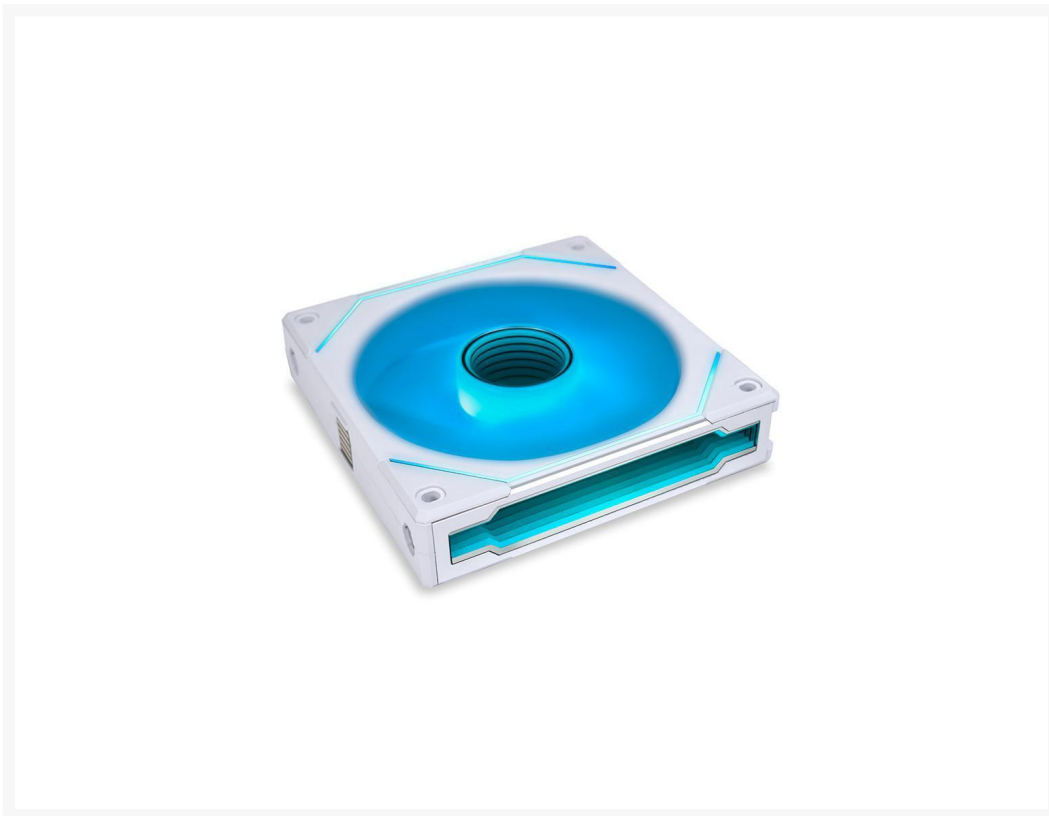




# LIAN LI UNI FAN SL INFINITY 120 RGB WHITE (SINGLE)

\$29.95

## Product Images





## Short Description

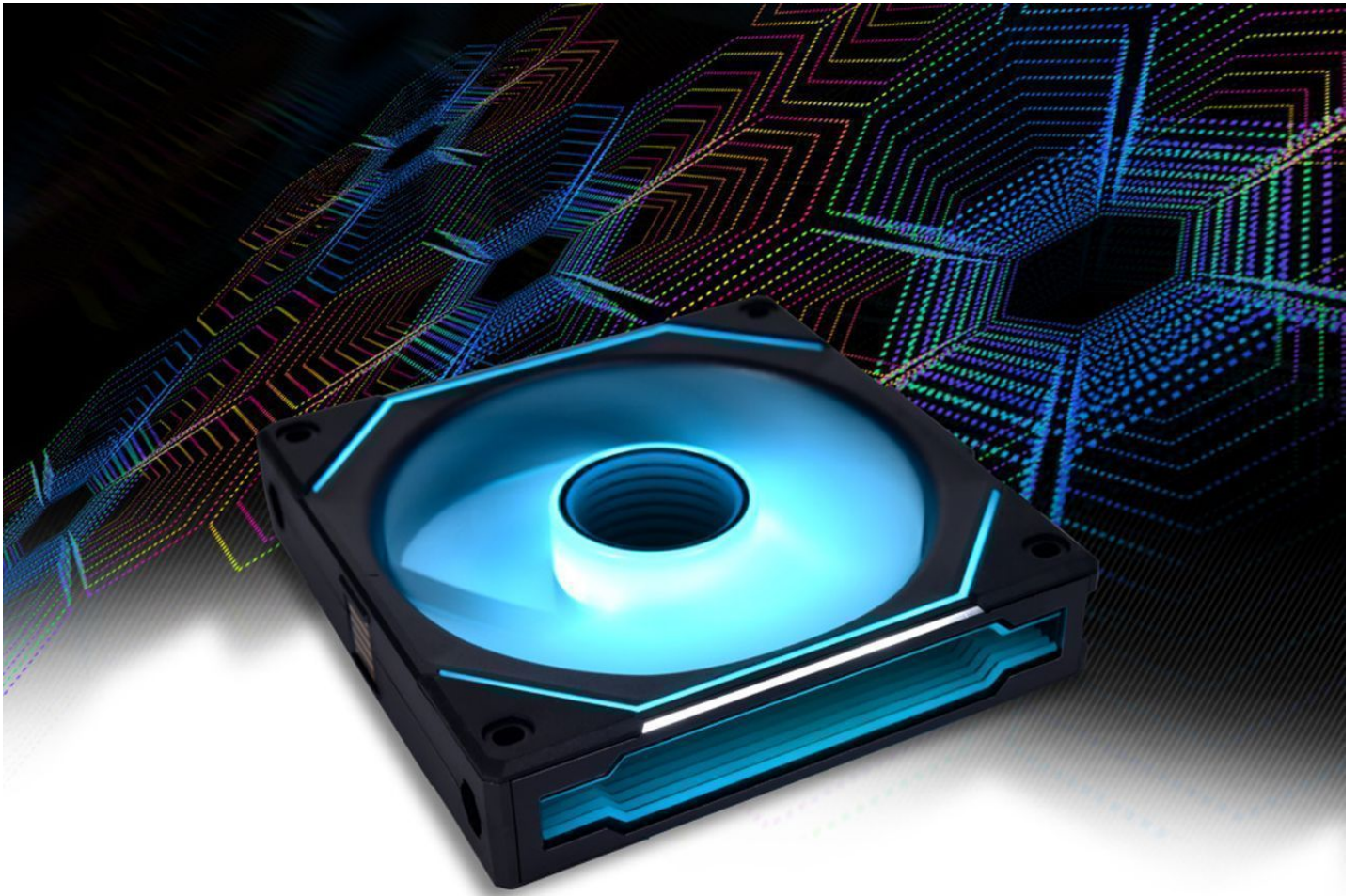
---

Meet the new Lian Li UNI FAN SL Infinity 120 series. Aside from the removable interlocking features, the new SL Infinity 120 features a cable power module that supports multiple cable orientations as well as a new lighting design with an infinity mirror effect at the front blade and frame edges.

## Description

---

Meet the new Lian Li UNI FAN SL Infinity 120 series. Aside from the removable interlocking features, the new SL Infinity 120 features a cable power module that supports multiple cable orientations as well as a new lighting design with an infinity mirror effect at the front blade and frame edges.

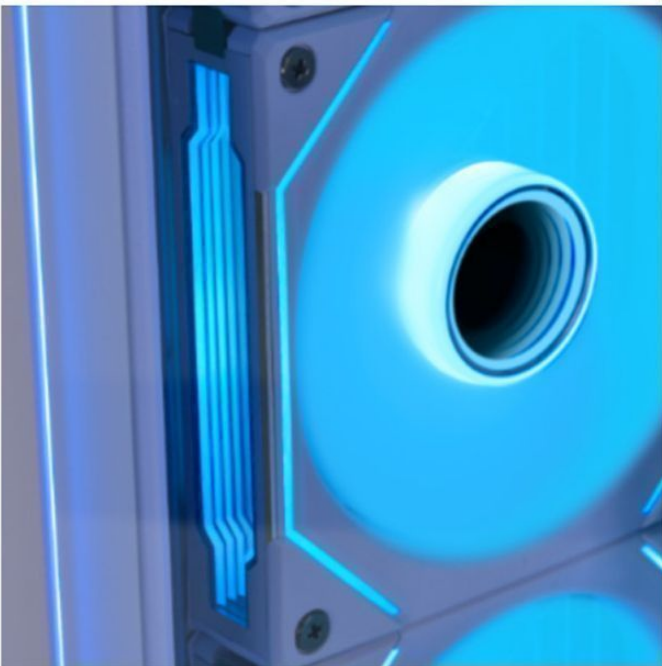


# UNI FAN SL-INFINITY

## Infinity Mirror ARGB Fan

Introducing a new look to PC fans and a new level of installation simplicity and light effect customizability.

## DAZZLING AT ALL ANGLE



## AVAILABLE IN TWO COLORS



Black



White



## Features

---

## INFINITY MIRROR FAN

A combination of the original UNI FAN SL and AL with a touch of infinity mirror, the SL-Infinity fans glow clear with multi-layer effects from any visible angle.

### CENTERED INFINITY MIRROR ARGB

The circular-shaped infinity mirror at the center of the fan is tuned to have multiple layers spaced 0.5mm apart.

### SIDE FRAME ARGB

Following the iconic angular lighting style of SL fans, the SL-Infinity fans have 2 thin LED strips on both sides of the fan blade.

### ALUMINUM TRIM SURROUNDED INFINITY MIRROR

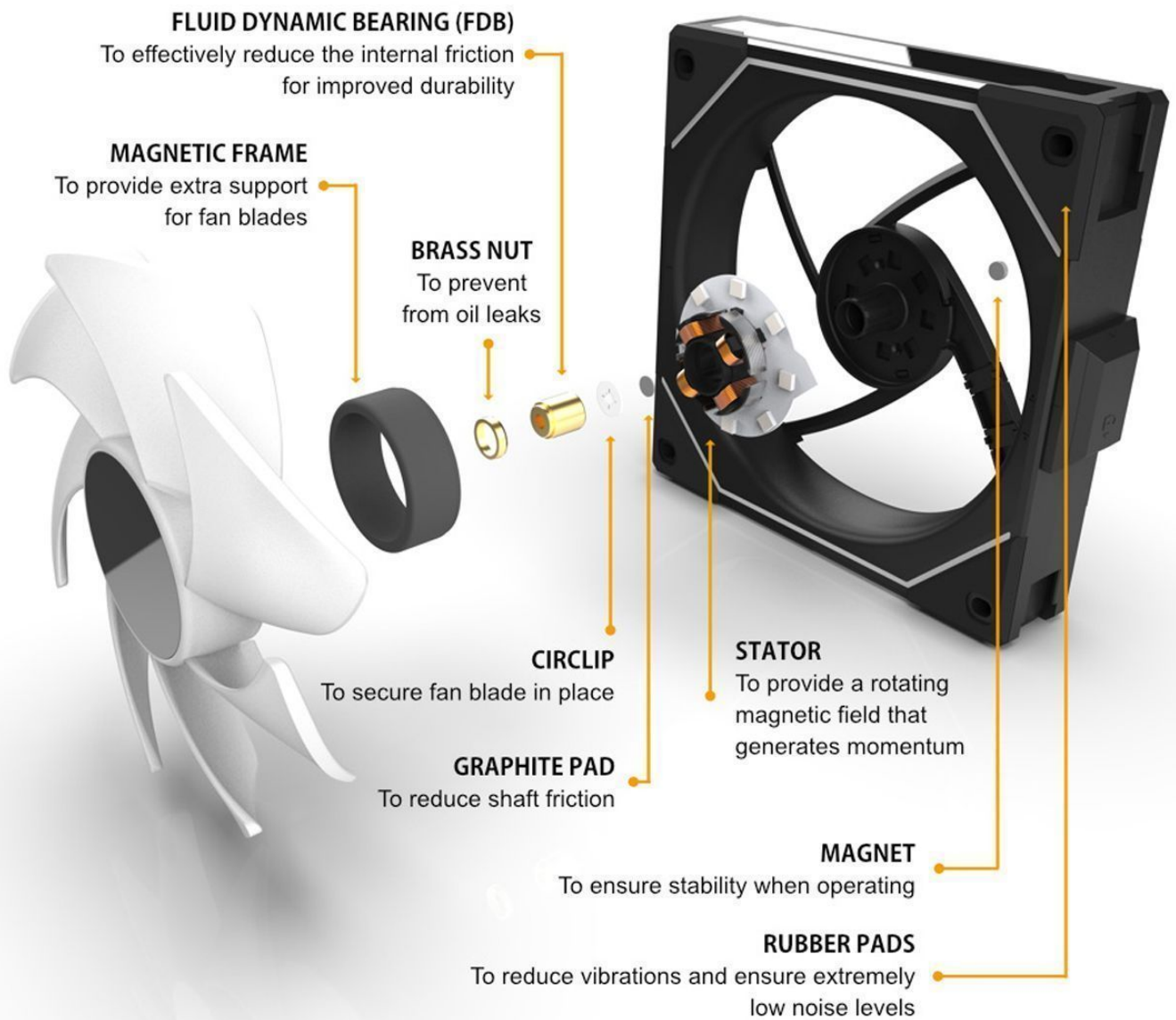
Surrounding aluminum trims are located on both sides of the frame. The geometric shape of the infinity mirror follows the front ARGB lighting strip in a top and bottom pattern that creates a 3D indented look.

### REAR RIM OF LED AROUND THE ALUMINUM LOGO

Inspired by AL fans, there is a bright ARGB rim of light around the LIAN LI logo at the rear.

## IMPROVED PERFORMANCE

The SL-Infinity 120 features a 10% performance optimization compared to the SL120 which results in better airflow (61.3 CFM), higher static pressure (2.66 mmH<sub>2</sub>O), and a larger range of fan speed (0, 200 ~ 2100RPM) at lower noise levels (29 dB(A)).

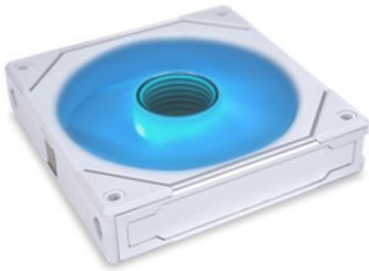


## ENDLESS LIGHTING EFFECTS

Similar to the AL fans, L-Connect 3 can set the lighting effects of the SL-Infinity fans for both the fan blades and the fan frame inner edges separately, or go with pre-set combined lighting effects.

Option 1. Set the fan blade and inner fan frame lighting modes individually to achieve a custom look.

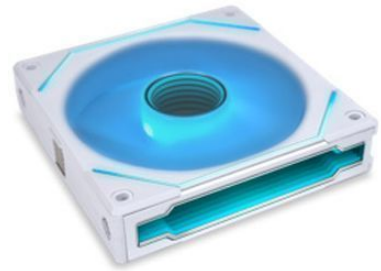
Fan Blade  
&  
Center Infinity Mirror LED



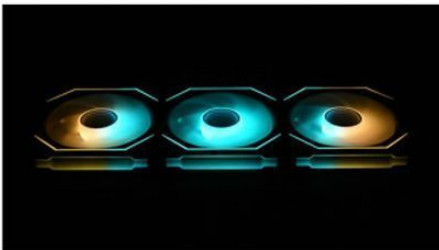
Angle Fan Frame  
&  
Side Infinity Mirror LED



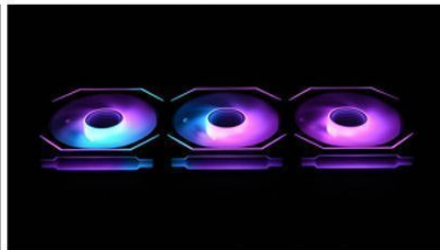
Fan Blade & Center Infinity Mirror  
+  
Angle Fan Frame  
&  
Side Infinity Mirror LED



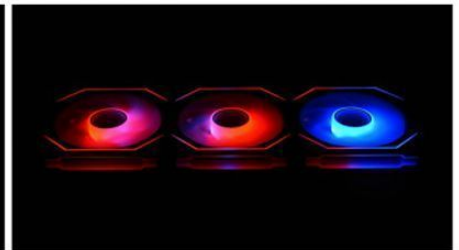
Option 2. Select the combining lighting mode



Tide



Runway



Stack



## UNPRECEDENTED MODULARITY

The 2<sup>nd</sup> generation of UNI FAN SL revisits the interlocking style that can connect up to 4 fans in a cluster and makes cable management simpler and improves compatibility with radiators fittings.

### DAISY CHAIN FAN

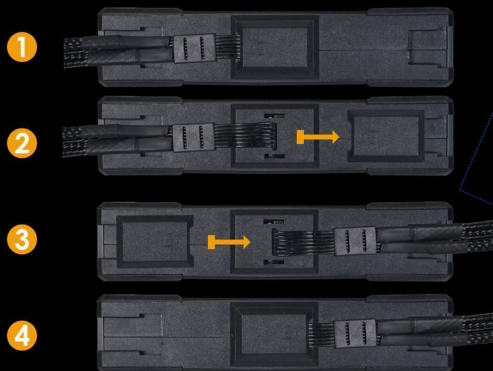
A pin-to-pad contact point passes the signal and power through the fan cluster.

### REMOVABLE KEYLOCK

The interlocking key on each fan is now removable to improve compatibility with radiators fittings.

### REVERSIBLE CABLE MODULE

The cable module is now placed at the center of the fan and can switch orientation to reduce clearance issues with the radiator inlet and outlet.





**Infinity Mirror**



**Daisy-Chain Design**



**Silence at  
High Fan Speed**



**L-Connect 3  
Software**



**Start/ Stop Fan**



**Cableless  
with Controller**

## Specifications

---

# SPECIFICATIONS

<b>PRODUCT NAME</b>	LIAN LI UNI FAN SL-INF 120 RGB			
<b>MODEL</b>	UF-SLIN120-3B	UF-SLIN120-1B	UF-SLIN120-3W	UF-SLIN120-1W
<b>COLOR</b>	Black		White	
<b>NUMBER OF FANS</b>	3	1	3	1
<b>CONTROLLER</b>	Yes	No	Yes	No
<b>CONNECTOR TYPE</b>	4 × 7-PIN	1 × 4-PIN PWM + 3-PIN ARGB	4 × 7-PIN	1 × 4-PIN PWM + 3-PIN ARGB
<b>FAN DIMENSION</b>	120 X 122.1 X 25 (mm)			
<b>RATED VOLTAGE</b>	DC 12V (FAN) & 5V (LED)			
<b>FAN SPEED</b>	0, 200~2100 RPM			
<b>MAX. AIR PRESSURE</b>	2.66 mmH2O (Maximum)			
<b>MAX. AIRFLOW</b>	61.3 CFM (Maximum)			
<b>ACOUSTIC NOISE</b>	29 dB(A) Max			
<b>LOCKED CURRENT</b>	≥ 50mA			
<b>BEARING TYPE</b>	Fluid Dynamic Bearing (FDB)			
<b>START-UP VOLTAGE</b>	DC 6.0V			
<b>INPUT CURRENT</b>	180mA (FAN) /600mA (LED)			
<b>INPUT POWER</b>	5.16W			
<b>WARRANTY</b>	2 years			

# PACKAGE CONTENT



SLIN120 Triple Pack Black



SLIN120 Single Pack Black



SLIN120 Triple Pack White



SLIN120 Single Pack White

## SIMPLE CONNECTION WITH CONTROLLER

The all-new cable module and controller simplify cable management and provide efficient power to the fans.

### ONLY ONE CABLE



Combining both the power cable and the lighting cable into a single cable, the cable module uses a 7-pin connector to connect to the controller, efficiently reducing the number of cables cluttering the PC build.



Note: The single pack includes a cable module that features a 4-PIN PWM cable and a 3-PIN 5V ARGB cable to connect directly to the motherboard.

### 16 FANS IN ONE GO

The included controller in the triple pack can support up to 16 fans (4 fans in each group) and 2 SM-type connecting devices.



#### SM TYPE PORT

Compatible with the Galahad AIO pump ARGB cable. Each port supports a 5W maximum output.

SYNC 1 port syncs to the lighting effect of port 4 and SYNC 2 port syncs to the lighting effect of port 2

#### FAN GROUP ARGB + PWM SIGNAL

Supports clusters of up to 4 fans.

#### 2 × SATA CABLE

Total maximum input of 29W

#### USB CABLE

Plug to 9 pin USB header



#### 5V ARGB / 4 PIN PWM CABLE

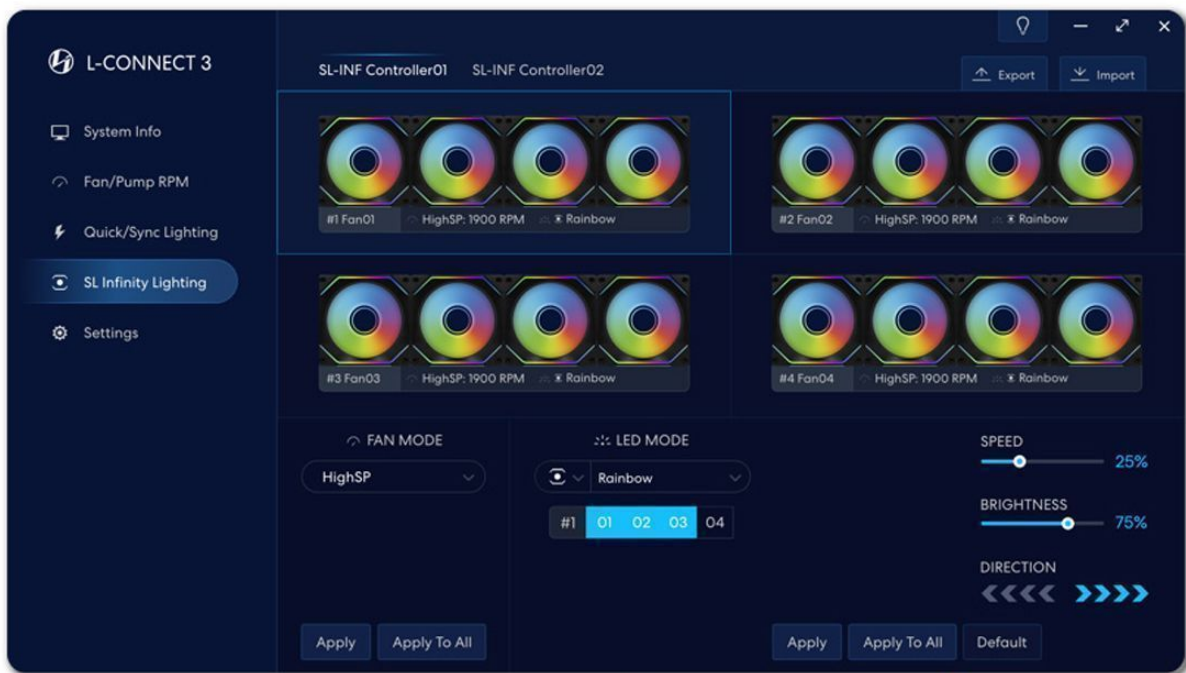
Connect for motherboard sync function.

Note: Please lower the brightness of static white when connecting more than 9 SL-Infinity fans synchronized to the motherboard. Failing to do so may cause inaccurate colors.

# L-CONNECT 3 SOFTWARE TO CONTROL SL-INF FANS

Control and preview with precision the lighting effect of the SL-Infinity fans with the new L-Connect interface.

<https://lian-li.com/L-Connect3/>



Select lighting effect of blades / fan frame / both LED

Set personalized color / brightness / speed / direction

## INTELLIGENT START/ STOP FAN

Unique to the SL-Infinity fans, L-Connect 3 features a Start/ Stop mode to completely stop the fan when the CPU or GPU is running below your set temperature (the maximum 50°C), achieving minimal acoustic levels when the system is at low temperature.



## SYNC FAN SPEED TO MOTHERBOARD

L-Connect 3 now offers an option to sync fan speed to the motherboard, also known as the PWM mode in the earlier L-Connect version.

Click to pass fan speed control to motherboard

The screenshot shows the L-CONNECT 3 interface with the following data:

Fan	SL-INF Controller01	SL-INF Controller02
#1	MyFanA: QUIET, CPU 45°C, 1037 RPM	MyFanE: HighSP, CPU 45°C, 1037 RPM
#2	MyFanB: HighSP, GPU 70°C, 1850 RPM	MyFanF: HighSP, GPU 70°C, 1850 RPM
#3	MyFanC: QUIET, CPU 45°C, 500 RPM	MyFanG: QUIET, CPU 45°C, 500 RPM
#4	MyFanD: HighSP, CPU 45°C, 1037 RPM	MyFanH: QUIET, CPU 45°C, 500 RPM

The 'Fan RPM Setting' graph shows a temperature-based fan speed curve with the following data points:

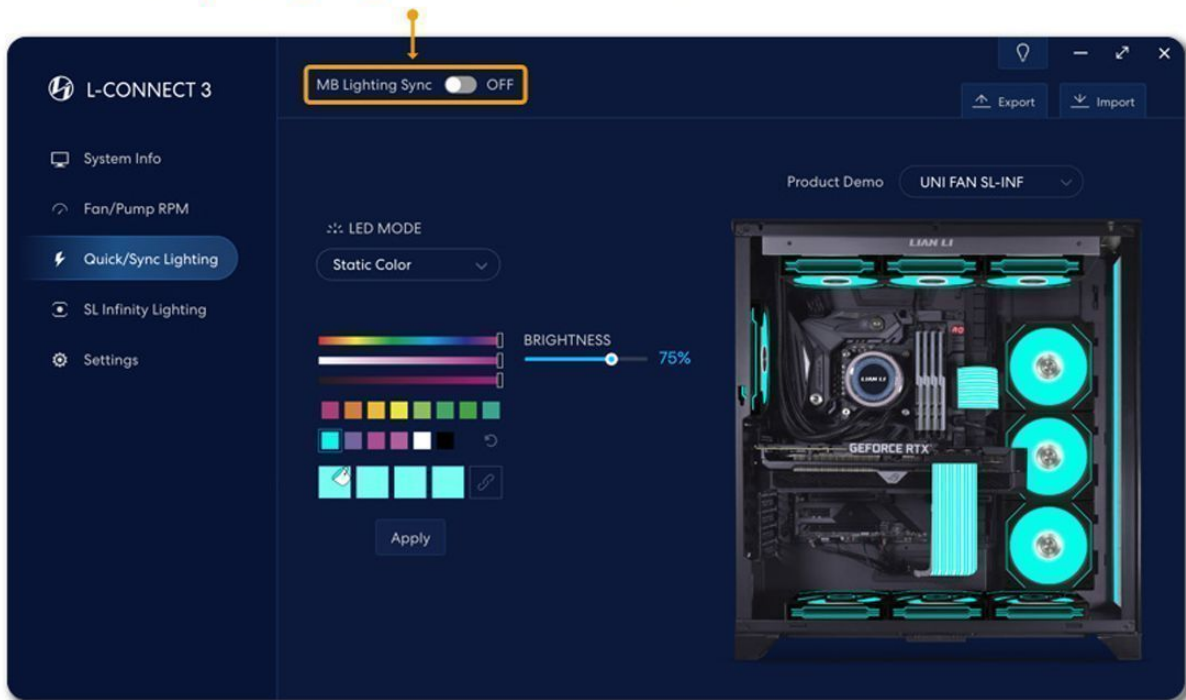
Temperature (°C)	Fan Speed (%)
10°C	20%
20°C	30%
30°C	40%
40°C	50%
50°C	50%
60°C	80%
70°C	100%



## QUICK SYNC LIGHTING WITH UNI FAN SL/ AL AND STRIMER PLUS V1/V2

The quick sync function saves time to synchronize all LIAN LI device lighting effects with one click. Moreover, synchronize all devices to the motherboard software with one click.

Click to pass lighting control to motherboard



## Additional Information

---

Brand	Lian-Li
SKU	UF-SLIN120-1W
Weight	3.0000
Color	White
Fan Dimensions	120mm
Fan Width	27mm
Fan Connection	4-Pin PWM
Fan Voltage	12 VDC
Fan RPM	1900
Fan CFM	58
Fan Noise (dB)	31
LED Color	RGB
Vendor SKU/EAN	4718466011725

