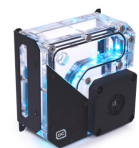


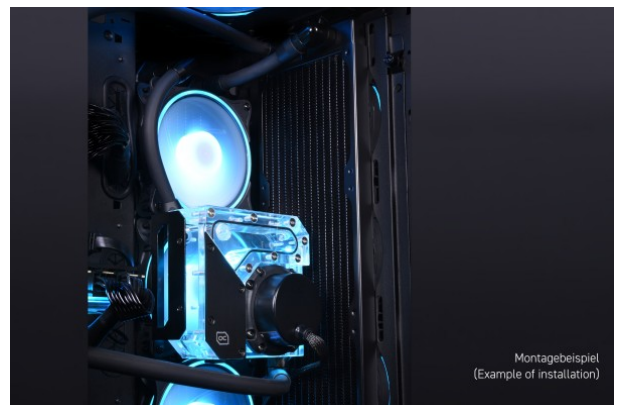
Alphacool Rise Flat Reservoir D5

\$114.95

Product Images



Montagebeispiel
(Example of installation)



Montagebeispiel
(Example of installation)



Short Description

The Alphacool Rise Flat expansion tank has an integrated pump top for powerful D5 pumps. The combination of pump top and expansion tank is made entirely of acrylic. This makes maintenance and control of the water circuit much easier and gives the expansion tank a unique design. In addition, Alphacool's Rise Flat has 5 individually controllable 5V aRGB LEDs that create unique lighting effects. Thanks to the flat design, the reservoir can fit into even the tightest case.

Description

The Alphacool Rise Flat expansion tank has an integrated pump top for powerful D5 pumps. The combination of pump top and expansion tank is made entirely of acrylic. This makes maintenance and control of the water circuit much easier and gives the expansion tank a unique design. In addition, Alphacool's Rise Flat has 5 individually controllable 5V aRGB LEDs that create unique lighting effects. Thanks to the flat design, the reservoir can fit into even the tightest case.

Features

Compact design, flexible use

Due to the flat, compact design and the high number of connections, the Rise Flat reservoir can be used flexibly and can also be installed in the tightest of spaces. With the help of the mounting kit included in the scope of delivery, the reservoir can be mounted free-standing in the case, on a radiator or at free fan positions (see mounting example).

Connection options

The Rise Flat expansion tank has a total of 5 inputs and one output. All connections use a G1/4" thread. The 5 inlets are perfectly placed over the entire expansion tank. This allows for easy filling and draining and facilitates maintenance of the entire water circuit.

Brilliant lighting

On the side of the expansion tank, 5 digitally addressable 5V RGB LEDs can be installed, which create a unique, very noble-looking illumination. The digital aRGB LED lighting is connected via a JST 3-pin connector and can be controlled with a digital RGB controller (e.g. Alphacool Aurora Eiscontrol, Art.15360) or a digital RGB capable mainboard.

Maintenance

The acrylic reservoir allows visual control of the water cooling level. A total of 5 G1/4" inlets allow easy filling, draining and venting of the water circuit.

Compatibility

The Rise Flat AGB has an integrated pump top and is compatible with all original D5 pumps as well as all Alphacool VPP pumps. The pump retaining ring, a pump O-ring and all screws are included in the scope of delivery.

(Note: The pump shown in the installation example is not included in the scope of delivery! The reservoir can only be used in combination with a compatible D5/VPP pump.)

Specifications

Technical data	
L x W x H	120 x 120 x 50 mm
Pump compatibility	D5
Capacity	200ml
Material Pump top	acrylic
Material reservoir	acrylic
Connection	6x G1/4" internal thread
Maximum working temperature	60 °C
Pressure tested	0,8 Bar
Quantity of digital aRGB LEDs	5
Power digital aRGB LEDs	5V
Power connector digital aRGB LEDs	3-pin JST (male & female switch)
Weight	565 g
Color	clear

Note on application

Please use only in conjunction with clear transparent water cooling fluids. The particles and additives in Pastel liquids can clog and permanently damage water cooling products such as radiators, pumps, coolers and hoses. This can result in voiding the manufacturer's warranty as well.

Technical details

Manufacturer:	Alphacool
Color:	Transparent
Preinstalled pump:	No
Connector:	G1/4" inner thread
Fillport:	G1/4" inner thread
Pump compatibility:	For 1x D5
Model of reservoir:	Other reservoirs
LED hole:	Available (for 5mm LEDs)
Number of connections:	6
Volume:	200ml
Material:	Acryl
Dimensions:	120 x 120 x 50mm

Additional Information

Brand	Alphacool
SKU	AC-15074
Weight	1.5000
Color	Black
Vendor SKU/EAN	4250197150743

