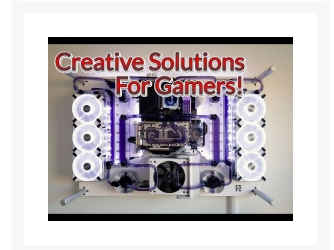
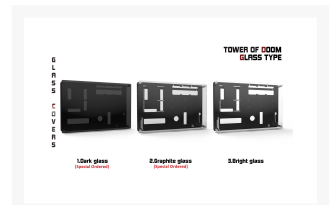
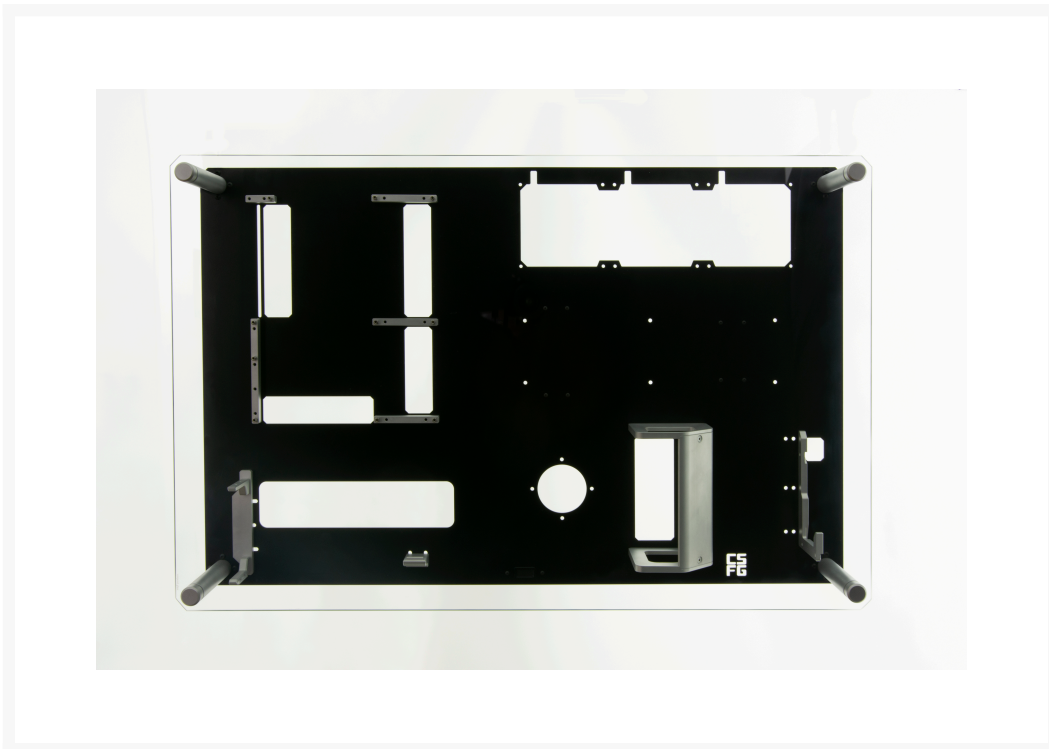


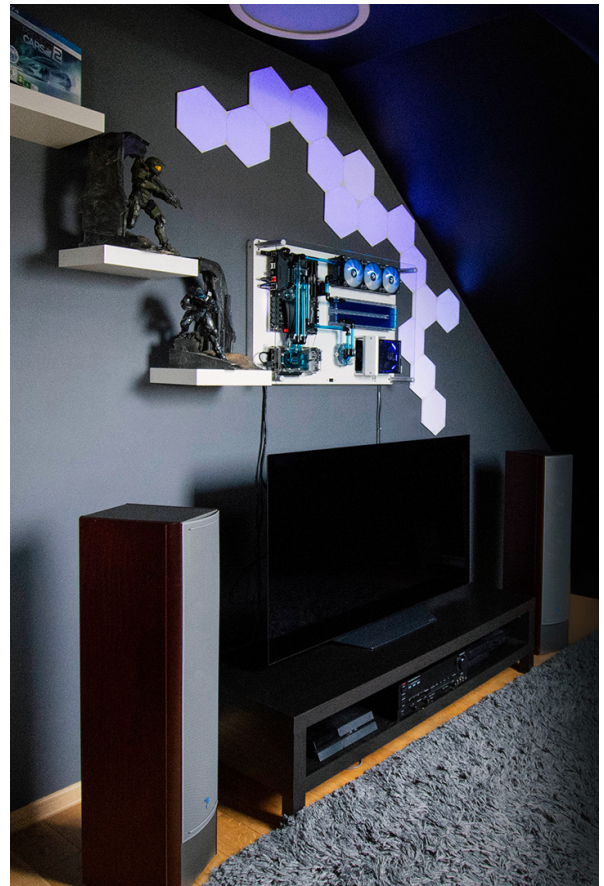
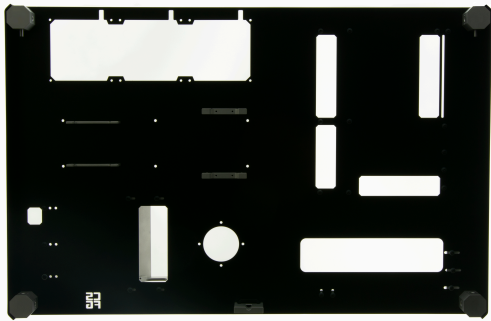


# Creative Solutions For Gamers - Tower of Doom - Black

\$759.95

## Product Images





## Short Description

Tower of Doom is a wall-mounted ATX chassis built for water cooling of enthusiasts for enthusiasts. The most

unique features are its wall-mounted design that keeps the chassis close to the wall, the high-quality material choices in the form of thick CNC-milled and laser-cut aluminum and tempered glass.

## Description

---

Tower of Doom is a wall-mounted ATX chassis built for water cooling of enthusiasts for enthusiasts. The most unique features are its wall-mounted design that keeps the chassis close to the wall, the high-quality material choices in the form of thick CNC-milled and laser-cut aluminum and tempered glass. The wall-hung thin but open design allows a very low degree of dust collection, which removes the need for dust filters. The open solution also means that the entire room in which the chassis is placed becomes part of the cooling and air flow.

Tower of Doom has the same footprint against the wall as its big brother The Crow but at half the thickness, it is our thinnest chassis with a depth of only 100mm.

The design of the chassis follows a clear and strict design language with straight lines that are broken off with the rounded corners and cylindrical distances for the tempered glass.

The whole concept makes it easy for enthusiasts to create a piece of art where quality permeates the entire construction, everything from the CNC-milled aluminum spacers for the motherboard to the larger holders for the power supply and graphics card. With the help of well-placed cross-sections, it will be easy to get good cable management like a real professional.

## PURCHASE THE FOLLOWING TO COMPLETE SET:

1 X TOWER OF DOOM

1 X BLOOD FOUNTAIN

1 X SPECTRE

Comes with Glass type "Bright Glass". Shades "Graphite Glass" and "Dark Glass" are available for special order. Please contact us at [Sales@performance-pcs.com](mailto:Sales@performance-pcs.com) for details.

## Features

---

To simplify pipes and hose routing for different types of graphics cards, the graphics card holder and graphics card support have been made adjustable to be able to largely adjust the graphics card's position vertically, all so that your artwork will be exactly the way you want it.

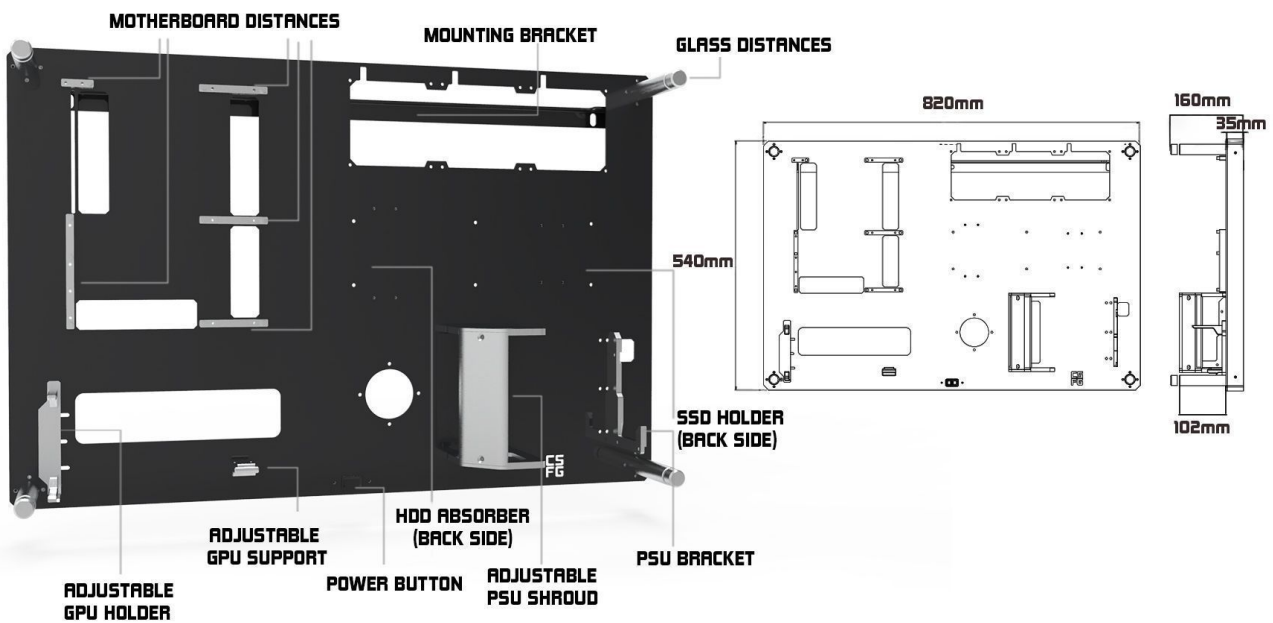
At the back of the chassis, there are options to hide your storage devices, fan controls, RGB controls, USB hubs and cabling. All in order to give you the best opportunities to realize your own piece of art.

With a 4 mm thick window of tempered glass on spacers in sanded and anodized aluminum, every detail of your artwork will be visible while protecting the sensitive components from long fingers and wild VR movements.

## Specifications



# TOWER OF DOOM



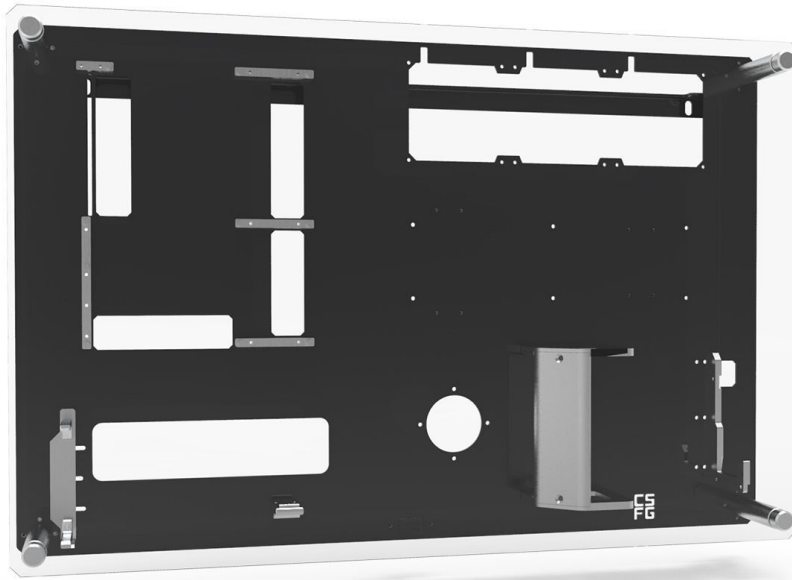


Creative Solutions  
For Gamers

# TOWER OF DOOM

## SPECIFICATIONS

COLOR	Black, White
CASE MATERIAL	Aluminium
GLASS COLOR	Transparent, Graphite, Dark
GLASS DISTANCES	4
RECOMMENDED PCI-RISER LENGHT	400-600mm
3.5" DRIVE ABSORBER	1
2.5" DRIVE BRACKET	1 (Dual)
MOTHERBOARD COMPATIBILITY	Atx
MOTHERBOARD DISTANCES	5
GPU-BRACKET VERTICAL	1
PSU-BRACKET VERTICAL	1
MAX GPU LENGHT	320-330mm
MAX PSU LENGHT	185mm
PSU FORM FACTOR	Atx
MAX CPU COOLER HEIGHT	Waterblock
EXPANSION SLOTS	2
FAN OPTIONS	3x120mm
RADIATOR OPTIONS	1x360mm
WEIGHT (WITH GLASS)	10kg
DIMENSIONS	540x820x160mm
SIDE PANELS	2
MOUNTINGPLATE	1
POWER BUTTON	1
TOWER OF DOOM	1
WALLDISTANCES	4



## Additional Information

Brand	CSFG
SKU	CSFG-TOD-BK
Weight	100.0000
Color	Black
Motherboard Support	ATX

