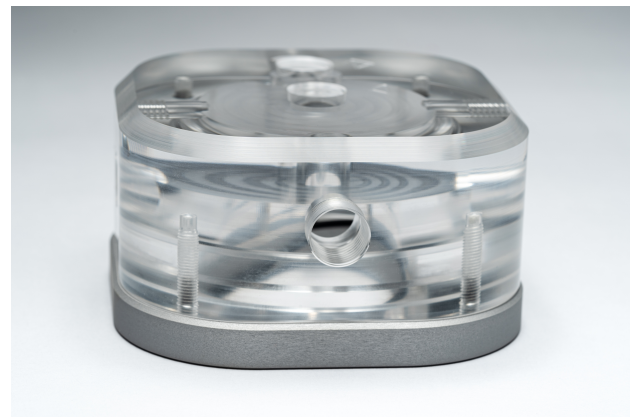
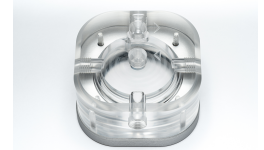


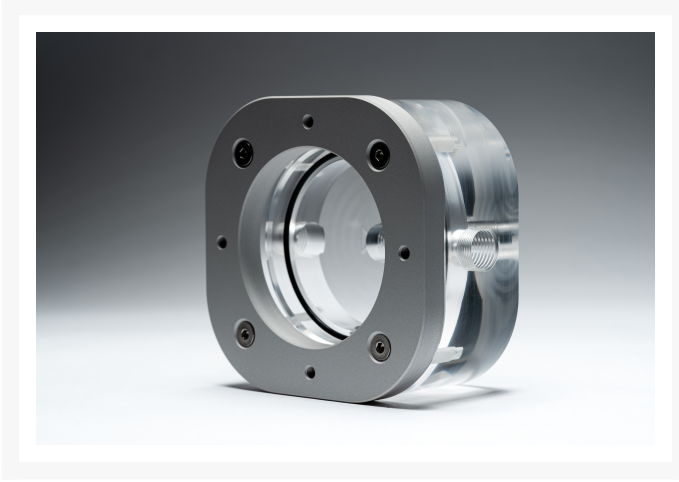
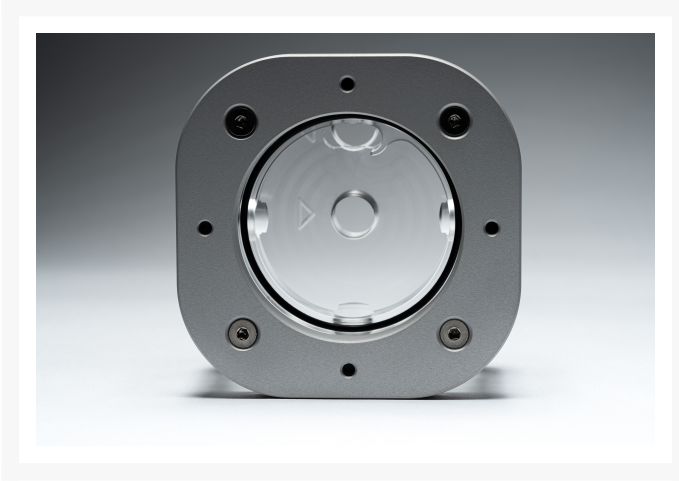


Creative Solutions For Gamers - Spectre

\$119.95

Product Images





Short Description

Specter is a pump-top for D5 pumps created for The Crow and Tower of Doom. The design language follows our other products concepts and the top is made of high-quality acrylic and the base plate in CNC-milled aluminum.

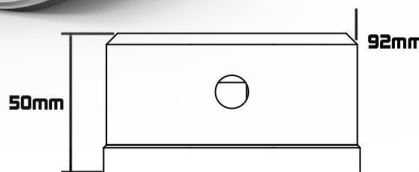
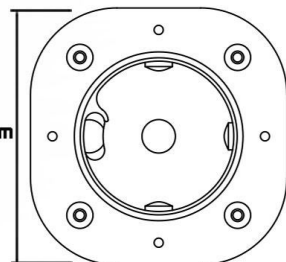
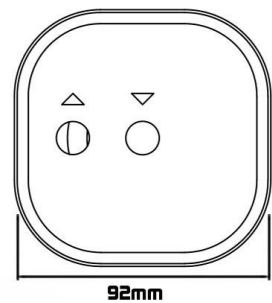
Description

Specter is a pump-top for D5 pumps created for The Crow and Tower of Doom. The design language follows our other products concepts and the top is made of high-quality acrylic and the base plate in CNC-milled aluminum.

Each specimen of Specter is leak tested with air before it is packed and leaves our workshop.

Specifications

SPECTRE



SPECIFICATIONS

LENGTH:	92mm
WIDTH:	92mm
HEIGHT:	50mm
WEIGHT:	390g

Additional Information

Brand	CSFG
SKU	CSFG-SPE
Weight	1.0000
Color	Clear
Pump Type	Laing D5

