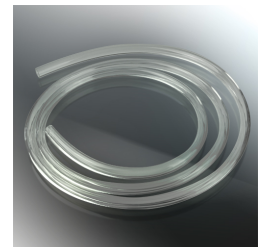




Rajintek SCYLLA ELITE CA240 Kit (Soft tube)

Special Price
\$237.97 was
~~\$339.95~~

Product Images







Short Description

SCYLLA ELITE CA360/CA240, Raijintek's full set – The Soft Tube Water Cooling Kit, Top & complete premium quality liquid cooling solution for your water cooling systems.

Description

Introduction

SCYLLA ELITE CA360/CA240, Raijintek's full set – The Soft Tube Water Cooling Kit, Top & complete premium quality liquid cooling solution for your water cooling systems. It contains a Full Copper FORKIS ELITE CPU water block, a performing ANTILA DDC RBW ADD pump/reservoir, a full copper 360/240mm radiator, 2 bottles of 500 mml RAIQAUA-T1 Pure Clear premium coolant, 3 high static pressure EOS 12 ADD PWM fans, 6 full copper 180° fitting, 200cm PVC high quality soft tubes, and a combination of 5 port 5V Addressable (Rainbow) & 5 port PWM Control Hub with Remote controller, M/B connecting cable for Synchronization with your M/B or Remote. Raijintek delivers the best water-cooling build experience for all the enthusiast.



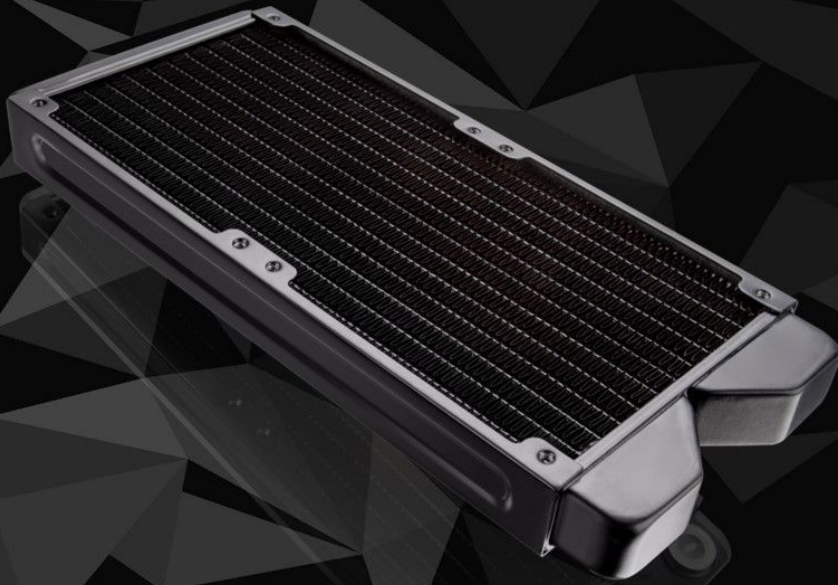
FORKIS ELITE CPU WATER BLOCK



FORKIS ELITE

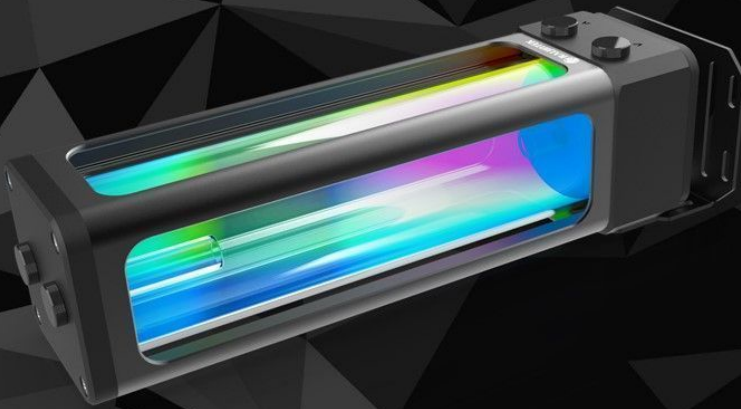
- 3D micro-structure flow tunnel inside
- Full copper material melted by alloying brazing
- Nickel-plated & mirror polishing treatment
- G1/4" thread able to upgrade water cooling system easily connected to all components
- High compatible universal solid back-plate to prevent M/B distortion
- Operating steady & silent & User friendly installation
- High compatible installation for all present modern CPU

CALORE ELITE CA240 COOPER RADIATOR



- Made of Copper and 27mm thickness radiator
- 12-set flat tube design
- High-density copper fins
- Copper chamber and housing
- Optimal design for efficiently pulling heat away
- Achieving maximum heat dissipation at both low and high airflow operation
- High-Quality Manufacturing Process, Reflow soldering, to attain better heat evacuation
- Square Fan anti-vibration rubber provided to eliminate

ANTILA DDC EVO RBW PUMP



- Rainbow A-RGB (5V Addressable) LED light
- Reliable, light weighted POM construction
- High quality real tempered glass Reservoir
- Support bracket to provide sturdy, reliable and friendly installation
- Easy mounting and connection in multiple locations
- Operating steadily and silently
- Advanced building liquid loop - CPU, GPU, radiator and more DIY components
- Compatible with RAIJINTEK SCYLLA series, Radiator, Water Blocks, Tubes
- Supports 5V Addressable RGB Enabled Motherboards
- Compatible with Raijintek's 5V ADD control set

COPPER FITTING - 180°*6



- Straight fitting * 6pcs
- High-flow and leak-free
- G1/4 thread
- Sturdy, reliable and friendly installation

EOS 12 ADDRESSABLE PWM FAN SYSTEM



- 5V ADD LED brings visible color & brightness uniformity from all direction
- Anti-vibration rubber pads on all corners to minimize movement and noise
- Optimized Nine fan blade design to provide high-volume air flow
- Specific housing design to provide max. static pressure
- PWM function to provide best efficiency for CPU cooling
- Choose a theme that matches your build & customization
- Quite performance, less turbulence and reliable operation
- Easy installation

EOS 12 ADDRESSABLE PWM FAN SYSTEM



- Rainbow ADD with fading, breathing, blinking and single color LED modes
- 5 ports ARGB hub and remote controller
- 5 PWM Ports on Hub: For PWM 4pin (2510) header
- 5V ADD LED brings visible color & brightness uniformity from all direction
- Anti-vibration rubber pads on all corners to minimize movement and noise
- Optimized Nine fan blade design to provide high-volume air flow
- Specific housing design to provide max. static pressure
- PWM function to provide best efficiency for CPU cooling
- Individually controlled ADD LED lighting
- Choose a theme that matches your build & customization
- Quite performance, less turbulence and reliable operation
- Easy installation

RAITUBO-T6 SOFT TUBE



- Medical grade PVC material
- Highly flexible, stain resistant, RoHS complaint
- Resisting twisting and collapse, allowing for tighter bends
- Reliable, non-toxic, and substance free
- Working temperature range from -20°C [-4°F] to 80°C [176°F]
- Easy installation of ID 9.5mm & OD 15.9mm tube design to series connection of more ware blocks

RAIAQUA-T1 COOLANT *2



- Best partner for PC liquid cooling system
- Anti-freeze, preventing PC cooling system from corrosion and cavitation
- Anti-rusting and water scale reducing
- 6 small bottles of color dye (green, red & blue)
- Efficiently reducing the temperature of your PC cooling system

Specifications

ANTILA DDC EVO RBW SPECIFICATION

Product Name	ANTILA DDC EVO RBW
Q'ty	1 pcs
Dimension [W×H×D]	80×95×292 mm [with Bracket]
Reservoir Dimension	60×60×220 mm
Material	POM + Glass + Aluminum + Steel
Weight	1280 g
Screw Threads	G 1/4"
Bearing type	Ceramic Bearing
Maximum Head	6.5 meter
Maximum Discharge	750 L/H
Life Expectance	50,000 hrs
Noise Level	45 dBA [Max.]
Speed	1800 RPM ~ 4800 RPM
Voltage Rating	DC12V
Input Current	1.8A ±10%
Connector	SATA power 2510-3P [NA / NA / Fg]
Addressable LED	12 LED Rainbow (4pin header, 2510 spec) - Addressable LED
LED Control Method	Motherboard control / Remote control (by using Raijintek control hub)
LED Input Connector	4-PIN header (2.5 Crimp)
LED Voltage Rating	5V
Lighting Mode	By MB software or 20 Lighting MODE & 7 different static color choices by Raijintek's 5V ADD control hub

EOS 12 RBW ADD SPECIFICATION

Product Name	EOS 12 RBW ADD-3	EOS 12 RBW ADD-2
Q'ty	3 pcs	2 pcs
Dimension [W×H×D]	120×120×25 mm	120×120×25 mm
Voltage Rating	12V	12V
Starting Voltage	7 V	7 V
Rated Current	0.17A±20%	0.17A±20%
Power consumption	2.1W±20%	2.1W±20%
Speed	800~1800 R.P.M.	800~1800 R.P.M.
Bearing Type	Hydraulic Bearing	Hydraulic Bearing
Air Flow	75 CFM [Max.]	75 CFM [Max.]
Air Pressure	2.3 mmH2O [Max.]	2.3 mmH2O [Max.]
Life Expectance	40,000 hrs	40,000 hrs
Noise Level	28 dBA [Max.]	28 dBA [Max.]
Connector	5V ADD Header PWM 4 pin Header	5V ADD Header PWM 4 pin Header
Weight	390g	260g
Accessories	Screw × 12 ARGB-PWM control hub × 1 Remote controller × 1	Screw × 8 ARGB-PWM control hub × 1 Remote controller × 1

Copper Fitting SPECIFICATION

Copper Fitting 180° Q'ty	6 pcs
Material	Brass
Screw Threads	G 1/4"

RAIAQUA-T1 SPECIFICATION

Product Name	RAIAQUA-T1
Q'ty	2 bottles
Volume	500 ml
Main composition	Water 95% & Propylene glycol 5%
Anti-freezing temperature	-5°C
Color	Transparent

FORKIS ELITE SPECIFICATION

Product Name	FORKIS ELITE
Q'ty	1 pcs
Dimension [WxDxH]	82x82x16 mm
Screw Threads	G 1/4"
Material	Full copper block, nickel-plated, Aluminum + POM
Weight	495 g [w/o clip]
Application – Intel	All Socket LGA 775/115x/1366/201x/2066 CPU (Core™ i3 / i5 / i7 / i9 CPU)
Application – AMD	All AM4/AM3+/AM3/AM2+/AM2 CPU

CALORE ELITE CA360 / CA240 SPECIFICATION

Product Name	CALORE ELITE CA360	CALORE ELITE CA240
Q'ty	1 pcs	1 pcs
Dimension [WxDxH]	393x120x27 mm	273x120x27 mm
Flat Tube	12 sets ; 1.5x16 mm	12 sets ; 1.5x16 mm
FPI (Fin per inch)	17	17
Tube row	13	13
Screw Threads	G 1/4"	G 1/4"
Port	2	2
Material	Copper	Copper
Weight	796 g	571 g
Surface	Black coated	Black coated

Additional Information

Brand	Raijintek
SKU	RJK-0R10B00217
Weight	13.0000
Block CPU Type	Intel/AMD
Pump Type	Laing D5 PWM
Radiator Size	240 (2 x 120mm)
Radiator Thickness	27mm
Reservoir Type	Tube Res
Tube Res Length	220mm
Special Price	\$237.97

