

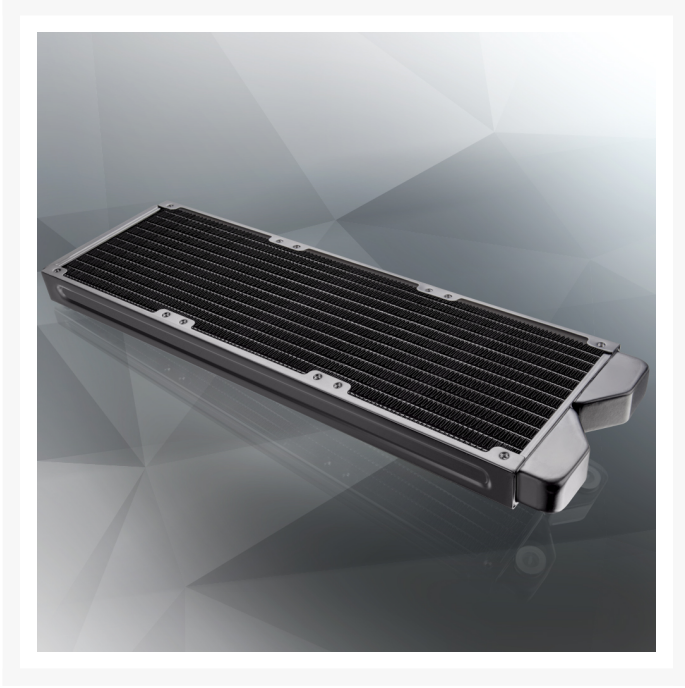
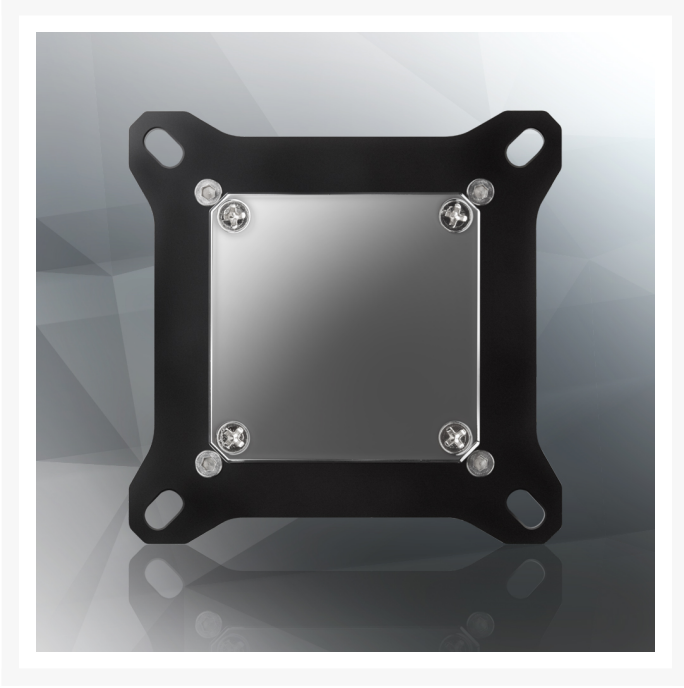
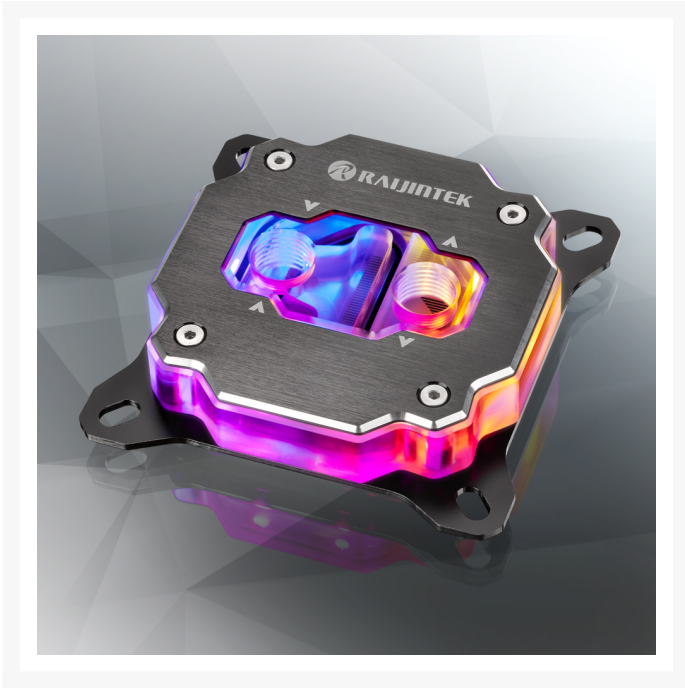
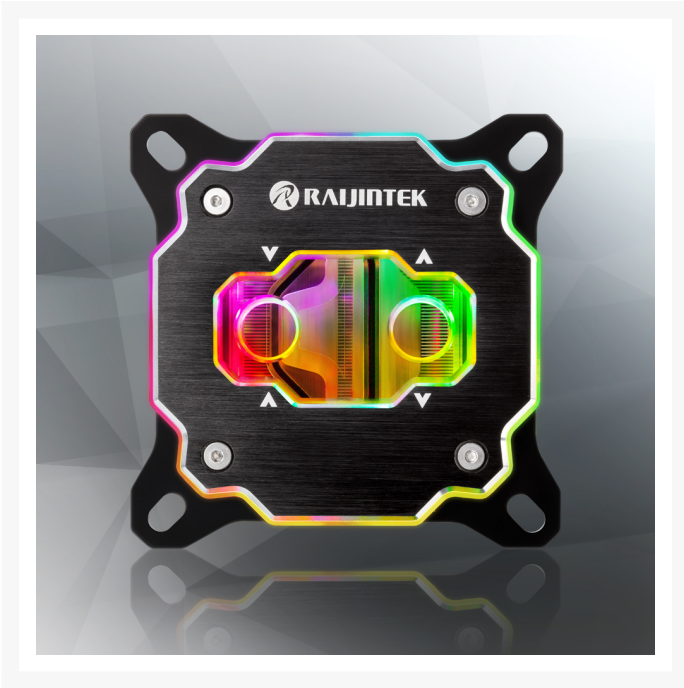


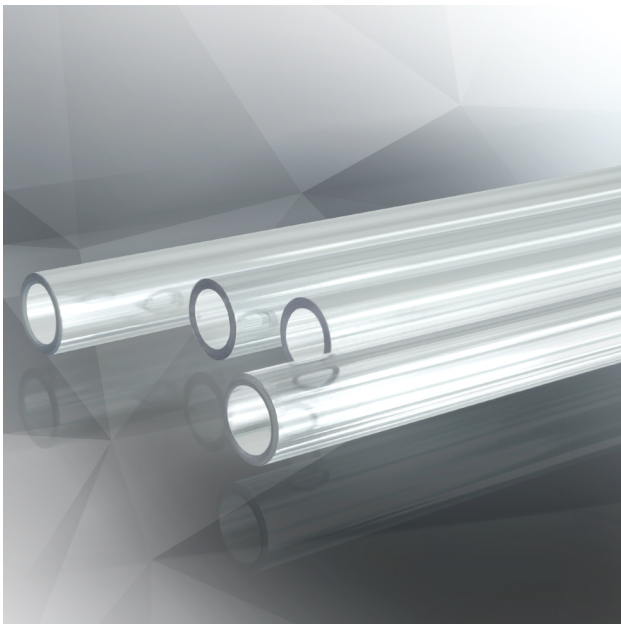
# Rajintek SCYLLA PRO CA360 Kit (Hard tube)

Special Price  
**\$321.97** was  
**\$459.95**

## Product Images







## Short Description

---

SCYLLA PRO CA360/CA240, Raijintek's full set Hard Tube Water Cooling Kit. A Top & total premium quality liquid cooling solution for your water cooling systems.

## Description

---

## Introduction

SCYLLA PRO CA360/CA240, Raijintek's full set Hard Tube Water Cooling Kit. A Top & total premium quality liquid cooling solution for your water cooling systems. It contains a Full Copper FORKIS PRO RBW CPU water block, a high performing ANTILA D5 EVO RBW ADD pump/reservoir combo, a full copper 360/240mm radiator, 2 bottles of 500 mml RAIQUA-T1 Pure Clear premium coolant, 3 high static pressure EOS 12 ADD PWM fans, 12 full copper fittings 90\*6 & 180\*6, 4\*500mm PETG high quality hard tubes, and a 5 port 5V Addressable (Rainbow) & 5 port PWM Control Hub with Remote controller, M/B connecting cable for Synchronization with your M/B or by Remote. Raijintek deliver the best water-cooling build experience for all the enthusiast.



## FORKIS PRO RBW CPU WATER BLOCK



FORKIS PRO RBW

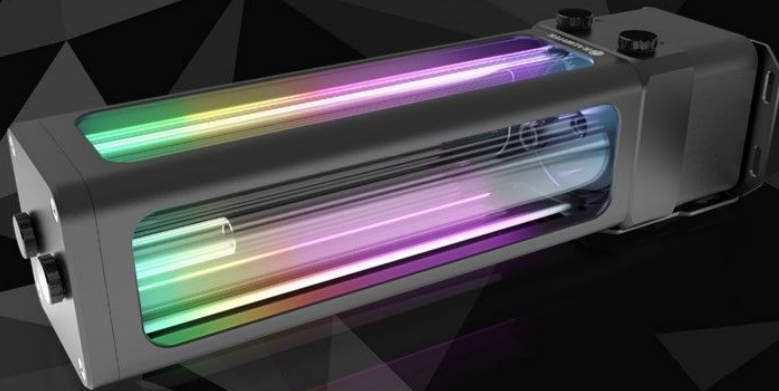
- Rainbow RGB (Addressable) LED light
- 3D micro-structure flow tunnel inside
- Full copper material melted by alloying brazing
- Nickel-plated & mirror polishing treatment
- G1/4" thread able to upgrade water cooling system easily connected to all components
- High compatible universal solid back-plate to prevent M/B distortion
- Operating steady & silent & User friendly installation
- High compatible installation for all present modern CPU

# CALORE ELITE CA360 COOPER RADIATOR



- Made of Copper and 27mm thickness radiator
- 12-set flat tube design
- High-density copper fins
- Copper chamber and housing
- Optimal design for efficiently pulling heat away
- Achieving maximum heat dissipation at both low and high airflow operation
- High-Quality Manufacturing Process, Reflow soldering, to attain better heat evacuation
- Square Fan anti-vibration rubber provided to eliminate

# ANTILA D5 EVO RBW PUMP



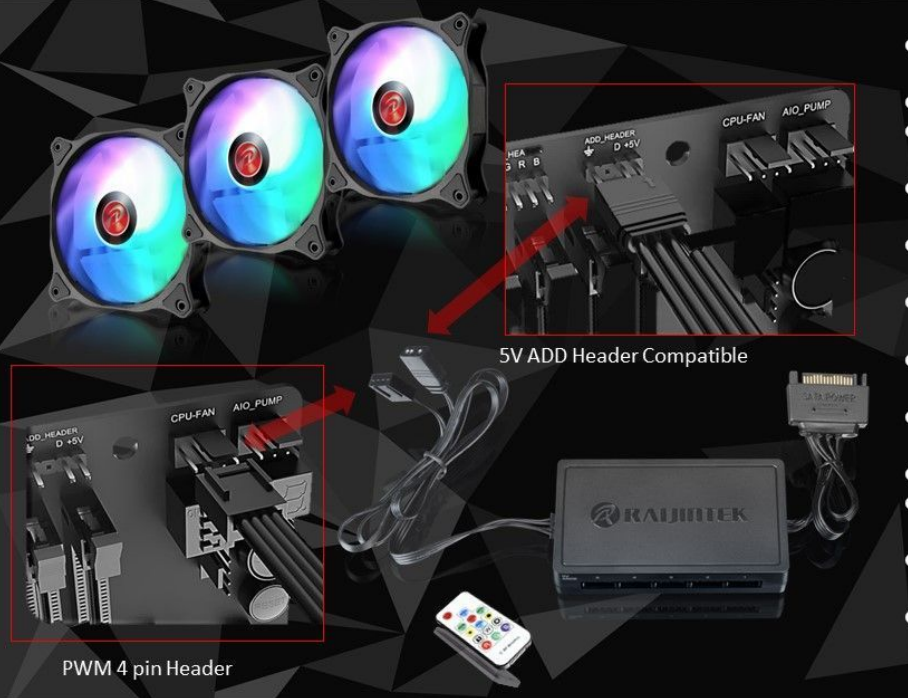
- Rainbow A-RGB ( 5V Addressable) LED light
- Super flow discharge 1500 L/H
- Superior head-lift 13 feet [4 meter]
- Reliable, light weighted POM construction
- High quality real tempered glass Reservoir
- Support bracket to provide sturdy, reliable and friendly installation
- Easy mounting and connection in multiple locations
- Operating steadily and silently
- Advanced building liquid loop - CPU, GPU, radiator and more DIY components
- Compatible with RAJINTEK SCYLLA series, Radiator, Water Blocks, Tubes
- Supports 5V Addressable RGB Enabled Motherboards

# EOS 12 ADDRESSABLE PWM FAN SYSTEM



- 5V ADD LED brings visible color & brightness uniformity from all direction
- Anti-vibration rubber pads on all corners to minimize movement and noise
- Optimized Nine fan blade design to provide high-volume air flow
- Specific housing design to provide max. static pressure
- PWM function to provide best efficiency for CPU cooling
- Choose a theme that matches your build & customization
- Quite performance, less turbulence and reliable operation
- Easy installation

# EOS 12 ADDRESSABLE PWM FAN SYSTEM



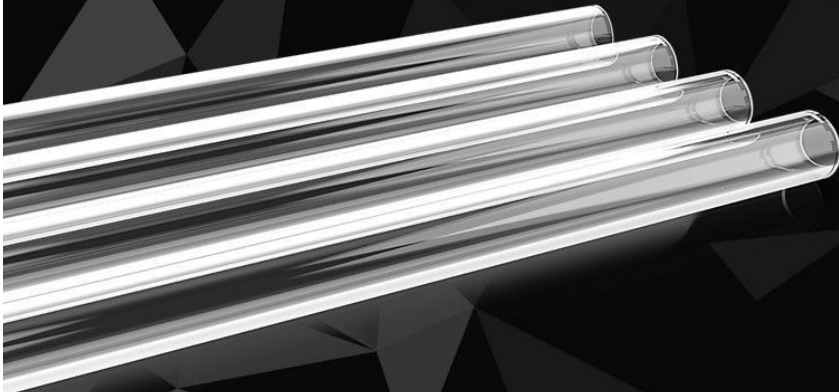
- Rainbow ADD with fading, breathing, blinking and single color LED modes
- 5 ports ARGB hub and remote controller
- 5 PWM Ports on Hub: For PWM 4pin (2510) header
- 5V ADD LED brings visible color & brightness uniformity from all direction
- Anti-vibration rubber pads on all corners to minimize movement and noise
- Optimized Nine fan blade design to provide high-volume air flow
- Specific housing design to provide max. static pressure
- PWM function to provide best efficiency for CPU cooling
- Individually controlled ADD LED lighting
- Choose a theme that matches your build & customization
- Quite performance, less turbulence and reliable operation
- Easy installation

## COPPER FITTING - 90°\*6 & 180°\*6



- 90 degree fitting \* 6pcs
- Straight fitting \* 6pcs
- High-flow and leak-free
- G1/4 thread
- Compatible with OD 14mm hard tube
- Sturdy, reliable and friendly installation

## RAITUBO-H14 PETG HARD TUBE



- Best PETG solid tubing for PC water cooling system
- Working temperature ranges from -4°F (-20°C) to 143.6°F (62°C)
- PETG hard tube, OD 14mm - ID 10mm
- 500mm \* 4pcs
- Great flow and also easier fitting & mounting

# RAIAQUA-T1 COOLANT \*2



- Best partner for PC liquid cooling system
- Anti-freeze, preventing PC cooling system from corrosion and cavitation
- Anti-rusting and water scale reducing
- 6 small bottles of color dye (green, red & blue)
- Efficiently reducing the temperature of your PC cooling system

## Specifications



**ANTILA D5 EVO RBW SPECIFICATION**

Product Name	ANTILA D5 EVO RBW
Q'ty	1 pcs
Dimension [W×H×D]	80×95×305 mm [with Bracket]
Reservoir Dimension	60×60×220 mm
Material	POM + Glass + Aluminum + Steel
Weight	1260 g
Screw Threads	G 1/4"
Bearing type	Ceramic Bearing
Maximum Head	4 meter
Maximum Discharge	1500 L/H
Maximum Pressure	50 PSI
Life Expectance	50,000 hrs
Noise Level	40 dBA [Max.]
Speed	P1 : 1,800 RPM P2 : 2,500 RPM P3 : 3,300 RPM P4 : 4,000 RPM P5 : 4,800 RPM
Voltage Rating	DC12V
Input Current	2.5A ±10%
Connector	SATA 2510-3P [NA / NA / Fg ]
Addressable LED	12 LED Rainbow (4pin header, 2510 spec) – Addressable LED
LED Control Method	Motherboard control / Remote control (by using Rajjintek control hub)
LED Input Connector	4-PIN header (2.5 Crimp)
LED Voltage Rating	5V
Lighting Mode	By MB software or 20 Lighting MODE & 7 different static color choices by Rajjintek's 5V ADD control hub

**EOS 12 RBW ADD SPECIFICATION**

Product Name	EOS 12 RBW ADD-3	EOS 12 RBW ADD-2
Q'ty	3 pcs	2 pcs
Dimension [W×H×D]	120×120×25 mm	120×120×25 mm
Voltage Rating	12V	12V
Starting Voltage	7 V	7 V
Rated Current	0.17A±20%	0.17A±20%
Power consumption	2.1W±20%	2.1W±20%
Speed	800~1800 R.P.M.	800~1800 R.P.M.
Bearing Type	Hydraulic Bearing	Hydraulic Bearing
Air Flow	75 CFM [Max.]	75 CFM [Max.]
Air Pressure	2.3 mmH2O [Max.]	2.3 mmH2O [Max.]
Life Expectance	40,000 hrs	40,000 hrs
Noise Level	28 dBA [Max.]	28 dBA [Max.]
Connector	5V ADD Header PWM 4 pin Header	5V ADD Header PWM 4 pin Header
Weight	390g	260g
Accessories	Screw × 12 ARGB-PWM control hub × 1 Remote controller × 1	Screw × 8 ARGB-PWM control hub × 1 Remote controller × 1

**Copper Fitting SPECIFICATION**

Copper Fitting 180° Q'ty	6 pcs
Copper Fitting 90° Q'ty	6 pcs
Material	Brass
Screw Threads	G 1/4"

**RAITUBO-H14 SPECIFICATION**

Product Name	RAITUBO-H14
Q'ty	4 pcs
Diameter	ID 10mm ; OD 14mm
Material	PETG
Length	500 mm
Color	Transparent

**RAIAQUA-T1 SPECIFICATION**

Product Name	RAIAQUA-T1
Q'ty	2 bottles
Volume	500 ml
Main composition	Water 95% & Propylene glycol 5%
Anti-freezing temperature	-5°C
Color	Transparent

---

Brand	Raijintek
SKU	RJK-OR10B00216
Weight	13.0000
Block CPU Type	Intel/AMD
Pump Type	Laing D5 PWM
Radiator Size	360 (3 x 120mm)
Radiator Thickness	27mm
Reservoir Type	Tube Res
Tube Res Length	220mm
Special Price	\$321.97



## Additional Information