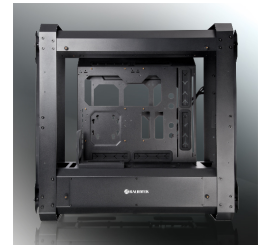
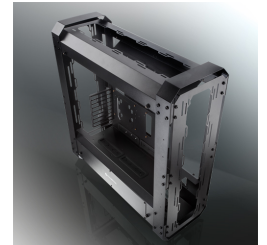


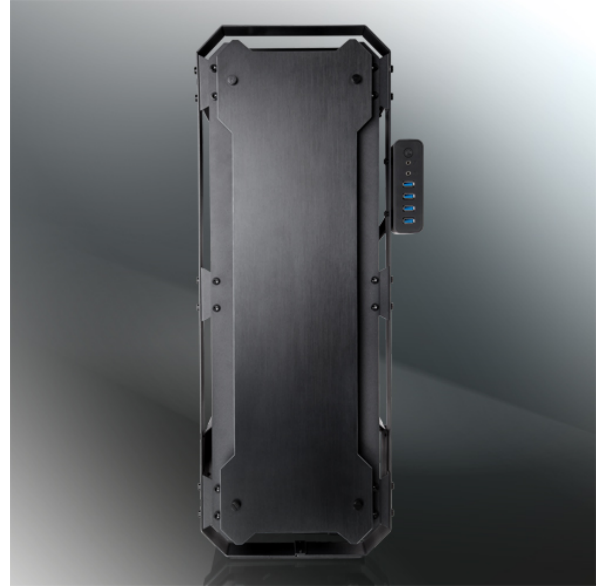
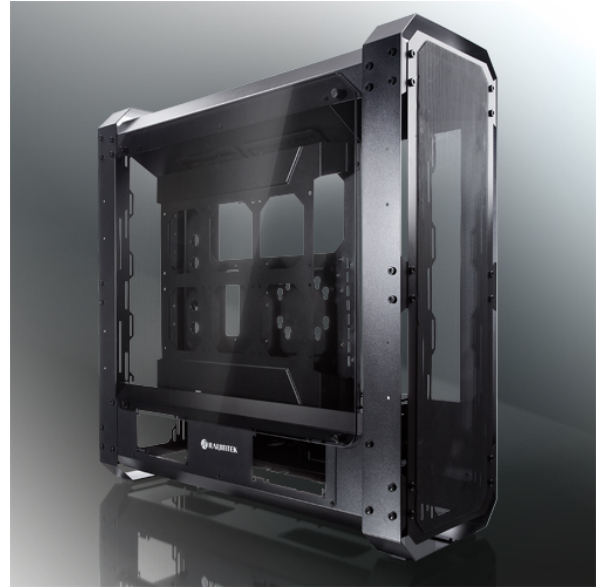
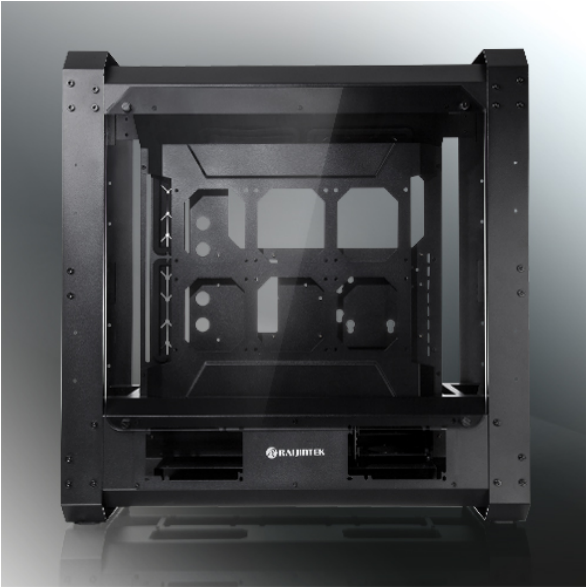


Rajintek ERIS EVO (Tempered glass)

Special Price
\$314.97 was
\$449.95

Product Images







Short Description

Design Art in its best by RAIJINTEK – The All Hardcore Cases – ERIS EVO. The ERIS EVO series case with strengthen structural design is made for the Modder and high end enthusiast in terms of Water Cooling or Air Cooling with the most powerful components on the market, such as Intel i9/i7, AMD AM4/TR4/ Xeon CPU, and especially powerful full – length VGA cards (up to 4 pcs in Quad SLI), the current extreme powerful RTX2080Ti or 5700XT. ERIS EVO case supports from Mini-ITX, DUAL Mini-ITX to Micro ATX, Standard ATX, E-ATX and even EEB workstations motherboards, a maximum of 20 fans from 120 mm , 16 fans from 140mm 6 fans from 200mm and a total of up to three of radiators on the dedicated spaces from 120 – 600mm with a max depth of 65mm, two of 120-360mm with a max depth of 30mm at back, we also offer a dual Mini-ITX support for up to 2 different motherboard system , as well as dual PSU Support you can power up your QUAD SLI VGA's and

two system without any issue.

Description



INTRODUCTION

Design Art in its best by RAIJINTEK – The All Hardcore Cases – ERIS EVO. The ERIS EVO series case with strengthen structural design is made for the Modder and high end enthusiast in terms of Water Cooling or Air Cooling with the most powerful components on the market, such as Intel i9/i7, AMD AM4/TR4/ Xeon CPU, and especially powerful full – length VGA cards (up to 4 pcs in Quad SLI), the current extreme powerful RTX2080Ti or 5700XT. ERIS EVO case supports from Mini-ITX, DUAL Mini-ITX to Micro ATX, Standard ATX, E-ATX and even EEB workstations motherboards, a maximum of 20 fans from 120 mm , 16 fans from 140mm 6 fans from 200mm and a total of up to three of radiators on the dedicated spaces from 120 – 600mm with a max depth of 65mm, two of 120-360mm with a max depth of 30mm at back, we also offer a dual Mini-ITX support for up to 2 different motherboard system , as well as dual PSU Support you can power up your QUAD SLI VGA's and two system without any issue. Four pass through tunnel for your DIY Soft or Hard Tubes, including the option for hiding all cables in the space between back cover. ERIS EVO also came with dust filter on four sides, aluminum cover for both front and rare, two removable HDD cage to give you better space management and install up to 5*3.5" HDD's or SSD'S as well as full-length VGA Card's (up to 4 pcs in Quad SLI), even came with a vertical SLI bracket, two dual MINI-ITX VGA bracket, two detachable power supply compartment cover, 10 IO-BOX placement plus tool-free & easy installation it just got better and better. Looking for the super hard cord chassis, ERIS EVO is the one for all hardcore Hardware enthusiasts.



EVOKE YOUR
PASSION.



Features

Maximum Capacity

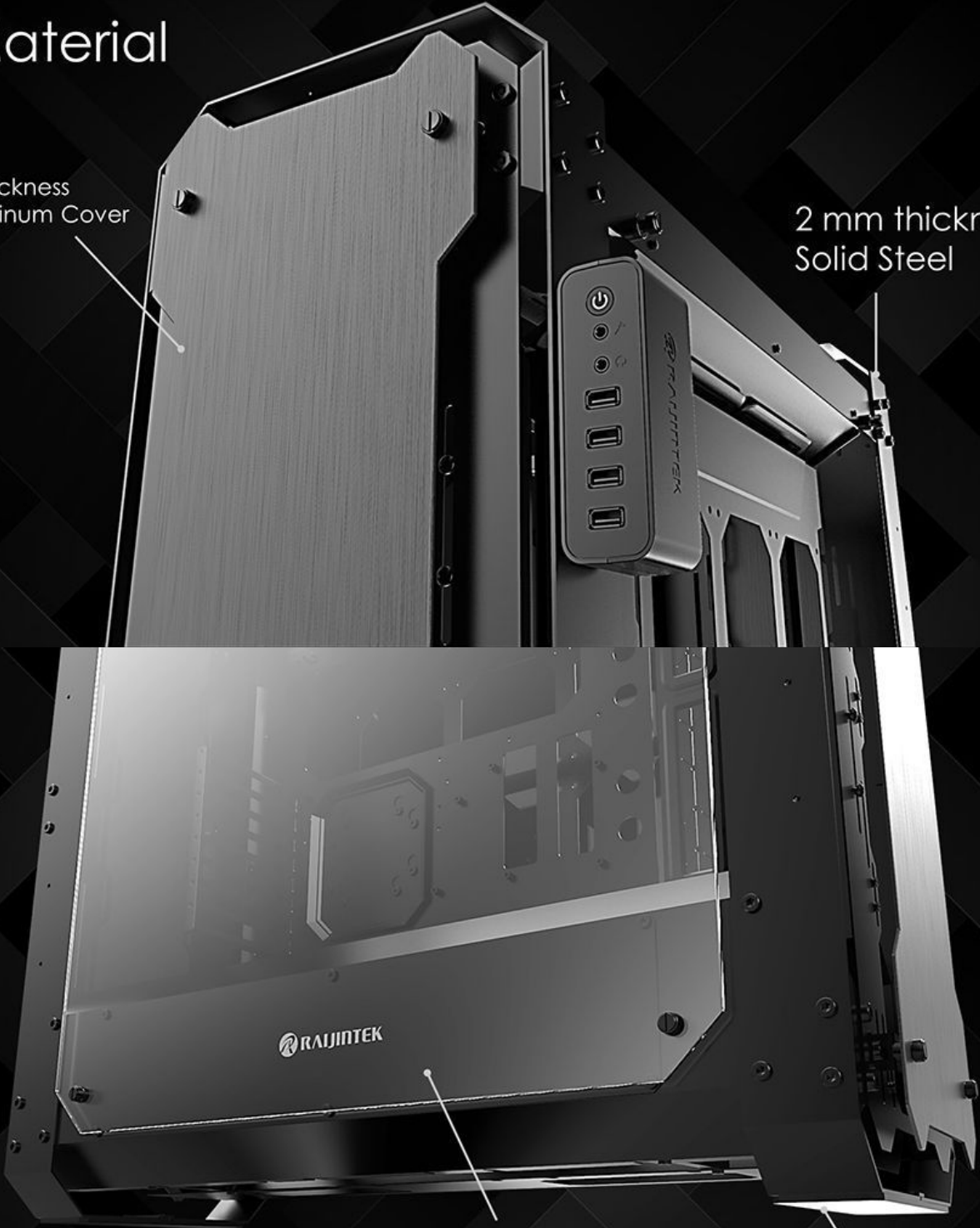
- 600 Radiator x 2 (65mm thickness)
- 480 Radiator x 1 (65mm thickness)
- 360 Radiator x 2 (30mm thickness)
- Up to Long Graphics Card x 4
- Up to EE-B Mother Board
- Up to 1 x Water Pump
- Up to 20 x 120/140mm Fans
- Up to 6 x 20030mm Fans
- Up to 2 Power Supply Unit



Material

3 mm thickness
Full Aluminum Cover

2 mm thickness
Solid Steel



RAIJINTEK

4mm Tempered Glass

10mm Rubber Pad

Side Panel



VGA Card

Up to
512mm

Full-length VGA Card (up to 4 pcs in Quad SLI)



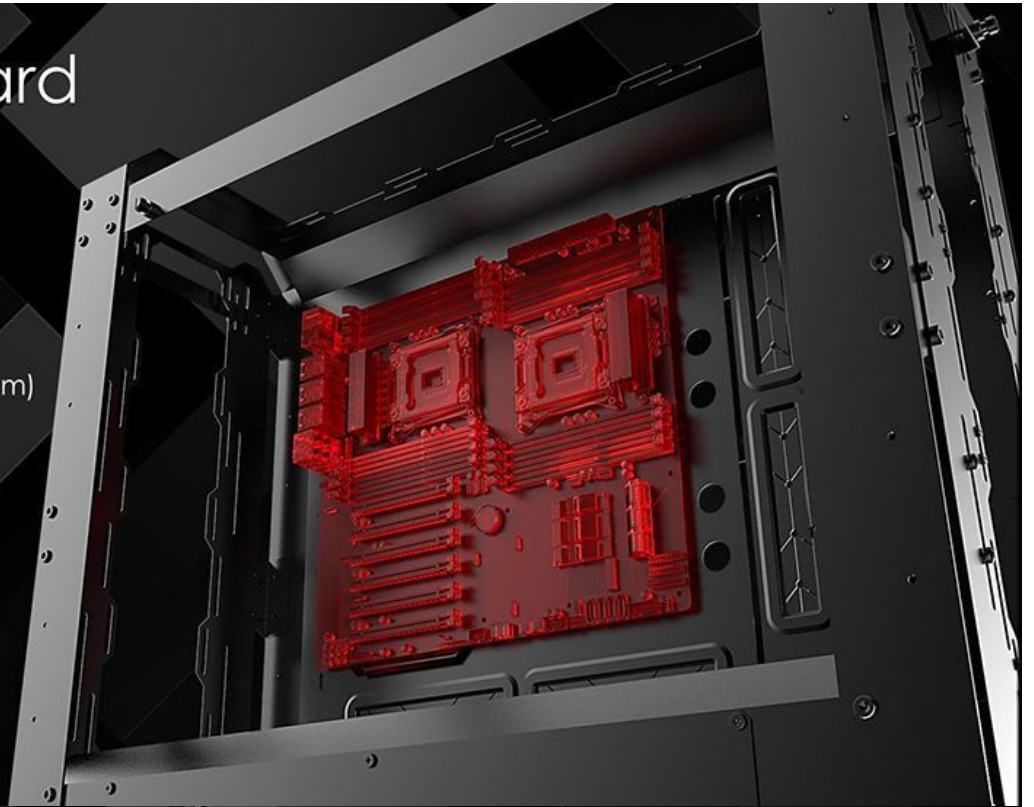
vertical DUAL
VGA card
Installation in
SLI Mode

SLI Bracket

Mother Board

Support up to EEB

- Mini-ITX X2 (170x170mm)
- Micro-ATX (244x244mm)
- Standard ATX (305x244mm)
- E-ATX (305x330mm)
- EEB (305x330mm)



DUAL Mini-ITX SYSTEM

Able to achieve two different MINI-ITX motherboard system

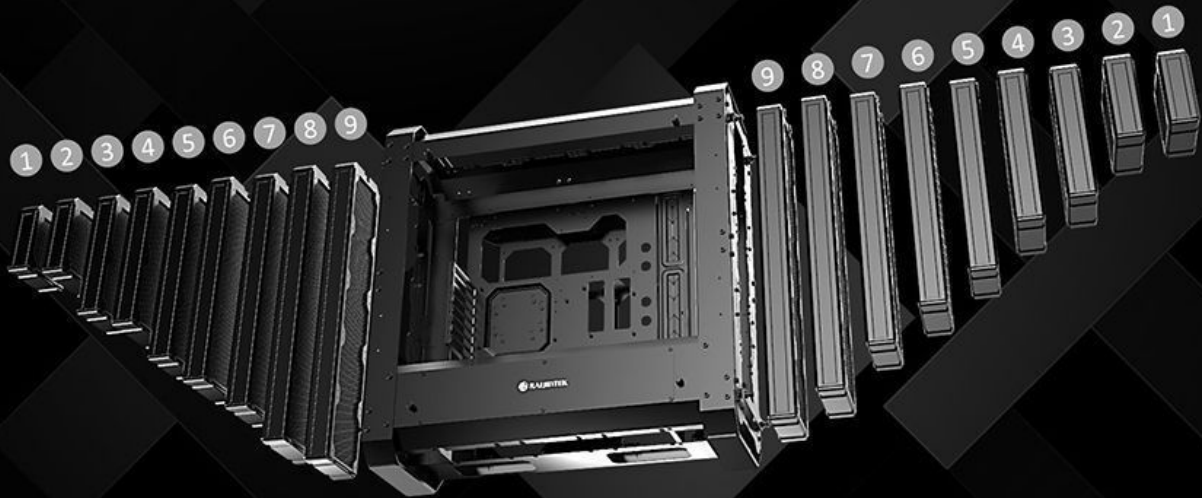


Radiator - Top

- ① 120 Radiator 65mm thickness
- ② 140 Radiator 65mm thickness
- ③ 240 Radiator 65mm thickness
- ④ 280 Radiator 65mm thickness
- ⑤ 360 Radiator 65mm thickness
- ⑥ 480 Radiator 65mm thickness



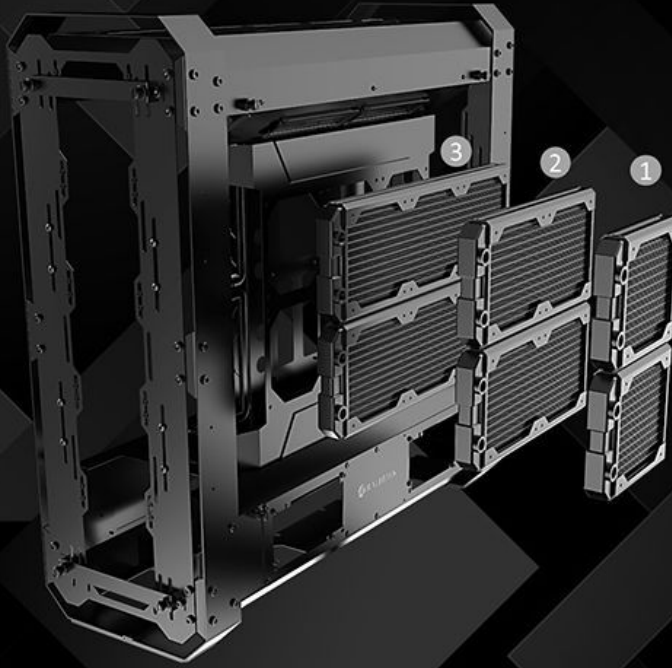
Radiator – Front & Rear



- | | | |
|-------------------------------|-------------------------------|-------------------------------|
| ① 120 Radiator 65mm thickness | ④ 280 Radiator 65mm thickness | ⑦ 480 Radiator 65mm thickness |
| ② 140 Radiator 65mm thickness | ⑤ 360 Radiator 65mm thickness | ⑧ 560 Radiator 65mm thickness |
| ③ 240 Radiator 65mm thickness | ⑥ 420 Radiator 65mm thickness | ⑨ 600 Radiator 65mm thickness |

Radiator – Back Plate Section 1

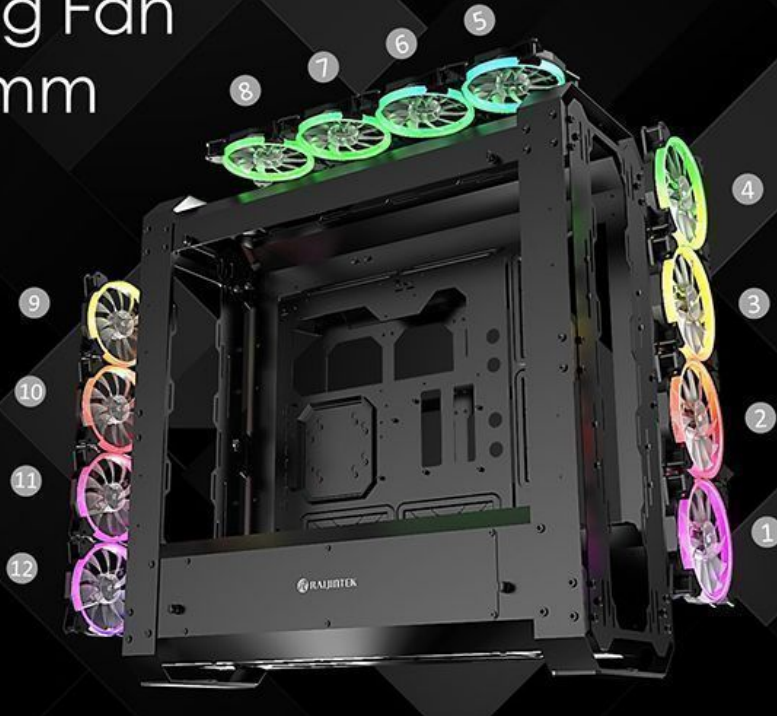
- 1 120 Radiator 30mm thickness
- 2 240 Radiator 30mm thickness
- 3 360 Radiator 30mm thickness



Cooling Fan 12025mm



Cooling Fan 14025mm



Cooling Fan 20030mm



Cooling Fan - Back Side 120x25mm

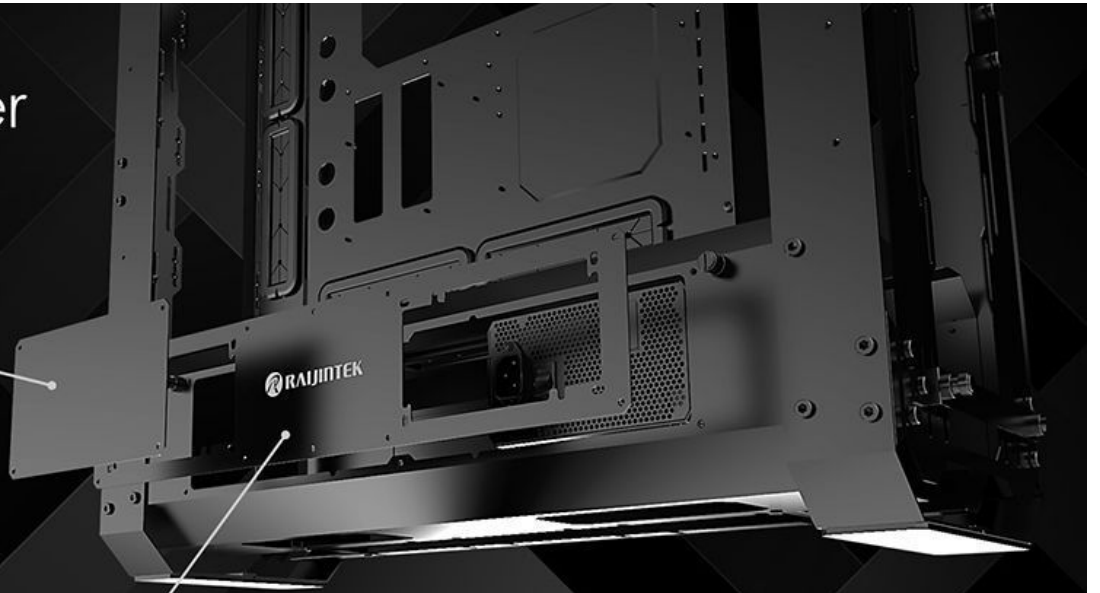


Dual Power

- PS/2 [Internal Bottom-mount]
- PS/2 [Internal Bottom-mount]

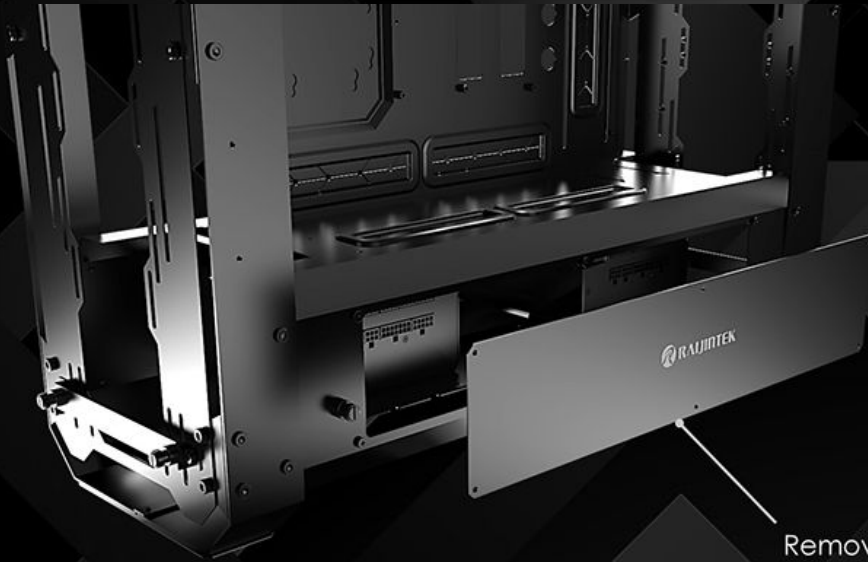
PSU Cover Plate

Can be covered when not in use

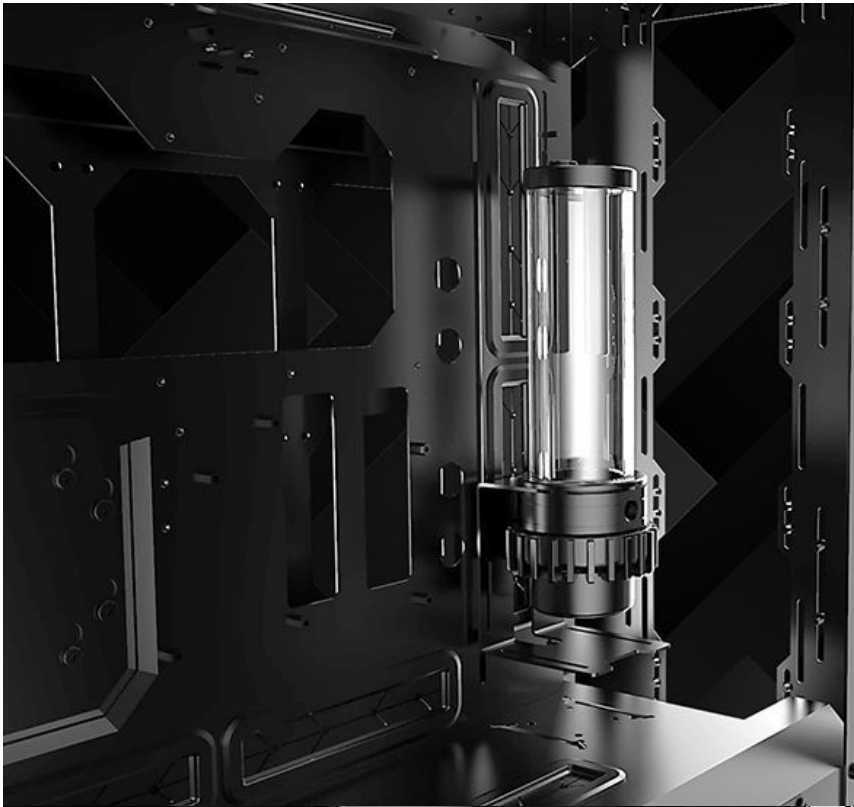


Removable PSU cover for hiding PSU and Cable Management

PSU Cover Plate



Removable PSU cover for hiding PSU and Cable Management



PUMP

With multiple mounting holes give you more options for your choice of DIY accessory it's also compatible with RAIJINTEK-ATLANTIS series D5 level pump



Pass-Through tunnel

For Pass-Through fitting X 4



3.5" HDD

3.5" HDD X5



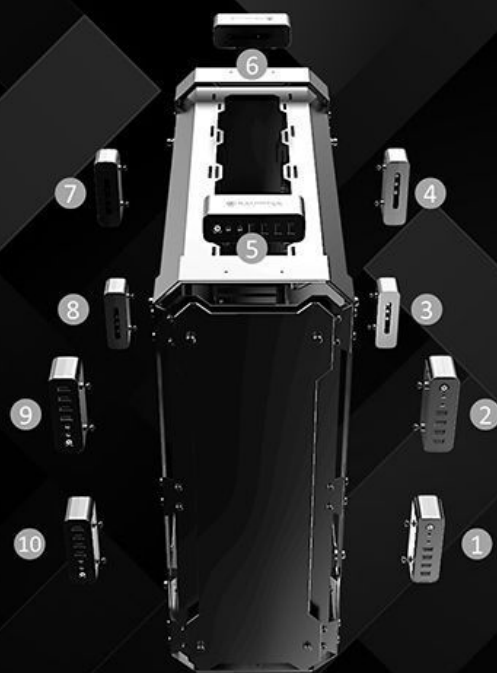
2.5" HDD & SSD

2.5" HDD X5
SSD



IO BOX

10 locations to choose the most comfortable location for yourself



Specifications

SPECIFICATION

Product Name	ERIS EVO
Product Number	OR20B00172
Dimension [WxDxH]	269×722.4×708 mm
Weight	21.8 kg [N.W.] 25.4 kg [G.W.]
Material	Aluminum 3.0mm; SPCC 2.0mm
Color	Coating Black
M/B Support	EEB/E-ATX/ATX/MICRO ATX/Dual MINI-ITX
Drive Bay	Internal 3.5"HDD×5 or 2.5"SSD×5
Expansion Slot	PCI Slots × 8
I/O Panel	USB3.0×4, HD Audio×1
Power Supply	Dual PS/2 [Bottom]
Fan Q'ty	Top: 120/140mm×4 [option] Front: 120mm×5 or 140mm×4 or 200mm×3 [option] Rear: 120mm×5 or 140mm×4 or 200mm×3 [option] Back: 120mm×6 [option]
Radiator Q'ty	Top: 120/140/240/280/360/480mm 65mm thick radiator [option] Front: 120/140/240/280/360/480mm 65mm thick radiator [option] Rear: 120/140/240/280/360/480mm 65mm thick radiator [option] Back: 2×120/140/240/280/360mm 30mm thick radiator [option]
CPU Cooler Height	170mm [Max.]
Graphic Card Length	512mm [Max.]
Side Panel Style	4mm Tempered Glass
Accessories	5 slot vertical PCI-E bracket×1 [for vertical SLI] 2 slot mini-ITX PCI-E bracket×2 [for dual mini system]

Contents:

- ERIS EVO × 1
- Hexagon Screw × 24
Panels/Fan Tray
- Screw L13.6 × 8
Front/Rear Cover
- Screw #6-32 L6 × 6
VGA Cards
- Screw #6-32 L8.5 × 4
3.5"HDD
- Screw M3 L9.5 × 4
2.5"SSD
- Rubber Pad × 8
Cover Bracket
- Stand-off L6 × 3
Motherboard
- Screw M3 L6 × 16
2.5"SSD
- Screw #6-32 L6 × 8
PSU
- Screw M3 L10 × 2
I/O Box Modue

- Screw #6-32 L6 × 46
MB/PCI/PCB/3.5"HDD
- Cable tie × 10
Settle Cable
- Allen Key × 1
Panels/Fan Tray
- Stand-off L15 × 4
PCI Bracket
- Stand-off L9 × 8
Cover Bracket
- Rubber Pad × 8
Cover Backside
- Installation Guide × 1

Additional Information

Brand	Raijintek
SKU	RJK-0R20B00172
Weight	88.0000
Color	Black
Chassis Form Factor	Full Tower
Side Panel	Window
Motherboard Support	ATX
Material	Aluminum
Special Price	\$314.97

