

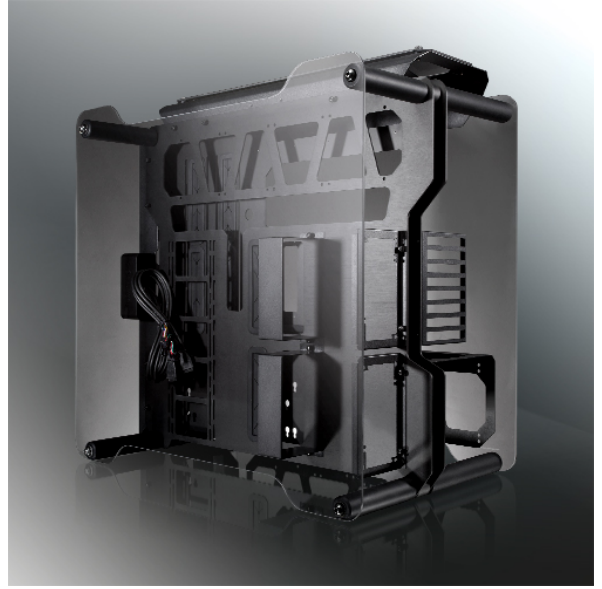


# Rajintek ENYO (EE-ATX)

Special Price  
**\$314.97** was  
**\$449.95**

## Product Images







## Short Description

---

Design Art in its best by RAIJINTEK – The Goliath Chassis of the Open Frame / Benching Cases – ENYO. The Enyo series case is designed to fulfil the biggest dreams of any high end enthusiast in terms of Water Cooling or Air Cooling with the most powerful components on the market, such as Intel i9/i7, AMD AM4 / TR4 CPU, and especially powerful full – length VGA cards (up to 4 pcs in Quad SLI), the current extreme powerful RTX2080Ti. ENYO series case supports up to from Mini-ITX, to Micro ATX, Standard ATX, E-ATX and even EEB motherboards, a maximum of up to 23 fans from 120 – 140 mm and a total of up to 5 radiators on the dedicated spaces from 120 – 480mm with a max depth of 65mm.





## ERIS EVO

All Hardcore  
Chassis



## INTRODUCTION

Design Art in its best by RAIJINTEK – The All Hardcore Cases – ERIS EVO. The ERIS EVO series case with strengthen structural design is made for the Modder and high end enthusiast in terms of Water Cooling or Air Cooling with the most powerful components on the market, such as Intel i9/i7, AMD AM4/TR4/ Xeon CPU, and especially powerful full – length VGA cards (up to 4 pcs in Quad SLI), the current extreme powerful RTX2080Ti or 5700XT. ERIS EVO case supports from Mini-ITX, DUAL Mini-ITX to Micro ATX, Standard ATX, E-ATX and even EEB workstations motherboards, a maximum of 20 fans from 120 mm, 16 fans from 140mm 6 fans from 200mm and a total of up to three of radiators on the dedicated spaces from 120 – 600mm with a max depth of 65mm, two of 120-360mm with a max depth of 30mm at back, we also offer a dual Mini-ITX support for up to 2 different motherboard system, as well as dual PSU Support you can power up your QUAD SLI VGA's and two system without any issue. Four pass through tunnel for your DIY Soft or Hard Tubes, including the option for hiding all cables in the space between back cover. ERIS EVO also came with dust filter on four sides, aluminum cover for both front and rare, two removable HDD cage to give you better space management and install up to 5\*3.5" HDD's or SSD'S as well as full-length VGA Card's (up to 4 pcs in Quad SLI), even came with a vertical SLI bracket, two dual MINI-ITX VGA bracket, two detachable power supply compartment cover, 10 IO-BOX placement plus tool-free & easy installation it just got better and better. Looking for the super hard cord chassis, ERIS EVO is the one for all hardcore Hardware enthusiasts.

EVOKE YOUR  
PASSION.



## Features

### Maximum Capacity

- 600 Radiator x 2 (65mm thickness)
- 480 Radiator x 1 (65mm thickness)
- 360 Radiator x 2 (30mm thickness)
- Up to Long Graphics Card x 4
- Up to EE-B Mother Board
- Up to 1 x Water Pump
- Up to 20 x 120/140mm Fans
- Up to 6 x 20030mm Fans
- Up to 2 Power Supply Unit

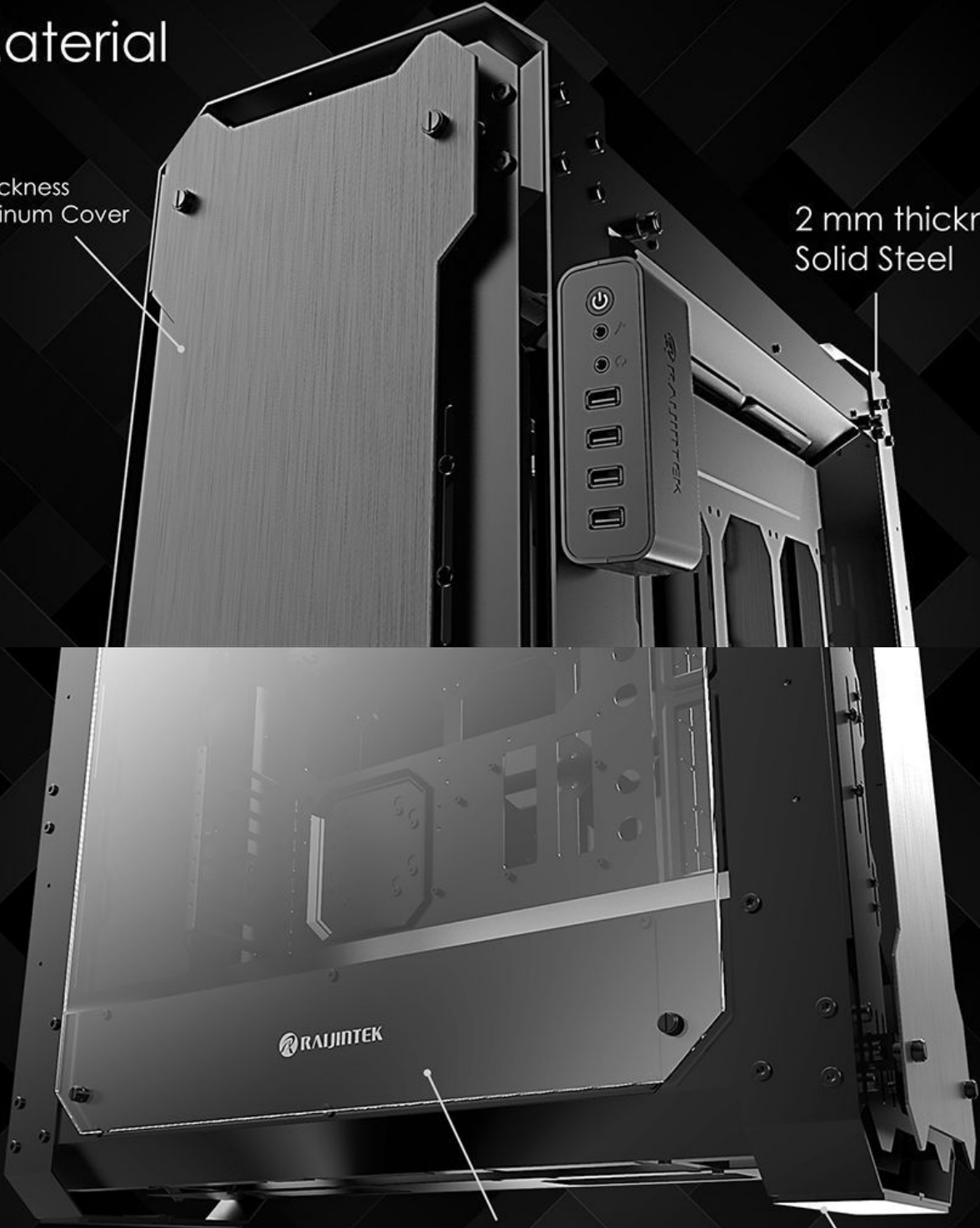




# Material

3 mm thickness  
Full Aluminum Cover

2 mm thickness  
Solid Steel



RAIJINTEK

4mm Tempered Glass

10mm Rubber Pad

# Side Panel



VGA Card

Up to  
512mm

Full-length VGA Card (up to 4 pcs in Quad SLI)



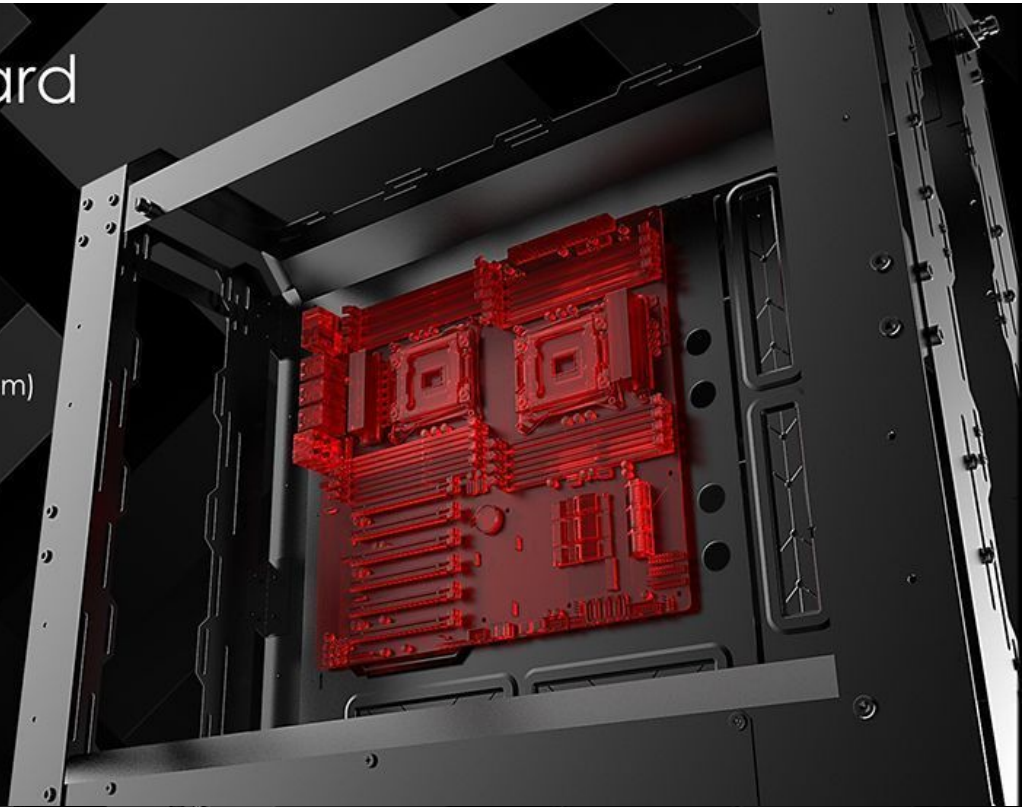
vertical DUAL  
VGA card  
Installation in  
SLI Mode

SLI Bracket

# Mother Board

Support up to EEB

- Mini-ITX X2 (170x170mm)
- Micro-ATX (244x244mm)
- Standard ATX (305x244mm)
- E-ATX (305x330mm)
- EEB (305x330mm)



# DUAL Mini-ITX SYSTEM

Able to achieve two different MINI-ITX motherboard system



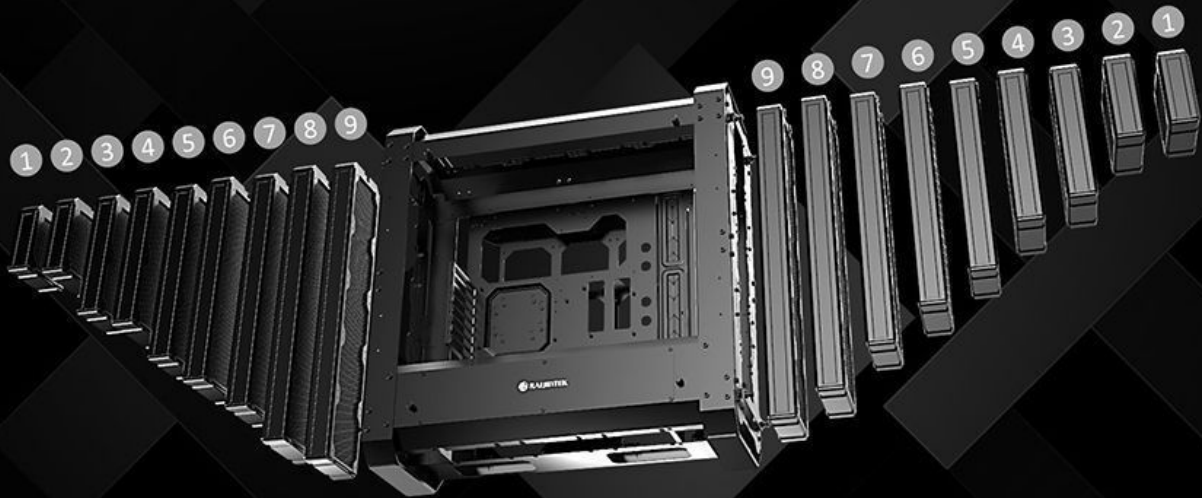


# Radiator - Top

- ① 120 Radiator 65mm thickness
- ② 140 Radiator 65mm thickness
- ③ 240 Radiator 65mm thickness
- ④ 280 Radiator 65mm thickness
- ⑤ 360 Radiator 65mm thickness
- ⑥ 480 Radiator 65mm thickness



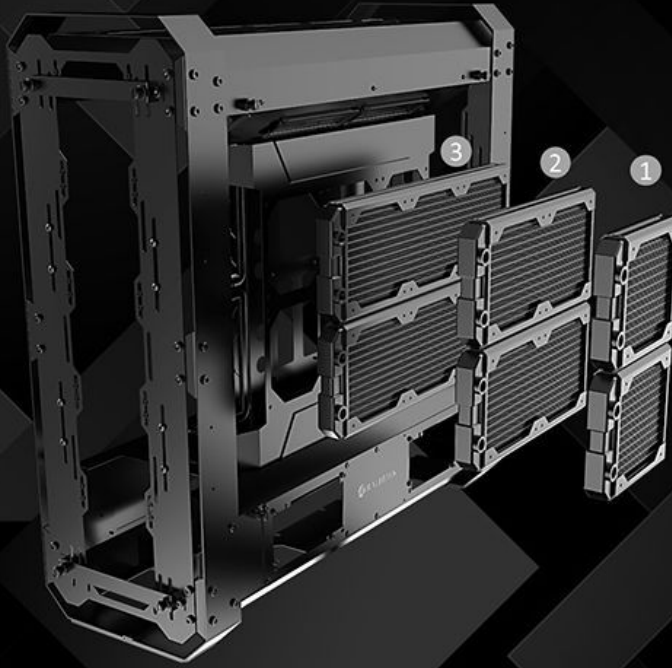
# Radiator – Front & Rear



- |                               |                               |                               |
|-------------------------------|-------------------------------|-------------------------------|
| ① 120 Radiator 65mm thickness | ④ 280 Radiator 65mm thickness | ⑦ 480 Radiator 65mm thickness |
| ② 140 Radiator 65mm thickness | ⑤ 360 Radiator 65mm thickness | ⑧ 560 Radiator 65mm thickness |
| ③ 240 Radiator 65mm thickness | ⑥ 420 Radiator 65mm thickness | ⑨ 600 Radiator 65mm thickness |

# Radiator – Back Plate Section 1

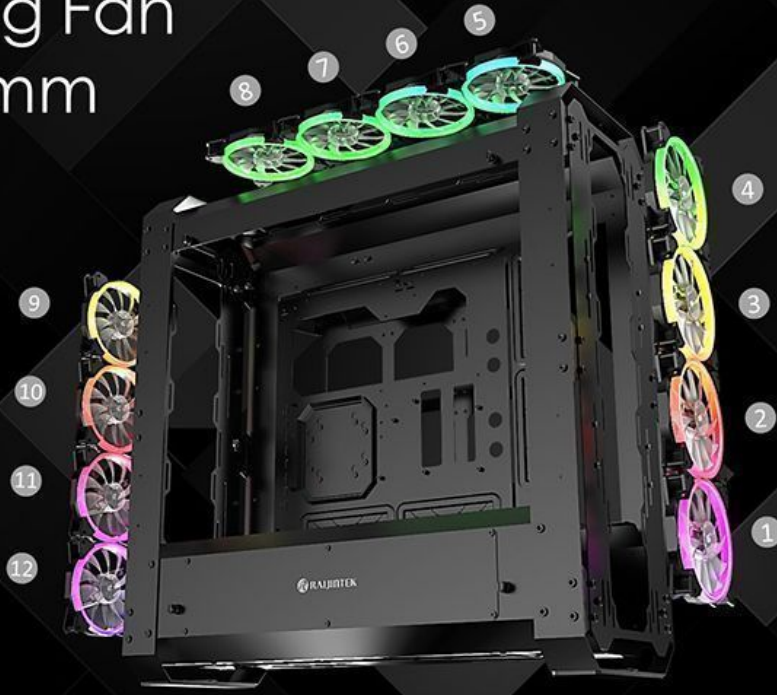
- 1 120 Radiator 30mm thickness
- 2 240 Radiator 30mm thickness
- 3 360 Radiator 30mm thickness



# Cooling Fan 12025mm



# Cooling Fan 14025mm



# Cooling Fan 20030mm





# Cooling Fan - Back Side

120x25mm

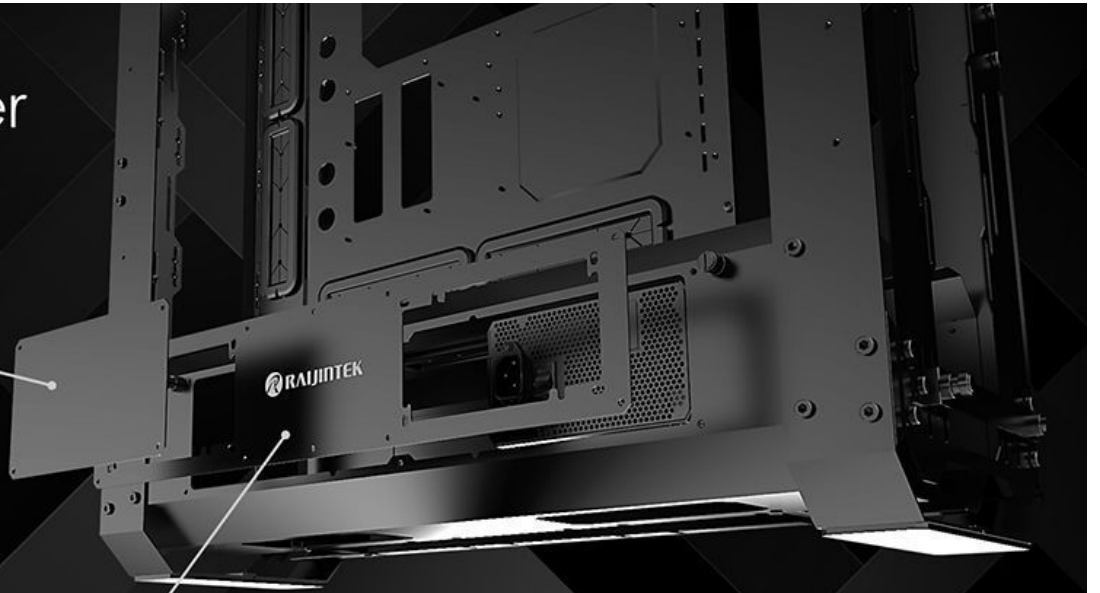


## Dual Power

- PS/2 [Internal Bottom-mount]
- PS/2 [Internal Bottom-mount]

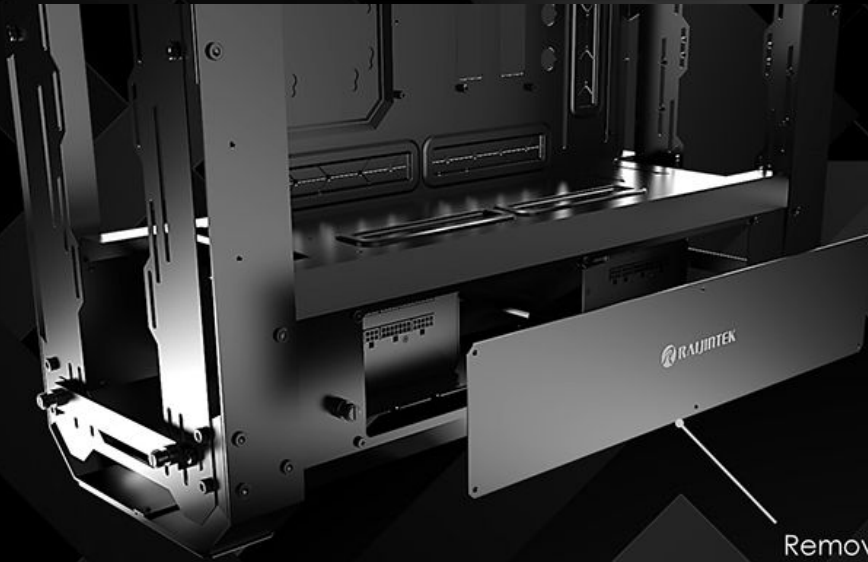
# PSU Cover Plate

Can be covered when not in use

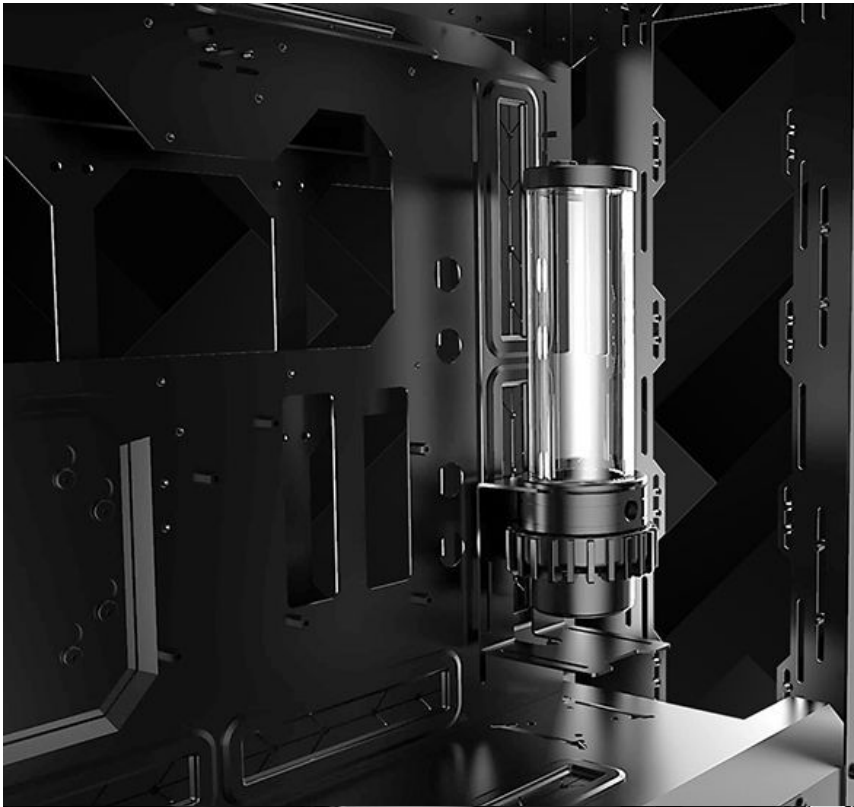


Removable PSU cover for hiding PSU and Cable Management

# PSU Cover Plate



Removable PSU cover for hiding PSU and Cable Management



# | PUMP

With multiple mounting holes give you more options for your choice of DIY accessory it's also compatible with RAIJINTEK-ATLANTIS series D5 level pump



# | Pass-Through tunnel

For Pass-Through fitting X 4





3.5" HDD

3.5" HDD X5



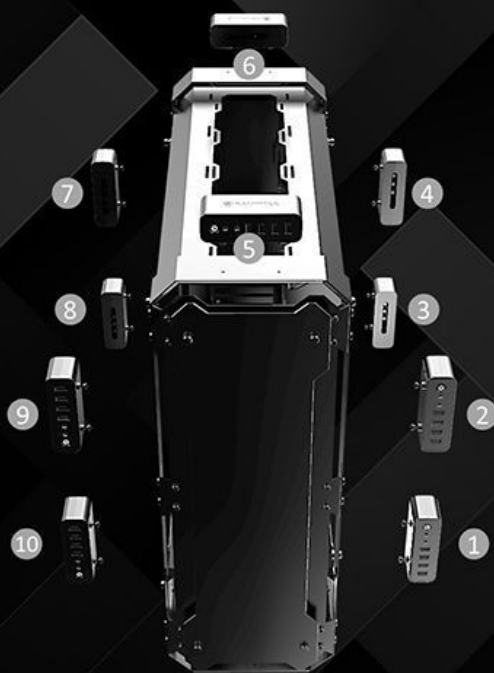
2.5" HDD & SSD

2.5" HDD X5  
SSD



# IO BOX

10 locations to choose the most comfortable location for yourself



## Specifications

---

## SPECIFICATION

Product Name	ERIS EVO
Product Number	OR20B00172
Dimension [W×D×H]	269×722.4×708 mm
Weight	21.8 kg [N.W.] 25.4 kg [G.W.]
Material	Aluminum 3.0mm; SPCC 2.0mm
Color	Coating Black
M/B Support	EEB/E-ATX/ATX/MICRO ATX/Dual MINI-ITX
Drive Bay	Internal 3.5"HDD×5 or 2.5"SSD×5
Expansion Slot	PCI Slots × 8
I/O Panel	USB3.0×4, HD Audio×1
Power Supply	Dual PS/2 [Bottom]
Fan Q'ty	Top: 120/140mm×4 [option] Front: 120mm×5 or 140mm×4 or 200mm×3 [option] Rear: 120mm×5 or 140mm×4 or 200mm×3 [option] Back: 120mm×6 [option]
Radiator Q'ty	Top: 120/140/240/280/360/480mm 65mm thick radiator [option] Front: 120/140/240/280/360/480mm 65mm thick radiator [option] Rear: 120/140/240/280/360/480mm 65mm thick radiator [option] Back: 2×120/140/240/280/360mm 30mm thick radiator [option]
CPU Cooler Height	170mm [Max.]
Graphic Card Length	512mm [Max.]
Side Panel Style	4mm Tempered Glass
Accessories	5 slot vertical PCI-E bracket×1 [for vertical SLI] 2 slot mini-ITX PCI-E bracket×2 [for dual mini system]

## Contents:

- ENYO × 1
- Screw #6-32 L6 × 12  
Motherboard
- Screw #6-32 L6 × 30
- Screw M3 L9.5 × 16  
2.5"HDD
- Screw #6-32 L8.5 × 16  
3.5"HDD
- Stand-off L6.5 × 12  
Motherboard
- Screw M3 L10 × 2  
Fasten I/O module
- Screw M8 L16 × 8  
Side Panel
- Cable Tie × 10  
Settle Cable
- PSU Rubber × 8  
PSU Anti-vibration
- Allen Key × 1  
Install side panel
- Screw L13.6 × 8



- Top/Front panel
- Stand-off L9 × 8
- Top/Front panel
- Rubber Pad × 8
- Top/Front panel
- Installation Guide × 1

## Additional Information

Brand	Raijintek
SKU	RJK-OR20B00119
Weight	71.0000
Color	Black
Chassis Form Factor	Full Tower
Side Panel	Window
Motherboard Support	E-ATX
Material	Aluminum
Special Price	\$314.97

