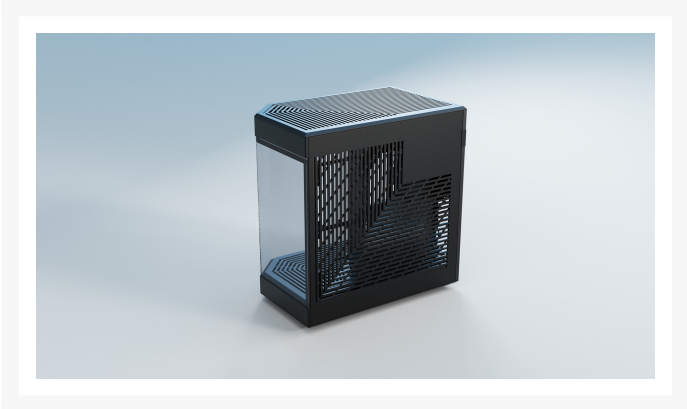




**HYTE** Hyte Y60 Modern  
Aesthetic Case - Black

\$199.95

Product Images





## Short Description

---

The Y60 features a 3-piece panoramic tempered glass design for the ultimate photo and display potential. See your build the way it was meant to be seen from the left or right side of your desk with a simple turn.

## Description

---

The Y60 features a 3-piece panoramic tempered glass design for the ultimate photo and display potential. See your build the way it was meant to be seen from the left or right side of your desk with a simple turn.

## Features

---

### Panoramic Views

No corner pillar. The Y60 features a 3-piece panoramic tempered glass design for the ultimate photo and display potential. See your build the way it was meant to be seen from the left or right side of your desk with a simple turn.

### Exclusively Vertical GPU Mounted

Why would you want to see your graphics card any other way?

### Included PCIE 4.0 Riser Cable

A protective riser cable canopy integrates beautifully into the case, allowing for half-height PCIE cards behind the throne of the vertical graphics card. The protective shroud is the first of its kind, made specifically for the Y60.

### Antechamber Construction

Segment cables from thermal components and turn your PC into a work of art.

### Cold Floor Cooling

Eliminate hot spots with sweeping lateral vents from fans tastefully tucked into the basement of the Y60.

### Included Fans

The three pre-installed Flow FE12 fans with fluid-dynamic bearings provide whisper-quiet operation.

## Tech Specs

Type	Dual Chamber Mid-Tower ATX Case
Volume	60L
Case Dimensions	456mm (L) x 285mm (W) x 462mm (H)
Case Weight	9.6 kg
Case in Box Dimensions	535mm (L) x 372mm (W )x 540mm (H)
Case in Box Weight	11.3 kg
Case Materials	Tempered Glass, Steel, ABS
Color	White/Black, Black/Black, Red/Black
Motherboard Support	EATX, ATX, mATX, ITX
Power Supply	ATX up to 235mm in length
Video Card Max Dimensions	375mm length, 75mm thick (60mm or less recommended for best cooling)
Fan Support	Side: 2x 120/140mm Top: 3x 120mm Rear: 1x 120mm (1x 120mm, 1300 RPM included) Bottom: 2x 120mm/140mm (2x 120mm, 1300 RPM included)
Radiator Support	Side: 120, 140, 240, 280mm up to 150mm thick Top: 120, 240, 360mm up to 30mm thick Rear: 120mm
CPU Cooler Height	160 mm*
Storage	2x 3.5" HDD or 4x 2.5" SSD
Expansion Slots	3 + 6 half-height
PCI Express Riser	4.0 x 16 (included)
INTERFACES	
Front USB 3.0	2
Front USB 3.2 Gen 2 Type-C	1
Audio/Mic Jack	1

Dust Filters Bottom, Side, Top

RGB Lighting None

\* When using an air cooler rather than liquid cooler, HYTE recommends the installation of 2 additional intake fans (not included) on the side mount of the Y60 for optimal airflow.

## Additional Information

---

Brand	Hyte
SKU	CS-HYTE-Y60-BK
Weight	30.0000
Color	Black
Motherboard Support	ATX, E-ATX, Micro ATX, Mini ITX
Material	ABS, Aluminum/Steel

