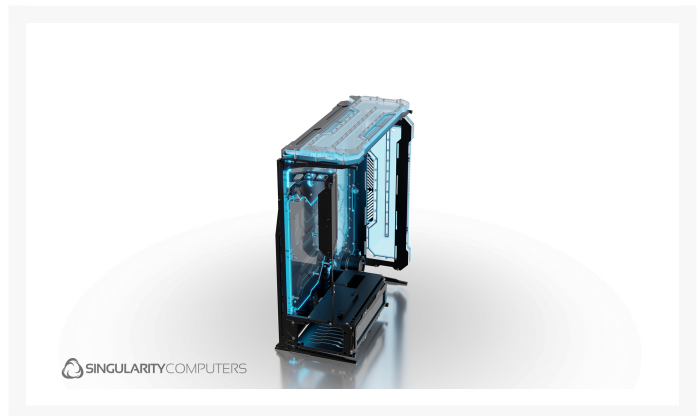
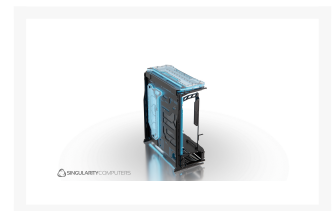
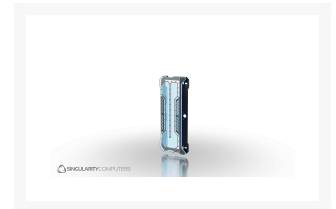


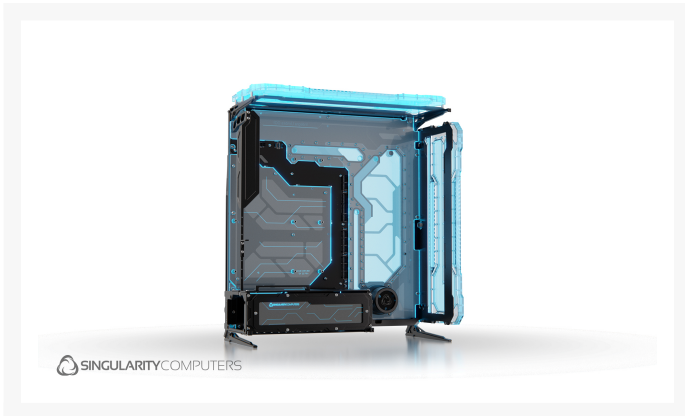


Singularity Computers Spectre 3.0 Integra Elite - Black

\$449.00

Product Images





Short Description

Spectre 3.0 Integra Elite replaces the front and/or top radiator panels with a distribution plate. This enhances the transparent 'Spectral' look of the case, further showing off the coolant and internal components.

Description

Spectre 3.0 Integra Elite replaces the front and/or top radiator panels with a distribution plate. This enhances the transparent 'Spectral' look of the case, further showing off the coolant and internal components. The main purpose is an aesthetic feature although it does include fluid volume. Spectre 3.0 Integra Elite is backwards compatible with all Spectre 3.0 versions but not Spectre 1.0 or 2.0. Spectre 3.0 Integra Elite has an

entirely new design with improved ventilation.

The Spectre 3.0 Elite distribution plate has one inlet and one outlet. When installed on the front panel the ports are at the top and when installed on the top panel the ports are at the back so that they are close to the ports on the distribution plate. Connections can be made to the water-cooling components in the build and the Spectre 3.0 main distribution plate. Radiators can still be attached and there is ventilation around the perimeter of the distribution plate and through the ventilated sections on the front. There is an LED strip position on the edge of the distribution plate and an included ARGB 5V Addressable 50cm LED strip.

Spectre 3.0 Integra Elite is backwards compatible with Spectre 3.0, Spectre 3.0 Penumbra, Spectre 3.0 Antumbra and Spectre 3.0 Arduus all versions.

Specifications

Manufacturing Process: CNC Mill. CNC Router. Laser Cutter.

Materials: 6061 Aluminum Anodized. Cast Acrylic.

Gaskets: Silicone Black.

Fasteners: Stainless Steel Silver.

Ports: x2 G1/4" BSPP. 1x Inlet. 1x Outlet.

Assembly: Assembled by hand.

Testing/Validation: All Distribution Plates are factory pressure tested and precise fastener tension is applied.

Included Items:

Spectre 3.0 Integra Elite Distribution Plate: x1.

Spectre 3.0 ARGB 5V 50cm LED Strip: x1.

Installation:

The Spectre 3.0 Integra Elite Distribution Plate installs the same way as the stock front and top panels. The distribution plate needs to be removed from the radiator mounting panels so that the radiators can be installed. Connections can be made to the water-cooling components in the build, and the Spectre 3.0 main distribution plate in any order provided that the Elite has flow coming in and going out. The radiators can be attached normally and have the same adjustment as the stock Spectre 3.0 front and top panels.

Additional Information

Brand	Singularity Computers
SKU	SC-S3-ELITE-INTEGRA-BK
Weight	4.4000
Color	Black
Reservoir Type	Distribution plate
Reservoir Accessory Type	Manifold

