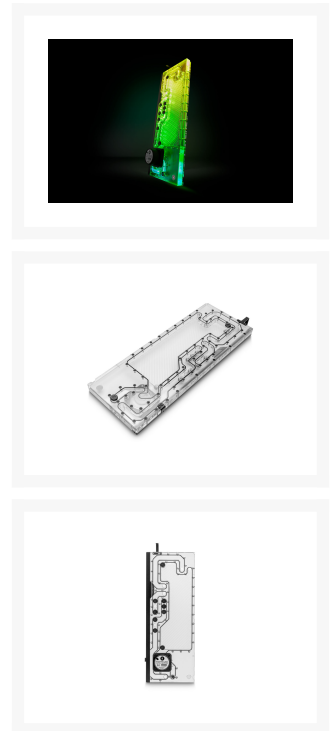
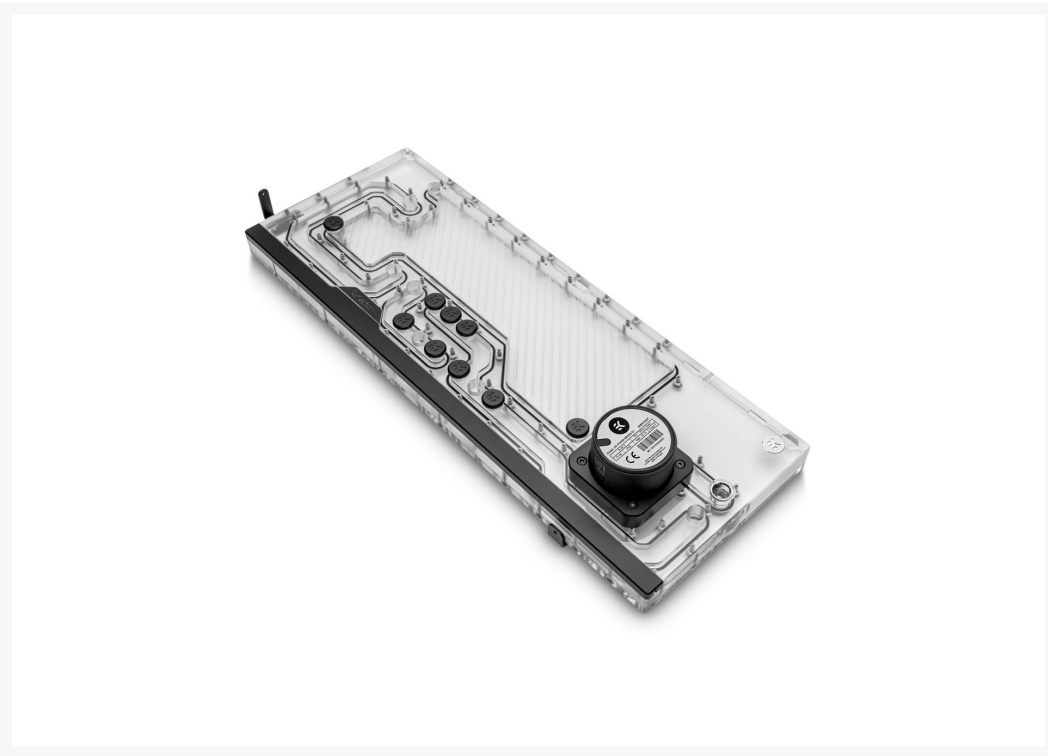


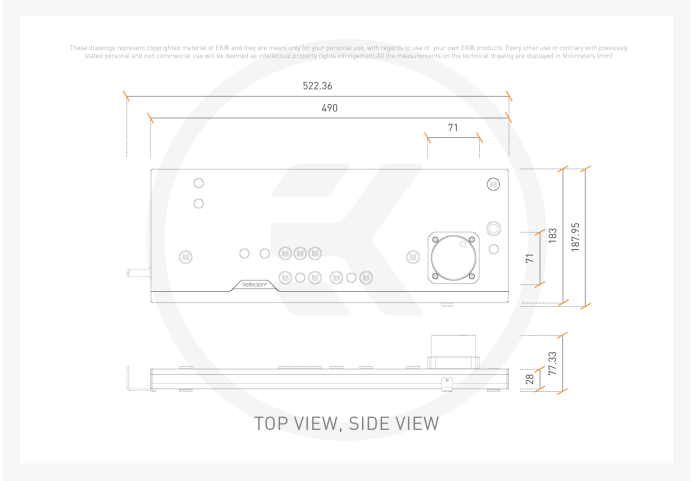
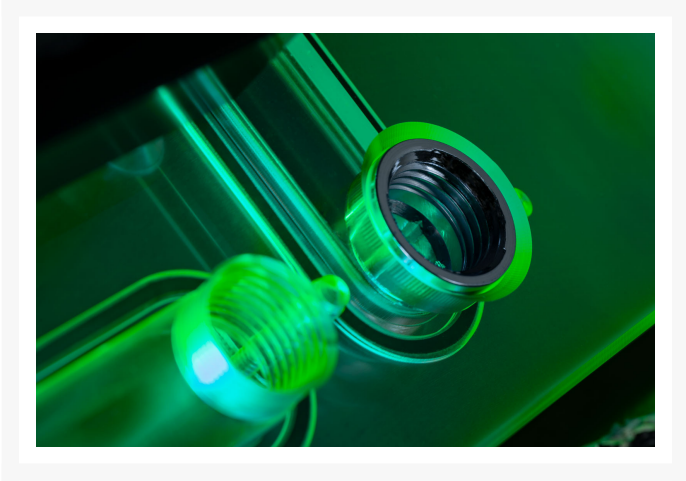
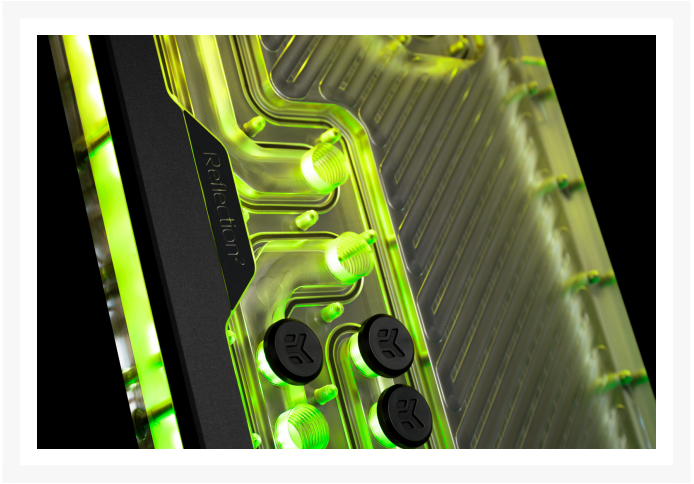
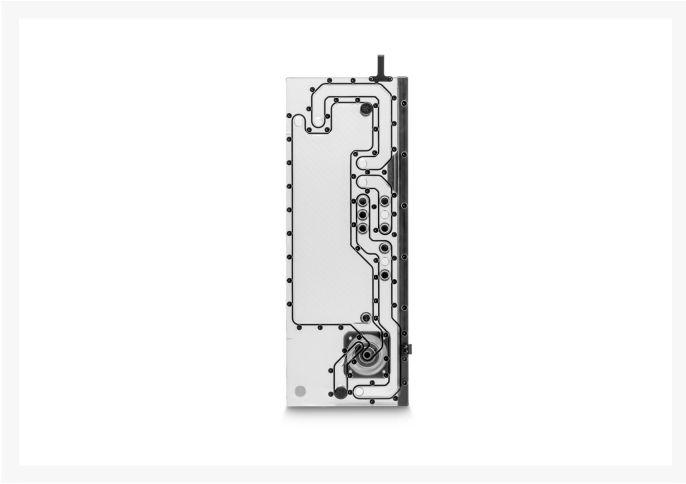


EK-Quantum Reflection² Fractal XL D5 PWM D-RGB - Plexi

\$474.99

Product Images





Short Description

Details

The EK-Quantum Reflection² Fractal XL D5 PWM D-RGB - Plexi is a water cooling reservoir, routing, and pump solution made to fit several Fractal Design cases.

Description

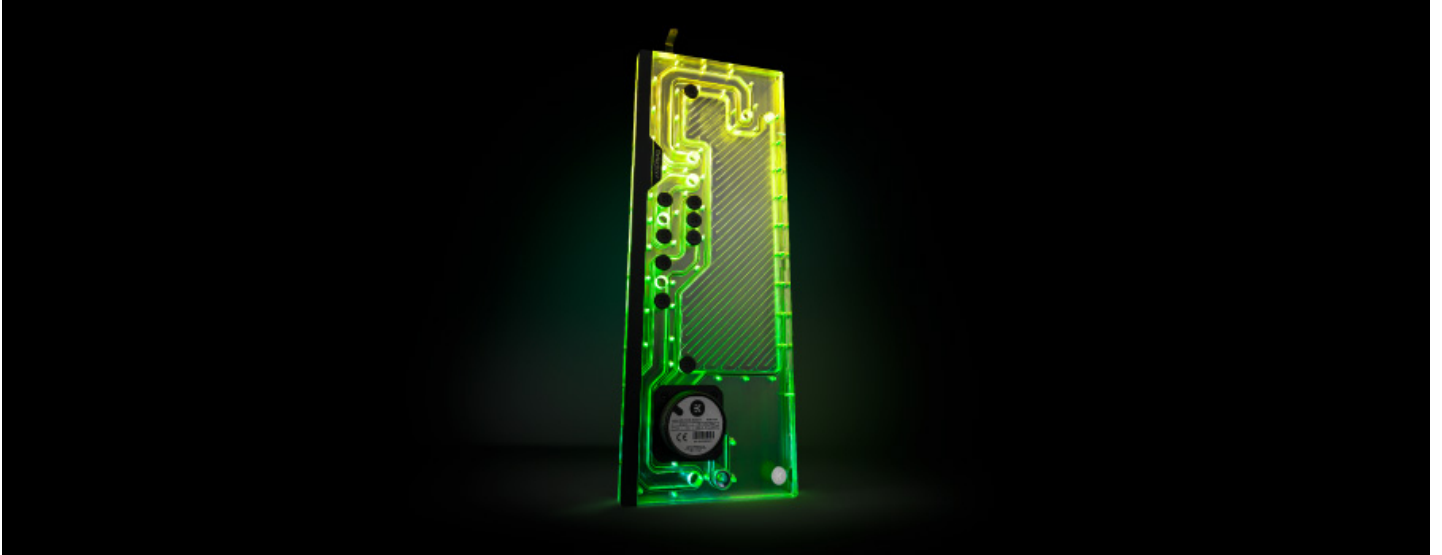
Details

The EK-Quantum Reflection² Fractal XL D5 PWM D-RGB - Plexi is a water cooling reservoir, routing, and pump solution made to fit several Fractal Design cases. This "distro plate" is specifically designed to provide an advanced water cooling solution with a market-leading D5 pump for users who are building custom loop liquid cooling solutions with Fractal Design cases.

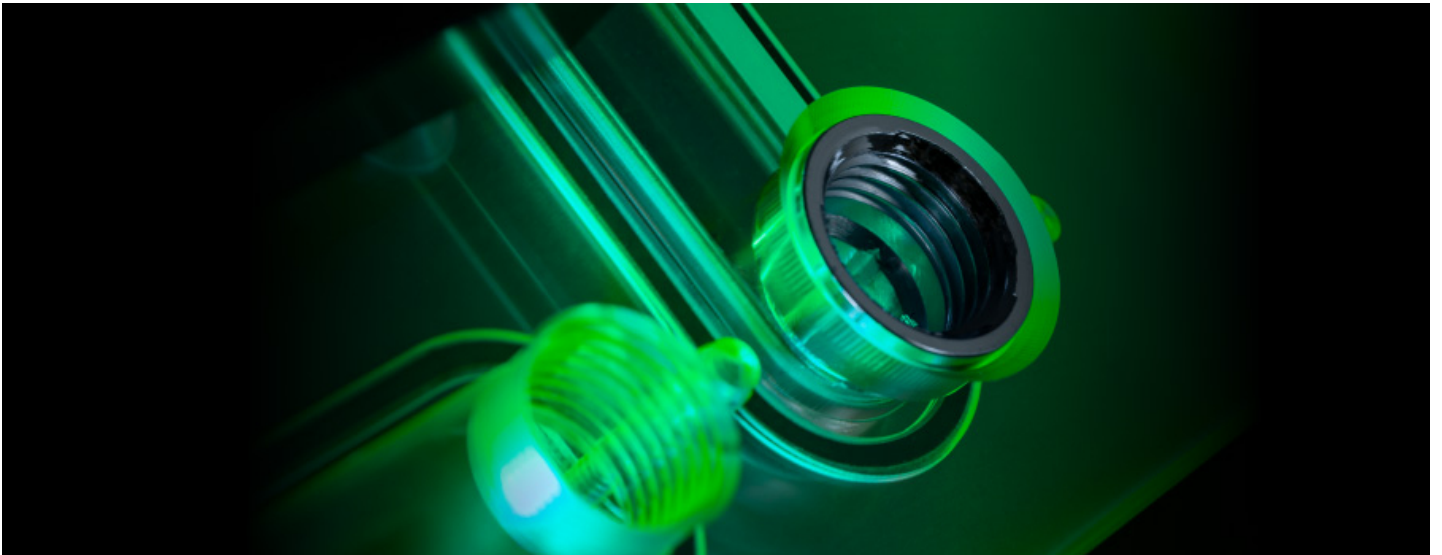
Features

Supported Fractal Design cases:

- Define 7 XL
- Meshify 2 XL



The EK-Quantum Reflection² Fractal XL D5 PWM D-RGB offers multiple industry-standard G1/4" threaded inlets and outlets. The placement of these inlets and outlets is perfectly aligned to fit in line with the PC components in order to minimize the number of bends the user has to make in order to create the loop. A special new push-in port is built-in for the front-mounted EK-Quantum Surface radiator short-run to simplify the assembly.



The radiator compatibility per case is as follows:

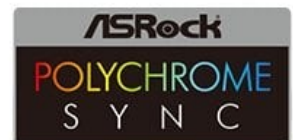
- Front: Up to EK-Quantum Surface X360
- Top: Up to EK-Quantum Surface P480



Engineered to be mounted next to the motherboard, the EK-Quantum Reflection² Fractal XL D5 PWM D-RGB can fit elegantly within the supported Fractal Design cases. The built-in addressable D-RGB LED strip runs down the entire length of the unit while the anodized black aluminum cover hides the unwanted LED hotspots. The installed addressable D-RGB LED strip connects to the motherboard 5V D-RGB (A-RGB) header via an industry-standard connector. It is compatible with all major motherboard vendor software for a coordinated lighting effect.



**MYSTIC
LIGHT**



Specifications

Reservoir:

- Dimensions with the attached pump (W x D x H): 183 x 77 x 490mm
- Reservoir volume: ~557ml
- D-RGB LED count: 27
- D-RGB cable length: 600mm
- D-RGB connector standard 3-pin (+5V, Data, Blocked, Ground)

Technical specifications:

- Motor: Electronically commuted spherical motor
- Rated voltage: 12V DC
- Power consumption: 23W
- Maximum pressure head: 3.9m
- Maximum flow: 1500L/h
- Maximum system temperature: 60°C
- Materials: Stainless steel, PPS-GF40, EPDM O-rings, Aluminium oxide, hard coal
- Power connector: SATA and 4-pin PWM FAN connector

Operational regime:

- PWM duty cycle: ~ 20-100%

- Default behavior: Runs at 100% duty cycle when no PWM feedback signal is present

Enclosed:

- EK-Quantum Reflection² Fractal XL D5 PWM D-RGB – Plexi
- 1x Allen key 2mm
- 1x EK-Loop Multi Allen Key (6mm, 8mm, 9mm)
- 4x Screw M3x8 DIN7984
- 11x MS - Quantum Plug - Ni (preinstalled)
- 11x EK-Quantum Torque Plug Cover - Black (preinstalled)
- 1x EK-Quantum Torque Push-In Adapter F 0 - Nickel (preinstalled)

PLEASE NOTE:

- EK-Matrix7 compatible.
- The Quantum Reflection² distribution plates are designed around Quantum Torque fittings and EK-Quantum Surface radiators.
- The D5 pump is water lubricated, in other words, it uses a wet rotor design. Therefore, it is strongly recommended not to run the pump dry.
- The aluminum oxide mentioned in the materials specification for the D5 pump is not exposed to water and is perfectly safe to run in copper/nickel loops.

Additional Info

	Plexi
	G1/4

Additional Information

Brand	EK Waterblocks
SKU	EK-REFLECT2-FRACT-XL-D5-PWM-DRGB-P
Weight	9.0000
Color	Clear
Reservoir Type	Distribution plate
Pump Type	Laing D5 PWM
Vendor SKU/EAN	3831109897416

