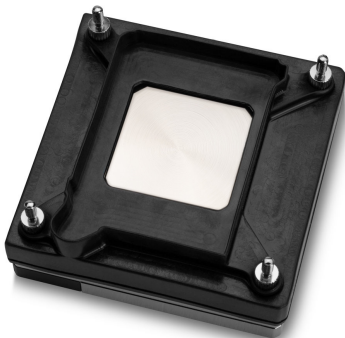
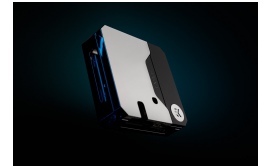


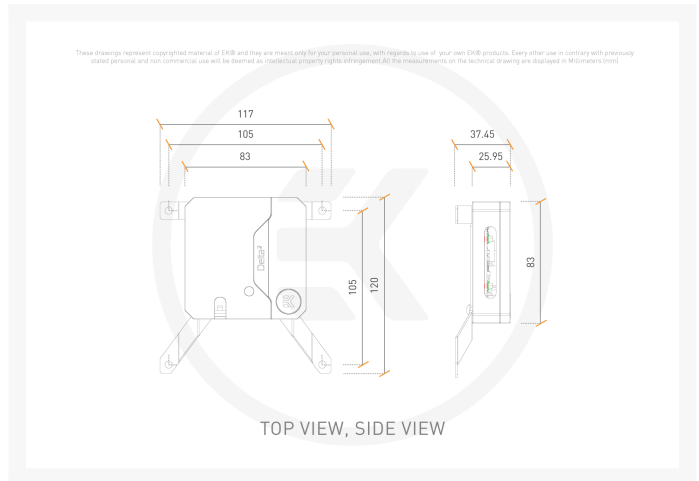
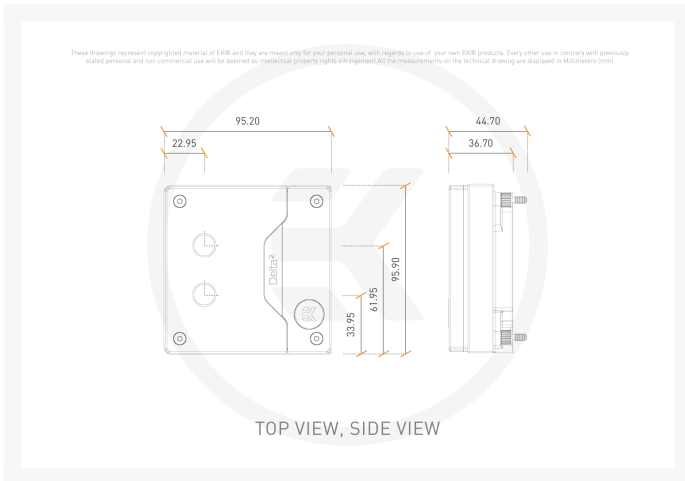
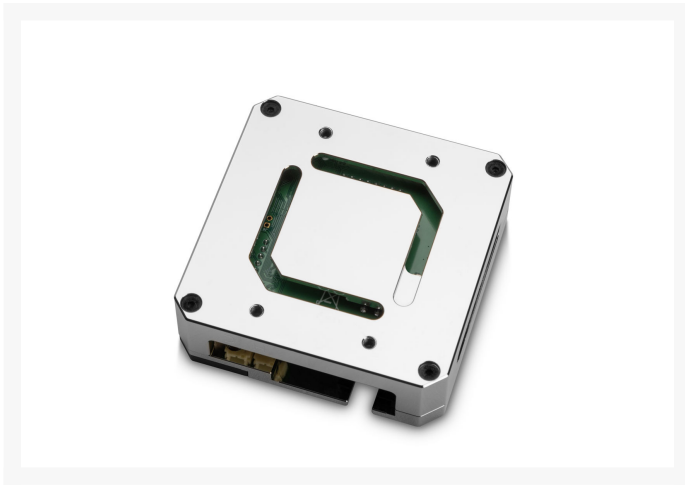


EK-Quantum Delta² TEC D-RGB - Full Nickel

\$579.99

Product Images





Short Description

EK-Quantum Delta² TEC D-RGB - Full Nickel is the latest generation of cryo-cooling water block that is made in collaboration with Intel®. It is a unique cooling solution for enthusiasts who are seeking consistent system performance and ultimate overlocking on unlocked 12th Gen Intel® Core™ desktop processors.

Description

List of currently supported CPUs:

- Intel® Core™ i9-12900K Processor (30M Cache, up to 5.20 GHz)
- Intel® Core™ i9-12900KF Processor (30M Cache, up to 5.20 GHz)
- Intel® Core™ i9-12900KS Processor (30M Cache, up to 5.50 GHz)

Improvements in Delta² TEC Technology

EK-Quantum Delta² TEC D-RGB - Full Nickel brings numerous improvements to the design, 4 cutting-edge Aluminum Nitride (AlN) Ceramic TEC plates soldered to the coldplate. These AlN TEC plates offer significantly higher power efficiency over the previous Aluminum Oxide variants. The main water block is following the EK-

Quantum design language with EK-Matrix7 compatibility. Insulation is also improved, ensuring an even higher level of safety. The water block uses built-in mounting screws already equipped with retention springs. It also has two additional thermal sensors - one on the hot and one on the cold side of the Peltier element - for precise monitoring and control of the TEC plates.

The controller unit also boasts EK-Quantum design language to fit perfectly with the rest of the loop. It is now independent of the main block and comes with an EK 120mm fan-mounting bracket, so you can position it inside your case so as to not impede the visual appearance of the main water block and receive additional cooling. The control unit can now connect and control the pump and fans of the loop used to cool the TEC plate, making it even more user-friendly.

Features

Features

EK-Quantum Delta² TEC D-RGB - Full Nickel CPU water block has four built-in Peltier/Thermoelectric cooler plates. It is powered by Intel® Cryo Cooling Technology, a unique combination of hardware, software, and firmware designed to help unleash elite performance for gamers and overclockers. The water block itself features a robust all-metal design for extreme conditions with a rubber insulation shroud that isolates the water block cold plate from the environment, impeding condensation. A sensor in the controller unit also measures humidity to prevent reaching the dew point.

The cold plate is CNC-machined out of high-purity electrolytic copper, which enables high thermal performance. A large surface area, covered with cooling fins, transfers the heat away from the quad, purpose-made TEC plates.

Built upon a purpose-designed large surface flow-through cooling engine together with Intel Cryo Cooling Technology, bridging aesthetic uniformity and near-silent operations with technological advancements in thermal solutions, the EK-Quantum Delta² TEC D-RGB - Full Nickel is an exceptional application of cooling the CPU with sub-ambient temperatures by utilizing Thermoelectric Cooler (TEC) plates while continuously monitoring and adjusting temperatures dynamically, achieving an ideal operating environment for sustained gaming performance.

How does this EK-Quantum Delta² TEC water block work?

Liquid coolers are unable to reach temperatures below ambient (room) temperature, but the EK-Quantum Delta² TEC D-RGB - Full Nickel is cutting-edge, as it actively cools the CPU to sub-ambient temperatures while extracting and dissipating the heat generated from the four TEC plates through the traditional liquid cooling loop. While the TEC plates cool the CPU, the TEC plates are cooled entirely by your custom liquid loop.

Doesn't sub-ambient cooling cause condensation?

The EK-Quantum Delta² TEC series products utilize an innovative two-pronged approach to mitigate thermal condensation, a byproduct that has plagued previous attempts of sub-ambient cooling. The cooler features a new integrated rubber insulation shroud that isolates all exposed cold surfaces from the environmental conditions inside the PC, while the Intel Cryo Cooling Technology continuously monitors and adapts to those

conditions to minimize condensation risk generated by the cooling process.

Software

Intel Cryo Cooling Technology

Specifications

Warning:



- Given that the CPU is cooled by the EK-Quantum Delta² TEC directly to achieve low temperatures, the rest of your liquid cooling loop will be under stress from the TEC plates. Do not use your CPU temperatures as a baseline for your Fan or Pump speeds! It is best to monitor the coolant temperature or set the fans and pump at a fixed speed level!
- To keep your warranty please use licensed Intel software and follow the manual.
- Delta TEC is not designed for ALL CORE MAX frequency under heavy load, but it's intended for a lighter load like gaming and ONE CORE MAX boost. The TEC is not suitable for benchmarking with software like Prime95 which heavily loads all cores on the CPU.

Technical Specifications:

- Power connector: 8-pin PCI-E
- Connection with PC: internal USB 2.0
- Maximum power draw (unregulated mode): 210W

CPU socket compatibility:

- Intel LGA1700

For motherboard and CPU compatibility please consult "Is my PC compatible" below.

Enclosed:

- EK-Quantum Delta² TEC D-RGB - Full Nickel with rubber hosing
- EK-Quantum Delta² TEC D-RGB - Full Nickel controller unit
- Mounting mechanism (screws, mounting plate, necessary washers, etc)
- Uni bracket 120mm for mounting PCB case on a 120mm fan mounting position inside the case
- EK-Cable 5-Pin Motherboard (F) to Micro-USB (M) 50cm (1pcs)

Made in Slovenia - Europe!

PLEASE NOTE:

- The use of specifically engineered coolants that contain corrosion, scale, and biological inhibitors is mandatory to prevent damage to your nickel-plated water block! EK is offering a selection of such products in the [coolant](#) section.
- This product should NOT be installed with any aluminum EK Fluid Gaming parts!
- The latest BIOS update is required to be able to run the product successfully.
- The water block is compatible only with LGA 1700 Z690 Socket based motherboards.
- Check the compatibility list before purchasing the product.

Additional Info

Full Nickel

G1/4

Intel

Additional Information

Brand	EK Waterblocks
SKU	EK-DELTA2-TEC-FULL
Weight	2.8000
Color	Black
CPU Series	Intel LGA1200
Block CPU Type	Intel
Block Style	Nickel
Vendor SKU/EAN	3831109859612

