



Singularity Computers Wraith 2.0 Volta - Silver

\$599.00

Product Images



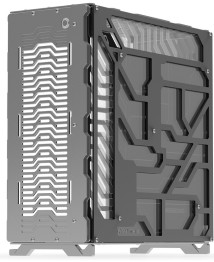
SINGULARITY COMPUTERS



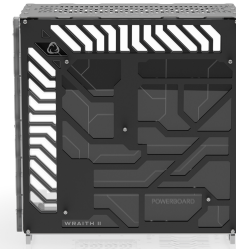
SINGULARITY COMPUTERS



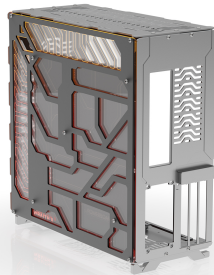
SINGULARITY COMPUTERS



SINGULARITYCOMPUTERS



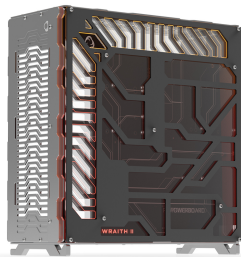
SINGULARITYCOMPUTERS



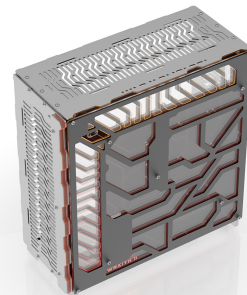
SINGULARITYCOMPUTERS



SINGULARITYCOMPUTERS



SINGULARITYCOMPUTERS



SINGULARITYCOMPUTERS



SINGULARITYCOMPUTERS

Short Description

Singularity Computers Wraith 2.0 Volta is a whole new approach to computer case design. Wraith 2.0 is now

split into two versions, one which has our water-cooling cooling integration and Volta which has PowerBoard Integration.

Description

Singularity Computers Wraith 2.0 Volta is a whole new approach to computer case design. With Spectre we introduced water-cooling system integration in the form of a distribution plate which replaced the entire rear wall of the case, we used similar ideas on Wraith 2.0. With the Singularity Computers PowerBoard we have introduced electronics integration, essentially it is a distribution plate but for cables. Wraith 2.0 is now split into two versions, one which has our water-cooling cooling integration and Volta which has PowerBoard Integration. The PowerBoard on Wraith 2.0 Volta is fully integrated replacing the entire rear wall of the case similar to the distribution plate on Wraith 2.0. Behind it are two acrylic covers, one clear with laser etching and another satin black cover. The PowerBoard integrates the 24pin and 8pin EPS, PWM & ARGB Hubs, direct connect SATA 2.5" and 3.5". It also has integrated ARGB LEDs around the perimeter and under the motherboard, a touch activated power button, power and reset buttons and an on off switch for the ARGB LEDs. The PowerBoard reduces cable clutter meaning there is more space for liquid cooling components and loop building. Volta fits a high-end water-cooled cooled system with 2x 240mm radiators, the largest GPUs, any size SFX-L PSU and pump and reservoir. There are two PSU locations depending on the configuration you prefer, the rear PSU location allows larger pump/reservoir combos to be used and the front PSU position allows more 3.5" drives to be installed.

Features

PowerBoard Integration:

The PowerBoard is a PCB which integrates the 24pin and EPS, PWM and ARGB Hubs, direct connect SATA 2.5" and 3.5", Power and Reset Buttons, ARGB LEDs with an on off switch and a touch activated Power Button. The PowerBoard distributes core component cables and integrates other features and functions. It is a new method for cables allowing standardization of cable lengths and making cable management no longer necessary. Wraith 2.0 Volta comes included with a standard set of black sleeved linking cables including 24pin x1 and 8pin EPS x2, the PCIE cables need to be directly connected from the PSU to the GPU.

Reduced build time due to integration:

The functionality integrated on the Powerboard means that these components don't have to be installed separately. For example, the PWM and ARGB hubs, lighting and the direct connect SATA 2.5" and 3.5". The need for cable management is almost completely removed by the PowerBoard.

Integration Cost Component:

A large portion of the case cost is due to the integration. These are components you do not have to purchase for your build. The Powerboard is a full solution for cables and ARGB and PWM hubs.

Integration & Optimization:

With the integration we did not just develop a case, we also developed all the integrated components. This meant that we could focus more on optimization than would normally be possible.

High End Components:

Despite its small size Wraith 2.0 Volta can fit a high-end liquid cooled build. It can fit a full-sized GPU and SFX-L PSU. It can fit x2 240mm radiators 30mm thick with a single set of fans. There is enough space for a pump and reservoir combo such as the Protium 2.0 ARGB 150 D5 Reservoir Combo. The PowerBoard reduces cable bulk allowing more space for liquid cooling components.

Two PSU Mounting Locations:

There is a PSU mounting location toward the front of the case on the bottom panel and at the back of the case on the rear panel. The main benefit of the front PSU location is you can fit an extra 3.5" HDD, and the benefit of the rear one is that you can fit larger pump/reservoir combos. It depends on your build layout and how you want it to look.

Specifications

PowerBoard Integration:

24pin x1. EPS x2. PWM x4. ARGB x 7. SATA 2.5" x4. SATA 3.5" x2 (removes x2 2.5" when used).

Touch activated Power Button.

Power & Reset Buttons.

LED on/off switch.

x37 ARGB LEDs on front side around perimeter and under motherboard.

Cables:

PowerBoard Linking Cables: 24pin x1. 8pin EPS x1. 18AWG Black Headshrinkless Sleeve.

PWM Female to Female 50cm Black Sleeved x1.

ARGB Female to Female 50cm Black Sleeved x1.

Motherboard Form Factor: Mini-ITX, Mini-DTX

Case Dimensions: 407mm x 407mm x 170mm (including legs)

Package Dimensions: 450mm x 500mm x 120mm

Case Weight: 4kg

Case Packaged Weight: 5kg.

Expansion Slots: x3.

Storage: 2.5" x5 (x2 are 2.5" or 3.5"). 3.5" x3 (2 are 2.5" or 3.5").

PSU Compatibility: SFX, SFX-L. Unlimited Length.

Radiator Top: 240mm x30mm.

Radiator Front: 240mm x30mm.

Maximum GPU Length: 300mm.
Maximum GPU Thickness: 3 slots.
Maximum GPU Width: Unlimited.
Maximum CPU Cooler Height: 130mm.
Front Panel I/O: Vandal Switch 16mm.
Vertical GPU Mount: Included Singularity Computers PCIE 4.0 Bracket and Riser Cable.
Materials: 6061 Anodized Aluminum, Cast Acrylic, Stainless Steel.
Manufacturing Process: CNC Router, CNC Mill, CNC Lathe.

Weight 5 kg

Dimensions 450 × 500 × 120 mm

Additional Information

Brand	Singularity Computers
SKU	SC-WTH-VOLTA-SL
Weight	18.0000
Color	Silver
Chassis Form Factor	Mini-Tower
Side Panel	Window
Motherboard Support	Mini DTX, Mini ITX
Material	Acrylic, Aluminum, Stainless Steel
PSU Wattage	No PSU
Vendor SKU/EAN	9351182003701

