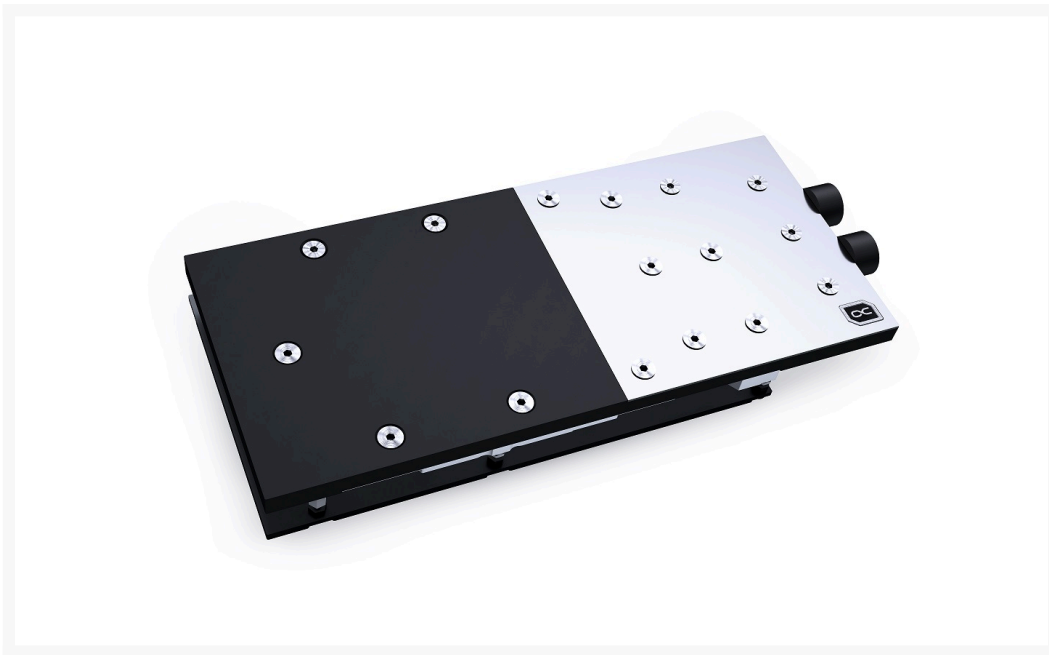




Alphacool Eisblock ES Acetal GPX-N Quadro RTX A6000 with Backplate

Special Price
\$92.45 was
~~\$154.95~~

Product Images



Short Description

The Alphacool Eisblock ES Acetal GPX-N Quadro RTX A6000 was specially developed for the Alphacool Enterprise series. The full-cover cooler with aluminium backplate cools the GPU and all important components such as voltage converters and the graphics memory directly with water.

Description

The Alphacool Eisblock ES Acetal GPX-N Quadro RTX A600 was specially developed for the Alphacool Enterprise series. The full-cover cooler with aluminium backplate cools the GPU and all important components such as voltage converters and the graphics memory directly with water.

Features

Connections to the rear?

Server cases offer different dimensions than normal PC cases. To save space in width and height, the connections were moved to the back. Another advantage is that it is easier to connect the tubing of a complete server rack with this kind of positioning of the connections. This means that even quick-release fasteners with G1/4" external thread can be screwed directly to the graphics card as already offered by Alphacool.

More performance!

During the development of the Eisblock ES Acetal GPX-N Quadro RTX A600 graphics card waterblock, we naturally placed great emphasis on increasing performance. For the first step, the cooler was brought closer to the individual components by reducing the thermal pads to a thickness of 1 mm. Next, the nickel-plated copper block was also made thinner. Instead of 7 mm, it is now only 5.5 mm thick. The water flow within the cooler was also optimized. All important components such as the voltage converters and the RAM are now cooled much better and more effectively by water. All this provides a significant increase in cooling performance.

Copper or aluminum?

Alphacool, of course, only uses copper in its water coolers. In the Eisblock ES Acetal GPX-N Quadro RTX A600 the copper is nickel-plated. However, compared to the previous models, Alphacool has improved the type of nickel plating once again. This has significantly increased the acid resistance and is intended to prevent nickel plating from flaking off. Why does Alphacool use copper instead of aluminum? Copper simply has almost twice the thermal conductivity of aluminum and is therefore clearly the better material for water cooling.

Specifications

Technical data cooler

L x W x H 232 x 97,35 x 19 mm

Material cooler Nickle-plated copper

Material cooler top acetal, brass

Threads 2 x G1/4"

Thickness cooling fins 0,6 mm

Technical data backplate

L x W x H 177,07 x 97,35 x 6 mm

Material aluminium

Color Black

Compatibility list:

- PNY RTX A6000, 48GB GDDR6, 4x DP (VCNRTXA6000-PB / VCNRTXA6000-BSP)

Note on application

Please use only in conjunction with clear transparent water cooling fluids. The particles and additives in Pastel liquids can clog and permanently damage water cooling products such as radiators, pumps, coolers and hoses. This can result in voiding the manufacturer's warranty as well.

Additional Information

Brand	Alphacool
SKU	AC-10668-D
Weight	3.5000
Color	RGB
Vga	NVIDIA RTX™ A6000
Block GPU Type	Nvidia
Block Style	Copper-Plexi
Vendor SKU/EAN	4250197106689
Special Price	\$92.45

