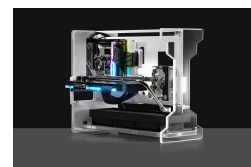
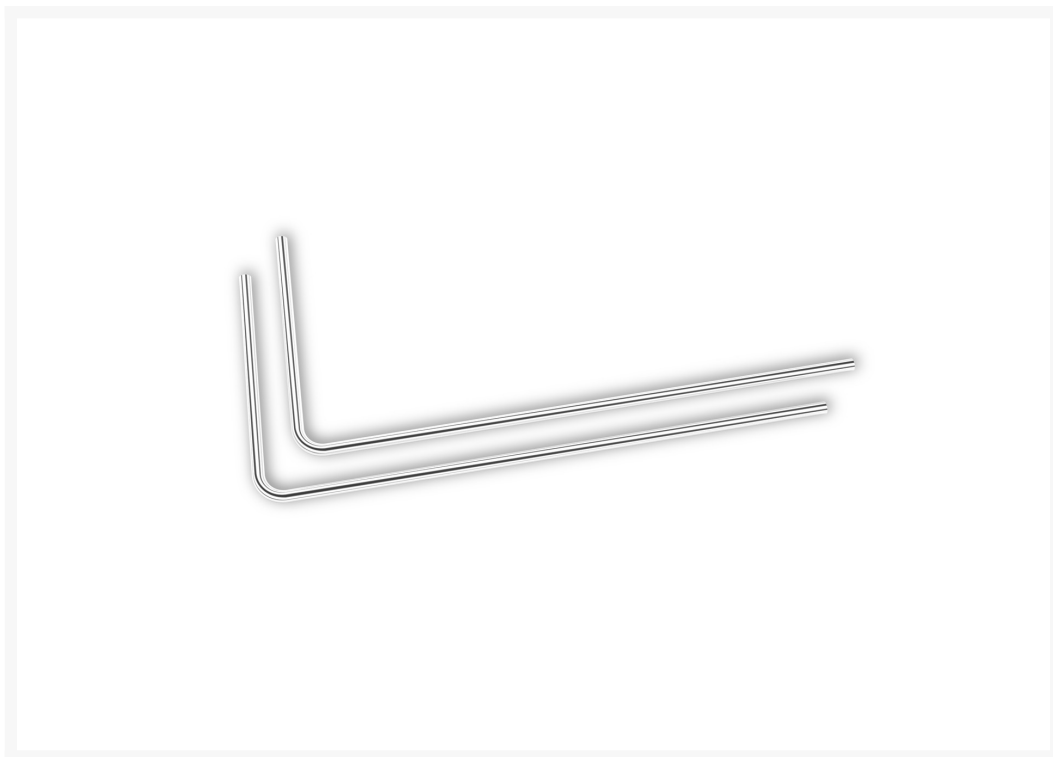




EK-Loop Metal Tube 12mm 0.8m Pre-Bent 90° - Nickel (2pcs)

\$54.99

Product Images



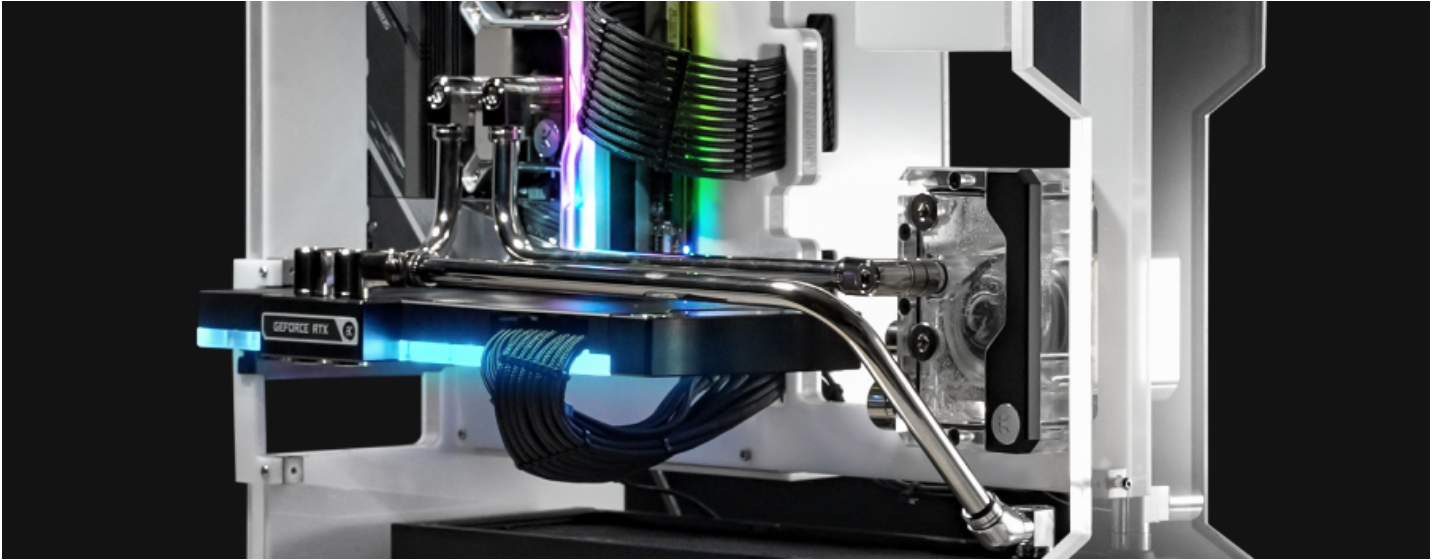
Short Description

EK-Loop Metal Tube 12mm 0.8m Pre-Bent 90° - Nickel (2pcs)

Description

Details

EK-Loop Metal Tube 12mm 0.8m Pre-Bent 90° - Nickel (2pcs) is a pack of two 0.8-meter-long metal tubes with an outer diameter (OD) of 12mm and a 90-degree bend from the factory. These pre-bent brass tubes come with 90-degree bends, which is the most often used bend angle in PC water cooling. These brass tubes are perfect for builds utilizing straight runs from the components to an EK-Quantum Reflection distribution plate.



Features

The metal tube can be cut to size using a [tube-cutting tool](#). Bending metal tubes is not easy, so EK offers these pre-bent tubes with a 90-degree bend.



These brass tubes are only compatible with hard tubing fittings. EK recommends EK-Quantum Torque HDC series fittings. These tubes come in packs of two tubes 800mm long.

Made of brass treated with nickel plating.

Specifications

Technical Specification:

- Material: brass
- Finish: Nickel
- Diameter: 12mm
- Total length: 800mm
- Lenght per axis: 550x250mm
- Compatible fittings: EK-Quantum Torque HDC 12

Additional Info

	Nickel
--	--------

Additional Information

Brand	EK Waterblocks
SKU	EK-LOOP-METAL-12MM-0.8MM-90-2PCS-NK
Weight	2.0000
Color	Nickel
Tube Type	Brass
Tube Size	12mm
Material	Brass
Vendor SKU/EAN	3831109891735

