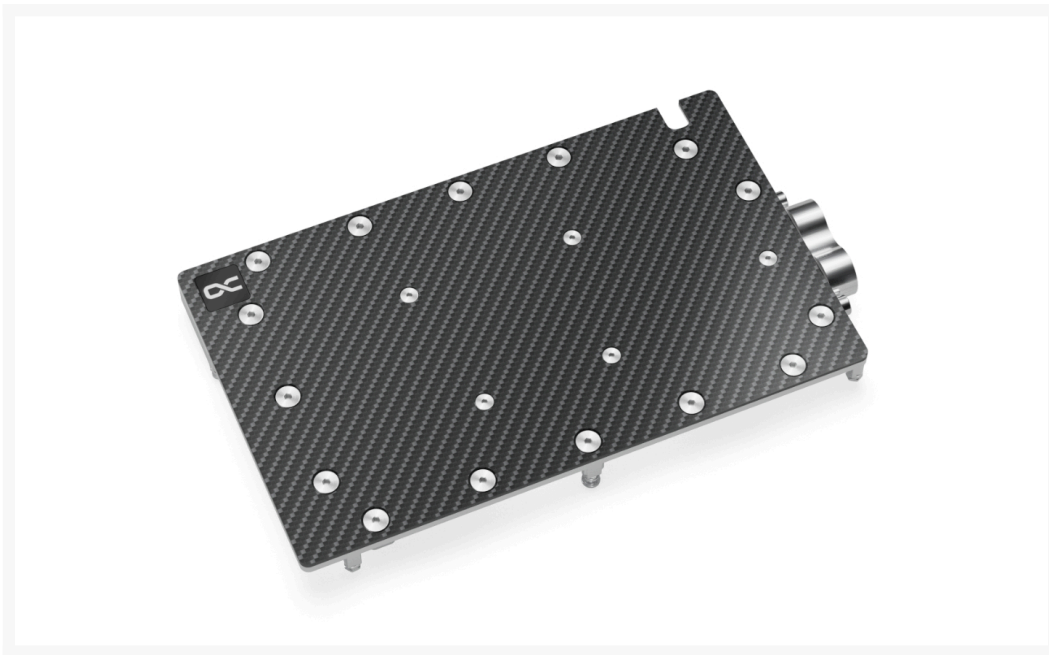




Alphacool ES Geforce RTX 4090 Reference Design with Backplate

\$174.99

Product Images



Short Description

The Alphacool ES GPX Copper/Carbon water cooler with backplate was developed for the Alphacool Enterprise Series.

Description

Product Information

The Alphacool ES GPX Copper/Carbon water cooler with backplate was developed for the Alphacool Enterprise Series. Due to the positioning of the connections, the hosing of the cooler in the server rack is significantly simplified. The top of the cooler is made of carbon. This makes the water cooler lighter compared to Alphacool's Eisblocks with acetal or acrylic tops. Thanks to the compact design, only 1 slot is needed to mount the cooler in the server rack instead of 1.5 slots as before. This additional space saving is one more argument for using the ES GPX Copper/Carbon graphics card water cooler.

Features

More performance!

Alphacool manages to position the cooler as close as possible to the components to be cooled. For this purpose, the heat conducting pads used are reduced to a thickness of 1mm. The maximum possible reduction in the thickness of the copper block and the optimization of the water flow inside the cooler allow all important components such as GPU, voltage converters and VRAMs to be cooled by water much better and more effectively. All of this provides a significant increase in cooling performance.

Chrome-plated copper

The cooler is made entirely of chrome-plated copper. A chrome plating is much harder than a nickel plating and therefore less sensitive to acids, scratches and damage. It completely eliminates the risk of chipping nickel plating. Additionally, chrome plating looks much more homogeneous and provides a shine that cannot be achieved by nickel plating. Chrome-plated coolers have previously only been used in the industrial sector in areas where extreme influences act on the coolers.

Connections on the back?

In order to save space in the width and height during installation, the water input and output have been moved to the back of the cooling block. This positioning of the connections makes hosing much easier. It enables easy integration of the GPU cooler into the water circuit even in the tightest server housings.

Copper or aluminum?

Alphacool uses only copper for all water-bearing parts. Copper has almost twice the thermal conductivity of aluminum and is therefore clearly the better choice of material for water cooling. The chrome-plated copper base is highly resistant to acid, which means that chipping of the chrome plating can be ruled out.

Thermal paste & thermal pads

The included thermal paste is Alphacool's Subzero with a thermal conductivity of 16 W/mk. The electrically non-conductive thermal paste is particularly well suited for high contact pressures, but can still be perfectly applied due to its viscosity of 850000 TF. For the thermal pads, Alphacool uses soft pads that fit perfectly to the components to be cooled and are very durable. The 2mm and 3mm thick pads have a thermal conductivity of 3 W/mk. The 1mm thick pads can dissipate 7 W/mk of heat.

Discreet appearance

The matte carbon finish gives the cooler a noble appearance. This makes it additionally interesting for private users who want to do without aRGB lighting.

Specifications

Compatibility:

- Nvidia Geforce RTX 4090 Reference Design
- INNO3D GeForce RTX 4090 X3 OC, 24GB GDDR6X, HDMI, 3x DP (N40903-246XX-18332989)
- INNO3D GeForce RTX 4090 iCHILL X3, 24GB GDDR6X, HDMI, 3x DP (C40903-246XX-1833VA47)
- INNO3D GeForce RTX 4090 iCHILL Frostbite, 24GB GDDR6X, HDMI, 3x DP (C4090-246XX-1833FB)
- INNO3D GeForce RTX 4090 iCHILL Black, 24GB GDDR6X, HDMI, 3x DP (C4090-246XX-18330005)

Technical data cooler	
L x W x H	209 x 120 x 24mm
Weight	980g
Material cooler	Chome-plated copper
Material cooler top	carbon
Threads	2 x G1/4"
Maximum working temperature	60 °C
Pressure tested	0,8 Bar

Technical details

Manufacturer:	Alphacool
Cooling plate material:	Copper
Cooler model:	Complete cooler
Hint:	Compatible till 16/13mm straight, Compatible till 9/13mm angled
Hardware manufacturer:	NVIDIA
SLI compatibel:	Ja
Connector:	2x G1/4"
Top cover material:	Carbon
Hardware model:	RTX 4090
Dimensions:	209 x 120 x 24mm

Technical data backplate	
L x W x H	199 x 120 x 6mm
Weight	190g
Material	aluminium
Color	black

Additional Information

Brand	Alphacool
SKU	AC-13395
Weight	3.5000
Color	Black
Vga	Nvidia Geforce RTX 4090 Reference Design
Block GPU Type	Nvidia
Block Style	Copper
Vendor SKU/EAN	4250197133951

