



Lian-Li UNI SL120 V2 Addressable RGB Black 120mm Fan (Single)

\$29.95

Product Images



Short Description

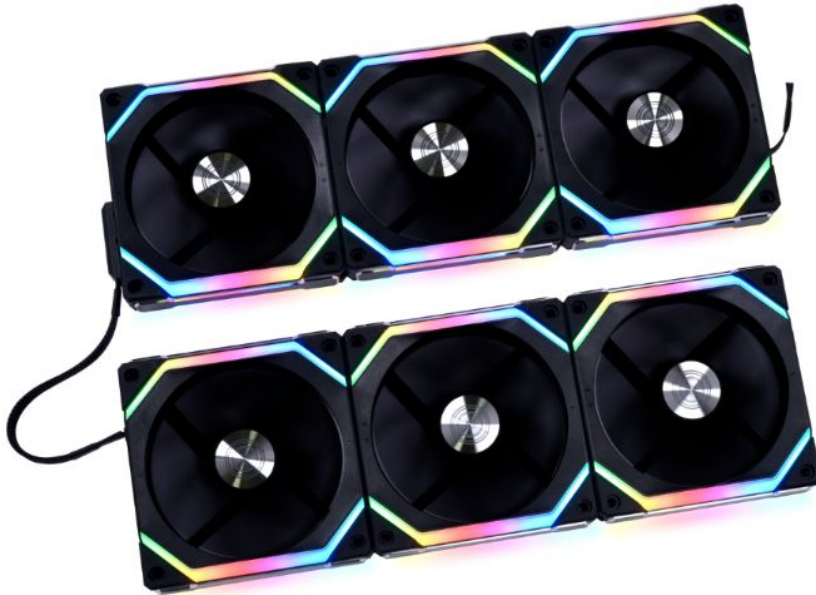
Lian Li has refined their remarkable fans with the UNI fan SL120 V2. Utilising the innovative interlocking capabilities you'll be able to connect and control up to four fans simultaneously through a Lian Li fan controller. Additionally, two clusters of three fans can be daisy chained together for improved cable management.

Description

Lian Li has refined their remarkable fans with the UNI fan SL120 V2. Utilising the innovative interlocking capabilities you'll be able to connect and control up to four fans simultaneously through a Lian Li fan controller. Additionally, two clusters of three fans can be daisy chained together for improved cable management. Alongside its unique interlocking design, the UNI fan SL120 V2 also boasts a 10% improvement on performance to the V1 thanks to a 28mm frame. Furthermore, with Lian Li's L-Connect 3 software, you can take control of all aspects of your fan's functions including their amazing RGB capabilities.

UPGRADED MODULARITY

UNI FAN SL V2 revised its interlocking style to connect up to 6 fans in two clusters to a single controller port, making cable management simpler.



Extension Cable

With the new 18 cm extension cable, the ability to bridge two clusters of fans to create a 3+3 daisy-chained cluster is offered. These 6 fans can then be connected to a single port on the SL V2 UNI HUB controller. The new daisy-chaining solution reduces the number of cables needing to be managed at the back of the case and enables new lighting effects which can be continuous between the two bridged clusters.



Note:

Each port can support up to 6 fans while the maximum number of fans supported by the controller is 16.

Plug-in Power Cable Module

The cable module is designed to plug in and sit flush with the fan frame, which doesn't require extra space for the module and reduces clearance issues with radiator fittings.



UNI FAN SL120 V2



UNI FAN SL120 V1

IMPROVED PERFORMANCE

Thanks to a slight increase to a 28mm thick frame, the SL120 V2 features a 10% airflow optimization compared to the SL120 V1, which creates a great balance of airflow and static pressure.

AIRFLOW
64.5 CFM

STATIC PRESSURE
2.59 mmH2O

NOISE
29.2 dBA

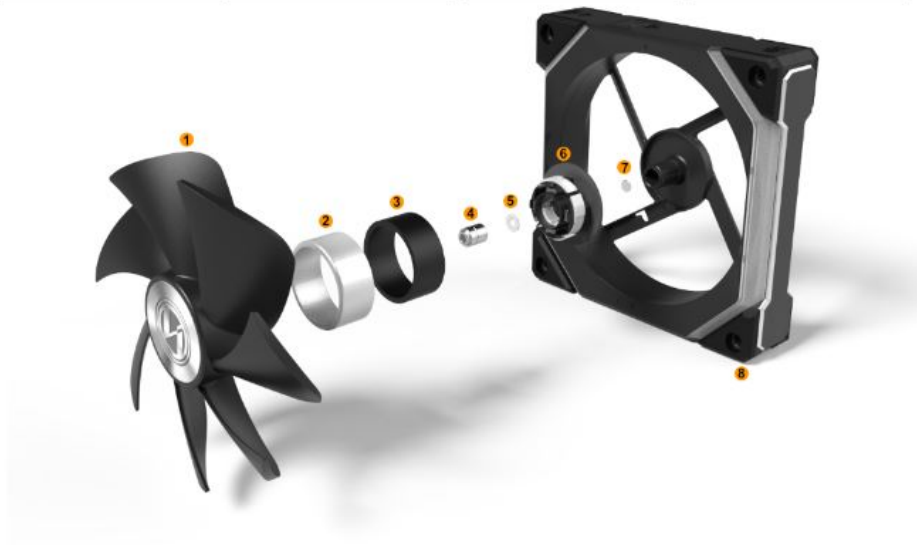
SPEED
0, 250-2000
RPM

Removable Key

The interlocking keys on each fan are removable to improve compatibility with radiator fittings.



1.	2.	3.	4.
Thicker Impeller Increased thickness to 28mm for better efficiency	Magnetic Frame To provide extra support for fan blades	Magnetic Rubber Ring To ensure extreme stability	Fluid Dynamic Bearing (FDB) To effectively reduce the internal friction for improved durability

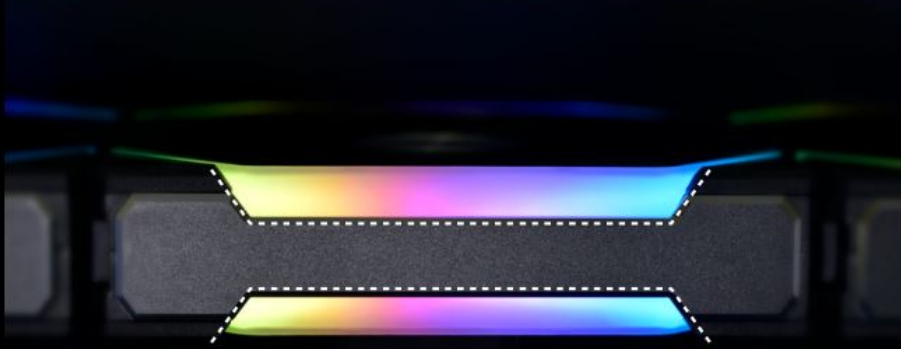


5.	6.	7.	8.
Circlip To secure the fan blades in place	Stator To provide a rotating magnetic field that generates momentum	Extra Magnetic Force To support the fan blades and reduce vibration levels, thus ensuring a low noise level while in operation	Rubber Pads To reduce vibrations and ensure extremely low noise levels

MORE SLEEK LIGHTING DESIGN

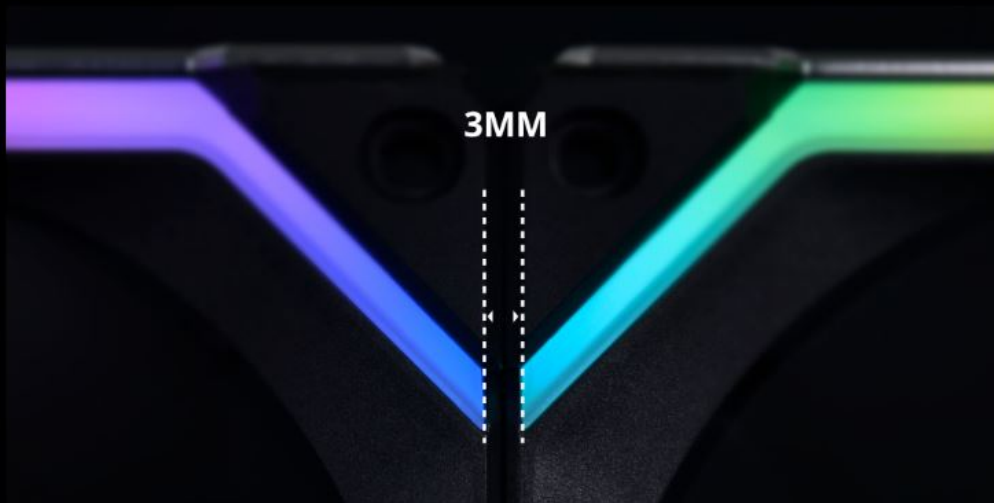
Detail Oriented

The cut edge of the rubber pads is designed to create a smoother curve along the light diffuser.



Continuous LED Channel

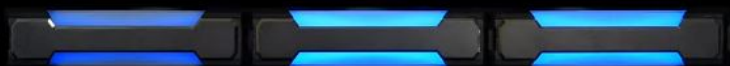
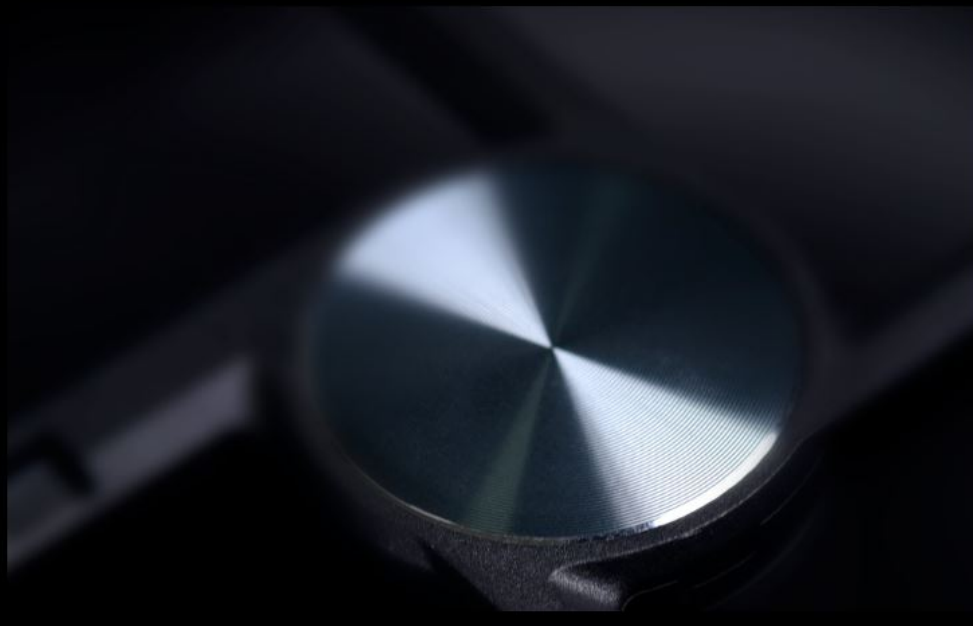
The light gap between the two fans when interlocked together has been reduced from 5.6mm to 3mm, sketching out the elegant lighting effects.



Dazzling at All Angles

Dazzling at All Angles

The center of the rear fan has been decorated with an aluminum medallion for an aesthetic look in any orientation.



Groove

Merging Lighting Effects

A merge function is available to allow lighting effects to flow not only across a single cluster but across the whole system.



Mixing

SIMPLE CONNECTION WITH CONTROLLER

The all-new cable module and UNI HUB controller simplifies cable management and provides efficient power to the fans.

16 Fans in One Go

The included controller in the triple pack can support up to 16 fans and 2 SM-type connected devices.



1.	2.	3.	4.	5.
SM Type Port Compatible with the Galahad AIO pump ARGB cable...etc. Each port supports a 5W maximum output. SYNC 4 port syncs to the lighting effect of port 4 and SYNC 2 port syncs to the lighting effect of port 2.	Fan Group ARGB + PWM Signal Supports clusters of up to 6 fans	2xSATA Cable Total maximum input of 29W Main-SATA: Plug in all circumstances Sub-SATA: Plug when connecting more than 12 fans or often set to white static color.	USB Cable Plug to motherboard 9 pin USB header	5V ARGB / 4 PIN PWM Cable Required for motherboard sync function.

Note:

Please lower the brightness of static white when connecting more than 9 SL V2 fans synchronized to the motherboard. Failing to do so may cause inaccurate colors.

Only One Cable

Combining both the power cable and the lighting cable into a single one, the cable module uses a 7-pin connector to connect to the controller, efficiently reducing the number of cables cluttering the PC build.



Direct To Motherboard

The single pack includes a cable module that features a 4-PIN PWM and a 3-PIN SM-type ARGB cable (3P to 3P 5V ARGB cable is included) to connect directly to the motherboard.



SPECIFICATIONS

PRODUCT NAME	UNI FAN SL V2 120				UNI FAN SL V2 140	
MODEL	SL120V2-3B	SL120V2-3W	SL120V2-1B	SL120V2-1W	SL140V2-3W	SL140V2-1W
COLOR	Black	White	Black	White	Black	White
NUMBER OF FANS	3	3	1	1	1	1
CONTROLLER	Yes		No		No	
CONNECTOR TYPE	4 × 7-PIN (Power Cable) 2 × Extension Cable		1 × 4-PIN PWM + 3-PIN SM Type 1 × ARGB MB Adaptor		1 × 4-PIN PWM + 3-PIN SM Type 1 × ARGB MB Adaptor	
MATERIAL	PBT/PC/Aluminum					
RATED VOLTAGE	DC 12V (FAN) & 5V (LED)					
FAN DIMENSION	120 X 120 X 28 (mm)				140 X 140 X 25 (mm)	
FAN SPEED	0, 250~2000 RPM				0, 250~1600 RPM	
MAX. AIR PRESSURE	2.59 mmH2O (Maximum)				2.09 mmH2O (Maximum)	
MAX. AIRFLOW	64.5 CFM (Maximum)				77.6 CFM (Maximum)	
ACOUSTIC NOISE	29.2 dB(A) Max				29 dB(A) Max	
LOCKED CURRENT	0 (Automatic Protection)					
BEARING TYPE	Fluid Dynamic Bearing (FDB)					
OPERATE VOLTAGE	DC12V & 5V					
START-UP VOLTAGE	≤5V					
INPUT CURRENT	0.17A				0.11A	
INPUT POWER	2.04W				1.32W	
WARRANTY	2 years					

PACKAGE CONTENT



SL120V2 Triple Pack Black



SL120V2 Triple Pack White



SL120V2 Single Pack Black



SL120V2 Single Pack White



SL140V2 Single Pack Black



SL140V2 Single Pack White

Additional Information

Brand	Lian-Li
SKU	UF-SL120V2-1B-D
Weight	3.0000
Color	Black
Fan Dimensions	120mm
Fan Width	28mm
Fan Connection	4-Pin PWM
Fan Voltage	12 VDC
Fan RPM	2000
Fan CFM	64
Fan Noise (dB)	31
LED Color	RGB

