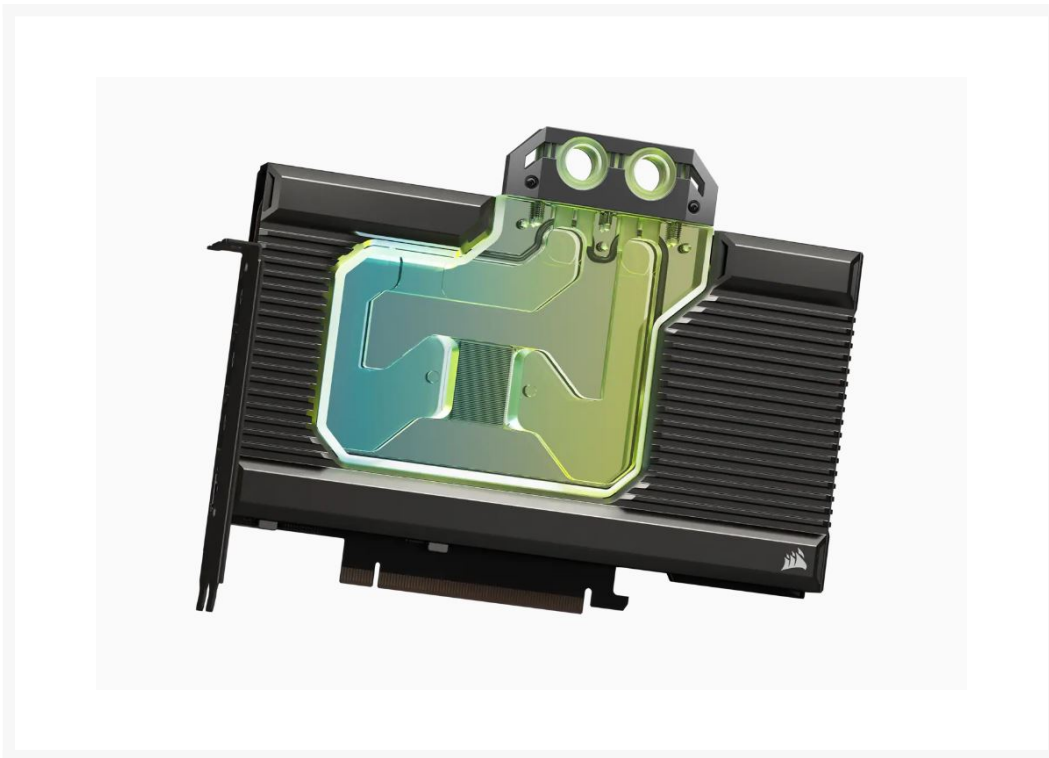


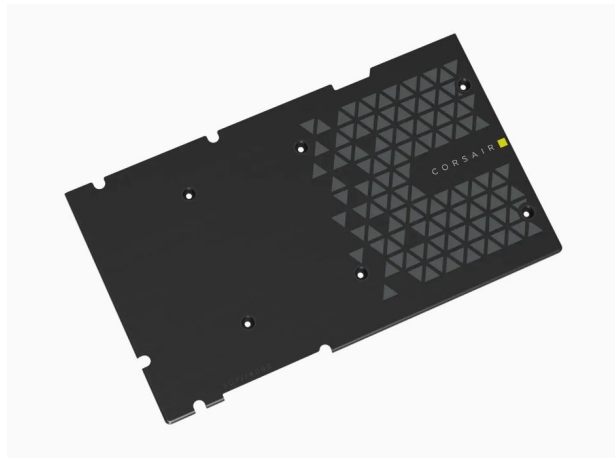


 **Hydro X Series XG7 RGB
40-SERIES GPU Water Block
(4090 FE)**

\$219.95

Product Images





Short Description

The CORSAIR Hydro X Series XG7 RGB 4090 FE GPU Water Block is a total conversion solution for your NVIDIA® GeForce RTX™ 4090 graphics card.

Description

The CORSAIR Hydro X Series XG7 RGB 4090 FE GPU Water Block is a total conversion solution for your NVIDIA® GeForce RTX™ 4090 graphics card.

Features

HEIGHTEN YOUR SYSTEM'S STYLE

Total Conversion GPU water block for your NVIDIA® GeForce RTX™ 4090 graphics card will stand out as a key component of your new water-cooled PC.

FULLY TRANSPARENT FLOW PATH

An acrylic top plate and transparent flow path puts your coolant and RGB lighting on display.

More than 50 high-density cooling fins positioned over the GPU maximize heat transfer and surface area for lower temperatures.

TOTAL CONVERSION DESIGN

Total conversion design cools not just the GPU, but your graphics card's memory and VRM as well.

The full-length aluminum backplate completely covers your graphics card's PCB and protects sensitive components from dust and particles.

IT CAN'T GET ANY EASIER

Pre-applied thermal material and thermal pads make installation quick and easy, with no cutting or spreading required.

Combine with a CORSAIR iCUE controller* and iCUE software for customization and synchronization of RGB lighting across all your CORSAIR RGB products.

*CORSAIR iCUE controller sold separately, alternatively the included ARGB adapter cable can be used for direct control via the motherboard.

Specifications

SLIMMER AND COOLER

Designed to replace your NVIDIA 4090 stock cooler and significantly reduce the size of your new graphics card with a 40% reduction in length, and 60% reduction in thickness.

Product Type:

GPU Water Block

Warranty:

3 Year

Port Thread:

G1/4" BSPP

Thermal Paste:

Pre-applied thermal paste and pads

Cold Plate Fins:

50+

Cold Plate Material:

Nickel-Plated Copper

Fluid Chamber Material:

PMMA

Operating Temperature:

60°C coolant temperature

Color:

BLACK

Lighting:

RGB

Compatibility - Material:

Only mix with other copper / brass products

iCUE Compatibility:

CORSAIR Commander PRO / Commander Core XT / Lighting Node PRO

GPU Compatibility:

NVIDIA GeForce RTX 4090 FE

Additional Information

Brand	Corsair
SKU	CX-9020019-WW
Weight	3.5000
Color	Black
Vga	Nvidia Founders Edition RTX 4090
Block GPU Type	Nvidia
Block Style	Nickel-Plexi

