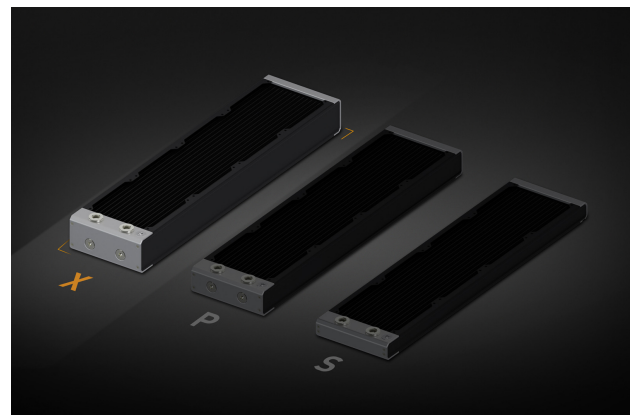
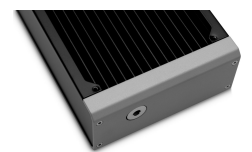
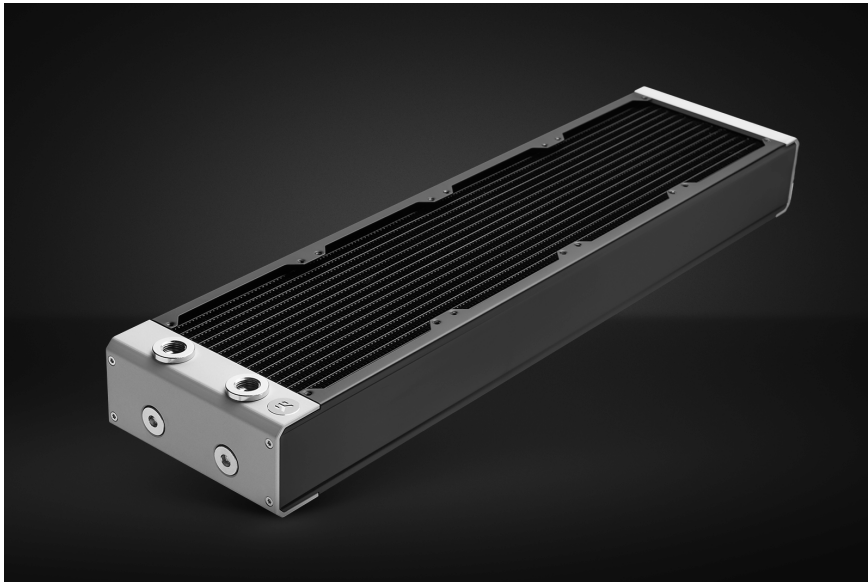


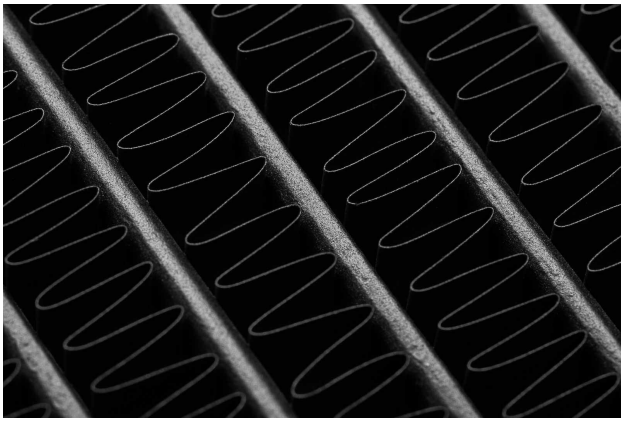


# EK-Quantum Surface X480M - Black

\$194.99

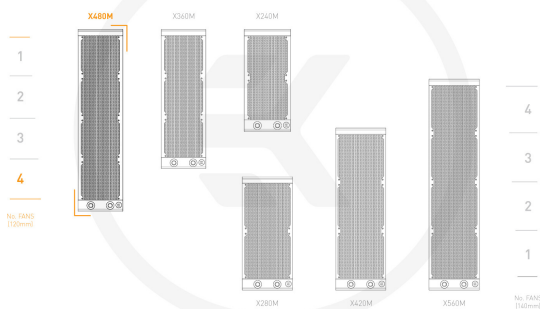
## Product Images



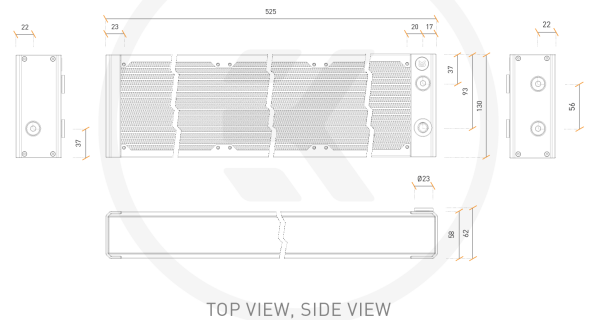


These drawings represent copyrighted material of EK® and they are meant only for your personal use, with regards to use of your own EK® products. Every other use in contrary with previously stated personal and non commercial use will be deemed as intellectual property rights infringement. All the measurements on the technical drawing are displayed in Millimeters (mm)

#### All variants of EK-Quantum Surface X Series



These drawings represent copyrighted material of EK® and they are meant only for your personal use, with regards to use of your own EK® products. Every other use in contrary with previously stated personal and non commercial use will be deemed as intellectual property rights infringement. All the measurements on the technical drawing are displayed in Millimeters (mm)



## Short Description

For those who demand the most cooling power out of an EK-Quantum Surface radiator, the 58mm-thick X Series is the right choice. These thick radiators will benefit the most from medium and high-speed fans or even a Push/Pull setup.

## Description

## Details

For those who demand the most cooling power out of an EK-Quantum Surface radiator, the 58mm-thick X Series is the right choice. These thick radiators will benefit the most from medium and high-speed fans or even a Push/Pull setup. Equipped with a total of four G1/4" threaded connection ports, the X Series provides additional versatility during the loop planning process. The fifth G1/4" port located on the end-tank is an irreplaceable feature when it comes to draining the loop and air bleeding. A total of sixteen 2mm wide copper tubes across the entire radiator ensure optimal coolant flow, putting no stress on your cooling loop. High-grade non-louvered copper fins with 18 FPI density provide the best balance between thermal transfer and air resistance. EK doesn't recommend using slow-running fans on X Series EK-Quantum Surface radiators

as they require adequate airflow to remove more heat than they absorb in their thick core.

EK-Quantum Surface premium radiators are built upon years of development and market research to deliver the best product that the market demands in every possible way. The finish of the materials, mechanical rigidity, and performance have all been brought to another level. Like all other Quantum Line products, EK's brand new Surface radiators bring numerous performance improvements, including thermal performance, coolant flow restriction, and airflow restriction.

With the supplied screws, this radiator is compatible with 120mm fans that have a standard 25mm thickness. EK recommends using EK fans or similar ones with sealed-edge frames. This classic yet effective square shape of the fan casing provides optimal performance in either the pull (suction) or push (pressure) regime without any hydraulic losses, thus ensuring the optimal cooling capacity of your liquid cooling radiators.

Thick, extruded aluminum end caps with a contrasting silver finish give the radiator a premium look and feel. They cover the internals and join the stamp-pressed side plates, creating a rigid structure that is pleasant to handle. The stainless-steel side plates are coated with durable semi-gloss black paint, while the fins themselves have a special black matte coating with a high thermal conductivity coefficient.

## Features

---

### Multiport – The Choice of Ports is Yours

Set into the aluminum accent end caps are modular plugs and extenders that can be interchanged and configured by the user for optimal tube routing. This multiport radiator has two additional G1/4" threaded connection ports on the side and one extra port on the opposing end for air bleeding.

### M4 Screws – Standardized, Easy to Find

Hard-wearing black M4 Philips round-headed screws are supplied for ease of use. In general use case scenarios, EK strongly suggests using only the included screws to avoid damage to the radiator itself. However, M4 screw compatibility allows the users to source longer screws if necessary. The cooling core is designed to cause no detrimental damage to the structural integrity of the radiator core even if the customer uses longer screws accidentally, as they will collide only with the fins.

### Easy Disassembly – DIY Modding Dream

The EK-Quantum Surface range was designed and executed as a modular product range rather than individually sized radiators. Such a design achieves immaculate fitment and continuity in appearance while at the same time making the disassembly process very easy and straightforward. Catering to the DIY modding community is something EK has always been supporting, so painting and modifying your Surface radiator will be a breeze.

### Loop Friendly – Don't Worry About Your Pump

The internal structure design of the radiators was executed with low flow restriction in mind, providing no unnecessary stress on the rest of the cooling loop. This means you will be able to add multiple radiators to your cooling loop using only a single pump (D5 or DDC). The radiators are also airflow-friendly and low-restriction, allowing lower fan speed operation to achieve the same performance. Low airflow restriction keeps the case well ventilated and allows other radiators in the case to breathe properly.

# EK-Matrix7 Compatible – For the Cleanest Tube Runs

Since any custom liquid-cooling loop is built from multiple EK products, the most valuable distinction in aesthetics and ease of use comes from the sum of all the parts. To address this, EK initiated Matrix7, a system that standardizes products' dimensions, as well as port position and spacing. In so doing, we are making the liquid cooling loop assembly more intuitive and having a clean set of parallel tubing runs easier than ever before.

All EK-Quantum Surface radiators are EK-Matrix7 compatible, which means they effortlessly integrate with Reflection<sup>2</sup>, the second generation of Quantum distro plates. This enables the user to easily swap and upgrade between S, P, and X series Surface radiators within the same case (provided the case supports thicker radiators in the same position).

## Specifications

---

### Technical and Material Specifications:

- High-grade 99.9% copper fins
- Copper H90 tubing
- Brass H62 end tank chambers
- Stainless Steel side plates
- Extruded Aluminum Silver anodized end piece covers
- Brass nickel-plated extenders and plugs

Dimensions: 525 x 130 x 58mm (L x W x H)

Weight: 2.57kg

FPI: 18

Port threads: 5x G1/4"

Fan compatibility: 120x120x25mm fan

Pressure tested: 1bar

### Enclosed:

- EK-Quantum Surface P series radiator
- 16x Phillips Slotted M4x30mm for 25mm thick fans
- 16x Phillips Slotted M4x5mm for mounting the radiator directly to the case
- 6mm steel Allen (Hex) key
- 9mm steel Allen (Hex) key

Designed and Engineered in Slovenia

Made in China

### PLEASE NOTE:

- Use of the improperly long screws may result in piercing of the radiator core and irreparably damage the product. Such misuse is not covered by the product warranty!
- This product should NOT be installed with any aluminum parts!

## Additional Info

	G1/4
	4
	120mm

## Additional Information

---

Brand	EK Waterblocks
SKU	EK-QTM-SURF-X480M-BK
Weight	4.6000
Color	Black
Radiator Size	480 (4 x 120mm)
Radiator Thickness	58mm
Vendor SKU/EAN	3831109838778

