

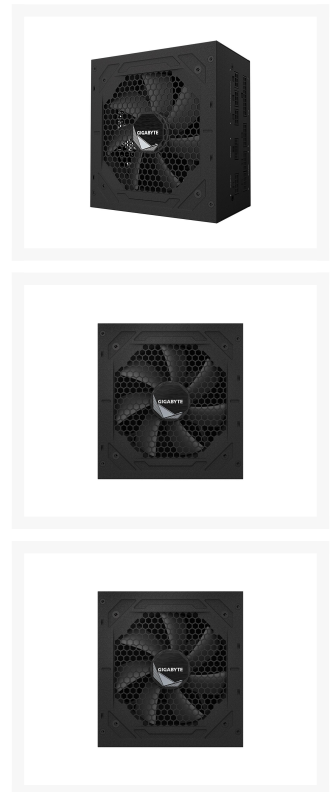


Gigabyte UD1000GM PG5

- Power supply (internal) -
ATX12V - 80 PLUS Gold - AC
100-240 V - 1000 Watt -
active PFC

\$236.99

Product Images







Short Description

GIGABYTE UD Series Power Supplies introduce a variety of high-quality materials and top-notch design.

Description

Ultra Durable and built to last

GIGABYTE UD Series Power Supplies introduce a variety of high-quality materials and top-notch design. Enjoy unrivaled performance with Japanese capacitors, and a +12V Single Rail which will provide exceptional power output and stability for your system.

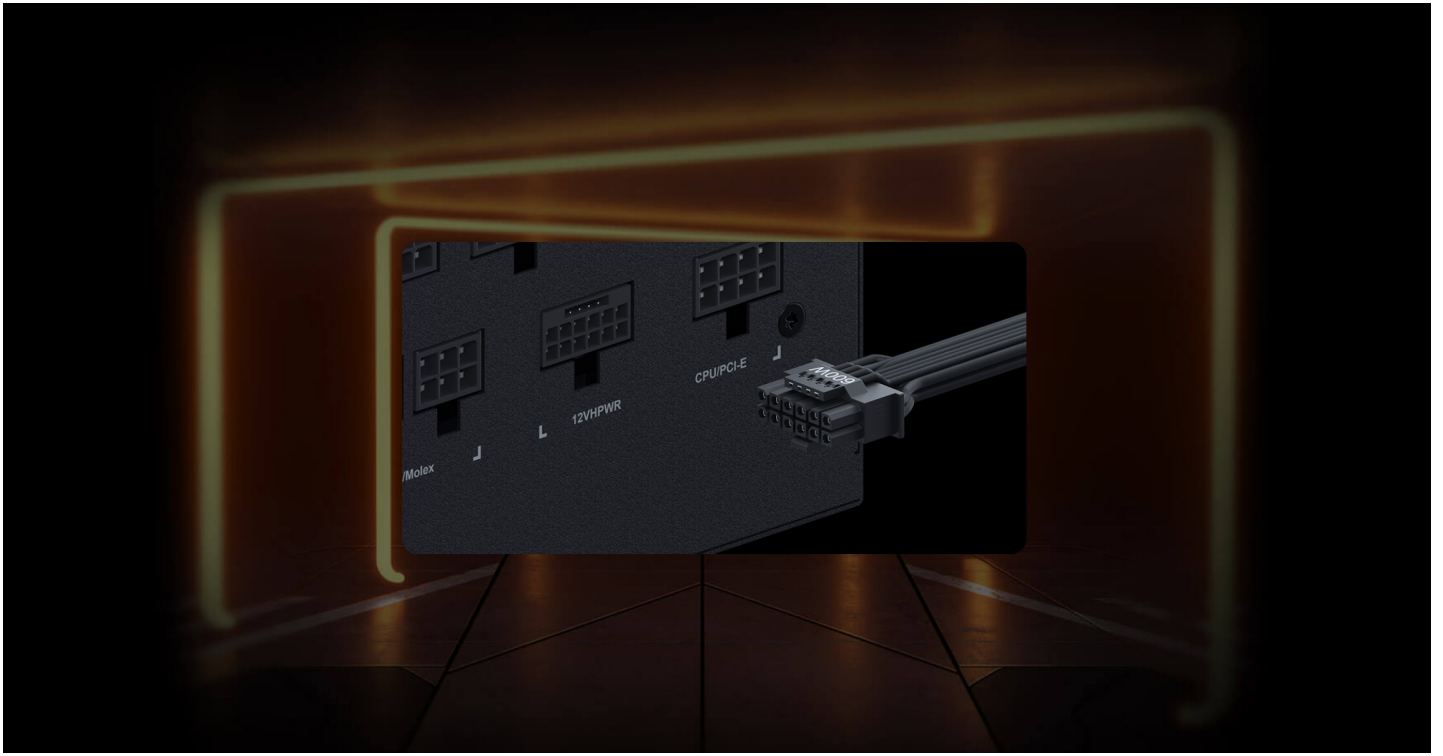
Features



KEY FEATURE

- Ultra Durable
 - Main Japanese capacitors
 - Enhanced thermal solution
 - 120mm smart hydraulic bearing (HYB) fan
 - OVP/OPP/SCP/UEP/OCP/OTP protection
- Support PCIe Gen 5.0 graphics card
- High-quality native 16-pin cable supports 600W output
- 80 PLUS Gold certified
- Fully modular design
- Compact design





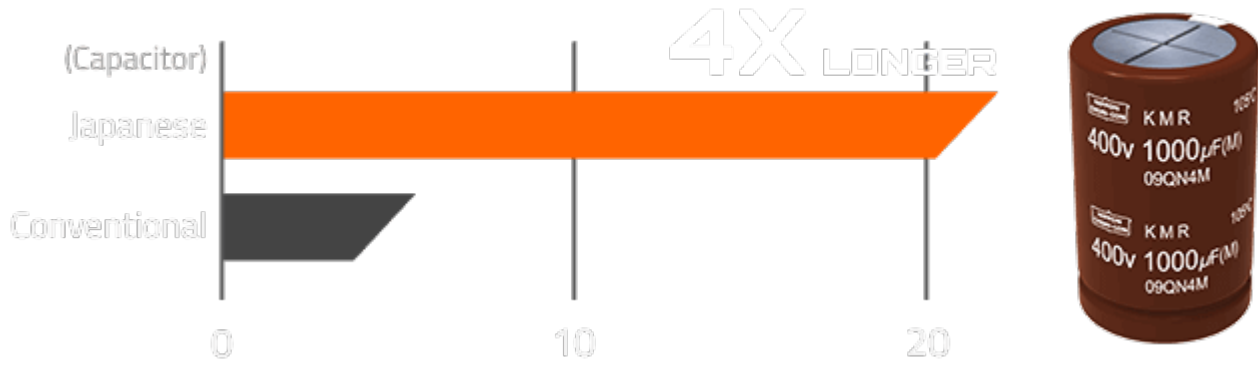
Support PCIe Gen 5.0 graphics card

The UD1000GM PCIE 5.0 has a 16-pin connector and comes with a high-quality native 16-pin cable that allows you to use the PSU with a PCIe Gen 5.0 graphics card. This cable can support up to 600 watts of power to the graphics card.



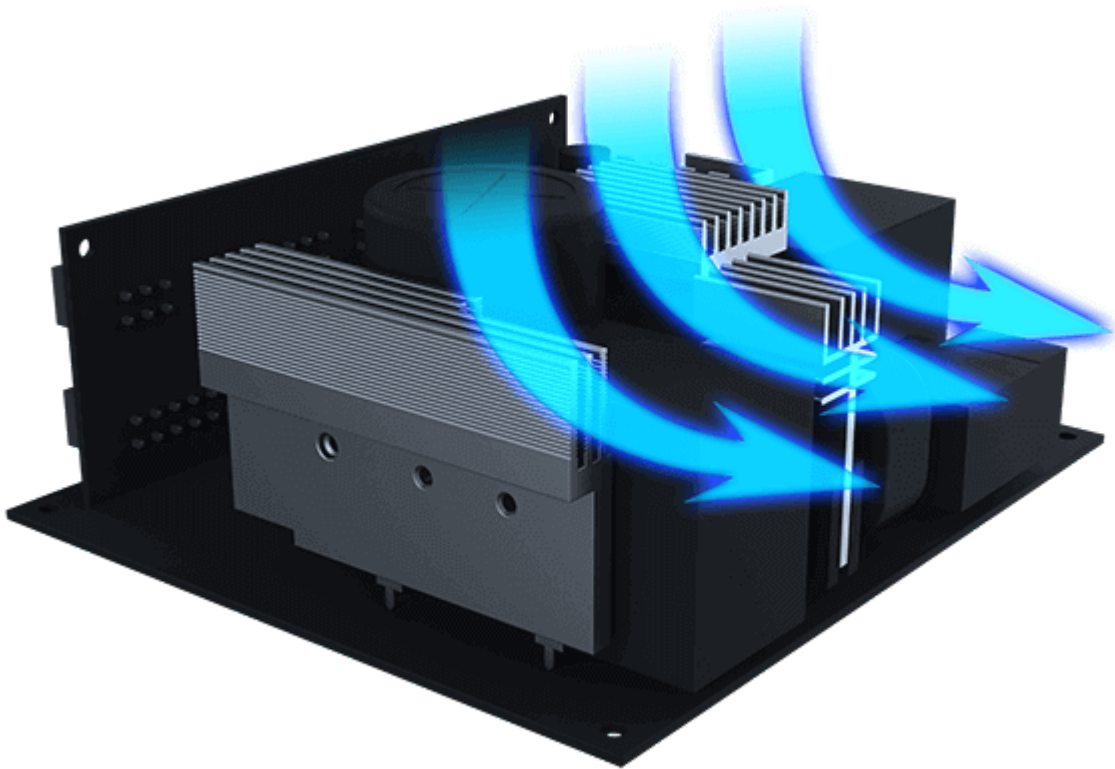
ULTRA DURABLE

Inherit the product design spirit of GIGABYTE Ultra Durable, thus introducing a variety of high-quality materials and designs. Ultra Durable combines high-quality main Japanese capacitors, enhanced thermal solution, 120mm smart hydraulic bearing (HYB) fan, and six circuit protection designs. It provides consumers with a high-quality and stable power supply, and can be used for a long time.



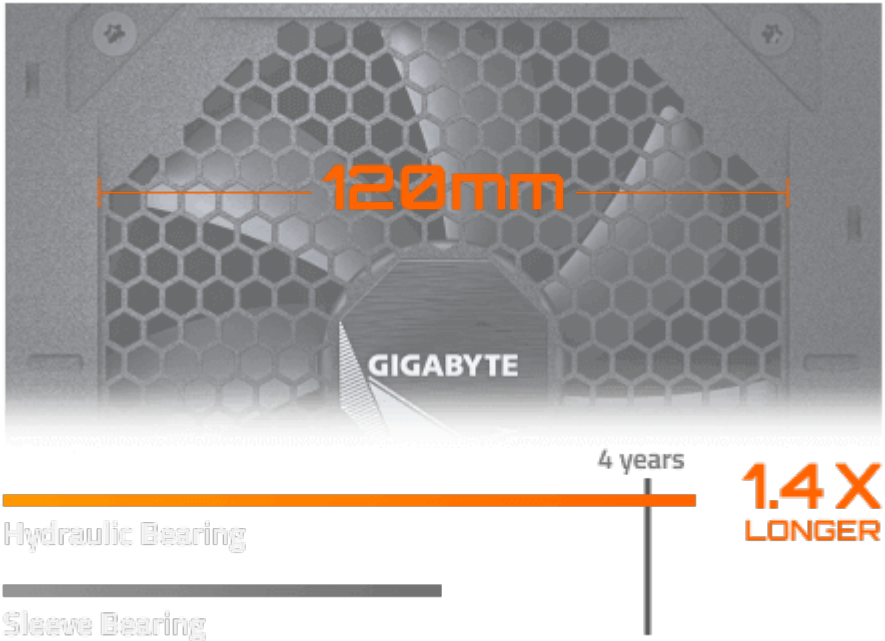
**HIGH QUALITY
JAPANESE CAPACITORS**

The main capacitors use high quality Japanese capacitors to produce the efficient performance and ensure the longer reliability.



**ENHANCED THERMAL
SOLUTION**

Compared with the standard thermal solution, we have enlarged the heatsink by about 200% or more, and optimized the airflow. The heat dissipation performance is increased by more than 10%, thus prolonging the service life of the components.



120MM SMART HYDRAULIC BEARING (HYB) FAN

The fan speed is adjusted according to the automatic power detection and stops when the system is idle or under low load (less than 20% load). The hydraulic bearing fan provides longer and more stable life time.

- | | |
|-------------------------------------|--|
| OCP Over Current Protection | OTP Over Temperature Protection |
| OVP Over Voltage Protection | OPP Over Power Protection |
| UVP Under Voltage Protection | SCP Short Circuit Protection |

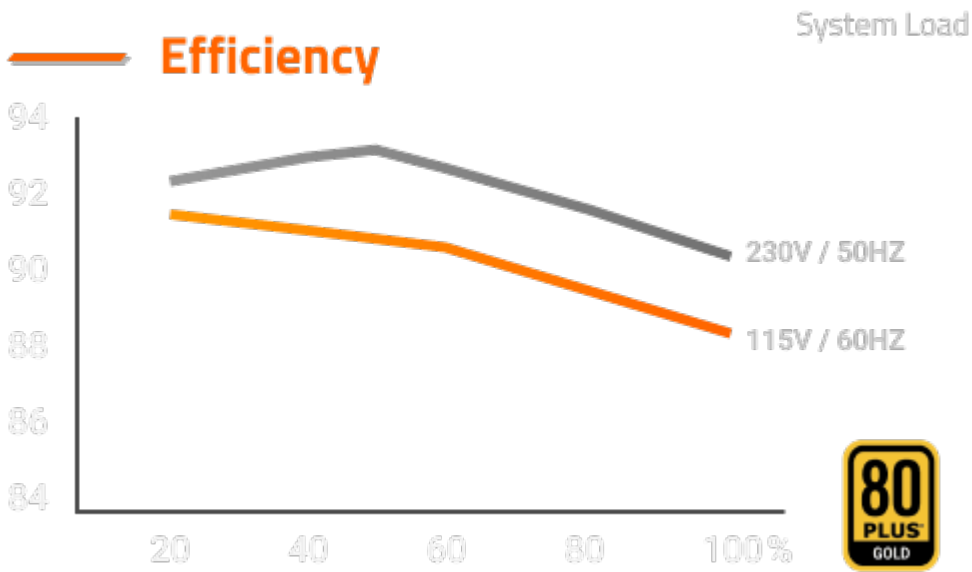
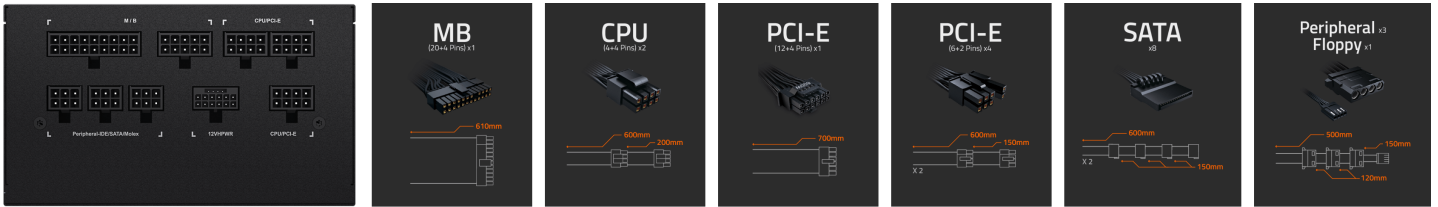


PROTECTION

In order to make sure the entire computer system to operate stably under any conditions, we not only added protection designs such as OCP, OTP, OVP, OPP, UVP and SCP, but also ensured the stable operation of your system through the safety certification of various countries.

FULLY MODULAR DESIGN

All the black flat cables are modular design. Installing only the cables you need to reduce clutter, to increase the airflow and to improve the chassis thermal performance.



80 PLUS GOLD CERTIFIED

80 Plus Gold certified ensures to deliver 90% efficiency at 50% load. The better power efficiency leads to less power waste, less heat and less fan noise.

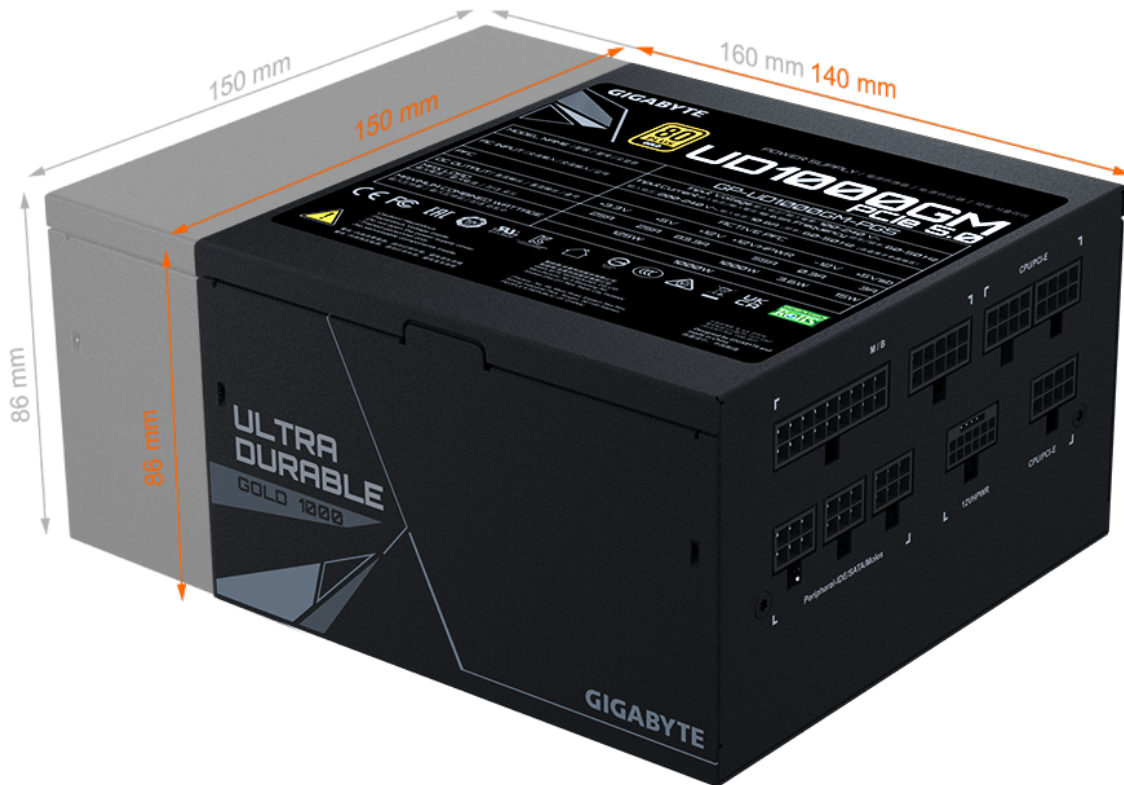
AC Input	Input Voltage	100V - 240V				
	Input Current	15 - 6.5A, (China: 10 - 6A)				
	Frequency	60 - 50Hz				
PFC	ACTIVE PFC					
DC Output	+3.3V	+5V	+12V	+12 VHPWR	-12V	+5Vsb
Output Current	25A	25A	83.3A	55A	0.3A	3A
Maximum Combined Wattage	125W		1000W		3.6W	15W
	1000W					

PLENTIFUL POWER SUPPLY

The +12VHPWR and the +12V can provide a total of 1000W power output. The +12VHPWR can provide up to 600W for the latest PCIe Gen 5.0 graphics card.

COMPACT DESIGN

With the help of engineers' excellent design capabilities and heat dissipation technology on various hardware products, and the use of higher quality materials, GIGABYTE has reduced the length of the power supply to an amazing 140 mm, so it can be easily installed in any chassis without space constraints.



Specifications

General

Brand	GIGABYTE
Model	GP-UD1000GM PG5

Details

Type	ATX 12V v2.31
Maximum Power	1000 W
Fans	120mm Hydraulic Bearing (HYB) fan
PFC	Active

Main Connector	20+4Pin
+12V Rails	2
PCI-Express Connector	1 x 16-Pin, 4 x 6+2-Pin
SATA Power Connector	8
Modular	Full Modular
Power Good Signal	100-150ms
Hold-up Time	>16ms
Efficiency	90% at typical load
Energy-Efficient	80 PLUS GOLD Certified
Protection	OVP/OPP/SCP/UVI/OCP/OTP
Input Voltage	100 - 240 V
Input Frequency Range	50/60 Hz
Input Current	15-6.5A
Output	+3.3V@25A, +5V@25A, +12V@83.3A, +12VHPWR@55A, -12V@0.3A, +5VSB@3A
MTBF	>100,000 Hours
Approvals	BSMI/CE/CCC/FCC/TUV/RCM/CB/EAC/KCC/UL
Max PSU Length	140 mm
Connectors	1 x 24 pin (20+4) ATX 2 x 8 pin (4+4) EPS (CPU) 1 x 16 pin PCIe 4 x 8 pin (6+2) PCIe 8 x SATA 3 x 4 pin Peripheral 1 x Floppy
Cable Spec	20+4Pin MB: One cable (610mm) 2 x 4+4Pin CPU: One cable (600+200mm) PCI-E 16Pin: One cable (700mm) 2 x PCI-E 6+2Pin: Two cables (600+150mm) 4 x SATA: Two cables (600+150+150+150mm) 3 x 4Pin Peripheral + 4Pin floppy: One cable (500+120+120+150mm)

Features

Features	<p>Ultra Durable</p> <ul style="list-style-type: none"> - Main Japanese capacitors - Enhanced thermal solution - 120mm smart hydraulic bearing (HYB) fan - <p>OVP/OPP/SCP/UVP/OCP/OTP protection</p> <p>Support PCIe Gen 5.0 graphics card</p> <p>High-quality native 16-pin cable supports 600W output</p> <p>80 PLUS Gold certified</p> <p>Fully modular design</p> <p>Compact design</p>
-----------------	---

Dimension & Weight

Dimensions	3.39" x 5.91" x 5.51"
-------------------	-----------------------

Additional Information

Brand	Gigabyte
SKU	GP-UD1000GM-PG5
Weight	9.0000
Color	Black
PSU Type	ATX
PSU Style	Modular
PSU Wattage	1000W
PSU Efficiency	80 PLUS Gold
Vendor SKU/EAN	810075653052

