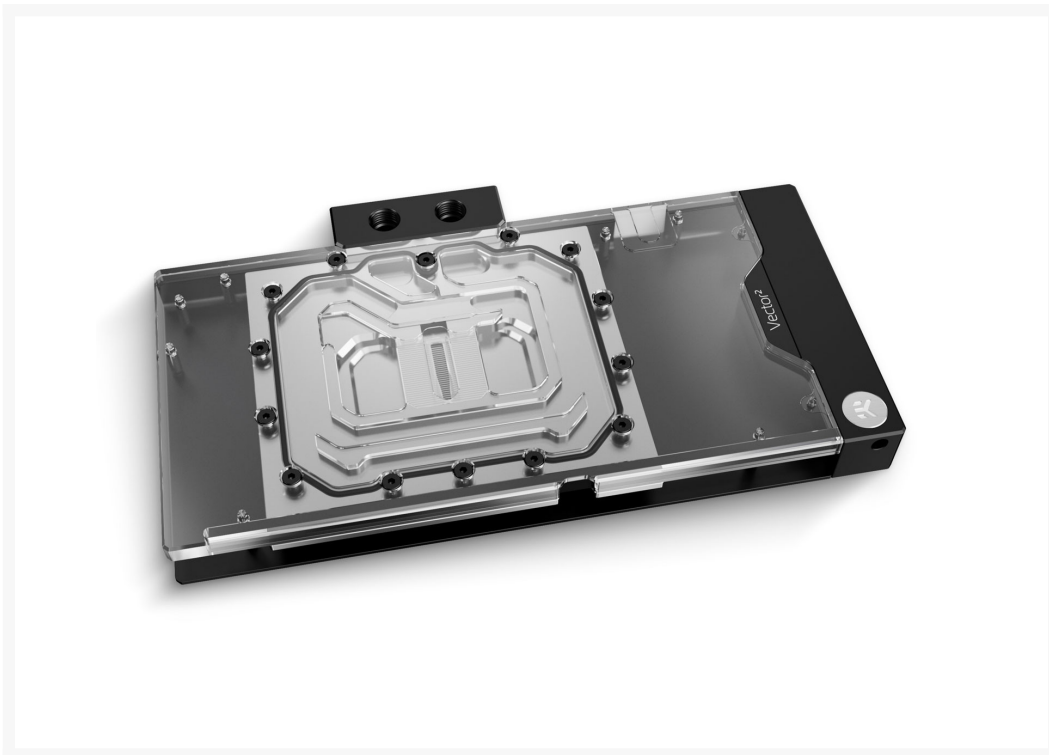




# EK-Quantum Vector<sup>2</sup> Master RTX 4080 D-RGB - Nickel + Plexi

\$302.99

## Product Images



## Short Description

The latest Vector<sup>2</sup> water blocks effortlessly solve the issue of excessive heat generation during high load on the GPU core, voltage regulation module, and GDDR6X VRAM for the complete Gigabyte GeForce® RTX™ 4080 lineup – Aorus Master, Gaming, Aero, and Eagle series GPUs.

### High-Performance GPU Cooling

The latest Vector<sup>2</sup> water blocks effortlessly solve the issue of excessive heat generation during high load on the GPU core, voltage regulation module, and GDDR6X VRAM for the complete Gigabyte GeForce® RTX™ 4080 lineup – Aorus Master, Gaming, Aero, and Eagle series GPUs.

### Backplate Included

The package contains:

- A high-performance GPU water block of the latest generation
- Premium-quality CNC-milled backplate
- Mounting mechanism
- Thermal paste
- Thermal pads
- GPU and PCI power cable release tool

A black full-coverage backplate is included with the GPU water block. Its distinctive L-shaped profile encloses the entire GPU and, at the same time, increases the cooling surface area. The backplate also comes with pre-installed captive backplate screws that simplify the installation. These ensure that the correct size screw is always used where needed.

## Features

---

### Technical and Visual Masterpiece

Minimalistic straight lines dominate the look of these next-gen water blocks. An 11mm-thick copper coldplate is used for all Vector<sup>2</sup> GPU water blocks. For Plexi versions, D-RGB lighting is now deployed on the longest edge of the water block for improved fidelity and brightness from every viewing angle. The LED PCB is concealed inside a clean aluminum extrusion.

### EK-Matrix7 Standard – Easier Loop Assembly and Straight Lines

Matrix7 standardizes the dimensions of the products, including the port position and spacing, making liquid cooling loop assembly more intuitive and easier. EK-Quantum Vector<sup>2</sup> GPU cooling enclosures follow the EK-Matrix7 standard, making them seamlessly integrate with EK-Quantum Reflection<sup>2</sup> distribution plates. This brings compatibility with the EK vertical GPU mount | perfect alignment of ports in both horizontal and vertical positions, meaning less time used for planning of the loop, bending tubes, and the end result will still be an epic build.

# EK-Quantum Vector<sup>2</sup> Master RTX 4080 D-RGB - Nickel + Plexi

The EK-Quantum Vector<sup>2</sup> Master RTX 4080 D-RGB - Nickel + Plexi GPU water block and backplate set is compatible with the following graphics cards:

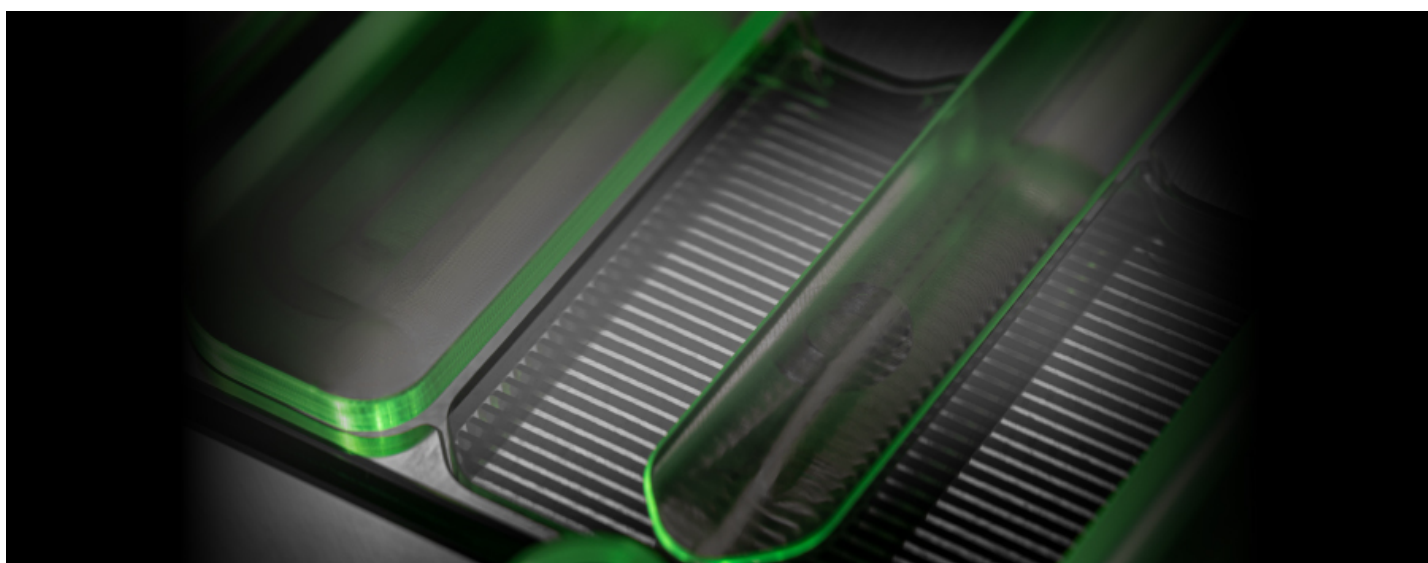
- AORUS GeForce RTX™ 4080 16GB MASTER
- Gigabyte GeForce RTX™ 4080 16GB GAMING OC
- Gigabyte GeForce RTX™ 4080 16GB AERO OC
- Gigabyte GeForce RTX™ 4080 16GB EAGLE OC

For a precise compatibility match of this water block, we recommend you [refer to the EK Cooling Configurator](#).

## New Cooling Engine - Best Cooling in Every Scenario

The Vector<sup>2</sup> water block actively cools the GPU, VRAM, and power stages, while passively cooling the PCB hotspots found on the backside of the GPU core, VRAM, and VRM (voltage regulation module).

The implemented Vector<sup>2</sup> cooling engine uses a novel 3D-machined acrylic insert to improve flow distribution and thermal performance. This new cooling engine is based on an Open Split-Flow design, but the asymmetric shape of the jet insert helps distribute an even flow between the first and last copper fins. The fin structure geometry has been optimized to provide even flow distribution with minimal losses and optimal performances even when used in reversed water flow scenarios. It is also characterized by low hydraulic flow restriction, meaning it can be used with weaker water pumps or pumps running on low-speed settings and still achieve top performance.



Great care was taken to achieve a symmetrical flow domain by utilizing an internal bridge to secondary components. This was done to ensure the cooling of secondary components without sacrificing flow distribution over the GPU core.

## Premium Materials and Clever Engineering for Longevity and Top Performance

All Vector<sup>2</sup> GPU water blocks use an 11mm-thick copper coldplate with an acetal terminal attached to it, creating a robust assembly. A single O-ring design makes a seal between the coldplate and the water block top, reducing the number of failure points. This also means that you have previously seen the end of stainless-steel bridge plates utilized on GPU water blocks. This simple construction provides confidence

during customization and maintenance. Tactile magnetic covers conceal the terminal screws, allowing the branding to rotate when the GPU is inverted in the case.

The coldplate is CNC-machined out of high-quality, pure electrolytic copper, which is then nickel-plated, while its top is CNC-machined out of glass-like cast acrylic. The black anodized backplate has a new L-shaped profile that connects with the water block base and encloses the entire GPU while increasing the cooling surface, leading to even better performance.

## Included Backplate

For the first time, captive backplate screws are added to the backplate. They simplify installation, ensuring the correct length is always used where needed, preventing user errors and second-guessing.

The backplate improves your graphics card's overall aesthetics and provides additional passive cooling for the backside of the printed circuit board VRM, core, and VRAM sections.

## Rotatable Magnetic Covers

Sleek magnetic covers conceal the terminal screws, allowing the branding to rotate when the GPU water block is inverted in the case or used on a vertical GPU mount.

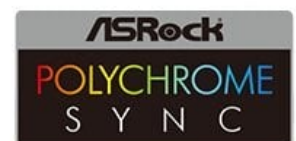


## Addressable D-RGB Compatibility

Addressable RGB LED lighting is deployed on the longest edge of the water block for improved uniformity and brightness. The PCB and diodes are concealed inside a clean aluminum extrusion. The individually-addressable RGB LED is compatible with popular RGB sync technologies from all major motherboard manufacturers. The arrow marking on the 3-pin D-RGB LED connector should be aligned with the +5V marking on the D-RGB (addressable) header (Pinout: +5V | Data | Blocked | Ground).



MYSTIC  
LIGHT



# Vector<sup>2</sup> Water Blocks Won an iF Design Award

EK's premium water blocks from the Quantum Vector<sup>2</sup> product line boast one of the iF Design Awards for 2022. These prestigious awards signify top-tier design levels delivered by our products to both consumers and the design community. Not only do Vector<sup>2</sup> water blocks have aesthetically pleasing looks to deserve these awards, but they also bring patent-pending technologies and valuable features to the table.



## Specifications

---

Technical Specification:

- Dimensions (L x H x W): 272 x 155 x 27mm
- D-RGB LED count: 14
- D-RGB cable length: 50cm
- D-RGB connector: 3-pin 5V digital LED header (Pinout: +5V | Data | Blocked | Ground)

Made in Slovenia - Europe!

PLEASE NOTE:

- Due to an immense variety of fittings/barbs available on the market and no prescribed standards, we guarantee compatibility only for connectors bought in our webshop.
- Factory backplates are not compatible with this water block!
- This product should NOT be installed with any aluminum [Fluid Gaming](#) parts!
- Using specifically engineered coolants that contain corrosion, scale, and biological inhibitors is mandatory to prevent damage to your nickel-plated water block. EK offers a selection of such products in the Coolants section.

## Additional Info

	Nickel Plexi
	G1/4

	Nvidia GeForce
--	----------------

## Additional Information

---

Brand	EK Waterblocks
SKU	EK-QUANT-VEC2-MASTER-4080-DRGB-NP
Weight	7.7500
Color	Black
Vga	AORUS GeForce RTX™ 4080 16GB MASTER
Block GPU Type	Nvidia
Block Style	Nickel-Plexi
Vendor SKU/EAN	3831109902868

