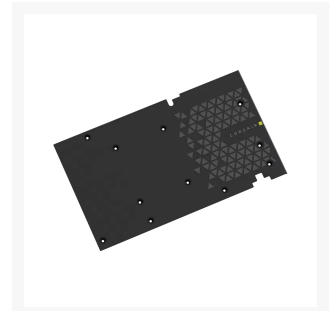
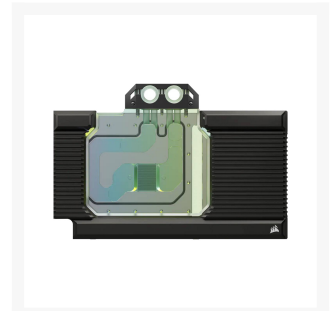
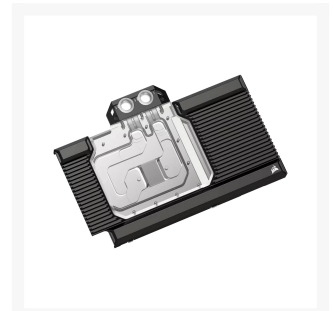
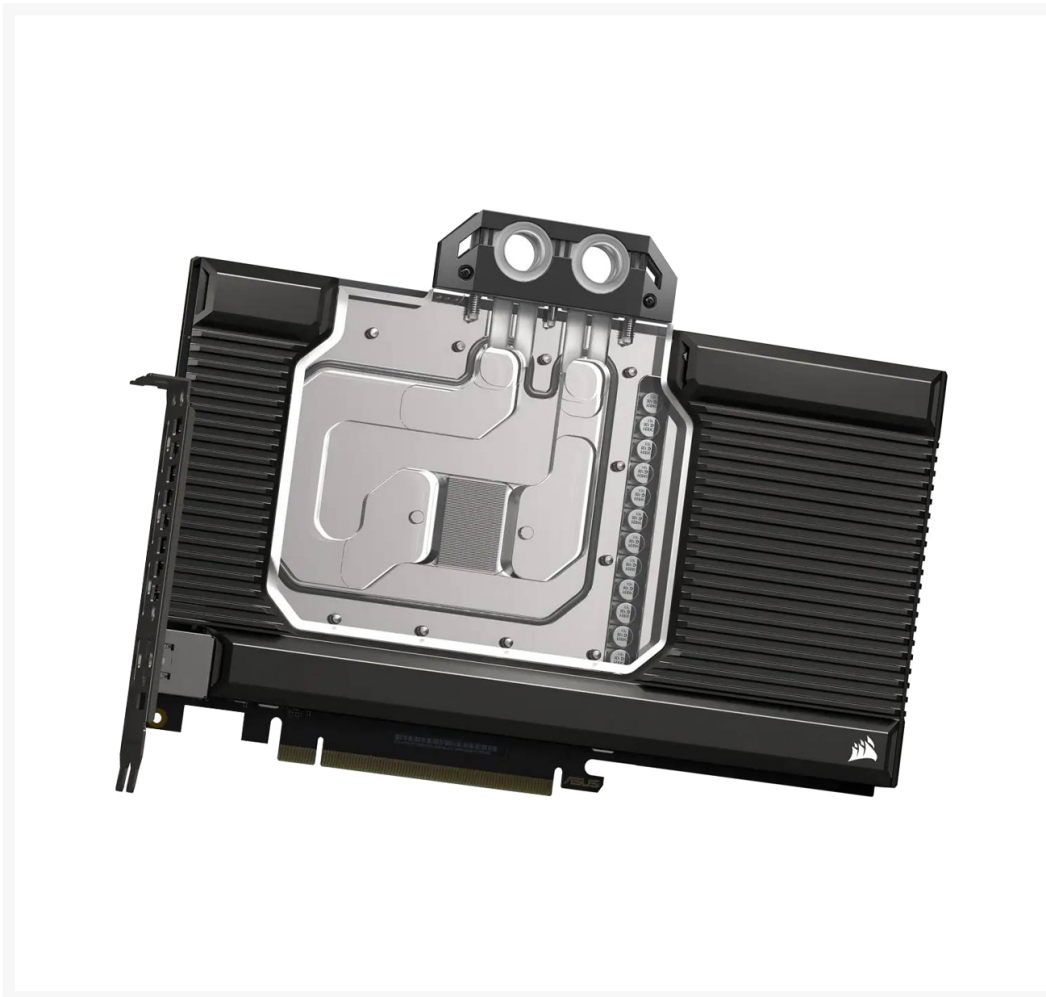




Corsair Hydro X Series XG7 RGB 40-SERIES GPU Water Block (4090 STRIX/TUF)

\$224.99

Product Images



Short Description

The CORSAIR XG7 RGB 40-SERIES STRIX/TUF GPU Water Block is a total conversion copper water block for your ASUS® ROG STRIX or TUF Gaming GeForce RTX™ 4090 graphics card.

Description

The CORSAIR XG7 RGB 40-SERIES STRIX/TUF GPU Water Block is a total conversion copper water block for your ASUS® ROG STRIX or TUF Gaming GeForce RTX™ 4090 graphics card. CNC-milled nickel-plated copper construction and high-density cooling fins positioned over the GPU maximize heat transfer and surface area, with full-length aluminum casing and an included backplate. The transparent flow path and discrete RGB lighting puts your graphics card on full display. Combine with a CORSAIR iCUE controller and the powerful CORSAIR iCUE software to customize the lighting to your mood or sync it with your games. With pre-applied thermal material, standard G1/4" threads and easy to follow step-by-step instructions, it's never been easier to custom cool your new GPU

Features

FEATURES:

- Unlock Your GeForce RTX™ 40-Series GPU's True Potential: Unlock your GPU's true potential with custom cooling for your graphics card.
- Precision CNC Cut Nickel-Plated Copper Construction: More than 50 high-density cooling fins positioned over the GPU maximize heat transfer and surface area, for lower temperatures and increased maximum performance
- Total Conversion Design: Cools not just the GPU, but your graphics card's memory and VRM as well, all clad in a clean and stylish aluminum casing
- Heighten Your System's Style: Constructed with a unique manifold inspired by the iconic and refined look of CORSAIR DOMINATOR PLATINUM memory
- Full-Length Aluminum Backplate: Completely covers your graphics card's PCB and protects sensitive components.
- Built-In RGB Lighting: 16 Individually addressable RGB LEDs integrated directly into the GPU block provide vibrant customizable RGB lighting when combined with a CORSAIR iCUE Controller (sold separately) and CORSAIR iCUE software.
- Fully Transparent Flow path: An acrylic top plate and transparent flow path puts your coolant and RGB lighting on display
- Pre-Applied Thermal Material and Thermal Pads: Pre-applied thermal material and thermal pads make installation quicker and easier.
- Unite Your Setup: Combine with a CORSAIR RGB lighting controller (sold separately) and powerful CORSAIR iCUE software for customization and synchronization of RGB lighting across all your CORSAIR RGB products.
- 5V ARGB Motherboard Adapter Cable Included: Conveniently control lighting directly via a compatible motherboard 5V ARGB connector
- Step-by-Step Installation Guide: Takes the mystery out of custom cooling, with easy-to-follow video tutorials.
- Standard G1/4" Threads: Universal fitting compatibility for inlet/outlet ports.

Specifications

SPECIFICATION:

- Product Type: GPU Water Block
- Cold Plate Fins: 50+
- Cold Plate Material: Nickel Plated Copper
- Fluid Chamber Material: PMMA
- GPU Compatibility ASUS® ROG STRIX and TUF Gaming GeForce RTX™ 4090
- Compatible Materials: Only mix with other copper / brass product
- Compatible Coolants: CORSAIR XL or equivalent
- Port Threads: G1/4" BSPP
- Max Operating Temps: 60°C coolant temperature
- Thermal Material: Pre-applied thermal paste and pads
- Required Controller for ICue Support: CORSAIR Commander pro / Commander Core XT / Lighting Node PRO
- Lighting: RGB
- Color: Black

Additional Information

Brand	Corsair
SKU	CX-9020020-WW
Weight	3.5000
Color	Black
Vga	ASUS TUF and ROG Strix RTX 4090
Block GPU Type	Nvidia
Block Style	Nickel-Plexi
Vendor SKU/EAN	0840006698951

