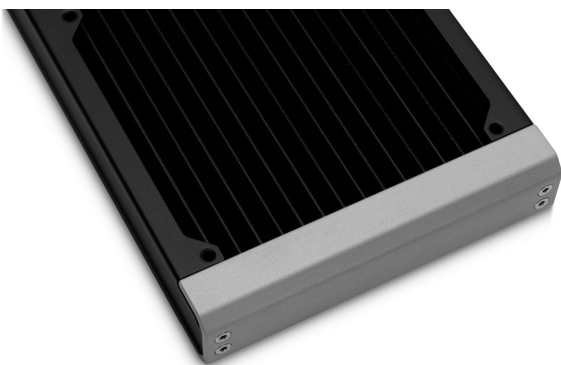
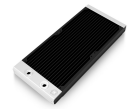


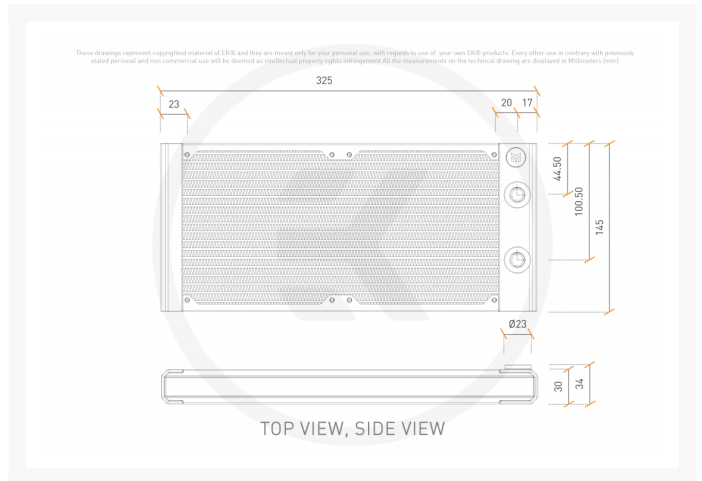
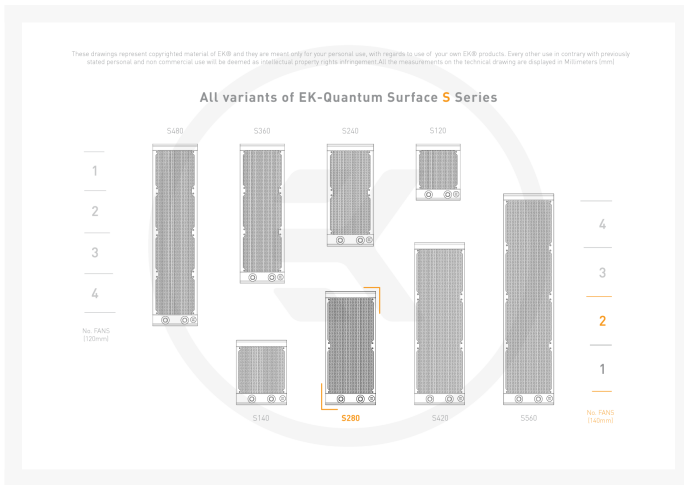


EK-Quantum Surface S280 - Black

\$102.99

Product Images





Short Description

With a thickness of only 30mm, the EK-Quantum S Series Surface radiators are ideal for space-constrained cases. Despite the reduced thickness, they deliver exceptional performance at very low and medium fan speeds.

Description

Details

With a thickness of only 30mm, the EK-Quantum S Series Surface radiators are ideal for space-constrained cases. Despite the reduced thickness, they deliver exceptional performance at very low and medium fan speeds. A total of 16 copper 2mm wide tubes across the entire length of the radiator assure optimal coolant flow putting no stress on your cooling loop. High-grade non-louvered copper fins with 20 FPI density provide the best balance between thermal transfer and air resistance for optimal performance even at low-speed fan operation. A Push/Pull setup on an S Series EK-Quantum Surface radiator is not something EK would recommend since it will not bring a proportional performance increase. If more cooling power is needed, adding additional radiators is the way to go.

New and Improved

The EK-Quantum Surface S series radiator maximizes performance by utilizing a new radiator core. When comparing core to core performance, the Surface S radiator performs up to 20% better than its predecessor, the CoolStream SE, due to its enhanced fin structure and optimized core.

EK-Quantum Surface premium radiators are built upon years of development and market research to deliver the best product that the market demands in every possible way. The finish of the materials, mechanical rigidity, and performance have all been brought to another level. Like all other Quantum Line products, EK's brand new Surface radiators bring numerous performance improvements, including thermal performance, coolant flow restriction, and airflow restriction.

With the supplied screws, this radiator is compatible with 120mm fans that have a standard 25mm thickness. EK recommends using EK fans or similar ones with sealed-edge frames. This classic yet effective square shape of the fan casing provides optimal performance in either the pull (suction) or push (pressure) regime without any hydraulic losses, thus ensuring the optimal cooling capacity of your liquid cooling radiators.

Thick, extruded aluminum end caps with a contrasting silver finish give the radiator a premium look and feel. They cover the internals and join the stamp-pressed side plates, creating a rigid structure that is pleasant to handle. The stainless-steel side plates are coated with a durable semi-matte white paint, while the fins themselves have a special black matte coating with a high thermal conductivity coefficient. The shade of white is carefully picked to match some of the most popular white cases on the PC market.

M4 Screws – Standardized, Easy to Find

Hard-wearing black M4 Philips round-headed screws are supplied for ease of use. In general use case scenarios, EK strongly suggests using only the included screws to avoid damage to the radiator itself. However, M4 screw compatibility allows the users to source longer screws if necessary. The cooling core is designed to cause no detrimental damage to the structural integrity of the radiator core even if the customer uses longer screws accidentally, as they will collide only with the fins.

Easy Disassembly – DIY Modding Dream

The EK-Quantum Surface range was designed and executed as a modular product range rather than individually sized radiators. Such a design achieves immaculate fitment and continuity in appearance while at the same time making the disassembly process very easy and straightforward. Catering to the DIY modding community is something EK has always been supporting, so painting and modifying your Surface radiator will be a breeze,

Loop Friendly – Don't Worry About Your Pump

The internal structure design of the radiators was executed with low flow restriction in mind, providing no unnecessary stress on the rest of the cooling loop. This means you will be able to add multiple radiators to your cooling loop using only a single pump (D5 or DDC). The radiators are also airflow-friendly and low-restriction, allowing lower fan speed operation to achieve the same performance. Low airflow restriction keeps the case well ventilated and allows other radiators in the case to breathe properly.

EK-Matrix7 Compatible – For the Cleanest Tube Runs

Since any custom liquid-cooling loop is built from multiple EK products, the most valuable distinction in aesthetics and ease of use comes from the sum of all the parts. To address this, EK initiated Matrix7, a system that standardizes products' dimensions, as well as port position and spacing. In so doing, we are making the liquid cooling loop assembly more intuitive and having a clean set of parallel tubing runs easier than ever before.

All EK-Quantum Surface radiators are EK-Matrix7 compatible, which means they effortlessly integrate with Reflection², the second generation of Quantum distro plates. This enables the user to easily swap and upgrade between S, P, and X series Surface radiators within the same case (provided the case supports thicker radiators in the same position).

Specifications

Technical and Material Specifications:

- High-grade 99.9% copper fins
- Copper H90 tubing
- Brass H62 end tank chambers
- Stainless Steel side plates
- Extruded Aluminum Silver anodized end piece covers
- Brass nickel-plated adapters and plugs

Dimensions: 325 x 145 x 30mm (L x W x H)

Weight: 0.85kg

FPI: 20

Port threads: 2x G1/4"

Fan compatibility: 140x140x25mm fan

Pressure tested: 1bar

Enclosed:

- EK-Quantum Surface S series radiator
- 8x M4x30mm for 25mm thick fans
- 8x M4x5mm for mounting the radiator directly to the case

Designed and Engineered in Slovenia

Made in China

PLEASE NOTE:

- Use of the improperly long screws may result in piercing of the radiator core and irreparably damage the product. Such misuse is not covered by the product warranty!
- This product should NOT be installed with any aluminum parts!
- The radiator fins are made of copper, which is orange in nature. When painting the fins, a very thin layer of paint is applied not to reduce their thermal transfer capabilities. This is why the radiator fins are visibly orange when looking at them from a high angle.

Additional Info

	G1/4
	2
	140mm

Additional Information

Brand	EK Waterblocks
SKU	EK-QTM-SURF-S280-BK
Weight	2.2000
Color	Black
Radiator Size	280 (2 x 140mm)
Radiator Thickness	30mm
Vendor SKU/EAN	3831109838259

