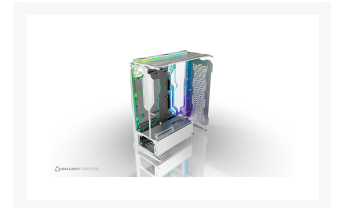
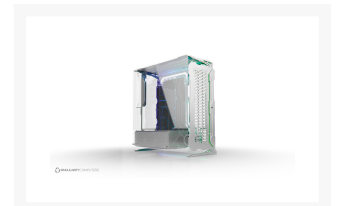


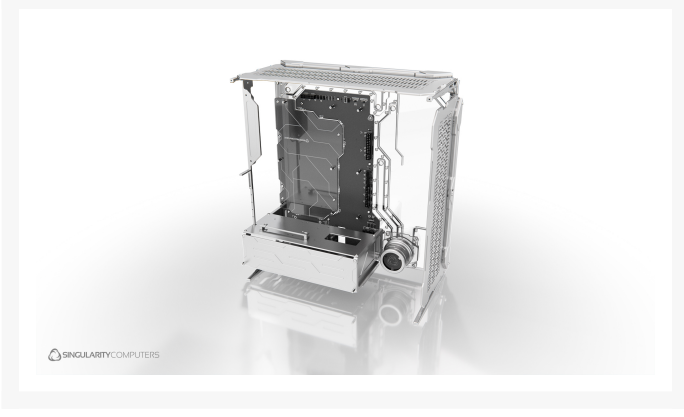
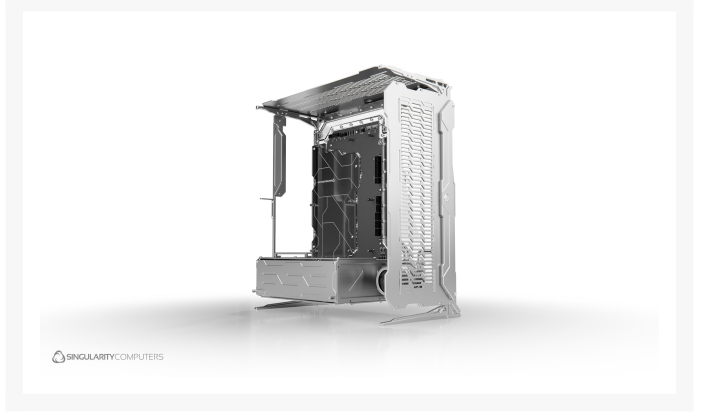
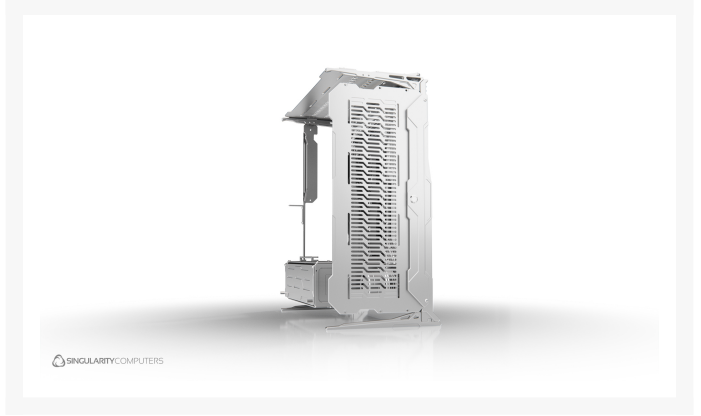
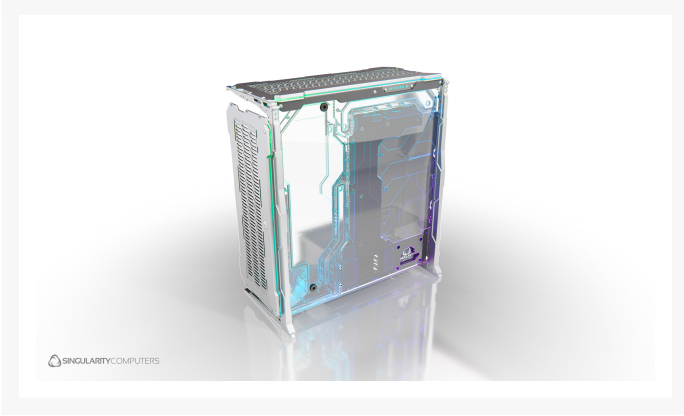
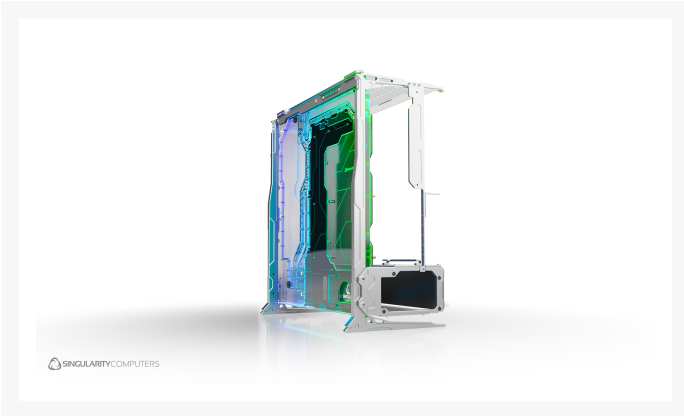


Singularity Computers Spectre Integra-M - Silver

\$999.95

Product Images





Short Description

Spectre 3.0 Integra-M is a more compact ATX version of Spectre. It is a full re-design using everything we have

learned from the development of Spectre which has continued since 2015. Integra-M is 25% smaller than Spectre 3.0 (all versions) but maintains all the features, except that it fits ATX motherboards and two 360mm radiators which are 40mm thick. Integra-M has a large part of the water-cooling loop integrated with a completely new distribution plate design. It has a fully integrated solution for cables with the Singularity Computers PowerBoard. Previously we have created PowerBoards for existing cases, but for Integra-M we have developed the PowerBoard and case together.

Description

Spectre 3.0 Integra-M is a more compact ATX version of Spectre. It is a full re-design using everything we have learned from the development of Spectre which has continued since 2015. Integra-M is 25% smaller than Spectre 3.0 (all versions) but maintains all the features, except that it fits ATX motherboards and two 360mm radiators which are 40mm thick. Integra-M has a large part of the water-cooling loop integrated with a completely new distribution plate design. It has a fully integrated solution for cables with the Singularity Computers PowerBoard. Previously we have created PowerBoards for existing cases, but for Integra-M we have developed the PowerBoard and case together. This means that both have become far more streamlined, meaning more features and compatibility. The PowerBoard supports the most high-end components and includes two of the new 12VHPWR connectors along with x3 8pin PCIE connectors. It has built in filter capacitors, 24 integrated ARGB and UV LEDs facing inwards and outwards, integrated direct connect SATA, power, and reset buttons, and a touch activated power button. There is no rear access needed to the case for cable management, all cables can be connected from the front and little to no cable management is needed. Black sleeved linking cables are included with the case. Custom colored sleeved linking cables can be purchased separately.

Cables & Adaptors:

Custom hand built MDPC-X PowerBoard cables with a large range of sleeve colours available [here](#)

PowerBoard Cables are available [here](#)

SC Shift Adaptors are available [here](#)

Note: Motherboards with 90 degree 24pin, EPS and/or 6pin PCIE supplementary power connections will require SC Shift Adaptors for clean cable routing.

Note: D5 Pump not included.

[Spectre Integra-M Gallery](#)

Features

Integrated Liquid Cooling Features:

Reservoir, D5 Pump Top, D5 Pump Cover, Fill Port, Drain Port, parts of the cooling loop.

PowerBoard Integration:

The PowerBoard is a PCB integrating 24pin, EPS, PCIE and 12VHPWR along with PWM and ARGB Hubs, SATA and Power and Reset Buttons. The Spectre Integra-M PowerBoard also has an integrated touch sensing Power Button. The PowerBoard has x24 ARGB and UV LEDs positioned around the external and internal perimeter to optimally light up the distribution plate. The LEDs can be switched on or off and you can switch between ARGB or UV or have both on at the same time. Essentially the PowerBoard is a distribution plate for cables also integrating other features and functions. It is a new method for cables allowing standardization of

cable lengths and making cable management almost unnecessary. Spectre 3.0 Integra-M comes included with a standard set of black sleeved linking cables including 24pin x1, 8pin EPS x2, 8pin PCIE x3 meaning that these cables don't have to be purchased separately.

Reduced build time due to integration:

With the pump, reservoir, fill and drain ports, parts of the water-cooling loop, the core component cables, PWM and ARGB hubs all integrated there is less assembly to be done. Also, less fittings and tube are needed. No cable management for the core component cables thanks to the PowerBoard integration.

Integration Cost Component:

A large portion of the case cost is due to the integration. These are components you do not have to purchase for your build. The pump, reservoir, cables, hubs, less fittings, less tube, no lighting, no cable combs, or cable management components.

Integration & Optimization:

With the integration we did not just develop a case, we also developed all the integrated components. This meant that we could focus more on optimization than would normally be possible. The integrated loop routes in Spectre Integra-M allow for more flow than 16mm tubes. The pump top was designed for the D5 pump, maximizing flow to and from the distribution plate. The reservoir was designed to remove air as quickly as possible making the loop easier to fill. The fill port is at the highest point on the back for the case and the drain point at the lowest point.

High End Components:

Spectre 3.0 Integra M fits ATX motherboards and has 7 expansion slots. It is designed to fit the largest high-end GPUs. It can fit the largest PSUs up to 220mm. For the water-cooling system it can fit 2x 360mm radiators 45mm thick with a single set of fans and the D5 pump. The PowerBoard can handle the most high-end PSUs and components.

Radiator Adjustment:

The radiator mounting panels have a large range of adjustment to help with port alignment to the distribution plate.

Storage:

Spectre Integra-M has 7x 2.5" Drive positions. Two are on the top of the PSU shroud, four inside of the PSU shroud and there is one integrated on the PowerBoard. The two on top of the PSU shroud cannot be used with vertically mounted GPUs.

Specifications

Specifications

Water-cooling Integration:

Reservoir, Pump Top, Pump Cover, Fill Port, Drain Port, Parts of water-cooling loop.

Ports: x6 G1/4" BSPP. 1x Fill Port. 1x Drain Port.

Pump: (Not included): Compatible with all D5 pumps.

PowerBoard Integration:

Core Component Cables: 24pin x1. 8pin EPS x2. PCIE 8pin x3. 12VHPWR x2. 6pin PCIE MB Supplementary x1.

Hubs: PWM: x3. ARGB: x10 (Single input for each).

LEDs: x24 Integrated ARGB 90-degree LEDs and x24 UV 90-degree LEDs facing around the internal and external perimeter of the PowerBoard. There are two switches on the PowerBoard one switches the ARGB on or off and the other switches the UV on or off.

Touch sensing Power Button.

Extra Power and Reset Buttons.

PowerBoard LED on/off switch.

PowerBoard 2.5" SATA 3.0 6Gb/s Direct Mount x1.
Cables: PowerBoard Linking Cables Standard Set: 24pin x1. 8pin EPS x2. 8pin PCIE x3. 18AWG Black Headshrinkless Sleeve.
PWM Female to Female 50cm Black Sleeved x1.
ARGB Female to Female 50cm Black Sleeved x1.
Touch Power Button and extra Power and Reset Button Cables 20cm x4.
LED Strips: x2 50cm ARGB LED Strips with 50cm cables. (Attach to case panels on specific mounting points for front and top panel glow).
Motherboard Form Factor: ATX, Mini-DTX, Mini-ITX.
Expansion Slots: x7.
Case Form Factor: Mid Tower.
Package Dimensions: L: 640mm W: 620mm H: 110mm (Case is flat packed and requires partial assembly).
Package Weight: 14kg.
Case Dimensions: L: 486mm H: 528mm W: 245mm.
Case Weight: 12kg.
Storage: 7x 2.5". x2 are on top of the PSU shroud and cannot be used when the GPUs are vertically mounted. x4 are inside of the PSU Shroud. x1 is on the PowerBoard behind the PSU.
Radiators: 360mm x 40mm with x1 set of standard 25mm fans.
Maximum GPU Length: 410mm with radiator installed.
Maximum GPU Height: 170mm in standard orientation. Unlimited in vertical orientation.
Maximum CPU Cooler Height: 170mm.
Maximum PSU Length: 220mm (Space allowed for cables inside of PSU shroud).
Front Panel I/O: No Front I/O. Vandal Switch 16mm white LED.
Vertical GPU Mount: x2 with 3 slot (60mm) spacing. x1 is included. 2nd Vertical GPU Mount Available Separately [Here](#). Riser cable not included, compatible with Linkup PCIE 4.0 Riser Cables.
Materials: 6061 Aluminum Anodized. Cast Acrylic. Stainless Steel. PCB.
Manufacturing Process: CNC Mill, CNC Lathe, CNC Router, PCB.
Assembly: Distribution Plate Assembled by Hand. Metal Components need to be assembled and attached to the distribution plate by the customer.
Testing/Validation: All Distribution Plates are factory pressure tested and precise fastener tension is applied.

Included Items

Case Components:

Distribution Plate with PowerBoard: x1
Clear Cast Acrylic Side Panel Window: x1.
Case Panel Set: x16 pieces.
LED Diffusors x2.
Top corner acrylic cover with logo.
Vertical GPU Mount: x1. (Includes Vertical GPU Bracket and Angle Mount).

Cables:

PowerBoard Linking Cables Standard Set: 24pin x1. 8pin EPS x2. 8pin PCIE x3. 18AWG Black Headshrinkless Sleeve.
PWM Female to Female 50cm Black Sleeved x1.
ARGB Female to Female 50cm Black Sleeved x1.
Touch Power Button and extra Power and Reset Button Cables 20cm x4.

Accessories:

Hex Keys: M3: x1. M4: x1. M6: x1.
Microfiber Cloth: x1.
Stop Fittings: x2.
5v ARGB LED Strip 50cm: x2.

Additional Information

Brand	Singularity Computers
SKU	SC-SINT-M-S
Weight	30.0000
Color	Silver
Chassis Form Factor	Mid-Tower
Side Panel	Window
Motherboard Support	ATX, Micro ATX, Mini DTX, Mini ITX
Material	Acrylic, Stainless Steel
PSU Wattage	No PSU
Vendor SKU/EAN	9351182003725

