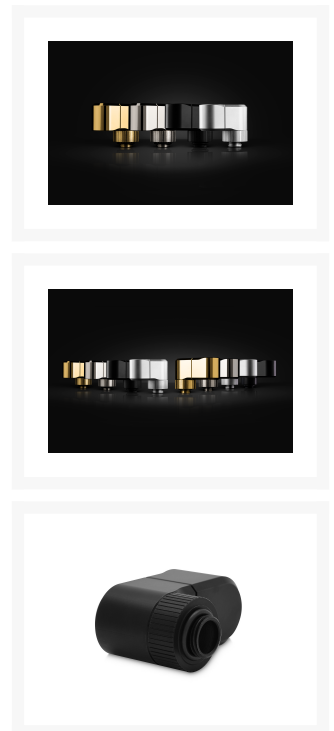




EK-Quantum Torque Double Rotary Offset 28 - Black

\$28.99

Product Images





Short Description

EK-Quantum Torque Double Rotary Offset 28 - Black is a premium revolvable male+female threaded 28mm offset adapter fitting with two separate joints, each with its own rotating mechanism.

Description

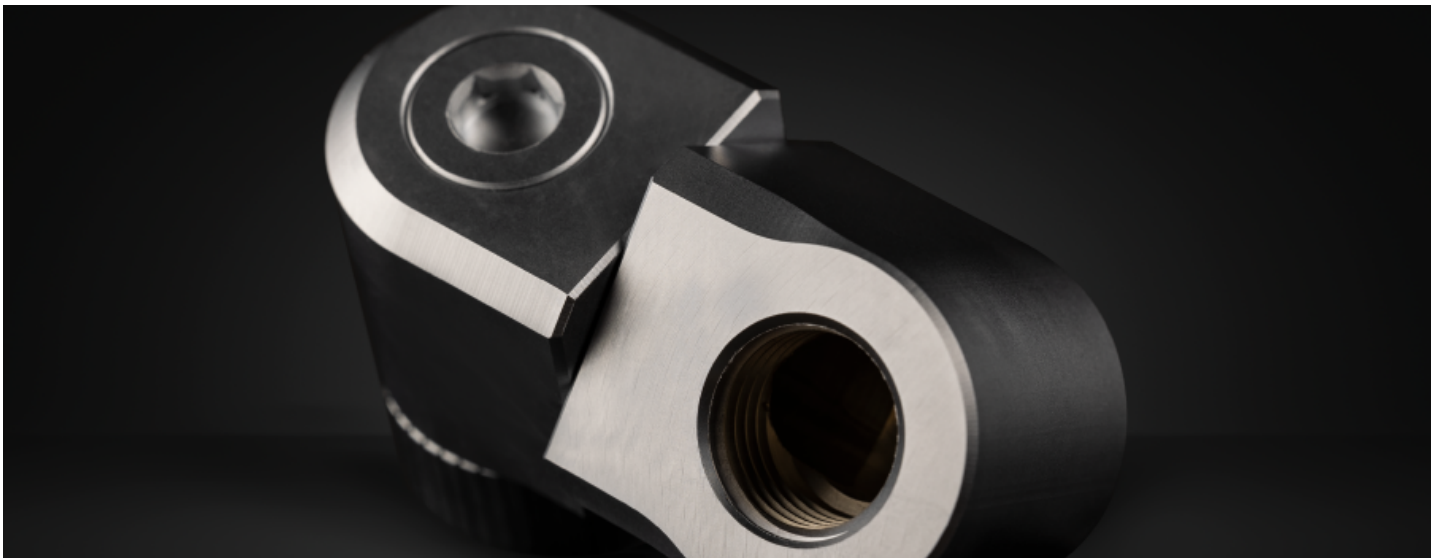
Details

EK-Quantum Torque Double Rotary Offset 28 - Black is a premium revolvable male+female threaded 28mm offset adapter fitting with two separate joints, each with its own rotating mechanism. It is commonly used to offset two parallel or perpendicular tubes and is best used on GPU and CPU water blocks to align the tube directly with the distribution plate port. Aesthetically, it perfectly matches the fittings and adapters from the EK-Quantum Torque series. These fittings effectively replace the following three products – the rotaries angled 45 and 90, and a 7 MF extender.



Features

Made from CNC machined brass with a satin black finish. Sealed with quality NBR O-rings. Unlike EK's previous Rotary Offsets for 7 and 14mm, these fittings consist of two pieces and feature a rotating element in the middle as well. This enables them to not only offset the port but also change the angle. There are tactile clicks at every 45-degree turn to easily position the fitting the way your build requires, but the offset can also be stopped and used at any angle.



It can be tightened down from the top using a hex key for added convenience or in case the regular knurling is not accessible.



The fittings are quite useful for perfectly aligning hard tubing to a distro plate when you want to achieve parallel tube runs from the GPU or the CPU. Being specifically designed according to the [EK-Matrix7 standard](#), they complement the varying height of Vector² GPU water blocks and allow them to route perfectly with a straight run into the distribution plate.



EK-Quantum Torque series products received the prestigious iF Design Award. A robust and industrial aesthetic sets the Torque family apart by highlighting the precise manufacturing processes used to create them. In addition, enthusiasts can add a unique color ring to give a personal accent to the fitting line. The Torque family of fittings offers a secure and modular system of connections between liquid cooling components and tubing within a PC. Quantum Torque series products cover angled adapters, rotary and static extenders, splitters, G1/4" plugs, drain valves, fittings, and much more.

Specifications

Technical data:

- Threading: 2 x G1/4" (Male-Female)
- Thread length: 4.5mm

- Material: Brass
- Installed height: 33mm
- Finish: Black
- Offset: 28mm
- Outer Diameter: 23mm

Made in Europe

Additional Info

	Black
	G1/4

Additional Information

Brand	EK Waterblocks
SKU	EK-QUANT-TORQUE-DB-ROTOFF28-BK
Weight	0.3000
Special Order	No
Fitting Type	Rotary
Vendor SKU/EAN	3831109893463
Color	Black

