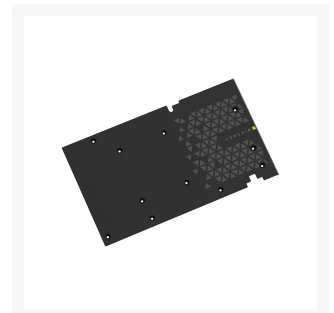
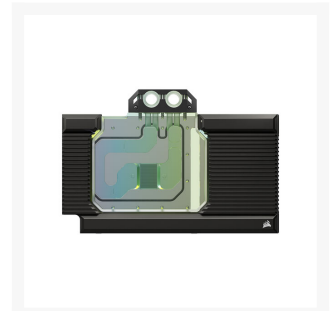
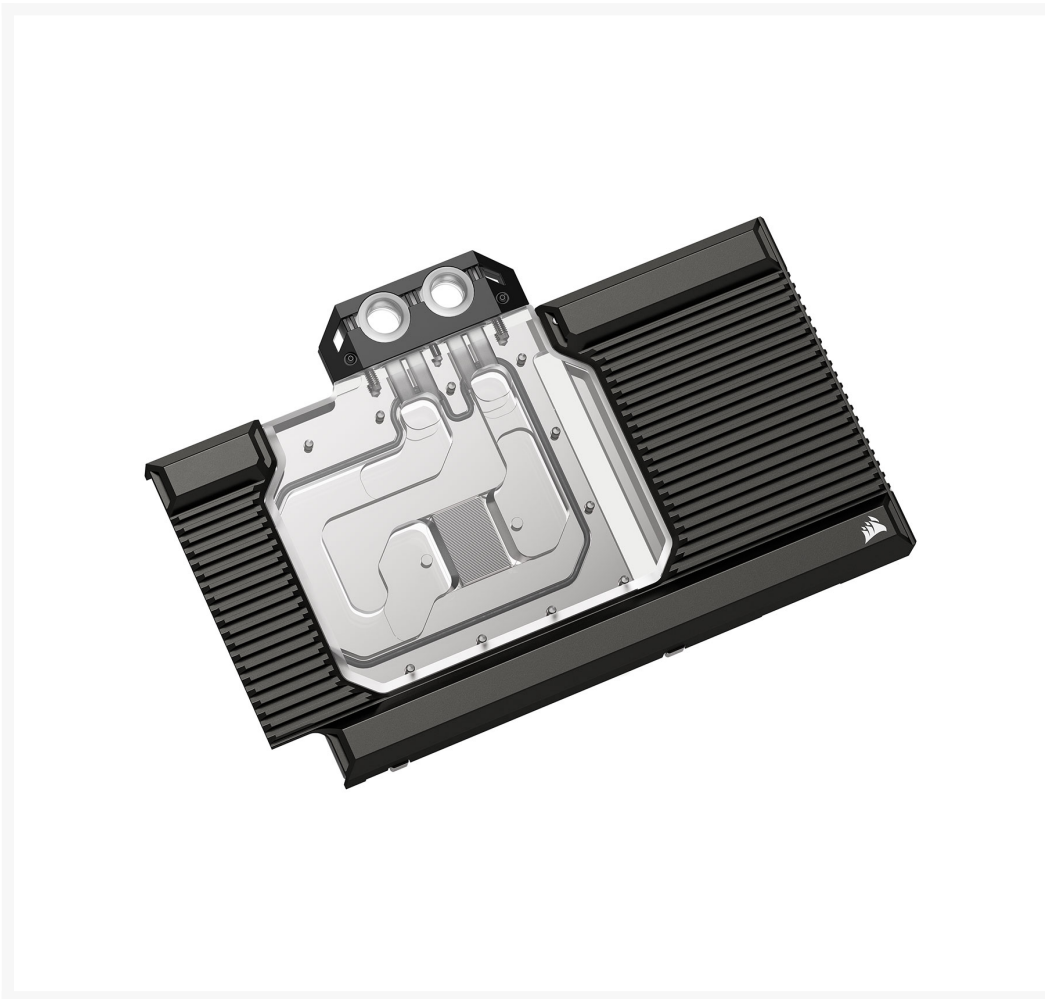




# Corsair Hydro X Series XG7 RGB 40-SERIES GPU Water Block (4080 STRIX/TUF)

\$224.99

## Product Images



## Short Description

---

### Unlock Your GPU's True Potential

The CORSAIR XG7 RGB RTX™ 4080 ROG STRIX / TUF GAMING GPU Water Block is a total conversion copper water block for your ASUS® ROG STRIX or TUF GAMING GeForce RTX™ 4080 graphics card.

## Description

---

### Corsair Hydro X Series XG7 RGB RX-Series GPU Water Block For Select ASUS GeForce RTX™ 4080 Cards

#### Unlock Your GPU's True Potential

The CORSAIR XG7 RGB RTX™ 4080 ROG STRIX / TUF GAMING GPU Water Block is a total conversion copper water block for your ASUS® ROG STRIX or TUF GAMING GeForce RTX™ 4080 graphics card.

- Maintain high clock speeds with custom cooling
  - Total conversion block cools all your GPU's components
  - Premium CNC machined nickel-plated copper construction
  - DOMINATOR PLATINUM style manifold
  - Included full-length aluminum casing and backplate
  - 16x Individually addressable RGB LEDs
  - Acrylic flow path for maximum coolant visibility
  - 3 Year Corsair Limited Warranty
- 
- 50+ Cold Plate Fins
  - Easy installation with pre-applied TIM and pads
  - Combine with a CORSAIR iCUE controller for CORSAIR iCUE software control
  - Included 5V ARGB adapter cable for motherboard ARGB lighting control
  - Step-by-step installation guide
  - Industry Standard G1/4" threads

## Features

---

It has CNC-milled nickel-plated copper construction and high-density cooling fins positioned over the GPU maximize heat transfer and surface area, with full-length aluminum casing and an included backplate. The transparent flow path and discrete RGB lighting puts your graphics card on full display.

Combine with a CORSAIR iCUE controller and the powerful CORSAIR iCUE software to customize the lighting to your mood or sync it with your games. With pre-applied thermal material, standard G1/4 inch threads and easy to follow step-by-step instructions, it's never been easier to custom cool your GPU.

- **Unlock Your GeForce RTX™ 40-Series GPU's True Potential:**  
Unlock your GPU's true potential with custom cooling for your graphics card
- **Precision CNC Cut Nickel-Plated Copper Construction:**  
More than 50 high-density cooling fins positioned over the GPU maximize thermal transfer and surface

- area, for lower temperatures and increased maximum performance
- Total Conversion Design:  
Cools not just the GPU, but your graphics card's memory and VRM as well, all clad in a clean and stylish aluminum casing
- Heighten Your System's Style:  
Constructed with a unique manifold inspired by the iconic and refined look of CORSAIR DOMINATOR PLATINUM memory
- Full-Length Aluminum Backplate:  
Completely covers your graphics card's PCB and protects sensitive components
- Built-In RGB Lighting:  
16 Individually addressable RGB LEDs integrated directly into the GPU block provide vibrant customizable RGB lighting when combined with a CORSAIR iCUE Controller (sold separately) and Free CORSAIR iCUE software
- Fully Transparent Flow Path:  
An acrylic top plate and transparent flow path puts your coolant and RGB lighting on display
- Pre-Applied Thermal Material and Thermal Pads:  
Pre-applied thermal material and thermal pads make installation quicker and easier
- Unite Your Setup:  
Combine with a CORSAIR RGB lighting controller and powerful CORSAIR iCUE software for customization and synchronization of RGB lighting across all your CORSAIR RGB products
- 5V ARGB Motherboard Adapter Cable Included:  
Conveniently control lighting directly via a compatible motherboard 5V ARGB connector
- Step-by-Step Installation Guide:  
Takes the mystery out of custom cooling, with easy-to-follow video tutorials
- Standard G1/4 inch Threads:  
Universal fitting compatibility for inlet/outlet ports

## Compatibility

### GPU Compatibility:

[ASUS ROG STRIX RTX™ 4080 Video Cards](#)

[ASUS TUF RTX™ 4080 Video Cards](#)

### Corsair iCUE ARGB LED Lighting Controllers:

[Corsair Commander PRO](#)

[Corsair Lighting Node PRO](#)

[Corsair iCUE Commander Core XT](#)

## Specifications

<b>Product</b>	Hydro X Series XG7 RGB GPU Water Block For ASUS ROG STRIX & TUF GAMING RTX™ 4080 Video Cards
----------------	--

<b>Model number</b>	CX-9020024-WW
<b>Colour</b>	Black
<b>Cold Plate Fins</b>	50+ Cooling Fins
<b>Port Thread</b>	G1/4" BSPP
<b>Thermal Paste</b>	Pre-Applied Thermal Paste and Pads
<b>Cold Plate Material</b>	Nickel-Plated Copper
<b>Fluid Chamber Material</b>	PMMA
<b>Material Compatibility</b>	Only mix with other Copper / Brass Products
<b>LED Lighting</b>	16x ARGB LEDs
<b>Corsair iCUE Controllers</b>	<a href="#">Corsair Commander PRO</a> <a href="#">Corsair Lighting Node PRO</a> <a href="#">Corsair iCUE Commander Core XT</a>
<b>Operating Temperature</b>	Coolant: Up to 60° C
<b>Dimensions</b>	232 x 157 x 25.5mm
<b>Weight</b>	1.36 kg

## Package Contents

- Corsair Hydro X Series XG7 RGB RX-Series GPU Water Block, For GeForce ROG STRIX / TUF GAMING RTX™ 4080 Cards
- 1x XG7 GPU Water Block
- 1x Backplate
- 2x G1/4 inch Stop Plugs
- 1x Plug Tool
- 1x RGB Adapter Cable

- Mounting Screw Kit

## Additional Information

---

Brand	Corsair
SKU	CX-9020024-WW
Weight	3.5000
Color	Black
Vga	ROG Strix and ASUS TUF RTX 4080
Block GPU Type	Nvidia
Block Style	Nickel-Plexi
Vendor SKU/EAN	0840006698951

