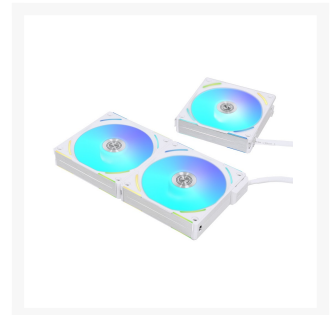
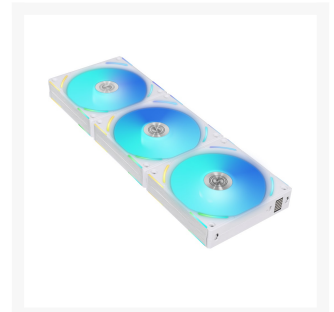
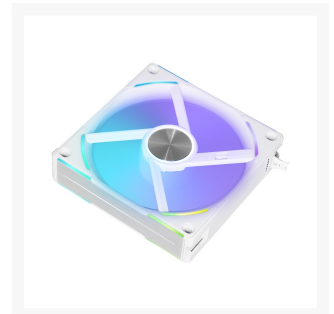


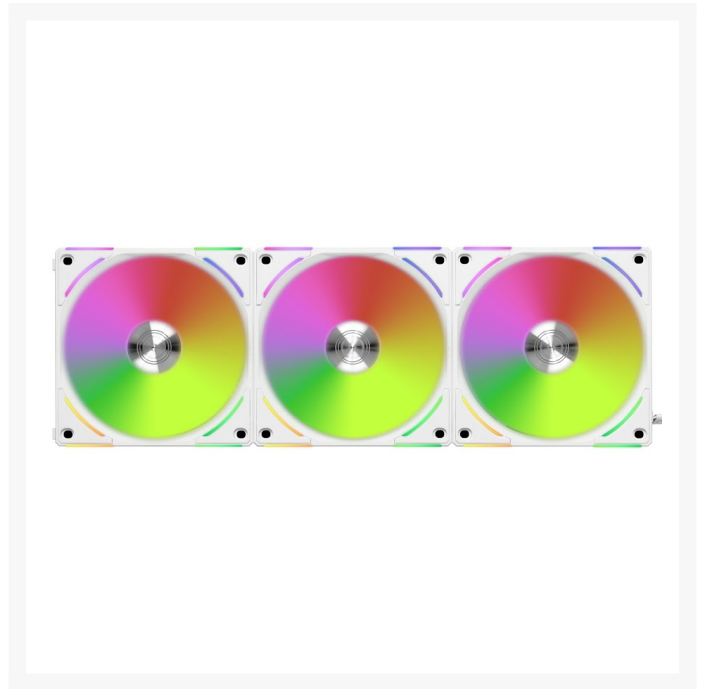


LIAN LI UNI Fan AL120 V2 RGB White Single Fan Pack without controller

\$27.99

Product Images





Short Description

LIAN LI UNI Fan AL120 V2 RGB White
Single Fan Pack without controller

Description

The Lian Li AL120 V2 Uni Fan ARGB PWM 120mm White is a modular fan that can be used by itself or connected with up to 6 other fans. It features a daisy chain interlocking mechanism, pin-to-pin contact point for receiving power and signal, fluid dynamic fan bearing, and a controllable fan speed range on 250-2000 RPM via the L-connect software.

- Improved daisy chain design to connect 2 clusters of fans.
- AL120 V2 fan frame thickness is 28mm to provide 20% improved airflow compared to V1.
- Removable interlocking keys to provide better radiator clearance.
- Start/stop fan RPM support for a quieter environment.
- New corner lighting visible from all sides
- Only one cable is required for each fan cluster when using the provided new UNI HUB to control lighting effects via L-Connect 3.

Features





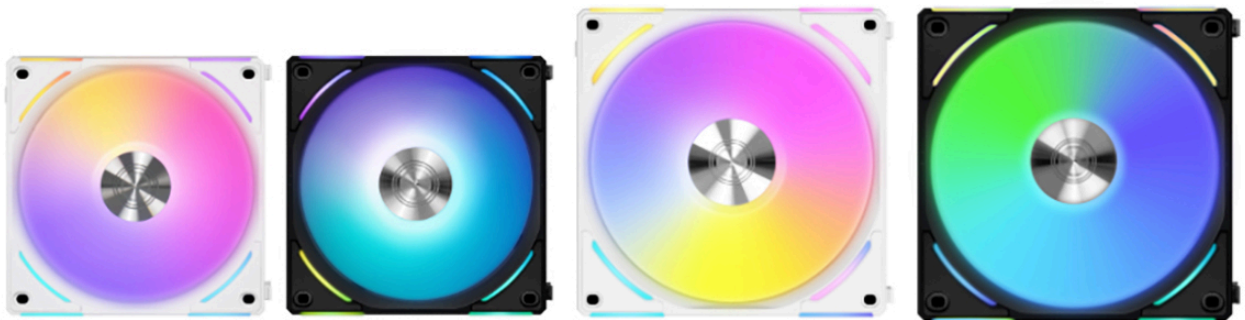
UNI FAN AL V2
COOL IN STYLE



SLIDE IN DAISY-CHAIN STYLE **IMPROVED PERFORMANCE** **SOPHISTICATE LIGHTING EFFECTS**

CABLELESS WITH CONTROLLER **START/ STOP FAN** **L-CONNECT 3 SOFTWARE**

AVAILABLE IN TWO SIZES AND TWO COLORS



WHITE

BLACK

WHITE

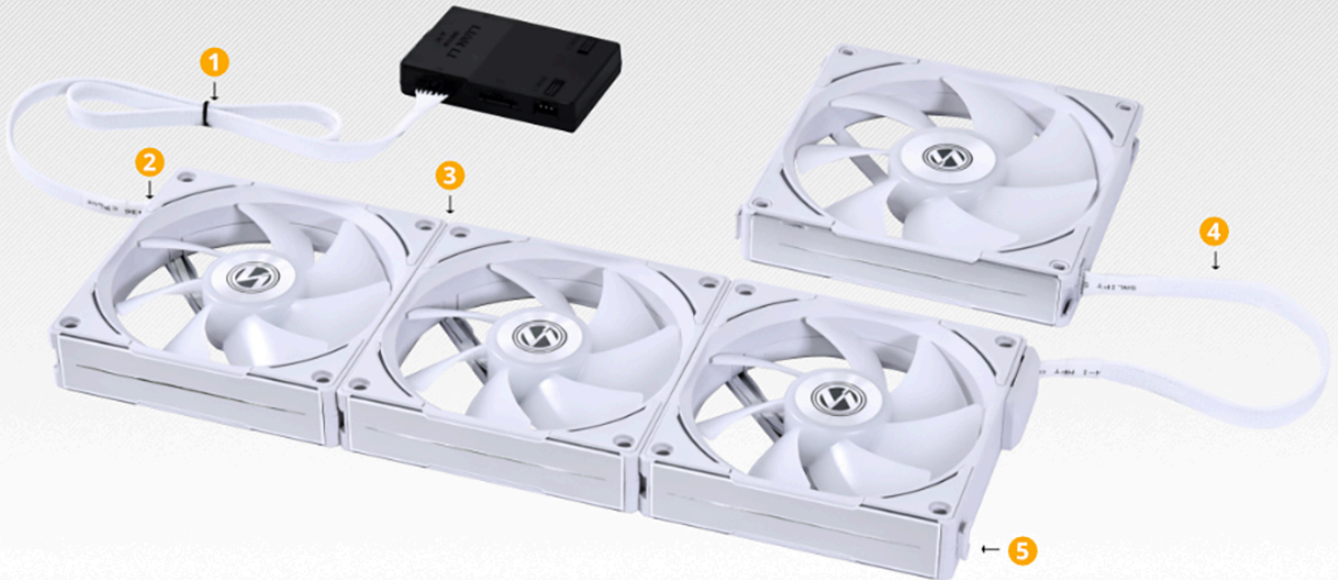
BLACK

AL120 V2

AL140 V2

UPGRADED MODULARITY

UNI FAN AL V2 features an interlocking system to connect up to 6 fans in two clusters to a single controller port, making fans installation and cable management a simple job.



1 SINGLE CABLE TO CONTROLLER
Combo of power and LED cable, reduce cable numbers.



2 PLUG-IN POWER CABLE MODULE
Flush fan frame, reduce clearance issues.



3 SLIDE-IN MECHANISM
Pin-to-pad contact, daisy-chain the fan clusters simply.

4 EXTENSION CABLE
Bridge 2 fan cluster, keep as minor cable as possible.



5 REMOVABLE KEY
Remove the interlocking key to improving compatibility.

THICKER YET EASY TO INSTALL

The UNI FAN AL120 V2 has been amended to a slightly thicker frame of 28mm, and implements indented screw holes to fit standard 25mm long screws for installation.



Note: The optional 33.8mm long screw set is provided for those who need to mount the UNI FAN AL120 V2 through a fan bracket used in a push-pull rad/fan combo.

ULTIMATE PERFORMANCE ARGB FAN

Running at peak performance while keeping low noise levels, the UNI FAN AL120 V2 is the best-performing ARGB fan within the entire UNI FAN lineup.



MODEL	AIRFLOW	STATIC PRESSURE	NOISE	SPEED
AL120 V1	64.5 CFM	2.62 mmH2O	28.3 dB(A)	800-1900 RPM
AL120 V2	77.3 CFM	2.97 mmH2O	28.7 dB(A)	0, 250-2000 RPM
SL120 V2	64.5 CFM	2.59 mmH2O	29.2 dB(A)	0, 250-2000 RPM
SLIN120	61.3 CFM	2.66 mmH2O	29.0 dB(A)	0, 200-2100 RPM

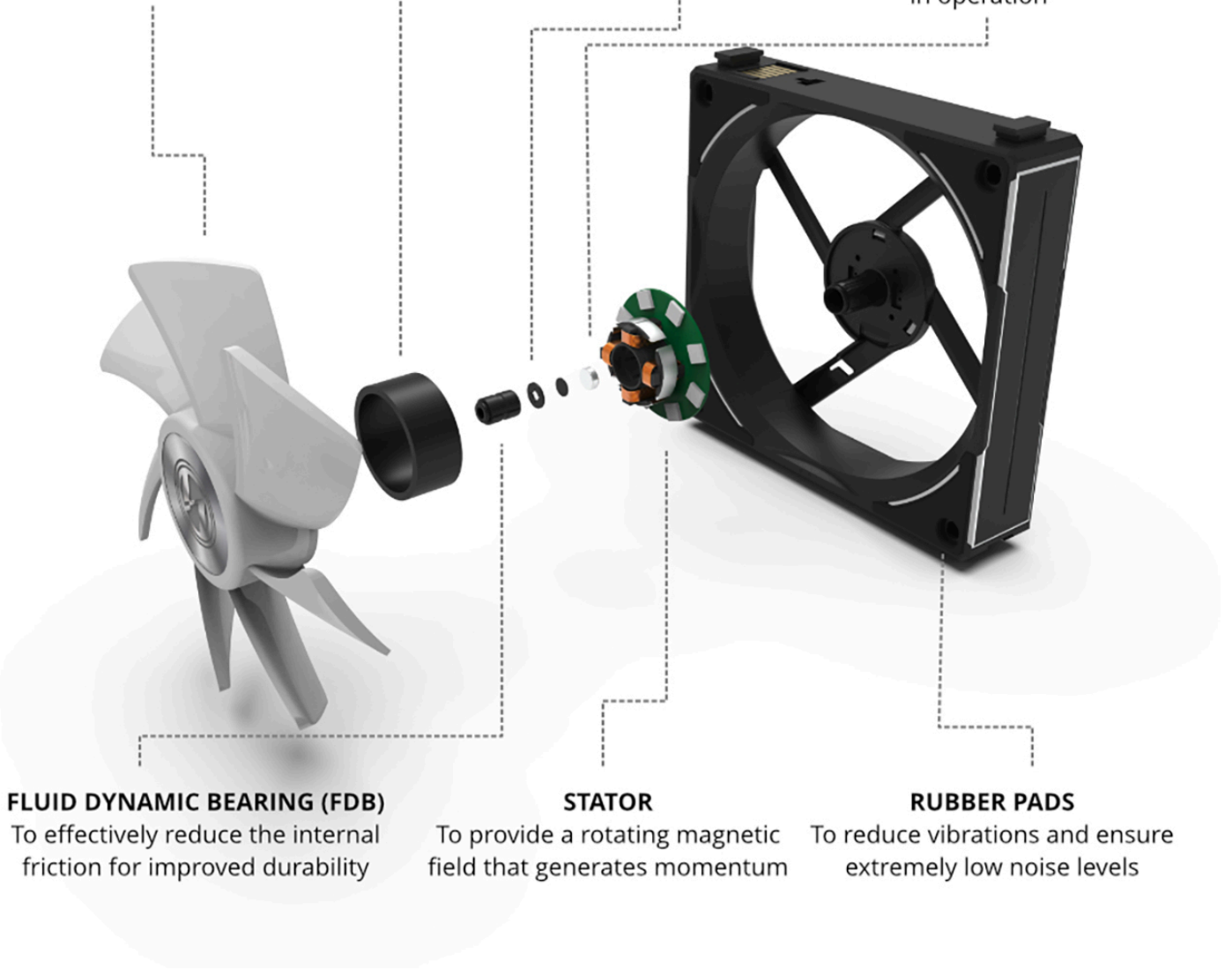
DURABLE DESIGN

THICKER IMPELLER
Increased thickness to 28mm for better efficiency

MAGNETIC FRAME
To provide extra support for fan blades

CIRCLIP
To secure the fan blades in place

EXTRA MAGNETIC FORCE
To support the fan blades and reduce vibration levels, thus ensuring low noise levels while in operation



FLUID DYNAMIC BEARING (FDB)
To effectively reduce the internal friction for improved durability

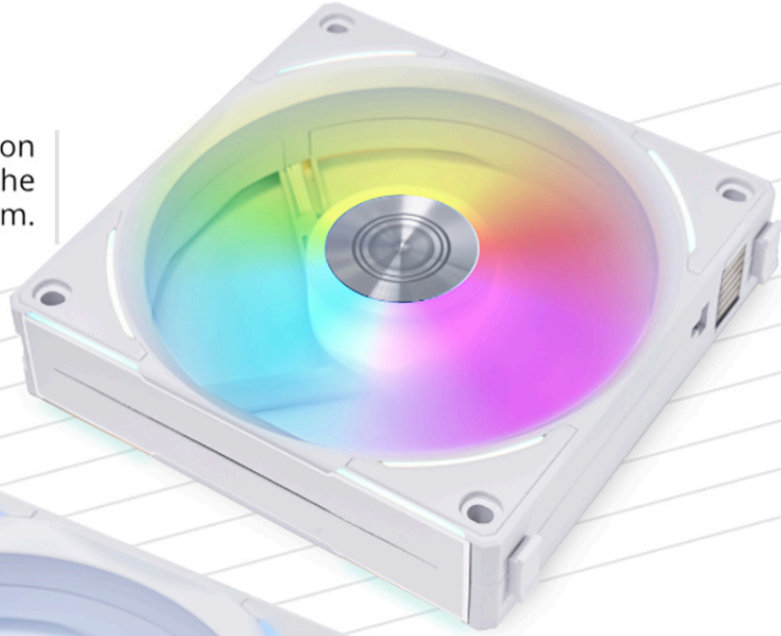
STATOR
To provide a rotating magnetic field that generates momentum

RUBBER PADS
To reduce vibrations and ensure extremely low noise levels

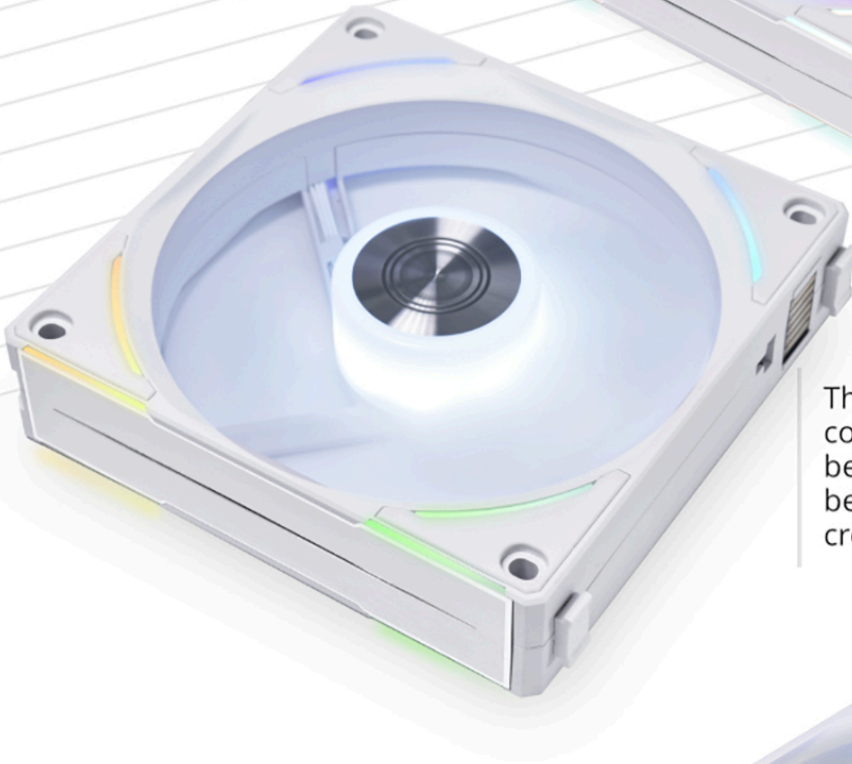
DAZZLING FROM ALL ANGLES

UNI FAN ALV2 has comprehensive lighting all around with independent control of the effects at the fan blades and fan frame, and combined lighting effects.

Sophisticated lighting on the fan blade glows the whole system.



The fine LED strips at the four corners of the fan frame and beside the aluminum sides can be set in different colors, creating an elegant look.



A ring of RGB is visible at the rear side, keeping it attractive no matter as intake or exhaust.



MORE LIGHTING EFFECT CHOICES

New lighting effects have been developed for the updated version of the AL fans, offering more lighting options.



Colorful City



Render

CONTINUOUS LIGHTING EFFECTS

A merge function is available to allow lighting effects to flow not only across a single cluster but across the whole system.



→ → → → → **Tail Chasing** → → → → →

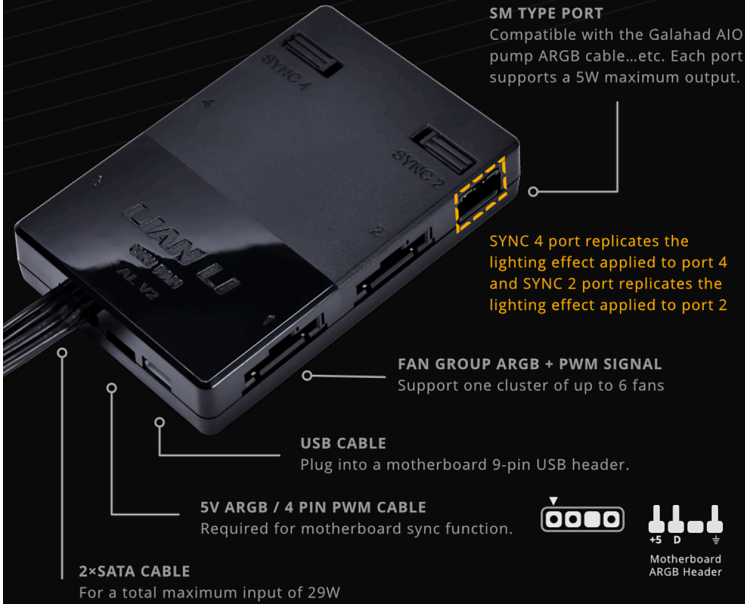
SIMPLE CONNECTION

2 ways to connect UNI FAN ALV2 fans, adapted to your personal needs.

1

UNI HUB - 16 FANS IN ONE GO

The included controller in the triple pack (also available separately) can support up to 16 fans and 2 SM-type connected devices to simplify cable management and provide efficient power to the fans.



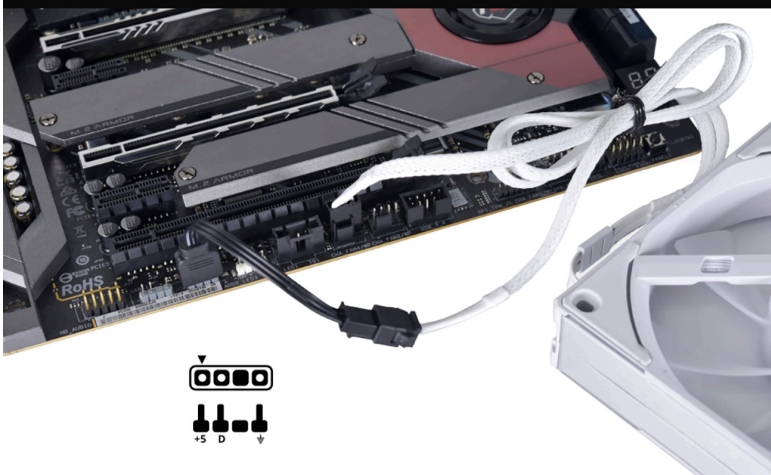
Main-SATA: Plug in all circumstances
Sub-SATA: Plug when connecting more than 12 fans or often set to white static color.

Note: Please lower the static white lighting effect's brightness to 75% when connecting more than 8 x140 or 11 x 120 AL V2 fans synchronized to the motherboard. Failing to do so may cause inaccurate colors.

2

DIRECT TO MOTHERBOARD

The single pack includes a cable module that features a 4-PIN PWM and a 3-PIN SM-type ARGB cable (3P to 3P 5V ARGB cable is included) to connect directly to the motherboard.



L-CONNECT 3 SOFTWARE TO CONTROL AL-V2 FANS



DOWNLOAD
L-Connect 3

Control and preview with precision the lighting effect of the AL-V2 fans with the new L-Connect interface.

Note: L-Connect 3 is only supported when connecting the fans to an ALV2 UNI HUB.



1 Choose to control lighting effects of fan blades/ edge of fan frame/ both together or set as merge mode

2 Set personalized color / brightness / speed / direction

INTELLIGENT START/ STOP FAN

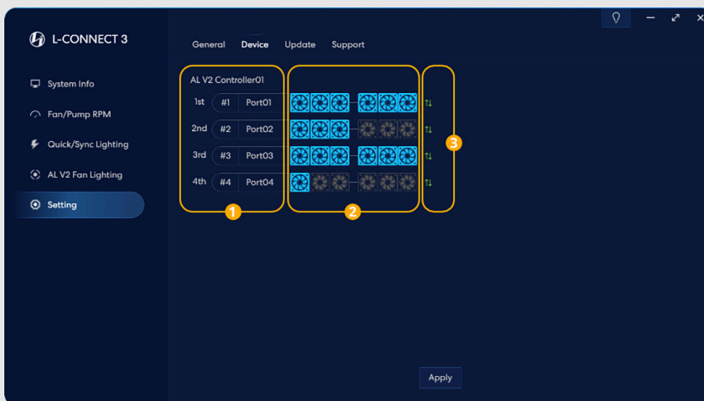


1 Select fan mode for each group

2 Turn on to stop fan operating at a set temperature

3 Customize real-time RPM curve

DEFINE THE ORDER



1 Define fan group name

2 Set fan quantity each group

3 Reorder the fan group order

PACKAGE CONTENT



AL120V2 Triple Pack Black



AL120V2 Triple Pack White



AL120V2 Single Pack Black



AL120V2 Single Pack White



AL140V2 Single Pack Black



AL140V2 Single Pack White

SPECIFICATIONS

PRODUCT NAME	UNI FAN AL120 V2				UNI FAN AL140 V2	
MODEL	AL120V2-3B	AL120V2-3W	AL120V2-1B	AL120V2-1W	AL140V2-1B	AL140V2-1 W
COLOR	Black	White	Black	White	Black	White
NUMBER OF FANS	3	3	1	1	1	1
CONTROLLER	Yes		No		No	
CONNECTOR TYPE	4 × 7-PIN (Power Cable) 2 × Extension Cable		1 × 4-PIN PWM + 3-PIN ARGB 1 × ARGB MB Adaptor		1 × 4-PIN PWM + 3-PIN ARGB 1 × ARGB MB Adaptor	
FAN DIMENSION	120 X 120 X 28 (mm)				140 X 140 X 25 (mm)	
MATERIAL	PBT/PC/Aluminum					
RATED VOLTAGE	DC 12V (FAN) & 5V (LED)					
FAN SPEED	0, 250–2000 RPM				0, 250–1600 RPM	
MAX. AIR PRESSURE	2.97 mmH2O (Maximum)				2.80 mmH2O (Maximum)	
MAX. AIRFLOW	77.3 CFM (Maximum)				81.6 CFM (Maximum)	
ACOUSTIC NOISE	28.7 dB(A) Max				26.8 dB(A) Max	
BEARING TYPE	Fluid Dynamic Bearing (FDB)					
OPERATE VOLTAGE	DC12V & 5V					
INPUT POWER	7.2W				6.32W	
WARRANTY	2 years					

Specifications

Specifications

Product Name	UNI FAN AL120 V2
--------------	------------------

Model	AL120V2-1W
Colour	White
Number of fans	1
Controller	No
Connector type	1 x 4-pin PWM + 3-pin ARGB 1 x ARGB MB Adapter
Fan dimension (W x H x D)	120 x 120 x 28mm
Material	PBT/PC/Aluminium
Rated voltage	DC 12V (Fan) & 5V (LED)
Fan speed	0, 250-2000 RM
Max. Air Pressure	2.97 mmH2O (Maximum)
Max. Airflow	77.3 CFM (Maximum)
Acoustic noise	28.7dB(A) Max
Bearing type	Fluid Dynamic Bearing (FDB)
Operate voltage	DC12V & 5V
Input power	7.2W

Additional Information

Brand	Lian-Li
SKU	UF-AL120V2-1W-D
Weight	2.0000
Color	White
Fan Dimensions	120mm
Fan Width	25mm
Fan RPM	2000
Fan CFM	58
Fan Noise (dB)	28

