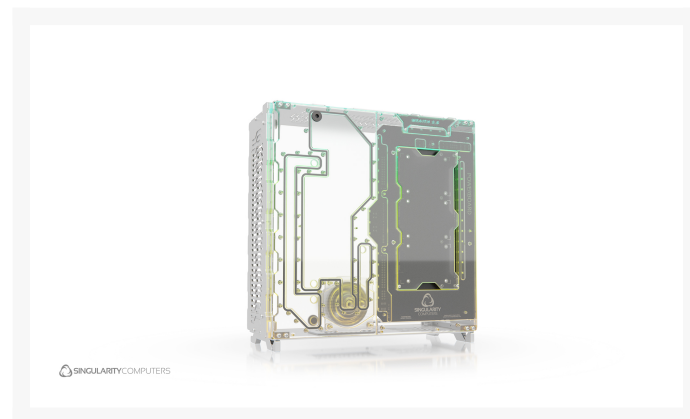
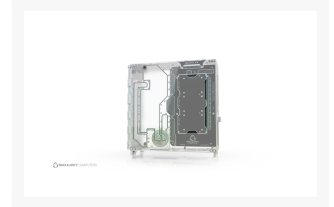
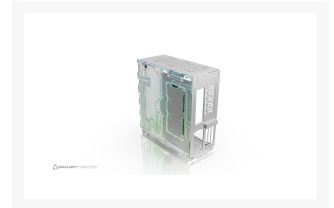


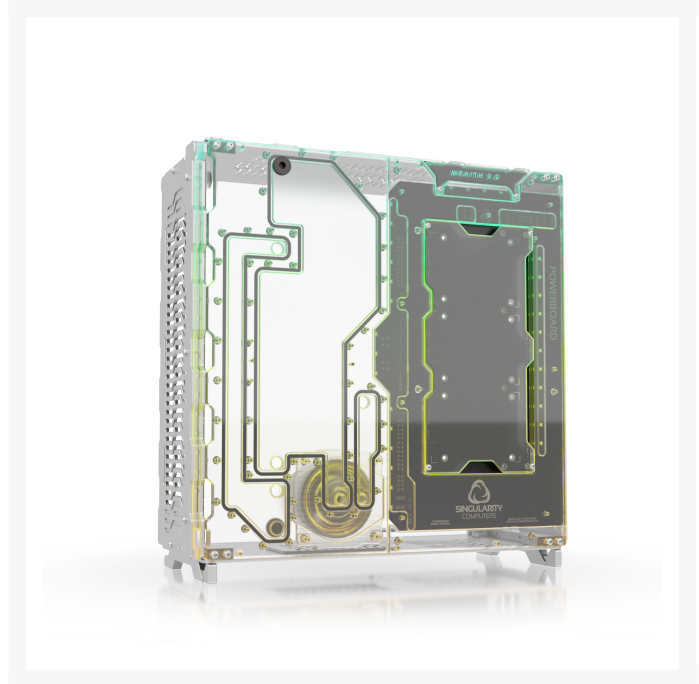
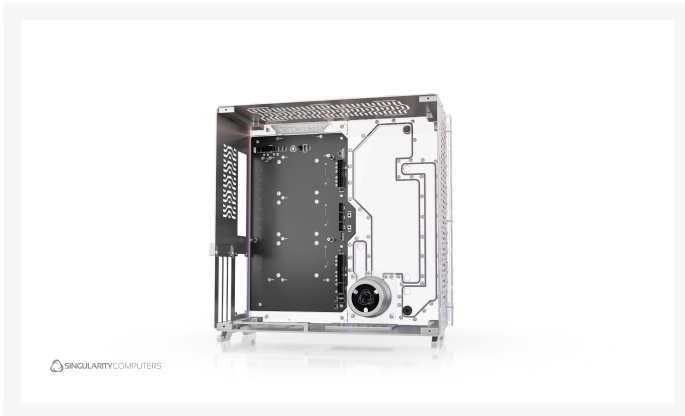


Singularity Wraith 3.0 Silver Case

\$799.00

Product Images





Short Description

Wraith 3.0 is a compact case capable of housing a high-end water cooled system. It fits ITX and DTX motherboards, SFX-L PSUs, and the largest GPUs. It can fit 2x 240mm radiators 30mm thick.

Description

Wraith 3.0 is a compact case capable of housing a high-end water cooled system. It fits ITX and DTX motherboards, SFX-L PSUs, and the largest GPUs. It can fit 2x 240mm radiators 30mm thick. The case is specifically designed for water-cooling with the distribution plate integrating many water-cooling components. Wraith 3.0 has a full redesign of the distribution plate with the addition of a PowerBoard. The case back plate is split in half with the PowerBoard on one side and the distribution plate on the other. The distribution plate integrates a reservoir, D5 pump top, D5 pump cover, fill and drain ports, and parts of the cooling loop. The PowerBoard integrates the 24pin, EPS, PWM, ARGB and has its own integrated ARGB lights to light up the reservoir area and the entire acrylic back plate.

Cables & Adaptors:

Custom hand built MDPC-X PowerBoard cables with a large range of sleeve colours available [here](#)

PowerBoard Cables are available [here](#)

SC Shift Adaptors are available [here](#)

Note: Motherboards with 90 degree 24pin, EPS and/or 6pin PCIE supplementary power connections will require SC Shift Adaptors for clean cable routing.

Note: D5 Pump not included.

Features

Integrated Liquid Cooling Features:

Reservoir, D5 Pump Top, D5 Pump Cover, Fill Port, Drain Port, parts of the cooling loop.

Reduced build time due to integration:

With the pump, reservoir, fill and drain ports and half of the water-cooling loop integrated there is less assembly to be done. Also, less fittings and tube are needed.

Integration Cost Component:

A large portion of the case cost is due to the integration; these are components you do not have to purchase for your build. The pump top, pump cover, reservoir, less fittings, and tube.

Compatibility:

Theoretically the more integration the less compatibility. For Wraiths integration each port was positioned based on an average of a vast range of components and build designs.

Integration & Optimization:

With the integration we did not just develop a case, we also developed all the integrated components. This meant that we could focus more on optimization than would normally be possible. The integrated loop routes in Wraith allow for more flow than 16mm tubes. The pump top was designed for the D5 pump, maximizing flow to and from the distribution plate. The reservoir was designed to remove air as quickly as possible making the loop easier to fill. The fill port is at the highest point on the back for the case and the drain point at the lowest point.

High End Components:

Despite its compact size Wraith 3.0 is designed to fit a high-end liquid cooled build. It can fit the largest high-end GPUs and the largest SFX-L PSUs. For the water-cooling system it can fit 2x 240mm radiators 30mm thick with a single set of fans and the D5 pump.

Radiator Adjustment:

The radiator mounting panels have a large range of adjustment to help with port alignment to the distribution plate.

Storage:

Wraith 2.0 has 4x 2.5" drive positions and 1x 3.5".

Design & Engineering

We are all experienced system builders at Singularity Computers having built high end water-cooled systems for over 15 years. Our approach to product development begins with a need for our own builds and so the origin is always function. From there we start to build ideas around this function and the aesthetics and everything else follows. The original ideas for our products came from years of building highly customized, high end water-cooled systems and trying to reduce the exceptionally long build times and complexity. Our approach to development is hands on, we are using our own products every day.

Manufacturing, Quality

Almost all components of Wraith are CNC machined from a solid block of material. There is no hidden or back side, and this also goes for the components being installed. Due to this we selected the most high-end materials manufacturing process. The Distribution Plate is machined on a CNC router built from thick sheets of cast acrylic. It is hand assembled with silicone gaskets and stainless-steel fasteners, and pressure tested. The metal components are machined with Extreme Precision from solid blocks of 6061 aluminum on a CNC mill then sand blasted and anodized.

Specifications

Water-cooling Integration:

Reservoir, Pump Top, Pump Cover, Fill Port, Drain Port, Parts of water-cooling loop.

Ports: x6 G1/4" BSPP. 1x Fill Port. 1x Drain Port.

Pump: (Not included): Compatible with all D5 pumps.

Electronics Integration:

Core Component Cables: 24pin x1. 8pin EPS x1.

Hubs: PWM: x4. ARGB: x8 (Single input for all).

LEDs: x26 Integrated ARGB 90-degree LEDs.

Extra Power and Reset Buttons.

PowerBoard LED on/off switch.

PowerBoard 2.5" SATA 3.0 6Gb/s Direct Mount x3.

Cables: PowerBoard Linking Cables Standard Set: 24pin x1. 8pin EPS x2. 18AWG Black Headshrinkless Sleeve.

Linking cables and PSU Side Cables available here: ([LINK HERE](#)).

Adaptors for motherboards with 90-degree connectors available here: ([LINK HERE](#)).

PWM Female to Female 50cm Black Sleeved x1.

ARGB Female to Female 50cm Black Sleeved x1.

LED Strips: x1 30cm ARGB LED Strip with 50cm cable.

Motherboard Form Factor: Mini-ITX, Mini-DTX.

Case Dimensions: 407mm x 407mm x 170mm.

Package Dimensions: 450mm x 500mm x 120mm.

Case Weight: 7kg.

Case Packaged Weight: 8kg.

Expansion Slots: x3.

Storage: 2.5" x9, 3.5" x1.

PSU Compatibility: SFX, SFX-L (maximum length available).

Radiator Top: 240mm x30mm.

Radiator Front: 240mm x30mm.

Maximum GPU Length: 300mm.

Maximum GPU Thickness: 3 slots.

Maximum GPU Width: Maximum length available.

Maximum CPU Cooler Height: 130mm

Front Panel I/O: Vandal Switch 16mm.

Vertical GPU Mount: Included Singularity Computers PCIE 4.0 Bracket and PCIE 4.0 Riser Cable.

Materials: 6061 Anodized Aluminum, Cast Acrylic, Stainless Steel.

Manufacturing Process: CNC Router, CNC Mill, CNC Lathe.

Included Items:

Case Components:

Distribution Plate with PowerBoard: x1
Clear Cast Acrylic Side Panel Window: x1.
Case Panel Set: x12 pieces.
LED Diffusor.
Protium 3.0 D5 Pump Cover.
Vertical GPU Mount with PCIE 4.0 Riser Cable.

Cables:

PowerBoard Linking Cables Standard Set: 24pin x1. 8pin EPS x2. 18AWG Black Headshrinkless Sleeve.
PWM Female to Female 50cm Black Sleeved x1.
ARGB Female to Female 50cm Black Sleeved x1.

Accessories:

Stop Fittings: x2.
5v ARGB LED Strip 30cm.

Additional Information

Brand	Singularity Computers
SKU	SC-W3-S
Weight	18.0000
Color	Silver
Chassis Form Factor	Mini-Tower
Side Panel	Window
Motherboard Support	Mini DTX, Mini ITX
Material	Acrylic, Aluminum, Stainless Steel
PSU Wattage	No PSU

