



BARROW Barrow Aluminum Alloy Water Cooling Dock EXWCA-240-WH

\$84.99

Product Images



Short Description

Looking for an external cooling dock with a sleek design? Look no further than this gem by Barrow.

Description

This item is the White version!

EXWCA

EXWCA External Water Cooling (EXWCA) / EXWCA External Water Cooling



EXWCA

- External cooling
- Multiple configurations
- Modular design
- Easy to install

Product Information

Model Number: EXWCA	Color: Black
Material: Aluminum	Dimensions: 214x144x144mm
Weight: 1.2kg	Power Consumption: 15W
Warranty: 3 years	Manufacturer: Corsair



Multiple models available

*EXWCA-240 can be installed with 240mm radiators, and *EXWCA-360 can be installed with 360mm radiators.



Internal super-large space for cable management

The interior of the cooling system is designed with a super-large open space, which can be used to connect the water pump, radiator, and tubing, and also to manage the power and data cables.



Integrated water pump and water tank

The cooling system is designed with an integrated water pump and water tank, which can be used to pump the water and store it for a long time.



Convenient tube routing design

The water pump and radiator are mounted at the bottom, which can be used to connect the water pump, radiator, and tubing, and also to manage the power and data cables.



SAVES UP LESS DESKTOP SPACE

The EXWCA external water cooling system is designed with a compact and modular design, which can be used to save desktop space.



RADIATOR SMALL BASE

The EXWCA external water cooling system is designed with a small base for the radiator, which can be used to save desktop space.



STANDARD SYNCROPS

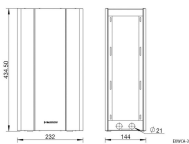
The EXWCA external water cooling system is designed with standard SyncroPS connectors, which can be used to connect the water pump, radiator, and tubing.



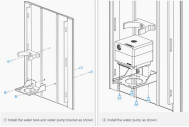
Ingredients list

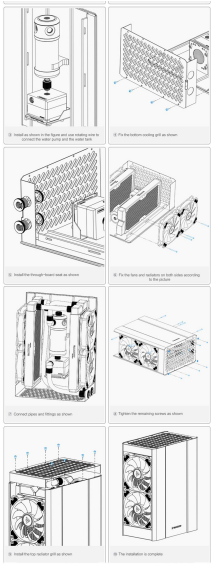
- Left case*1
- Right case*1
- Bottom cooling fan*1
- Top cooling fan*1
- DCC water pump*1
- Left and right tubes*1
- Water 40 Adapter Cable*1
- Accessories bag

Appearance size



Usage scenarios





BARROW



PNEXWCA

BARROW



BARROW



PNEXWCA

BARROW



PNEXWCA

BARROW



PNEXWCA

BARROW



PNEXWCA-02

BARROW



PNEXWCA-02

Additional Information

Brand	Barrow
SKU	EXWCA-240-WH
Weight	11.0000
Color	Black
Chassis Form Factor	MiniITX
Side Panel	No Window
Motherboard Support	Mini ITX
Material	Aluminum

