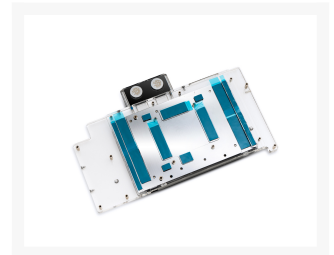
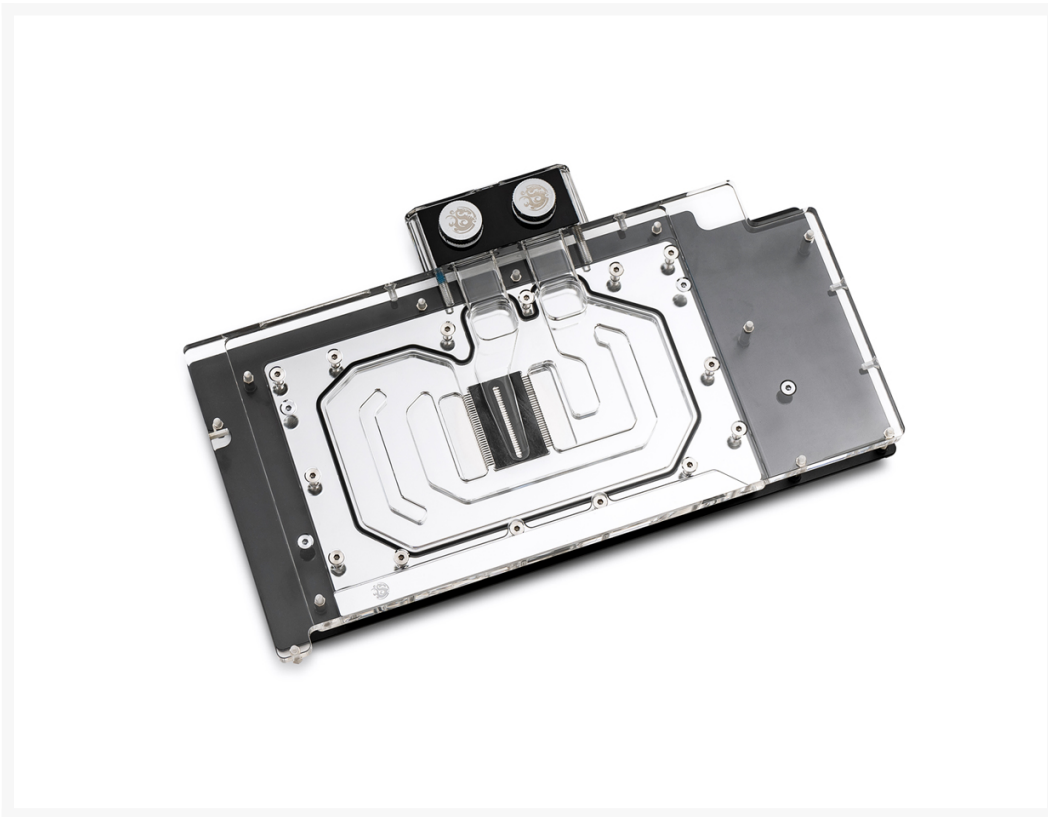


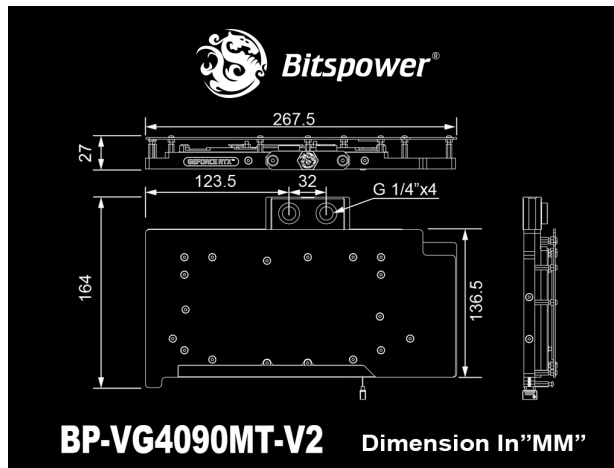


# Bitspower Nebula VGA Water Block for MSI GeForce RTX 4090 SUPRIM and GAMING series (incl. Improved backplate )

\$255.95

## Product Images





## Short Description

---

Bitspower Nebula VGA Water Block for MSI GeForce RTX 4090 SUPRIM and GAMING series, designed for the MSI GeForce RTX 4090 SUPRIM and GAMING series graphic cards, has been specifically engineered to provide the best temperature control while also keeping the aesthetic elegance that Bitspower is known for.

## Description

---

Bitspower Nebula VGA Water Block for MSI GeForce RTX 4090 SUPRIM and GAMING series, designed for the MSI GeForce RTX 4090 SUPRIM and GAMING series graphic cards, has been specifically engineered to provide the best temperature control while also keeping the aesthetic elegance that Bitspower is known for.

## Features

---

Covering the full length of the card, the water block is layered with a nickel and chromium plated copper base plate that is meticulously carved to allocate the most contact over the GPU and VRM area. Moreover, the water block is covered by an acrylic top layer equipped with a Bitspower Digital RGB LED strip that is sure to make your system look amazing. Bitspower Nebula VGA Water Block for GAMING series is sure to become the center of attention of your case with bright LEDs that are certified by ASUS AURA Sync, GIGABYTE RGB Fusion 2.0, MSI Mystic Light Sync, ASRock Polychrome, BIOSTAR VIVID LED DJ and Razer Chroma.

# Specifications

Thread : G1/4" x 4

LED Color : Digital RGB

LED Strip Management By Bitpower Digital RGB And Certified By ASUS AURA Sync, GIGABYTE RGB Fusion, MSI Mystic Light Sync, ASRock Polychrome, BIOSTAR VIVID LED DJ and Razer Chroma.



Included :

1set VGA Water Block for MSI GeForce RTX 4090 SUPRIM and GAMING series

1set of Mounting Screws/Accessories

Dimension(LxWxH) : 267.5x155x28.5 MM

Brand	Product
MSI	GeForce RTX 4090 GAMING series

If there aren't enough DRGB headers on the motherboard, you can use the "Bitpower Touchaqua Digital RGB Multi Function Controller", which is available for purchase via the link below:

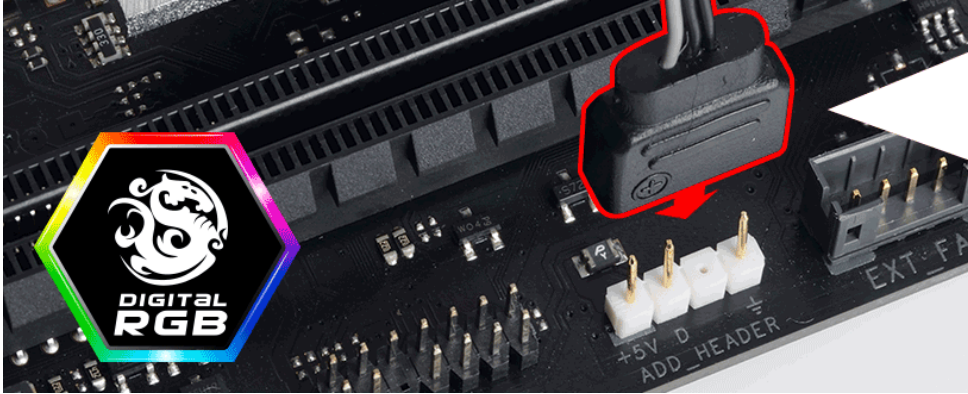
[https://shop.bitpower.com/index.php?route=product/product&product\\_id=7822](https://shop.bitpower.com/index.php?route=product/product&product_id=7822)



I wanna show off, but what's the support I'd need?

◆DRGB

The end of power supply is 3PIN. The sequence is +/D/↓ (some motherboards are shown +5V/D/↓, and the plug is like 4PIN but the 3rd PIN is empty). Please plug in the corresponding direction of motherboard, controller or the wire integrator for one to many. If choosing the motherboard as the power supply, the light effect can be synchronize with MB.



## Additional Information

Brand	Bitspower
SKU	BP-VG4090MT-V2
Weight	2.5000
Color	Clear
Vga	MSI GeForce RTX 4090 SUPRIM and GAMING
Block GPU Type	Nvidia
Block Style	Nickel-Plexi
Vendor SKU/EAN	4712914790514

