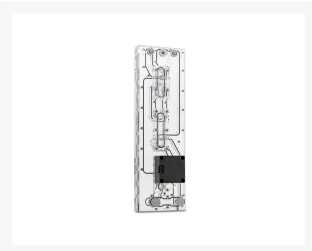
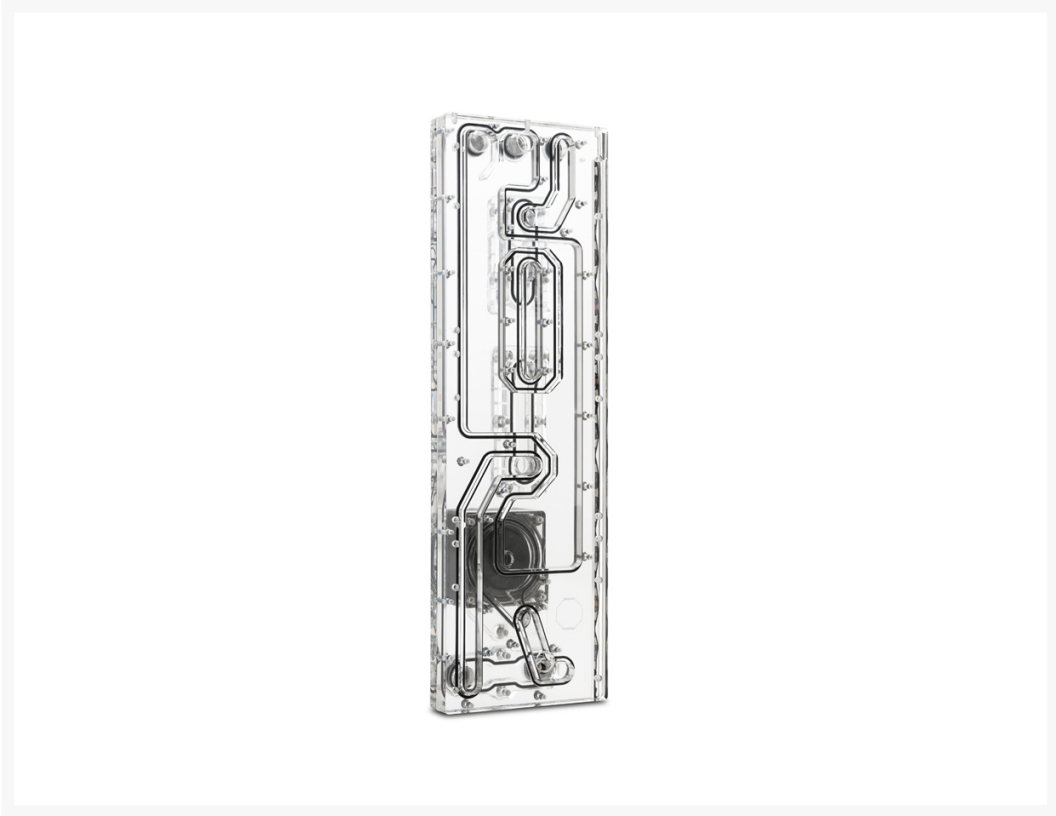


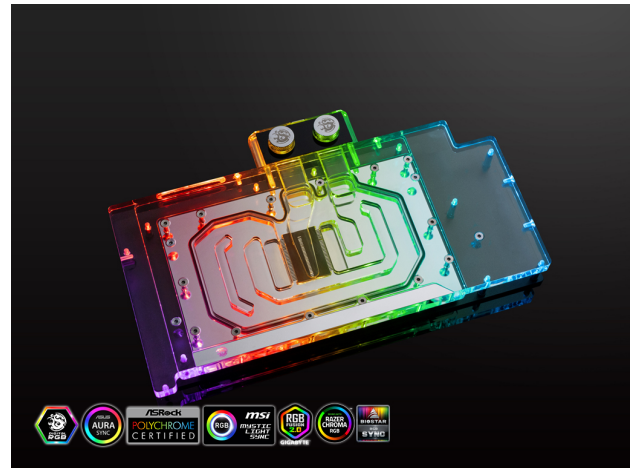
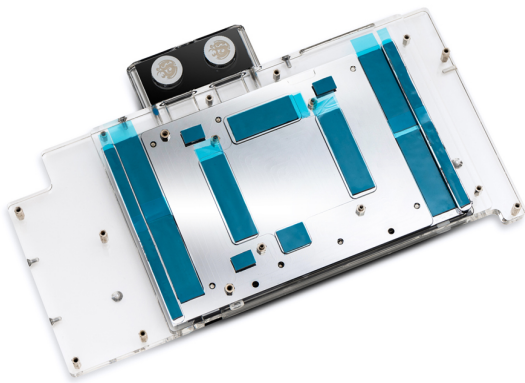
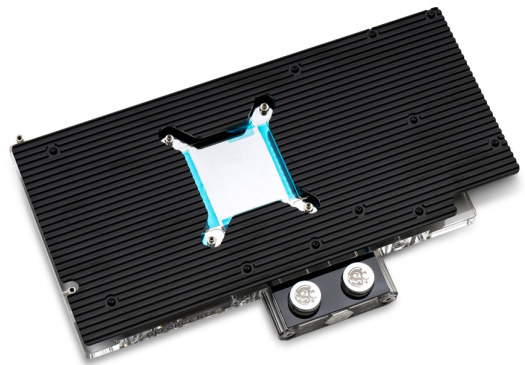
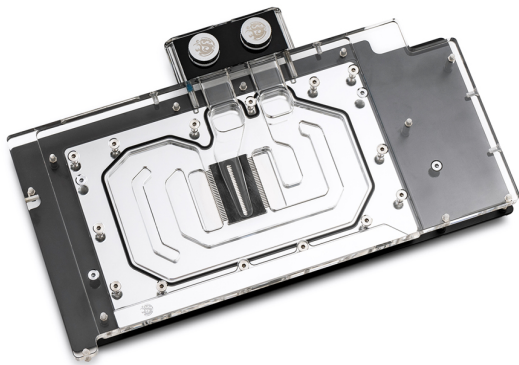


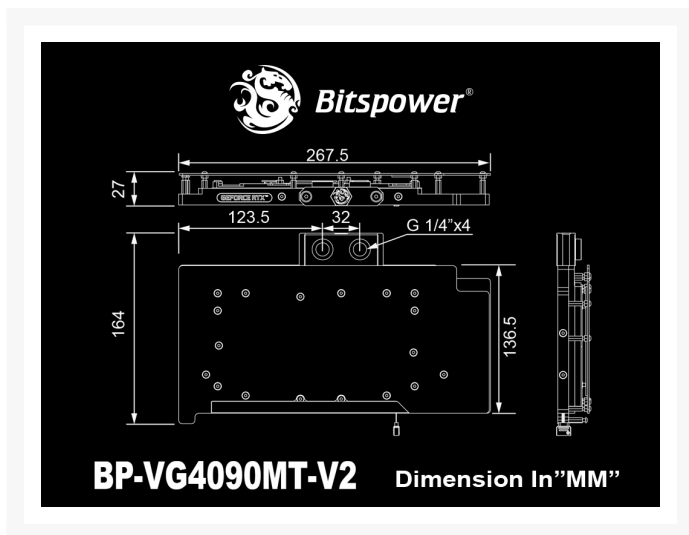
 **Bitspower Sedna GR701**  
for ASUS ROG HYPERION  
GR701 Case

\$270.95

Product Images







## Short Description

---

Bitspower Sedna GR701 for ASUS ROG HYPERION GR701 Case

## Description

---

Owners of ASUS ROG HYPERION GR701 Case, Bitspower has you covered for your reservoir and pump needs with the Bitspower Sedna GR701. While being a perfect fit within this large chassis, the reservoir's pump is dissimulated at the back in order to provide an unaltered look to your PC.

## Features

---

With novice modders in mind, Bitspower designed a reservoir that is easy to install while providing a professional look. Equipped with multiple water inlets and outlets to route the water from the radiator to the VGA than the CPU, this reservoirs also gives you more playroom for the graphics card location with a dual inlet/outlet designed to prevent having to bend more tubes and create a cleaner look to your loop.

The Bitspower Sedna GR701, equipped with Bitspower Digital RGB, is sure to become the center of attention of your case with bright LEDs that are certified by ASUS AURA Sync, GIGABYTE RGB Fusion 2.0, MSI Mystic Light Sync, ASRock Polychrome, BIOSTAR VIVID LED DJ and Razer Chroma.

## Specifications

---

LED Color : Digital RGB

LED Strip Management By Bitpower Digital RGB And Certified By ASUS AURA Sync, GIGABYTE RGB Fusion, MSI Mystic Light Sync, ASRock Polychrome, BIOSTAR VIVID LED DJ and Razer Chroma.



Included :

1set of BPTA-WDPGT701

1set of Drain Hose Set

1set of Mounting Screws/Accessories

Compatibility :

ASUS ROG HYPERION GR701 Case

Hercules Pump Specification:

Rated Voltage: 12V DC

Operation Voltage: 8 ~ 20V

Rated Current: 1.2 ± 10% A

Power consumption: 15W

Maximum flow: 11 ± 15% LPM

Maximum pump lift: 5.5 ± 0.5m

System Temperature: -25 ~ 80 °C

Noise Level: 40dBA

MTBF: 15,000 hours

PWM: Yes

Dimension(LxWxH) : 380x120x68.3 MM

If there aren't enough DRGB headers on the motherboard, you can use the "Bitpower Touchaqua Digital RGB Multi Function Controller", which is available for purchase via the link below:

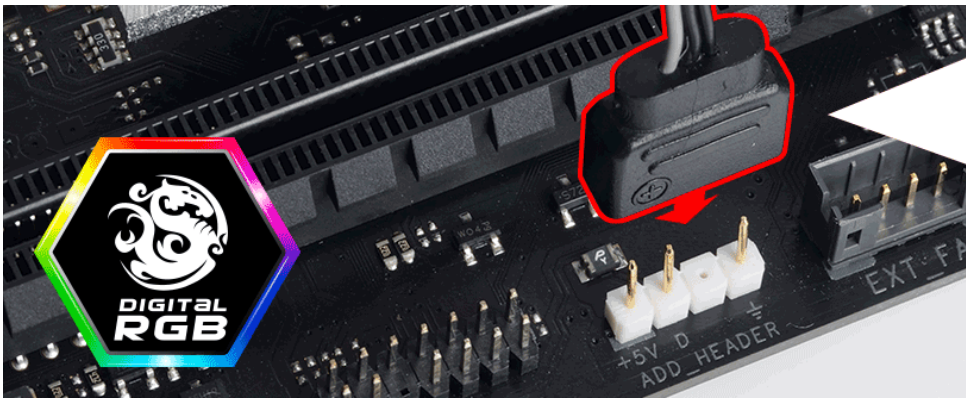
[https://shop.bitpower.com/index.php?route=product/product&product\\_id=7822](https://shop.bitpower.com/index.php?route=product/product&product_id=7822)



I wanna show off, but what's the support I'd need?

◆DRGB

The end of power supply is 3PIN. The sequence is +/D/↓ (some motherboards are shown +5V/D/↓, and the plug is like 4PIN but the 3rd PIN is empty). Please plug in the corresponding direction of motherboard, controller or the wire integrator for one to many. If choosing the motherboard as the power supply, the light effect can be synchronize with MB.



## Additional Information

Brand	Bitspower
SKU	BPTA-WDPGR701
Weight	8.0000
Color	Clear
Reservoir Type	Distribution plate
Pump Type	Hercules Pump
Vendor SKU/EAN	4712914790248

