

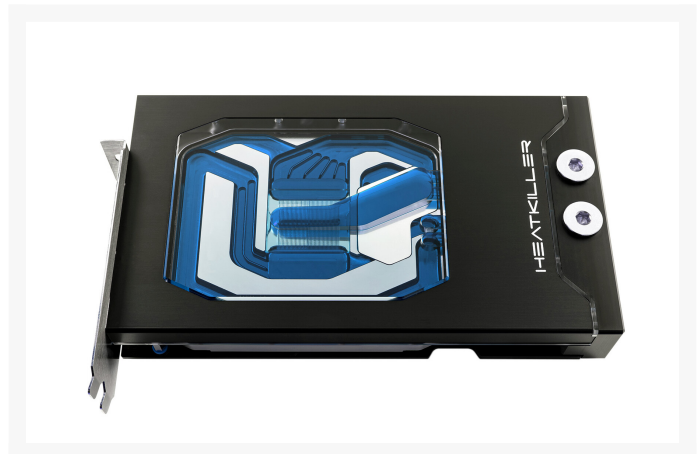
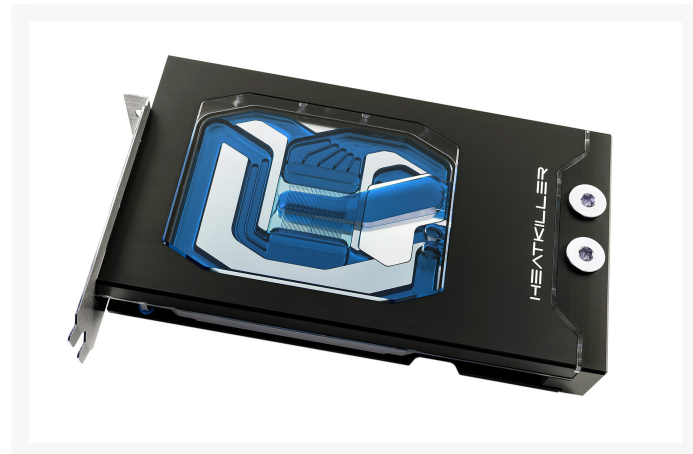
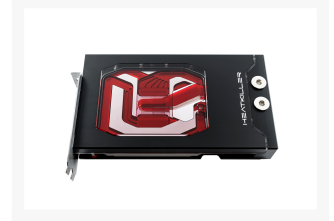
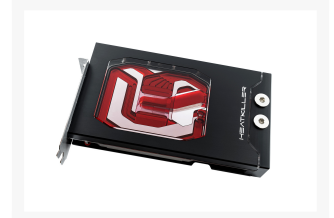


WATERCOOL

WATERCOOL HEATKILLER V FOR RTX 4080 FE - ACRYL NI-BL ARGB

\$256.49

Product Images





Short Description

Our HEATKILLER V series is the perfect choice for those who want to equip their graphics card with a powerful and stylish cooler.

Description

Our HEATKILLER V series is the perfect choice for those who want to equip their graphics card with a powerful and stylish cooler. This water cooler is designed especially for the NVIDIA GeForce RTX 4080 series and provides optimal cooling performance for the GPU, voltage converter and VRAM.

Features

Key features of the HK V Series:

- High Performance Bottom Plate
- Selected high performance thermal pads on GDDR6X RAM
- Dual layer inflow

- Symmetrical cooling Design
- Design-integrated connection threads in the terminal
- Screwless design
- Insulating spacers made of high performance plastic (Peek)
- Plug-in system for aRGB strips
- CNC cut thermal pads

High-performance cooling structure

In order to keep the temperatures in the area of the GPU core low, we have strongly optimized the cooling structure around the graphics chip. The 48 x 0.3mm fins used ensure high cooling performance with a consistently high flow rate. A flow-optimized acrylic jet plate ensures an ideal coolant distribution. The clearance to all heat-relevant components has been kept tight, which effectively dissipates the heat from thermal problem areas such as GDDR6X Ram and voltage converters.

The PEEK spacers made of the high-performance plastic ideally isolate the cooler from the PCB and facilitate the mounting. Thermal Grizzly's legendary Kryonaut thermal compound ensures the best possible heat Transfer.

Dual Layer Inflow and Symmetrical Cooling Design

The dual layer inflow, as well as the symmetrical cooling design, can also be found in the coolers for NVIDIA's RTX 4080 graphics cards. The increased inflow is especially important for the finely slotted cooling unit. The division of the water on two levels ensures a significantly better flow through the cooler. The wide and symmetrically designed channels increase the flow and thereby the general performance of the HEATKILLER V cooler.

Selected high performance thermal pads for GDDR6X.

Our development department has invested a lot of time into finding the ideal thermal pads for the hot GDDR6X RAM. Accordingly, special high-performance thermal pads are included in the scope of delivery.

Design-integrated connection terminal

The laterally mounted connection module has been completely integrated into the design of the cooling block. With the terminal, the connection threads also move to the side of the HEATKILLER. This compact design allows the cooler to be installed in almost any case. Like a tailor-made suit, the HEATKILLER thereby wraps around the whole graphics card. This way, the water-cooled RTX 4080 FE becomes a visual highlight in the computer.

Backplate and aRGB in one package

The new HEATKILLER® V integrates the backplate into the assembly concept. Not only does the backplate ensure a better distribution of forces around the cooling block, it also further enhances the unique design of the cooler. The pre-installed aRGB strips now use a modular plug-in system. The high compatibility ensures that the HEATKILLER V Pro can be integrated into almost all lighting concepts.

Made in Germany

The production takes place with the utmost care at our state-of-the-art CNC machine park in Waren an der Müritz. Many work steps are carried out by hand and each product is brought to perfection according to the

four-eyes principle. Made in Germany as you would expect it to be.

Specifications

Technical data:

Material base plate: electrolytic copper nickel-plated

Material cover: PLEXIGLAS® GS

Material cover: black anodized aluminum

Material connection terminal: Acetal

Dimensions: (LxWxH): 220 x 124 (incl. terminal) x 32.8mm (incl. backplate)

Connection: 4x G ¼ inch (DIN ISO 228-1)

Approved up to 1 bar

Compatibility:

NVIDIA RTX 4080 Founders Edition

Scope of delivery:

1 x HEATKILLER® V aRGB

1 x HEATKILLER® V backplate black

1 x Dual Slot Bracket

1 x mounting material

1 x Thermal Grizzly Kryonaut thermal paste

Chip Manufacturer:	NVIDIA
for GPU Chip Series:	GeForce® RTX 4080
Block Material:	nickel plated copper
Top Material:	ACRYL
Decorative Screen Material:	aluminum black
Lighting:	pre-assembled aRGB
Shipping weight:	1,77 Kg
Product weight:	1,77 Kg

Additional Information

Brand	Watercool
SKU	WC-15672
Weight	3.0000
Color	Black
Vga	Nvidia Founders Edition RTX 4080
Block GPU Type	Nvidia
Vendor SKU/EAN	4251312606220

