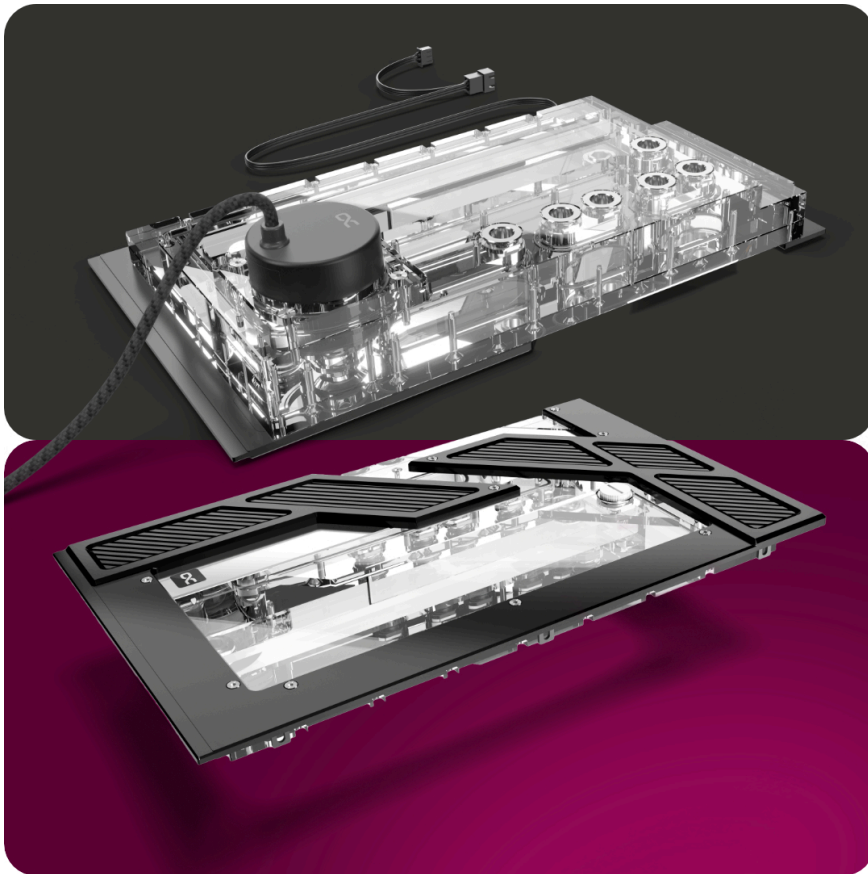








Alphacool Apex Distro Plate Y60 with D5 Apex pump

\$334.95

Product Images



-  Distro Plate for the HYTE Y60 case
-  Brilliant digital aRGB illumination
-  Chrome-plated brass connections
-  VPP Apex pump included





Short Description

The Alphacool Apex Distro Plate is the visual upgrade for the Y60. It was specially designed for this case and replaces the front glass panel. A must-have for every custom water cooling system.

Description

Product information

The Alphacool Apex Distro Plate is the visual upgrade for the Y60. It was specially designed for this case and replaces the front glass panel. A must-have for every custom water cooling system.

Features

Apex Design

The Apex product line from Alphacool represents the highest level of perfection. First-class materials and innovative technologies guarantee a unique premium product. A core element is the chrome-plated brass G1/4" connections. In this way, Alphacool avoids the problem of possible leaks due to cracking caused by screwing the connections directly into the acrylic. The connections are in two parts, fitted with an O-ring and counter each other when installed in the acrylic.

High-quality choice of materials & brilliant lighting

Alphacool's Apex Distro Plate is made from high-quality acrylic glass. This allows a clear view of the coolant

and enables brilliant illumination thanks to the built-in digitally addressable aRGB lighting. The lighting can be controlled via a digital aRGB header on the mainboard or optionally via Alphacool's Aurora Eiscontrol aRGB controller (article no.: 15360).

Easy installation

The Alphacool Apex Distro Plate Y60 replaces the front glass panel of the Y60 housing and is easy to install. It is mounted in place of the glass panel and securely fastened using the original screws. After installation, the distro plate is connected to the water cooling loop.

Note: The Apex Distro Plate Y60 is only compatible with the Y60 housing.

Compatibility:

- Y60 Case

Specifications

Technical data	
Dimensions (L x W x H)	344,50 x 213,50 x 87,30 mm
Material	acrylic
Volume	approx. 300ml
Pump compatibility	VPP/D5
Threads	6x G1/4" + 1x fill port and 1x drain port
Maximum working temperature	60 °C
Pressure tested	0,8 Bar
Quantity digital aRGB LEDs	11
Power digital aRGB LEDs	5V
Power connection digital aRGB LEDs	3-Pin JST + 3-Pin 5V
Weight	3000g
Color	transparent

Technical data pump	
Material pump	synthetic material

Material pump cover	aluminium
Material axle	ceramics
Connections	4-Pin PWM SATA
Rotational speed	2500 - 4500 RPM
Cable lengths	4-Pin PWM - 48cm SATA - 48cm
Operating voltage	8-13V DC / 14W IP32
Starting voltage	12V DC
Maximum pumping head	4,25m
Maximum flow rate	340L/h
Maximum working temperature	60°C
Color	black

Warranty: 3 years

Additional Information

Brand	Alphacool
SKU	AC-13848
Weight	2.0000
Color	Clear
Reservoir Type	Distribution plate
Pump Type	D5 Apex
Vendor SKU/EAN	4250197138482

