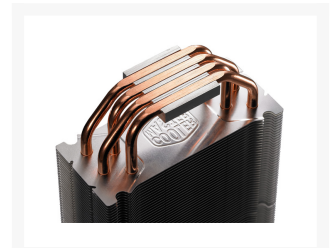




Cooler Master RR-CCH-LB12-GP Hyper 212 CPU Cooler for AMD AM2, K8 & Intel 775 - Sleeved

\$42.95

Product Images





Short Description

The Cooler Master Hyper 212 features two separate heatsinks to allow the most dramatic airflow possible. Also adding to the them of "two" Cooler Master includes an extra fan bracket so you can mount an additional 120mm fan (not included) for a dynamic push/pull airflow effect that will dramatically increase your airflow while reducing your overall system noise. Featuring a low noise blue LED sickle bladed fan, plus the addition of 4 large heatpipes and an all aluminum construction makes for the maximum performance to noise ratio. The universal mounting design allows you to mount the Hyper 212 on a wide variety of motherboards and CPU's.

Description

The Cooler Master Hyper 212 features two separate heatsinks to allow the most dramatic airflow possible. Also adding to the them of "two" Cooler Master includes an extra fan bracket so you can mount an additional 120mm fan (not included) for a dynamic push/pull airflow effect that will dramatically increase your airflow while reducing your overall system noise. Featuring a low noise blue LED sickle bladed fan, plus the addition of 4 large heatpipes and an all aluminum construction makes for the maximum performance to noise ratio. The universal mounting design allows you to mount the Hyper 212 on a wide variety of motherboards and CPU's.

Features

- Universal design to fit AMD AM2, K8 and Intel LGA775
- Sickle blade Blue LED low noise fan 19dBA
- Special fan bracket to mount another fan on the other side (2nd fan NOT included)
- 2 way air flow push/pull for dramatic cooling

- Copper base
- 4 heatpipes

Specifications

Brand	Cooler Master
Model	RR-CCH-LB12-GP Hyper 212
Compatibility	<div style="display: flex; flex-direction: column; gap: 10px;"> <div style="display: flex; align-items: center;"> ✘ AMD Athlon 64 (K8) Socket 754/939/940 </div> <div style="display: flex; align-items: center;"> ✘ AMD Athlon 64 (AM2) Socket 940 </div> <hr style="width: 50%; margin: 10px auto;"/> <div style="display: flex; align-items: center;"> ✘ Intel Core 2 Duo LGA775 Socket T </div> </div>
Overall Dimensions	122 L x 92 W x 160 H mm
Weight	710g
Material	Copper base with 4 heatpipes and aluminum fins
Fan Speed	2000 RPM
Air Flow	69CFM
Noise Level	19dBA
Power Connector	3-Pin
Package Contents	CPU Cooler, all mounting hardware, instructions, thermal paste

Additional Information

Brand	Cooler Master
SKU	RR-CCH-LB12-GP
Weight	2.0000
Material	Copper/Aluminum
Fan Dimensions	92mm
Fan Connection	3-Pin

