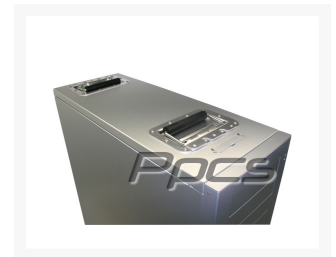




# Industrial Recessed Case Handle Install (Pair) - Silver Aluminum

\$49.00

## Product Images



## Short Description

Use this service to install the Black Industrial Recessed Case handles on any case that you have added to your cart. Includes (2) case handles, stainless steel hardware and full professional installation!

## Description

Use this service to install the Black Industrial Recessed Case handles on any case that you have added to your cart. Includes (2) case handles, stainless steel hardware and full professional installation!

Strong and cost effective handle solution for our larger computer chassis. This handle has a industrial grunge look to it and looks trick on full tower and server cases. Spring-loaded handle with comfortable 5/8" diameter rubber grip. Heavy aluminum construction with protective coat finish. Dimensions: 6-1/16" W x 4" H x 1/2" D. Cutout dimensions: 5" W x 3" H. This professional cabinet and case hardware is designed and produced to get the job done, night after night, gig after gig. Each product is built to last from the highest quality materials, and is engineered for reliability and performance. Choose the same products that professionals around the world already use...superb performance at a great price!

## Specifications

---

- 6.25"W x 4.25"H x .30"D
- 10 Mounting Holes
- 20" Diameter
- 0.08" Aluminum
- Burnished Finish
- Spring Loaded Handle
- 0.75" Diameter Rubber Grip

## Additional Information

---

SKU	SERVICE-RH-SL
Weight	1.0000
Color	Silver

