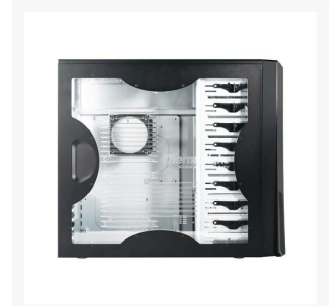
 **Thermaltake M9
VI1000BWS Chassis w/
Window - Black**

Special Price
\$59.95 was
\$79.95

Product Images





Short Description

Great new midtower case from Thermaltake is the slick looking M9! Metal grill front bezel for maximum air intake. High efficiency ventilation includes a 120mm fan in front and rear. Tool-free installation for 5.25" drive bays and add-on cards.

Description

Great new midtower case from Thermaltake is the slick looking M9! Metal grill front bezel for maximum air intake. High efficiency ventilation includes a 120mm fan in front and rear. Tool-free installation for 5.25" drive bays and add-on cards.

AIR FLOW

APPEARANCE



Metal grilled front bezel for maximum air intake Fine black mesh



Angle view



Angle view



Angle view

VENTILATION



120mm blue LED front fan to cool hard drives



Back 120mm fan for exhausting hot air



CPU & VGA card venting hole



Side panel with air duct for maximum CPU cooling



Free-flowing design

INTERNAL STRUCTURE



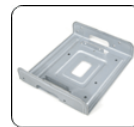
Tool-free installation for 5.25" drives



Tool-free PCI slots



Front removable HDD cage for up to 3 hard disk drives



FDD & HDD rack for 5.25" drive installation

EXTERNAL STRUCTURE



USB x 2, HD Audio









Easy access Power & Reset



EMI clips

Features

-  Glossy finish
-  9 Drive Bays - 9 5.25" drive bay, swappable to 3.5" drive bay using HDD cage
-  High efficiency ventilation: 120mm silent fan in front and rear
-  Metal grilled front bezel for maximum air intake
-  Air guide and openings on side panel enhance CPU & VGA heat dissipation
-  Tool-free installation for 5.25" drive bays and add-on cards

Specifications

Case Type	Mid Tower
Material	SECC
Front Bezel Material	
Color	Black
Side Panel	Solid
Motherboard Support	Micro ATX, Standard ATX
Motherboard Tray	
5.25" Drive Bay	9 or 6
Ext. 3.5" Drive Bay	1 (convertible from 5.25")
Int. 3.5" Drive Bay	3
Expansion Slots	7
Front I/O Ports	USB x 2, HD Audio

Cooling System	- Front (intake) : 120 x 120 x 25 mm blue LED fan, 1300 rpm, 17 dBA - Rear (exhaust) : 120 x 120 x 25 mm, 1300 rpm, 17 dBA
Liquid Cooling Capable	No
Liquid Cooling Embedded	No
Power Supply Supported	Standard ATX PSII
Power Supply Included	No
Dimension (H*W*D)	17.3 x 7.9 x 19.5 in 440 x 200 x 495 mm
Net Weight	14.6 lbs 6.6 kg
Security Lock	
Application	
Warranty	3 Years

Additional Information

Brand	Thermaltake
SKU	VI1000BWS-D
Weight	30.0000
Color	Black
Chassis Form Factor	Mid-Tower
Side Panel	Window
Material	Steel
PSU Wattage	No PSU
Special Price	\$59.95

