



GELID Solutions Wing 9 - 92mm UV Green Gamer Fan w/ Nanoflux Bearings - Sleeved

\$16.99

Product Images



Short Description

WING 9
92mm Gamer Fan

The WING case fans are premium quality, UV reactive, ultra-quiet, dust and water proof cooling fans for gaming enthusiasts. This series features an unique bearing with patented design, winglet fans blades and low starting voltage. Only the highest quality materials have been used to manufacture this state-of-the-art cooling fan. Control the fan RPM speed according to your desire using the supplied voltage regulator. To add to the silence fan mounts replace traditional screws and are made of high quality, ultra-soft silicone which stop vibrations from the fan motor from traveling into your PC case.

Description

WING 9
92mm Gamer Fan

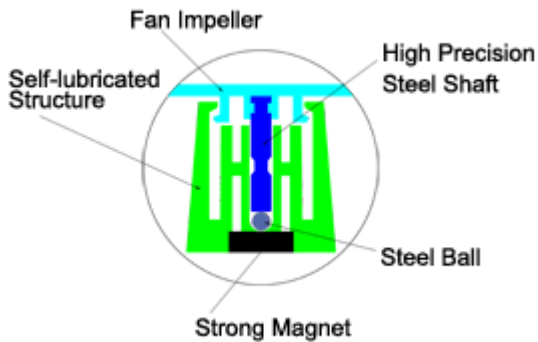
The WING case fans are premium quality, UV reactive, ultra-quiet, dust and water proof cooling fans for gaming enthusiasts. This series features an unique bearing with patented design, winglet fans blades and low starting voltage. Only the highest quality materials have been used to manufacture this state-of-the-art cooling fan. Control the fan RPM speed according to your desire using the supplied voltage regulator. To add to the silence fan mounts replace traditional screws and are made of high quality, ultra-soft silicone which stop vibrations from the fan motor from traveling into your PC case.

Nanoflux Bearing (NFB)

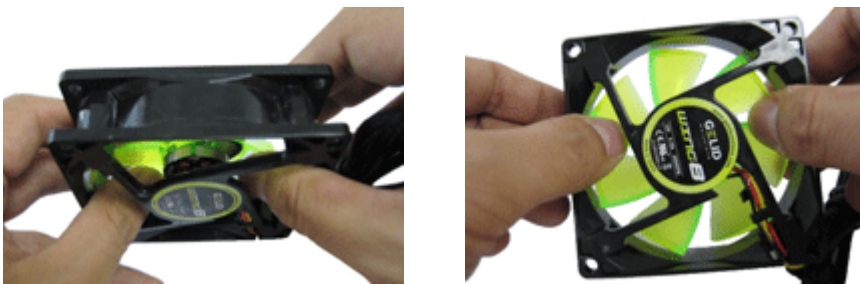
Patented Nanoflux bearing incorporates a clever magnetic design, very high precision manufacturing and runs friction-free and operates noiseless. Electromagnetic fields are exploited to keep solid parts from touching. The load is carried by a magnetic field.

a) Key Features of Nanoflux Bearing (NFB)

The Nano-technology composite ensures lowest abrasion and extreme durability (MTTF 100' 000 hours). Compared to other Magnetic bearings this technology allows the impeller to be detached and thus the fan blades can be cleaned easily.



Caption: The material of the Nanoflux bearing is self lubricating and even waterproof.



Caption: The fan impeller can be removed from the black fan case by applying gentle pressure.

b) Nanoflux Bearing (NFB) compared to sleeve and ball bearings

Even though conventional sleeve and ball bearings currently dominate the fan market however both have their disadvantages. While sleeve bearings have very low noise emissions and are very cost effective, they tend to leak oil; once the oil has dissipated the fan can no longer operate. Ball bearings, on the other hand, while providing longer operating life are costlier, noisier and are prone to damage.

GELID' s Nanoflux bearing uses magnetic flux to limit contact and friction between the bearing and the shaft. High precision self-lubricated material eliminates oil leakage. The result is a ultra quiet long life bearing.

Fan Speed Control

The RPM speed of any fan can be controlled from full speed to low speed manually according to desire using this voltage regulator. This product is suitable for all high RPM fans and regulates between 5 and 12V.

Rubber Fan Mounts

Vibration from fan motors can travel into a PC case and become amplified when a fan is fitted tightly. This 'vibrational' noise is annoying if you wish to build a very quiet or virtually silent PC.

These rubber mounts have been designed specifically to deal with fan-induced vibrations and are an ideal alternative to standard fan screws, leaving vibrations 100% decoupled from your PC case.

Fan cable is fully covered in nylon Techflex sleeving and Premium Heatshrink, colors of your choice.

Features

Mount Features:

- High quality materials insures long life even at high temperature
- Ultra-soft silicone polymer will not break or tear during installation
- Universal-Design fits most open chassis fan sizes (80mm,92mm,120mm) and PC cases
- Quick & Easy Tool Less Installation

Features:

- Nanoflux Bearing (NFB)
- Optimized Winglet Fan Blades
- Waterproof & Dustproof
- Long Lifetime (100'000 h MTTF at 40°C)
- Silicone Fan Mounts
- Fan Speed Control

Specifications

*INCLUDED:	4 Fan Mounts, Fan Speed Control
Air Flow (CFM):	39.8
Bearing:	Nanoflux Bearing (NFB)
Cable Length (mm):	500
Connector:	3 Pin Molex
Current (A):	0.14
Dimensions (mm):	92 x 92 x 25
Fan Speed (RPM):	2000
Noise Level (dBA):	22.5
Safety Approvals:	UL, CUL, CE, RoHS Compliant
Static Pressure (mmAq):	2.15
Voltage (V):	12
Warranty (years):	5
Weight (g):	75

Additional Information

Brand	Gelid Solutions
SKU	20925-7
Weight	0.6000
Color	Black
Fan Dimensions	92mm
Fan Width	25mm
Fan Connection	3-Pin
Fan Voltage	12 VDC
Fan RPM	2000
Fan CFM	40
Fan Noise (dB)	23

