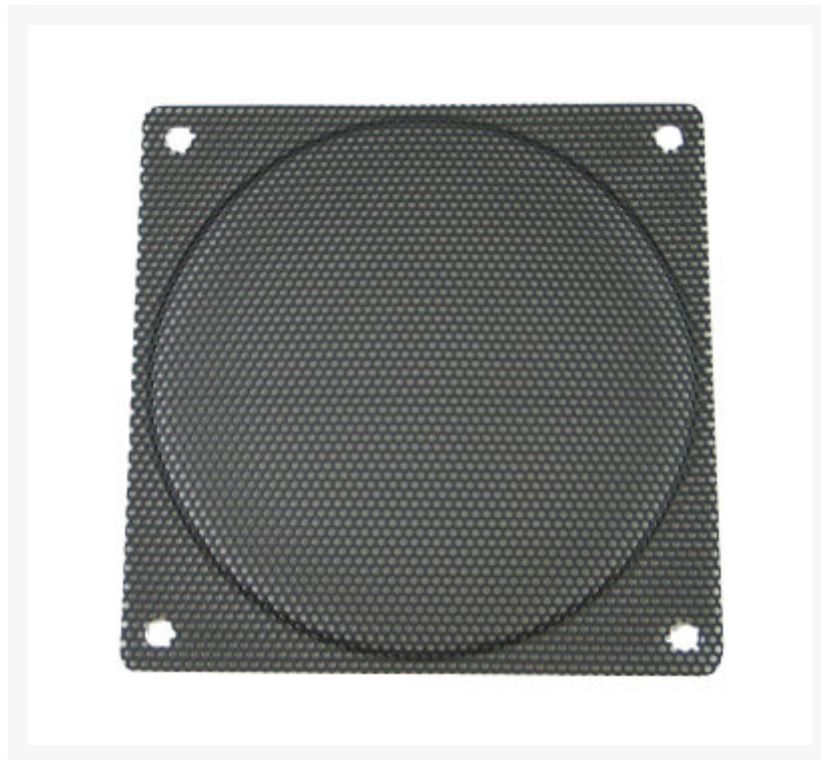




Steel Mesh 120 mm Fan Filter (Small Size Hole) - Black

\$3.99

Product Images



Short Description

This very special product. First, it is a thin fan grill with a domed shape. It allows you to mount it between a case fan and the case. As a result its surface is on the same level as the surrounding area. Coupled with its color, the grill is kind of "hidden." It has the look of the mesh grills often seen on car and house speakers. The uniform mesh with high hole surface area allows maximum airflow with minimum noise increase. This fan grill looks more "stuffed" than a traditional fan grill, but the hole to surface ratio is very high.

Description

This very special product. First, it is a thin fan grill with a domed shape. It allows you to mount it between a case fan and the case. As a result its surface is on the same level as the surrounding area. Coupled with its color, the grill is kind of "hidden." It has the look of the mesh grills often seen on car and house speakers.

The uniform mesh with high hole surface area allows maximum airflow with minimum noise increase. This fan grill looks more "stuffed" than a traditional fan grill, but the hole to surface ratio is very high.

Second, these screens provide acceptable filtering, especially large particles and dusts often found in households and offices. The steel structure makes it very easy to clean and remove dusts off the filter.

Third, the small holes on the screen makes it a perfect design for blowholes on the top of a case. It does not allow most small, falling items such as screws to pass through by accident. It may even hold some drops of water by the surface tension. In comparison, traditional fan grills have this problem with their much larger gaps between grills.

Now available for 12 cm case-fan mounts. It should fit almost all cases and 12 cm case fans. The spacing on the holes is the same as that on a 120mm case fan. The dome thickness is 1/8 inch or about 3mm. The diameter is slightly smaller than most blowholes designed for 12 cm case fans. Hard steel material with a domed surface. It's very hard to bend the surface and is very light weight.

Installation: For case fans, it should be mounted between the fan and the case. You have to disassemble the case fan if the fan is already mounted on your case.

Features

- Blocks dust from entering your computer case
- Acts as a finger guard and dust filter
- 1-piece design
- 120mm Steel Mesh Fan Filter, Black Color, Small Hole (hole diameter 1.5mm)

Additional Information

SKU	12MGAK-N
Weight	0.2000
Color	Black
Fan Accessory Type	Filter
Fan Dimensions	120mm
Material	Steel
Shape	Square
Mesh Type	Steel Mesh

