

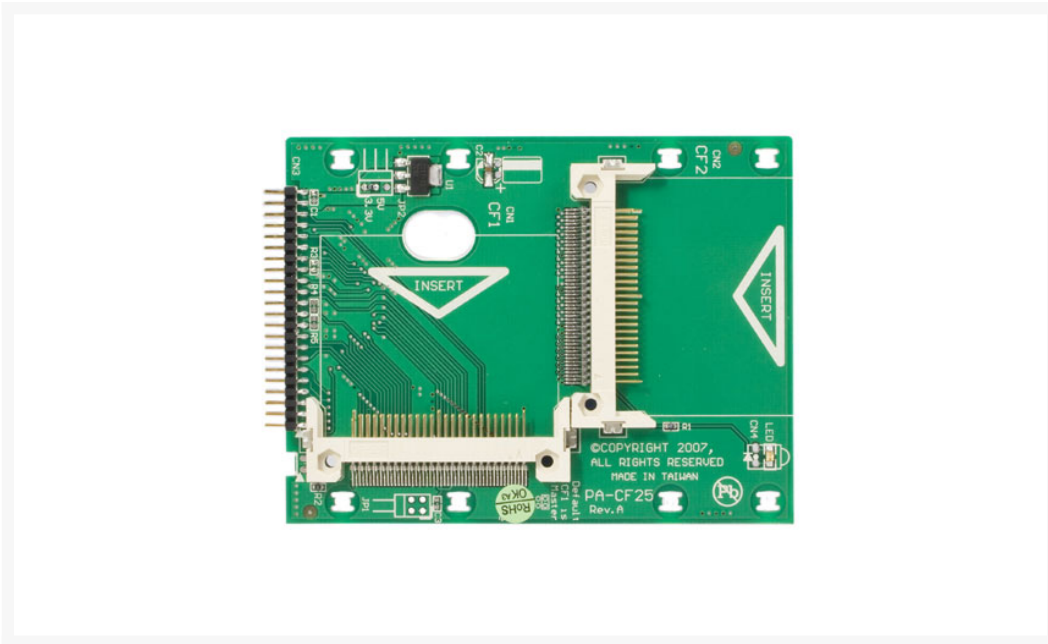


StarTech.com
Hard to find made easy

StarTech 2.5in IDE to Dual Compact Flash SSD Adapter Card

\$20.99

Product Images



Short Description

Product Details:

This 2.5in IDE to Dual Compact Flash SSD Adapter Card allows you to convert one or two Compact Flash (CF type I/II) cards or MicroDrives into a bootable IDE Solid State Drive - a simple and convenient way to replace a 2.5in IDE hard disk drive.

The IDE to Dual CF adapter card makes it easy to build your own do-it-yourself SSD (requires CF card or Micro Drive), allowing you to take advantage of the benefits that Solid State storage has to offer. With no moving parts, a SSD is the ideal addition to virtually any working environment, because it provides cooler and quieter storage than a conventional hard disk drive. Plus, Solid State drives are less susceptible to atmospheric hazards (e.g. dust particles, atmospheric changes etc.), ensuring seamless performance regardless of environmental factors.

A highly reliable storage solution, the IDE to Compact Flash SSD Adapter Card is backed by a Lifetime Warranty and free, lifetime technical support.

Features:

- Connects directly into your 2.5" IDE port
- Convert your CF for use as a SSD (solid state drive)
- Memory card installed can boot like IDE hard drive without any device drivers
- One master and one slave slot
- Reading-performance, anti-shock ability and tolerance of the the temperature difference are better than traditional hard drives
- With no moving parts, provides a silent operation that is resilient to environmental factors while reducing overall power consumption
- Supports CF type I/II or Micro Drives
- A true IDE 2.5" interface - Fully compatible with IDE specs
- LED's to indicate activity
- No drivers required
- Easy to use and install

Applications:

- A suitable replacement for a 2.5" IDE hard drive.
- Desktops
- Notebooks

Specifications:

Warranty	Lifetime warranty
----------	-------------------

Product Height	0.28 in [7 mm]
LED Indicators	1 - Activity
Product Length	3.78 in [96 mm]
Operating Temperature	0 - 60
Carton Quantity	40
Shipping (Package) Weight	0.33 lb [0.15 kg]
Product Weight	0.92 oz [26 g]
Product Width	2.76 in [70 mm]
Number of CF slots	single or dual slot
Connectors	
CF Connector	50 pin Type I or II
IDE Connector	44 pin male header
Note	Please note that this card doesn't support hot swapping

Description

Product Details:

This 2.5in IDE to Dual Compact Flash SSD Adapter Card allows you to convert one or two Compact Flash (CF type I/II) cards or MicroDrives into a bootable IDE Solid State Drive - a simple and convenient way to replace a 2.5in IDE hard disk drive.

The IDE to Dual CF adapter card makes it easy to build your own do-it-yourself SSD (requires CF card or Micro Drive), allowing you to take advantage of the benefits that Solid State storage has to offer. With no moving parts, a SSD is the ideal addition to virtually any working environment, because it provides cooler and quieter storage than a conventional hard disk drive. Plus, Solid State drives are less susceptible to atmospheric hazards (e.g. dust particles, atmospheric changes etc.), ensuring seamless performance regardless of environmental factors.

A highly reliable storage solution, the IDE to Compact Flash SSD Adapter Card is backed by a Lifetime Warranty and free, lifetime technical support.

Features:

- Connects directly into your 2.5" IDE port
- Convert your CF for use as a SSD (solid state drive)
- Memory card installed can boot like IDE hard drive without any device drivers
- One master and one slave slot
- Reading-performance, anti-shock ability and tolerance of the the temperature difference are better than traditional hard drives
- With no moving parts, provides a silent operation that is resilient to environmental factors while reducing overall power consumption
- Supports CF type I/II or Micro Drives
- A true IDE 2.5" interface - Fully compatible with IDE specs

- LED's to indicate activity
- No drivers required
- Easy to use and install

Applications:

- A suitable replacement for a 2.5" IDE hard drive.
- Desktops
- Notebooks

Specifications:

Warranty	Lifetime warranty
----------	-------------------

Product Height	0.28 in [7 mm]
LED Indicators	1 - Activity
Product Length	3.78 in [96 mm]
Operating Temperature	0 - 60
Carton Quantity	40
Shipping (Package) Weight	0.33 lb [0.15 kg]
Product Weight	0.92 oz [26 g]
Product Width	2.76 in [70 mm]
Number of CF slots	single or dual slot
Connectors	
CF Connector	50 pin Type I or II
IDE Connector	44 pin male header
Note	Please note that this card doesn't support hot swapping

Additional Information

Brand	Startech
SKU	CF2X2IDE25
Weight	1.0000
Color	Green
Card Function	SSD Adapter Card
Special Price	\$20.99

