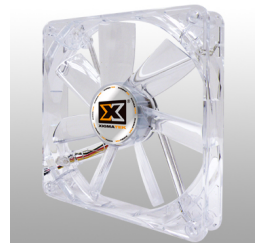
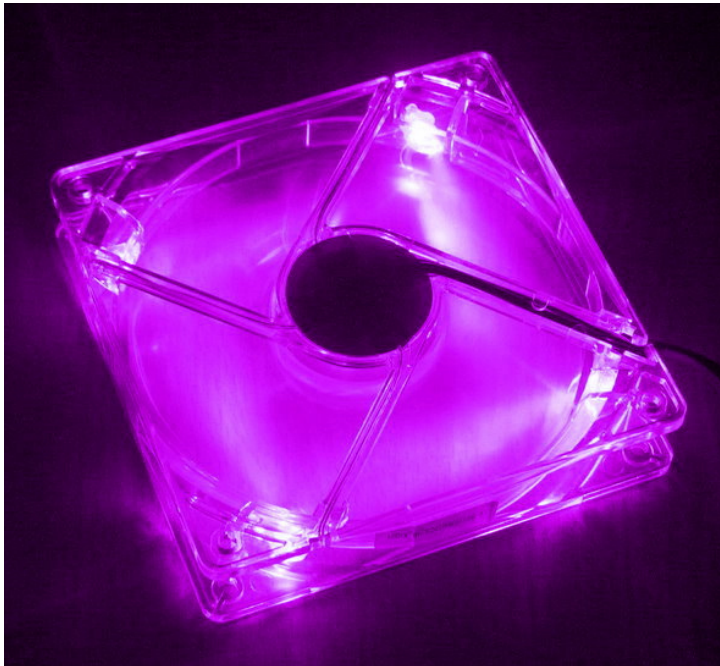




Xigmatek "Crystal Series" 140x25mm LED Fan - Retail - Purple

Special Price
\$7.99 was
\$14.99

Product Images



Short Description

LED Fan Crystal series, multiple LED color options Blue/Green/Red/White/Purple, come with Quad LEDs and transparent frame a/ blades. Combination design of special & large fan blade and efficient frame, Crystal series performs pushing max.

Description

LED Fan Crystal series, multiple LED color options Blue/Green/Red/White/Purple, come with Quad LEDs and transparent frame a/ blades. Combination design of special & large fan blade and efficient frame, Crystal series performs pushing max. airflow and min. amount of noise. To choose a Quiet, reliable, skinny and outstanding case fan, LED fan Crystal series is your best choice.

- Crystal series come with multiple LED color options (Blue/Green/Red/White/Purple) / with Quad LEDs and transparent frame/blades.
- Specific bearing design (Rifle bearing) provides long MTBF and outstanding performance.
- Optimal blade design provides the reduction of noise and power consumption.

Fan cable is fully covered in nylon Techflex sleeving and Premium Heatshrink, colors of your choice.

Features

0

Specifications

Product Name	CLF-F1455	
Product Number	CFS-SYGJS-PU1	
Fan	Dimension	140(W) x 140(H) x 25(D) mm
	Voltage Rating	12 V
	Starting Voltage	7V
	Speed	1000 R.P.M 00 R.P.M.
	Bearing Type	Long-life bearing
	Air Flow	60.46 CFM
	Life Expectancy	50,000 hrs
	Noise Level	<16 dba="" font="">

Available color	Quad LED:Blue / Green / Red / White / Purple Options
Connector	3 Pin
Accessory	4 pin adapter Screws*4

Additional Information

Brand	Xigmatek
SKU	CLF-F1455-D
Weight	0.8000
Color	Clear
Fan Dimensions	140mm
Fan Width	25mm
Fan Connection	3-Pin
Fan Voltage	12 VDC
Fan RPM	1000
Fan CFM	60
Fan Noise (dB)	16
LED Color	UV (Purple)
Special Price	\$7.99

