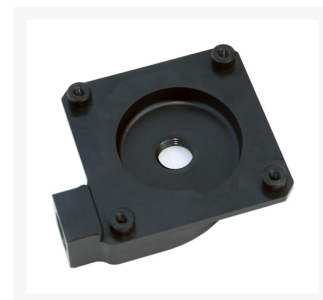




Swiftech MCP35X Pump Housing G1/4 x 1/2" Barb Fittings

\$24.95

Product Images



Short Description

Swiftech MCP35X Pump Housing G1/4 x 1/2" Barb Fittings. The new housing is precision machined from black POM, and is also available separately. It is compatible with all previous MPC3XX class pumps.

Description

Swiftech MCP35X Pump Housing G1/4 x 1/2" Barb Fittings

The new housing is precision machined from black POM, and is also available separately. It is compatible with all previous MPC3XX class pumps.

Pump housing, including installation screws, (2) G1/4 x 1/2" barb fittings

Additional Information

Brand	Swiftech
SKU	MCP35X-H
Weight	2.0000
Color	Black
Pump Type	DDC

