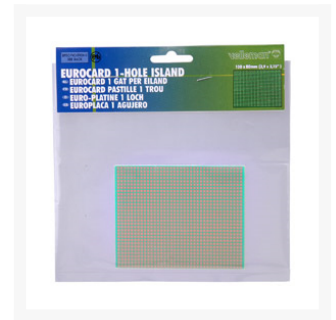
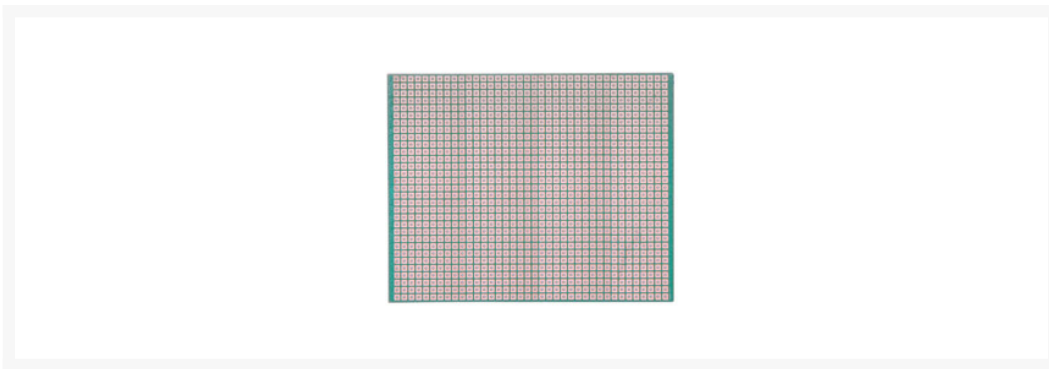




Velleman ECS1/2 Hole Island Euro Card 3.9" x 3.1"

Special Price
~~\$6.99~~ was
\$8.99

Product Images



Short Description

Velleman euro cards feature a standard European format for printed circuit boards which may be plugged together into a standardized eurodin connector for fast circuit prototyping across multiple boards. Each epoxy PCB is pre-cleaned, fluxed, hot air leveled, and a post-cleaned (HASL) for maximum oxidation resistance. Copper-tinned 0.041" (1 mm) diameter holes allow for quick component placement and sure solder joints.

Description

Velleman euro cards feature a standard European format for printed circuit boards which may be plugged together into a standardized eurodin connector for fast circuit prototyping across multiple boards. Each epoxy PCB is pre-cleaned, fluxed, hot air leveled, and a post-cleaned (HASL) for maximum oxidation resistance. Copper-tinned 0.041" (1 mm) diameter holes allow for quick component placement and sure solder joints.

Features

0

Additional Information

SKU	320-226
Weight	0.5000
Special Price	\$6.99

