

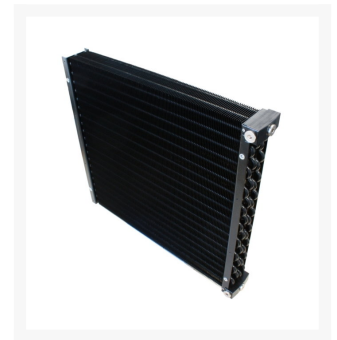


WATERCOOL

Watercool MO-RA3 360 Core LC

\$129.95

Product Images



Short Description

The MO-RA3 is the uncompromising development of the successful MO-RA2 series. The cooling capacity was further increased compared with the very powerful predecessor. The data speak for themselves, with 28 m copper tube and 2.5 square plates were used per MO-RA3.

Description

The MO-RA3 is the uncompromising development of the successful MO-RA2 series. The cooling capacity was further increased compared with the very powerful predecessor. The data speak for themselves, with 28 m

copper tube and 2.5 square plates were used per MO-RA3. The coolant then flows connected four times in parallel, through 72 rows of tubes. The fins of the MO-RAs are specially designed for use with low speed fans optimized. Due to the huge surface of the radiator and the effective geometry extremely good cooling performance are guaranteed.

The four-parallel connection of pipe lines, provides in spite of very high surface area for a low flow resistance. Extremely versatile, the new, aerodynamically optimized terminal block with three G1 / 4 "connecting thread.

The MO-RA Core LC is supplied without a housing, this radiator is ideal for self builders and can both actively and passively operated. For attachment to the housing or home-made fan aperture of the MO RA3 Core has on each side 4x M4 thread.

The MO RA3 fan aperture can not attach to this heat exchanger.

The MO-RA3 is produced in Europe. Most of the parts are manufactured in Germany, the development and installation will also be in Germany.

Specifications

Technical data:

- Material Internal: copper tubes, aluminum fins
- External dimensions (L x W x H): 405 x 378 x 63mm
- Weight: 5000g
- Tested pressure: 5 bar
- Surface: powder-coated black
- Connector: 6x G 1 / 4 inch

Delivery:

- 1x MO-RA3 360 Core LC
- 4x plug G1 / 4 "
- 4x M4x20mm spacer
- 1 installation manual

Additional Information

Brand	Watercool
SKU	WC-22015
Weight	12.0000
Color	Black
Radiator Size	Core (No Fan Mount)
Radiator Thickness	63mm

