

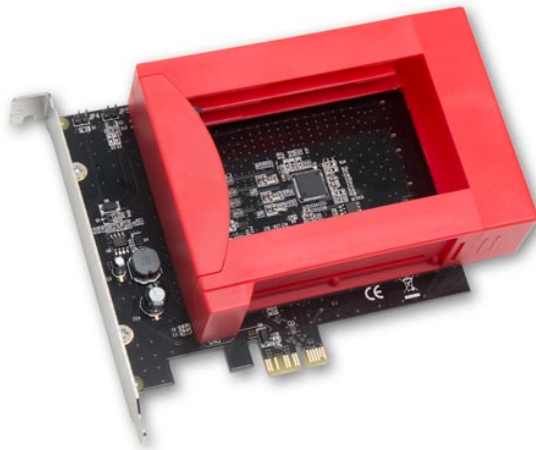


# SYBA RAID Caddy for Two 2.5" SATA 6Gbps Hard Disk Drives, PCI-Express Card, Marvell 88SE9128 Chipset

Special Price

**\$24.49** was  
**\$34.99**

## Product Images





## Short Description

---

### Product Details:

Low cost, high performance Raid Caddy gives user the flexibility to have two extra 2.5" HDD/SSD SATA storage at SATA III speed

#### Features:

- Cost Effective:
  - No Heavy Metal Housing
  - No Built-in Power Supply
  - Takes Less Space
- Maximum Performance:
  - Integrated the Latest 6G (SATA III) Hard Disk Technology Interface
- Minimum Wiring:
  - No Power Cable Needed
  - No Data Cable Needed
- Compliant with Serial ATA AHCI (Advanced Host Controller Interface) Specification Rev 1.0
- Compliant with PCI Express Base Spec. Revision 2.0 Backward Compatible to Revision 1.0a
- Compliant with Serial ATA High Speed Serialized AT Attachment Spec. Revision 1.0a
- Compliant with Serial ATA II Spec.
- 1-Lane 5.0 / 2.5Gbps PCI Express Bus
- Serial ATA (SATA) Interface:
  - Supports SATA 3.0 (Up to 6Gbps)
  - Backward Compatible to SATA-II (3Gbps) and SATA-I (1.5Gbps) Specification
  - Supports Native Command Queue (NCQ) and Port Multiplier
  - Supports Hot Plugging on SATA Port
  - Supports RAID 0, 1

#### Package Specifications:

- Dimension: L 6.5 x W 5.5 x H 1.5 inch
- Weight: 0.5 lb
- UPC: 810154017843

#### Package Includes:

- PCI-Express SATA 6G Raid Caddy
- Screws
- LED Cable
- Driver CD
- User Manual

#### Software Requirement:

- Windows 7
- Vista 32/64-bit
- Windows XP 32/64-bit
- Windows 2008 32/64-bit
- Windows 2003 32/64-bit
- Linux

## Description

---

#### Product Details:

Low cost, high performance Raid Caddy gives user the flexibility to have two extra 2.5" HDD/SSD SATA storage at SATA III speed

#### Features:

- Cost Effective:
  - No Heavy Metal Housing
  - No Built-in Power Supply
  - Takes Less Space
- Maximum Performance:
  - Integrated the Latest 6G (SATA III) Hard Disk Technology Interface
- Minimum Wiring:
  - No Power Cable Needed
  - No Data Cable Needed
- Compliant with Serial ATA AHCI (Advanced Host Controller Interface) Specification Rev 1.0
- Compliant with PCI Express Base Spec. Revision 2.0 Backward Compatible to Revision 1.0a
- Compliant with Serial ATA High Speed Serialized AT Attachment Spec. Revision 1.0a
- Compliant with Serial ATA II Spec.
- 1-Lane 5.0 / 2.5Gbps PCI Express Bus
- Serial ATA (SATA) Interface:
  - Supports SATA 3.0 (Up to 6Gbps)
  - Backward Compatible to SATA-II (3Gbps) and SATA-I (1.5Gbps) Specification
  - Supports Native Command Queue (NCQ) and Port Multiplier
  - Supports Hot Plugging on SATA Port
  - Supports RAID 0, 1

#### Package Specifications:

- Dimension: L 6.5 x W 5.5 x H 1.5 inch
- Weight: 0.5 lb
- UPC: 810154017843

Package Includes:

- PCI-Express SATA 6G Raid Caddy
- Screws
- LED Cable
- Driver CD
- User Manual

Software Requirement:

- Windows 7
- Vista 32/64-bit
- Windows XP 32/64-bit
- Windowns 2008 32/64-bit
- Windows 2003 32/64-bit
- Linux

Additional Information

Brand	SYBA
SKU	SD-PEX40044-D
Weight	1.0000
Color	Red
Card Form Factor	PCI EXPRESS
Driver Support/OS Compatibility	Windows XP, Vista, 7(32bit/64bit)
Special Price	\$24.49

